



# For Sale

**±32,000 s.f. Retail/Showroom/Warehouse**  
**Up to ±2.4 acres for Redevelopment Opportunity**  
**with Access from 3 Streets**

## Site features:

- Total size: ±32,000 s.f.
- First floor: ±16,000 s.f.
- Second floor: ±16,000 s.f.
- Ceiling height: Varies
- Loading: Grade level
- Doors: (2) 10' x 12'
- Heavy power: 1,000 amps / 240v / 3 phase
- Sale Price: \$1,750,000
- Conveyor belt system to access on 2nd floor
- Corner site
- Multiple access points and gates for truck traffic
- Signage visible on North Freeway
- Additional ±0.85 acres also available to provide access from 3 streets

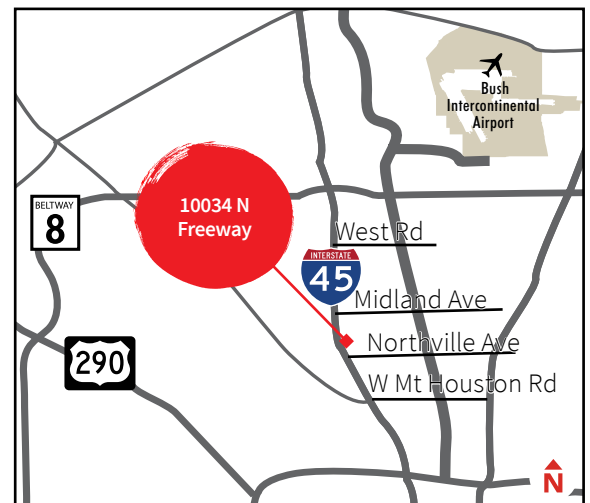
## Location:

Centrally located with direct access on Interstate 45 and close proximity to Beltway 8. Excellent visibility on Interstate 45 North.

**10034 N Freeway @ Midland Ave**  
**Houston, TX 77037**

**Mark Nicholas, SIOR**  
 +1 713 888 4024  
[mark.nicholas@am.jll.com](mailto:mark.nicholas@am.jll.com)

**Joe Berwick**  
 +1 713 425 5842  
[joseph.berwick@am.jll.com](mailto:joseph.berwick@am.jll.com)



# For Sale

**±32,000 s.f. Retail/Showroom/Warehouse on ±1.5904 acres**

10034 N Freeway @ Midland Ave | Houston, TX 77037

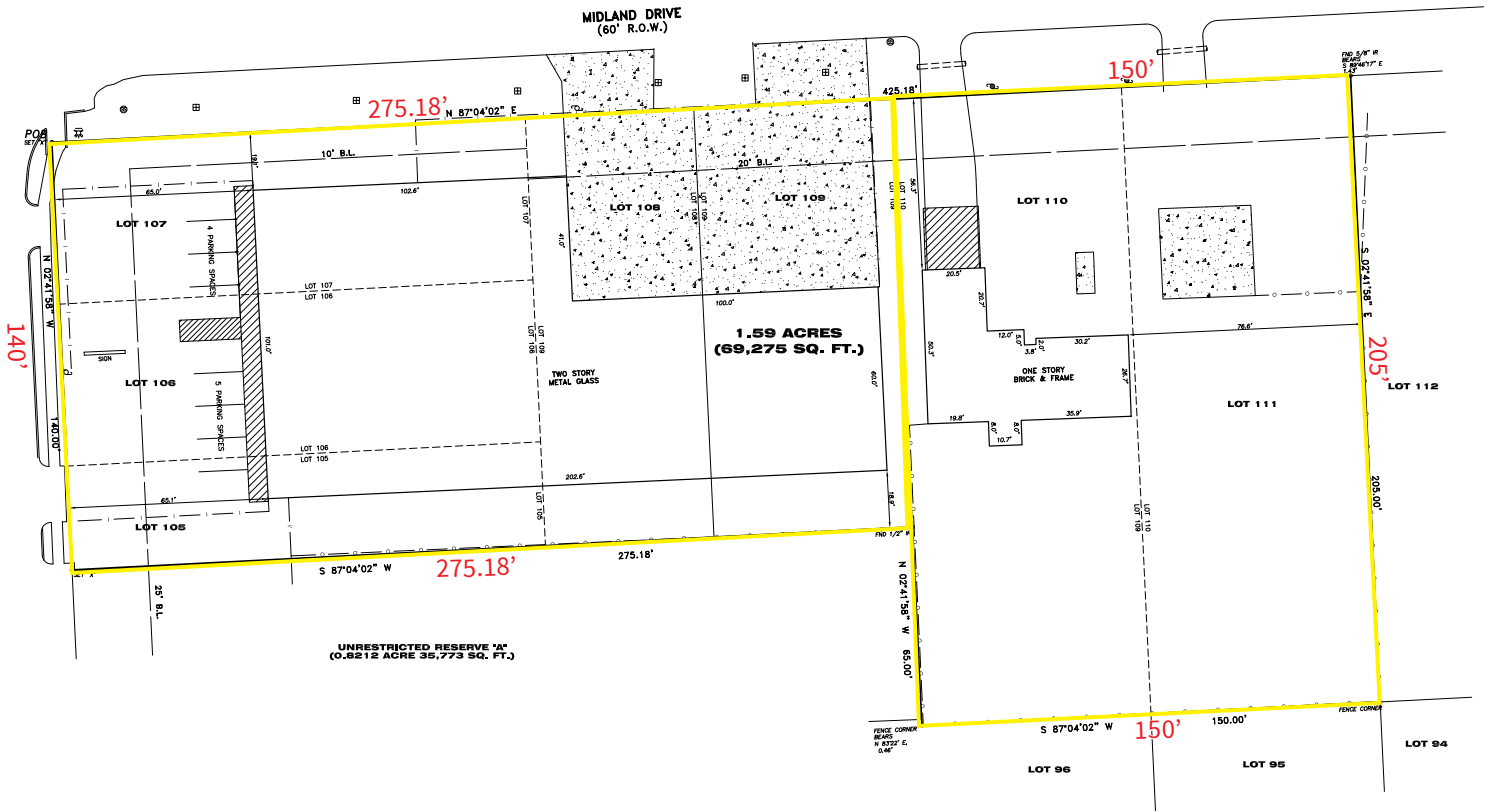


# For Sale

**±32,000 s.f. Retail/Showroom/Warehouse on ±1.5904 acres**

10034 N Freeway @ Midland Ave | Houston, TX 77037

**Survey:**



The information contained herein is obtained from sources believed to be reliable; however, JLL makes no guarantees, warranties or representations as to the completeness or accuracy thereof. The presentation of this property is submitted subject to errors, omissions, change of price or conditions, and is subject to prior sale, lease or withdrawal without notice.

