



FOR LEASE - BEVERLY HILLS MEDICAL BUILDING

9012-9016 WEST OLYMPIC BOULEVARD, BEVERLY HILLS, CA 90211

Jason Cole
Managing Director
Phone 818.304.8385
email jasonc@cag-re.com
Lic. 01727670

Commercial Asset Group
1801 Century Park East, Suite 1550
Los Angeles, CA 90067
Phone 310.275.8222

cag | COMMERCIAL
ASSET GROUP

BOUTIQUE BEVERLY HILLS MEDICAL BUILDING

9012-9016 WEST OLYMPIC BOULEVARD, BEVERLY HILLS, CA 90211

Property Highlights

- Prime Beverly Hills location
- Great stretch of Olympic (between Robertson & Doheny)
- Flexible space can be used for any medical use
- Private balcony in serene garden setting
- 4 Private offices and exam rooms
- Incredible natural lighting and hardwood floors
- Walking distance to great shops and restaurants

Property Information

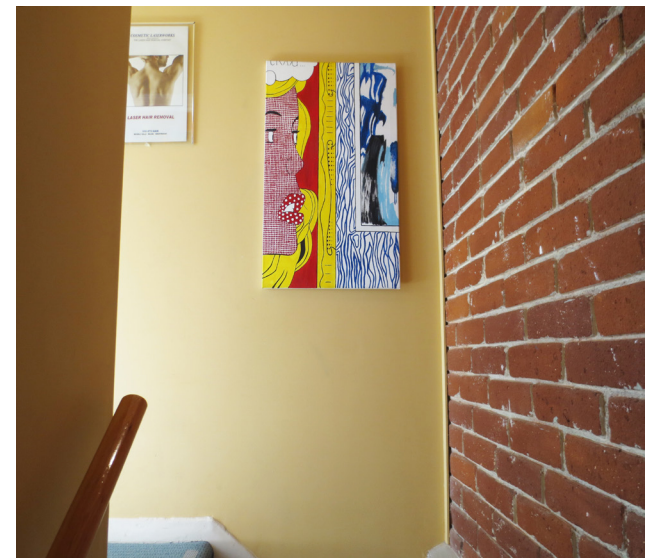
Building SF: +/- 1,000 SF

Rental Rate: \$4.00/SF + NNN charges
(NNN ~ \$0.40/SF)

These materials are based on information and content provided by others, which we believe are accurate. No guarantee, warranty or representation is made by Commercial Asset Group, Inc. or its personnel. All interested parties must independently verify accuracy and completeness. As well, any projections, assumptions, opinion, or estimates are used for example only and do not represent the current or future performance of the identified property. Your tax, financial, legal and toxic substance advisors should conduct a careful investigation of the property and its suitability for your needs, including land use limitations. The property is subject to prior lease, sale, change in price, or withdrawal from the market without notice.

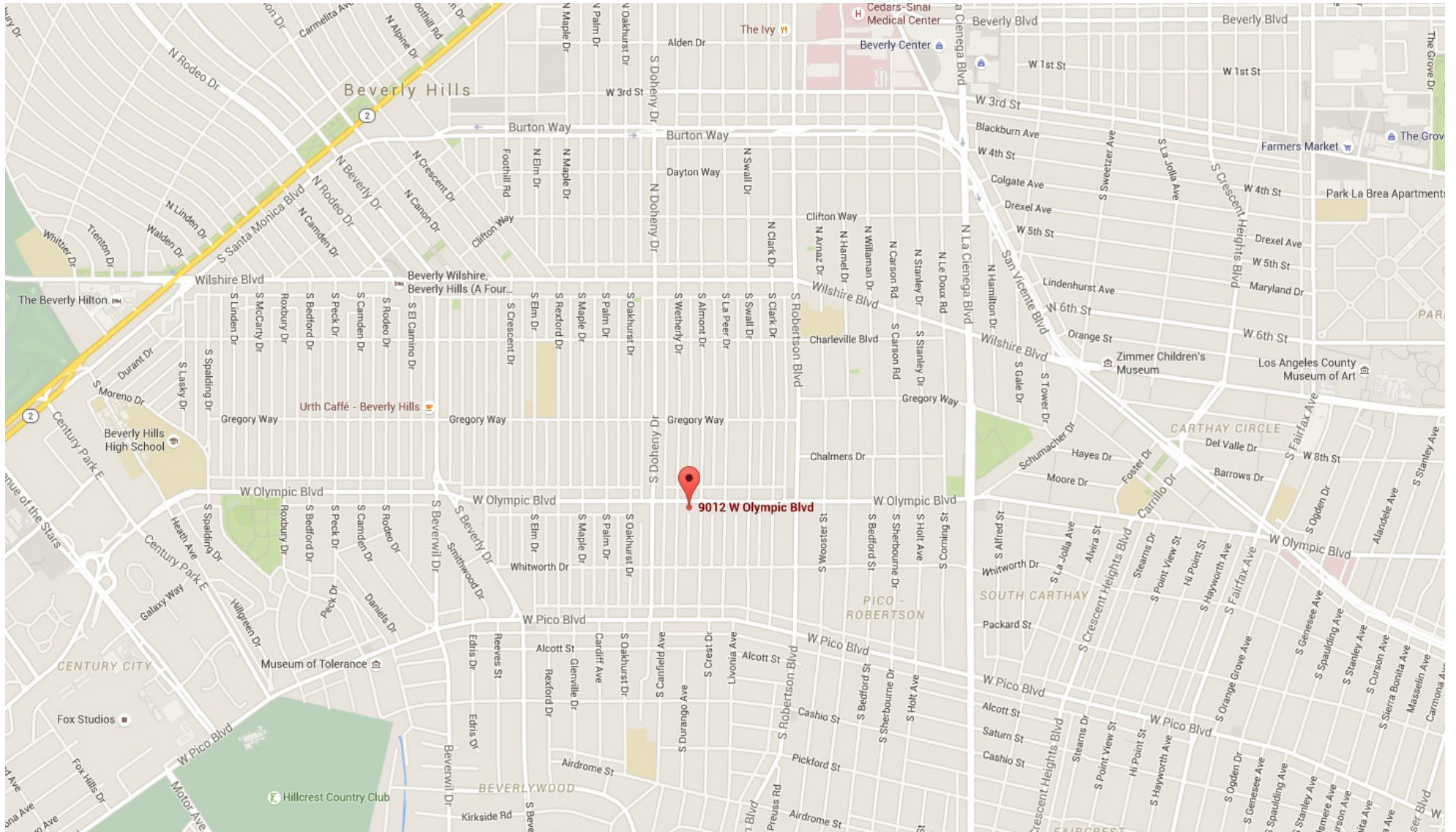
ADDITIONAL PHOTOS

9012-9016 WEST OLYMPIC BOULEVARD, BEVERLY HILLS, CA 90211



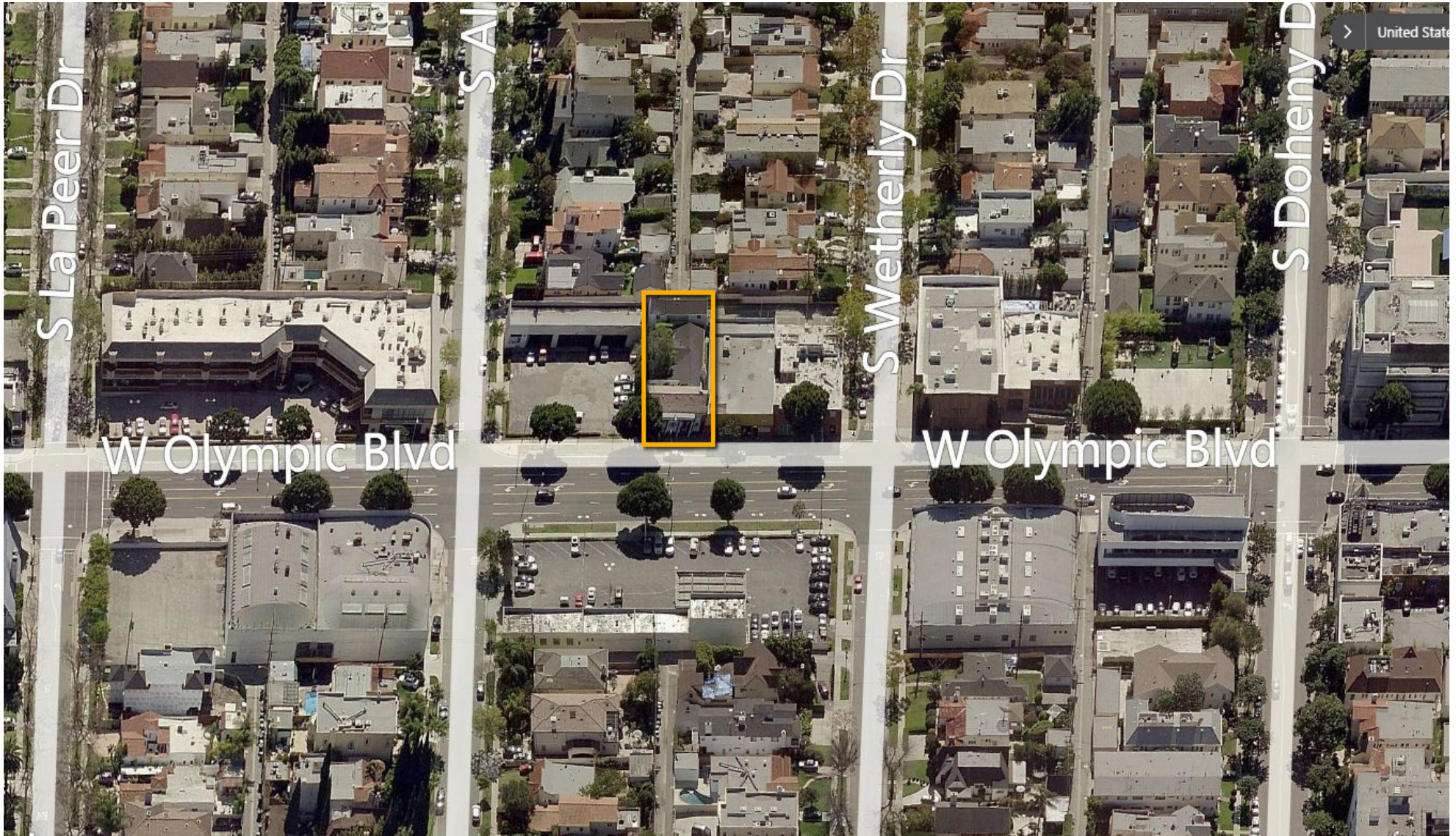
MAP

9012-9016 WEST OLYMPIC BOULEVARD, BEVERLY HILLS, CA 90211



AERIAL

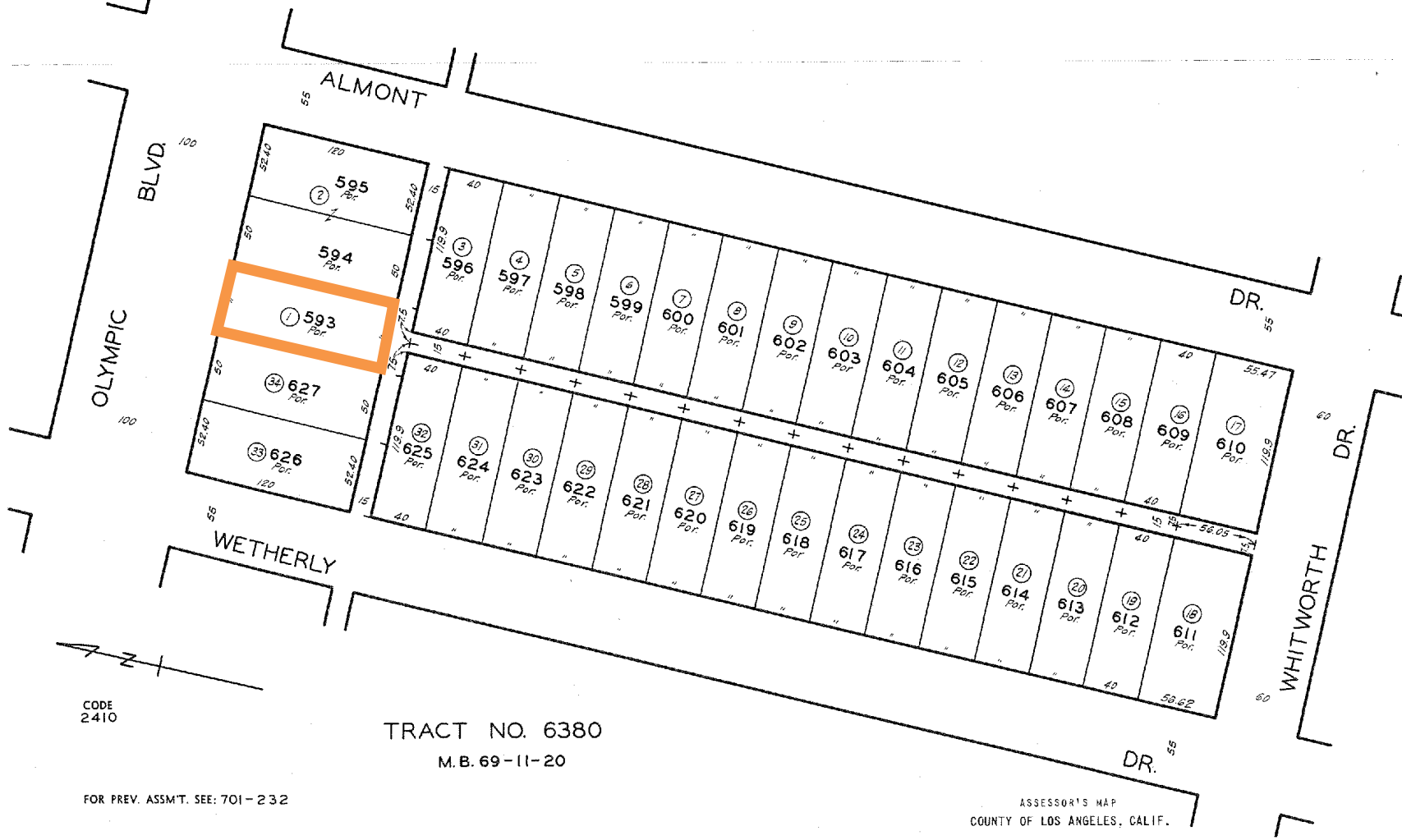
9012-9016 WEST OLYMPIC BOULEVARD, BEVERLY HILLS, CA 90211



PLAT MAP

9012-9016 WEST OLYMPIC BOULEVARD, BEVERLY HILLS, CA 90211

4332 | 7
SCALE 1" = 60'



CODE
2410

TRACT NO. 6380
M.B. 69-11-20

FOR PREV. ASSM'T. SEE: 701-232

ASSESSOR'S MAP
COUNTY OF LOS ANGELES, CALIF.



For more information, please call.



Jason Cole
Managing Director
Phone 818.304.8385
email jasonc@cag-re.com
Lic. 01727670

Commercial Asset Group
1801 Century Park East, Suite 1550
Los Angeles, CA 90067
Phone 310.275.8222
www.cag-re.com
Lic: 01876070

These materials are based on information and content provided by others, which we believe are accurate. No guarantee, warranty or representation is made by Commercial Asset Group, Inc. or its personnel. All interested parties must independently verify accuracy and completeness. As well, any projections, assumptions, opinion, or estimates are used for example only and do not represent the current or future performance of the identified property. Your tax, financial, legal and toxic substance advisors should conduct a careful investigation of the property and its suitability for your needs, including land use limitations. The property is subject to prior lease, sale, change in price, or withdrawal from the market without notice.