

FOR LEASE

SOUTH END GARDENS CORPORATE PARK, PHASE II

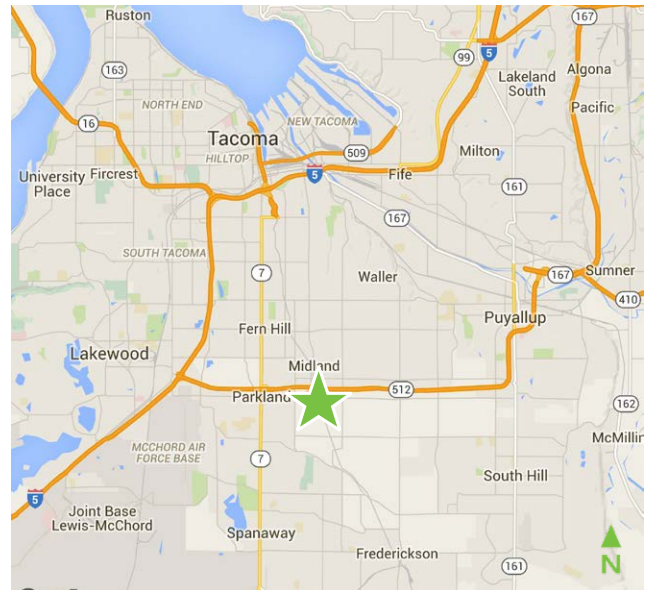
1817
112TH STREET E
Tacoma, WA 98445

WALLS TILTED 1/18/18



PROPERTY FEATURES

- + Class A new construction fronting 112th Street E
- + February 2018 Delivery
- + Less than half mile from SR-512, Portland Avenue exit
- + Flex spaces available: 4,600 - 9,275 SF
 - Build to suit office
- + ±5,000 SF yard available for lease
- + Zoning: Community Employment (CE), Pierce County
- + Five 12' grade-level doors
- + 20' clear height
- + Call for rates



CONTACT US

MONTE DECKER

First Vice President
+1 253 596 0041
monte.decker@cbre.com

CHRIS COWLES

Associate
+1 253 596 0048
chris.cowles@cbre.com

CBRE, INC.

1201 Pacific Avenue
Tacoma, WA 98402

www.cbre.us/tacoma

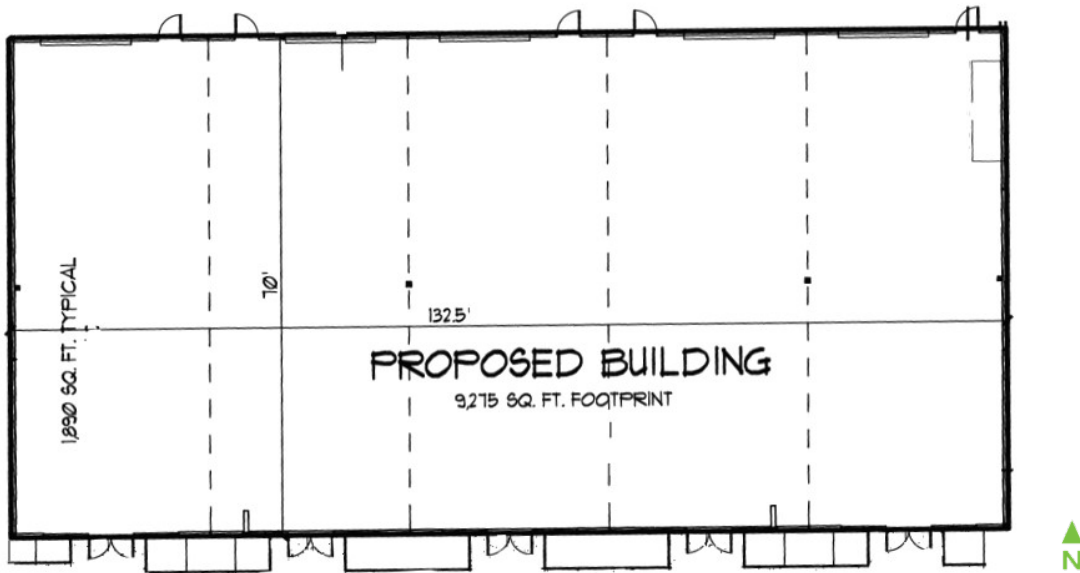
CBRE

FOR LEASE

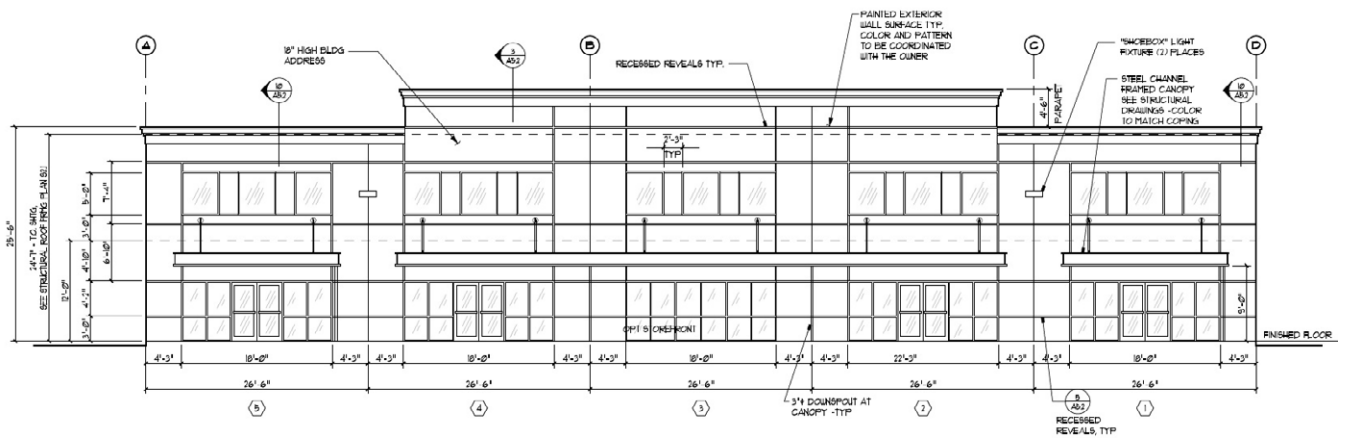
SOUTH END GARDENS CORPORATE PARK, PHASE II



FLOOR PLAN



SOUTH ELEVATION



© 2017 CBRE, Inc. All rights reserved. This information has been obtained from sources believed reliable, but has not been verified for accuracy or completeness. You should conduct a careful, independent investigation of the property and verify all information. Any reliance on this information is solely at your own risk. CBRE and the CBRE logo are service marks of CBRE, Inc. All other marks displayed on this document are the property of their respective owners. Photos herein are the property of their respective owners. Use of these images without the express written consent of the owner is prohibited. rb 013018