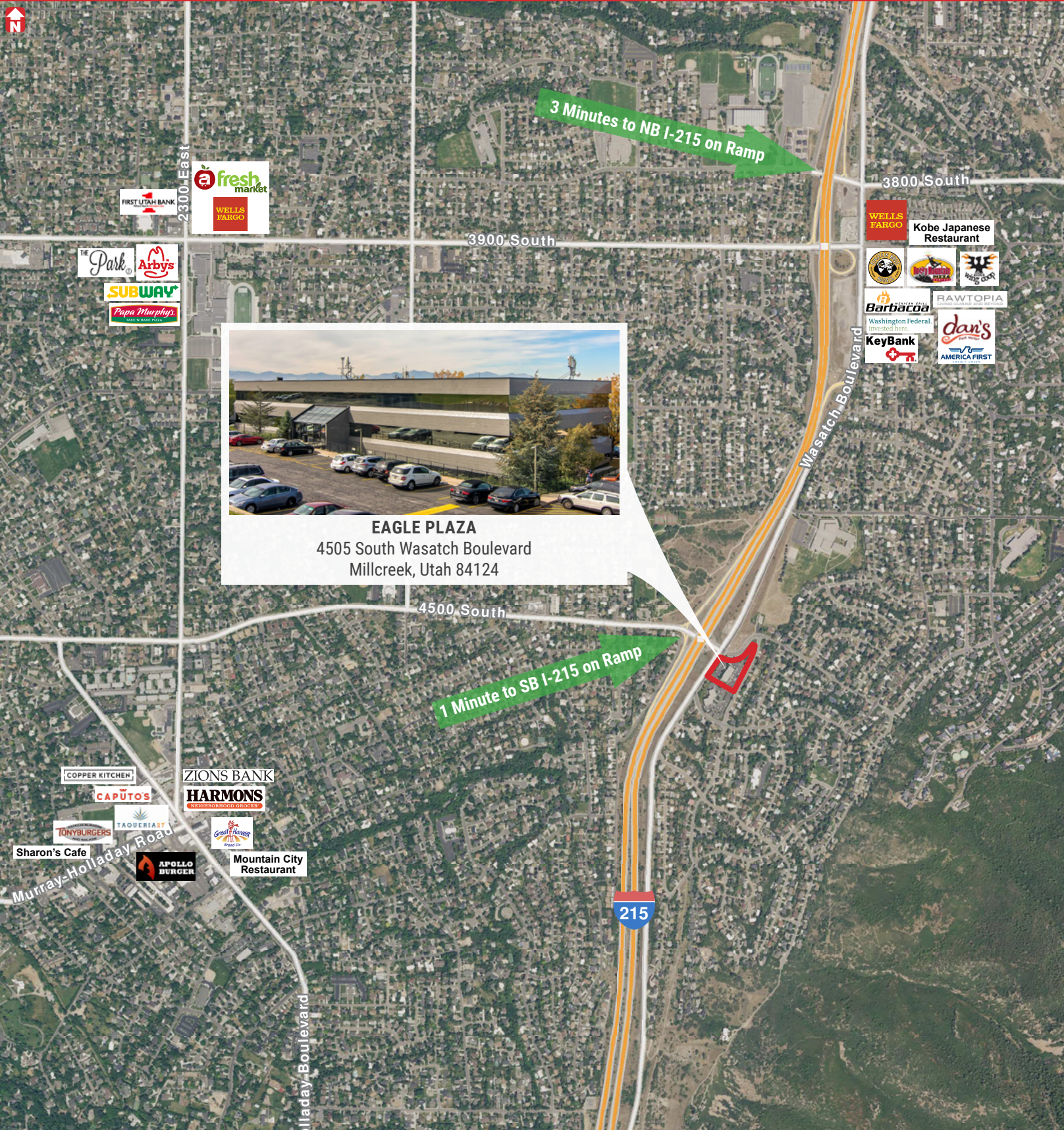


# EAGLE PLAZA

4505 South Wasatch Boulevard, Salt Lake City, Utah 84124

# EAGLE PLAZA

4505 South Wasatch Boulevard, Salt Lake City, Utah 84124



# FOR LEASE

\$18.95 PSF/YEAR  
FULL SERVICE

## PROPERTY FEATURES

- 2,239 RSF Available
- 4/1,000 Parking Ratio
- Beautiful Mountain and Valley Views
- Easy Access from I-215
- Close Proximity to Nearby Amenities
- Large Shared Kitchen Available to All Tenants

FOR MORE  
INFORMATION  
CONTACT

**CASEY MILLS, CCIM, SIOR**  
801.578.5556  
casey.mills@ngkf.com

**COLLIN PERKINS, MBA**  
801.578.5575  
collin.perkins@ngkf.com

**DEREK SAWAYA**  
801.746.4730  
derek.sawaya@ngkf.com



376 East 400 South, Suite 120 | Salt Lake City, Utah 84111 | 801.578.5555 | [www.ngacres.com](http://www.ngacres.com)

This document has been prepared by Newmark Knight Frank for advertising and general information purposes only. While the information contained herein has been obtained from what are believed to be reliable sources, the same has not been verified for accuracy or completeness. Newmark Knight Frank accepts no responsibility or liability for the information contained in this document. Any interested party should conduct an independent investigation to verify the information contained herein.

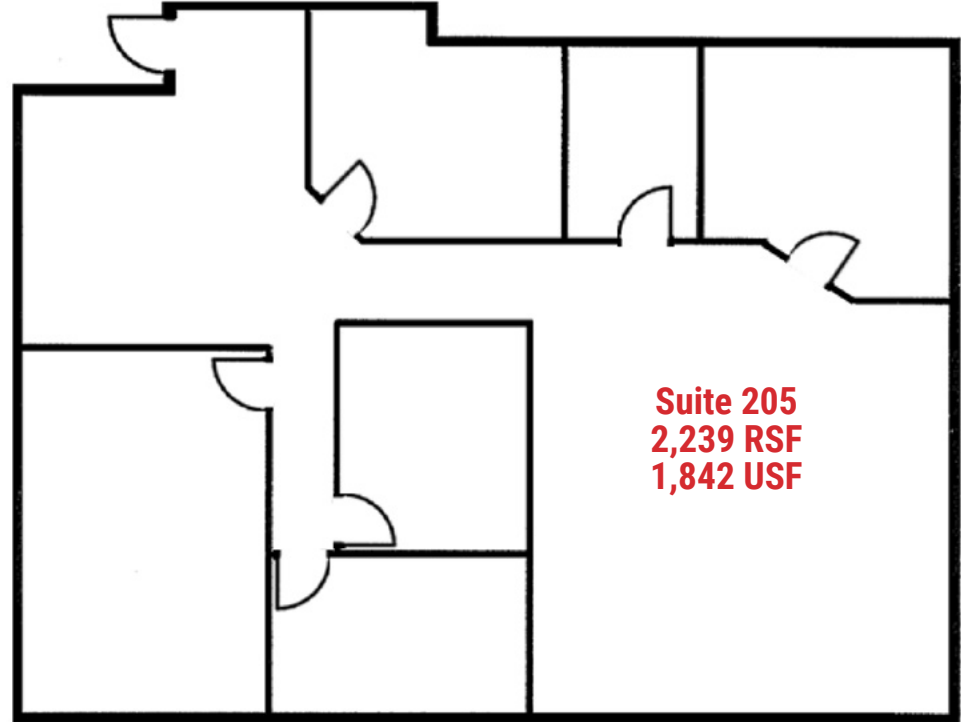


376 East 400 South, Suite 120 | Salt Lake City, Utah 84111 | 801.578.5555 | [www.ngacres.com](http://www.ngacres.com)

This document has been prepared by Newmark Knight Frank for advertising and general information purposes only. While the information contained herein has been obtained from what are believed to be reliable sources, the same has not been verified for accuracy or completeness. Newmark Knight Frank accepts no responsibility or liability for the information contained in this document. Any interested party should conduct an independent investigation to verify the information contained herein.

# EAGLE PLAZA

4505 South Wasatch Boulevard, Salt Lake City, Utah 84124



All square footage numbers are as provided by Landlord. Although we believe these numbers to be accurate, tenant is responsible for verifying this information.