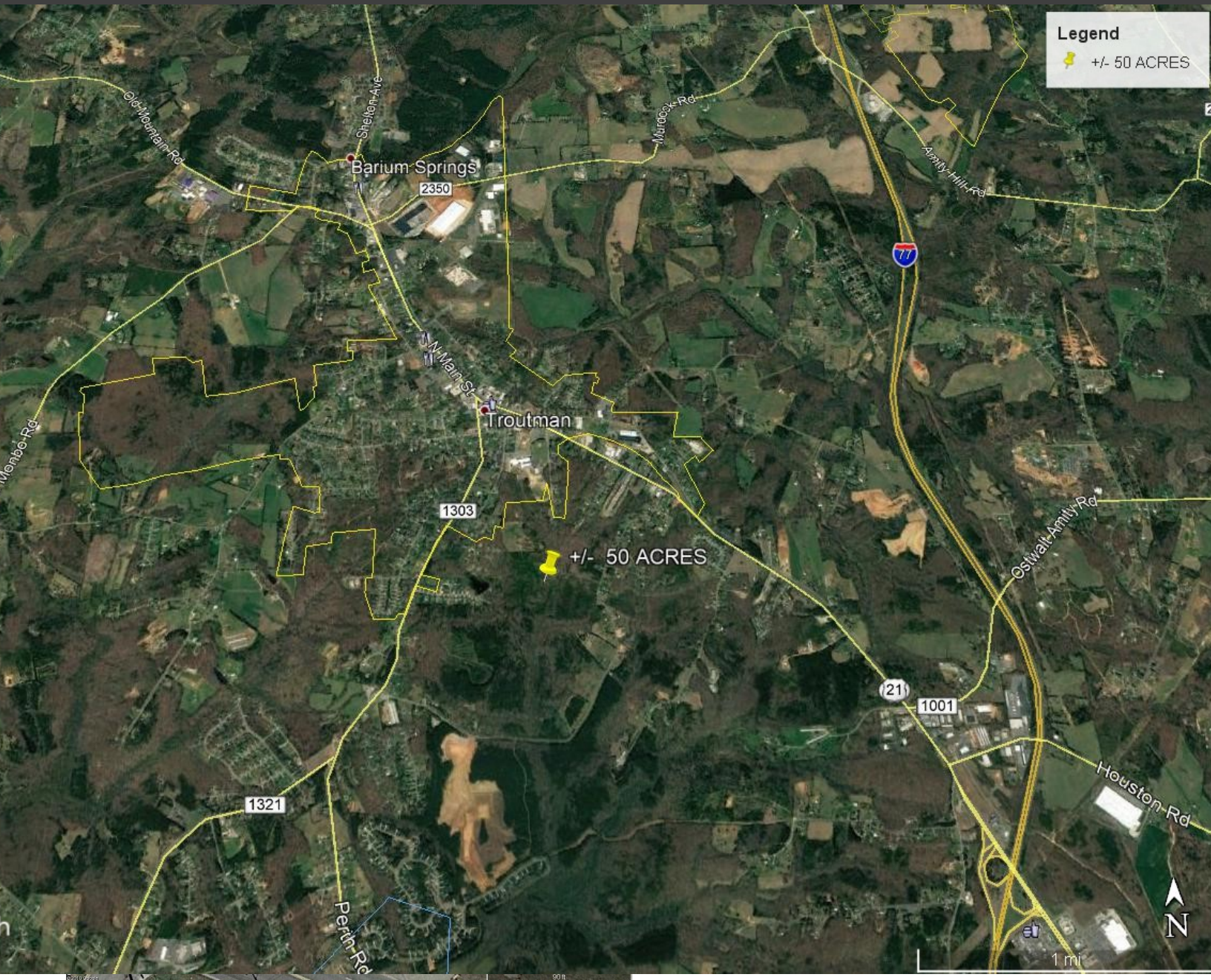


DEVELOPERS !!! 50 ACRES IN THE HEART OF TROUTMAN, NC



50 acres in the heart of Troutman, NC. Close to elementary and middle school. Zoned R-20. Close to city water and sewer. Not in the city limits but surrounded by properties that are. This area is experiencing explosive residential, commercial and industrial growth. Easy access to I-77. This property is highly suitable for a single-family residential community development.

Frank Harmon

fharmon@equitycp.com

704-799-9202 Office

704-677-5320 Cell

114 Morlake

Suite 104

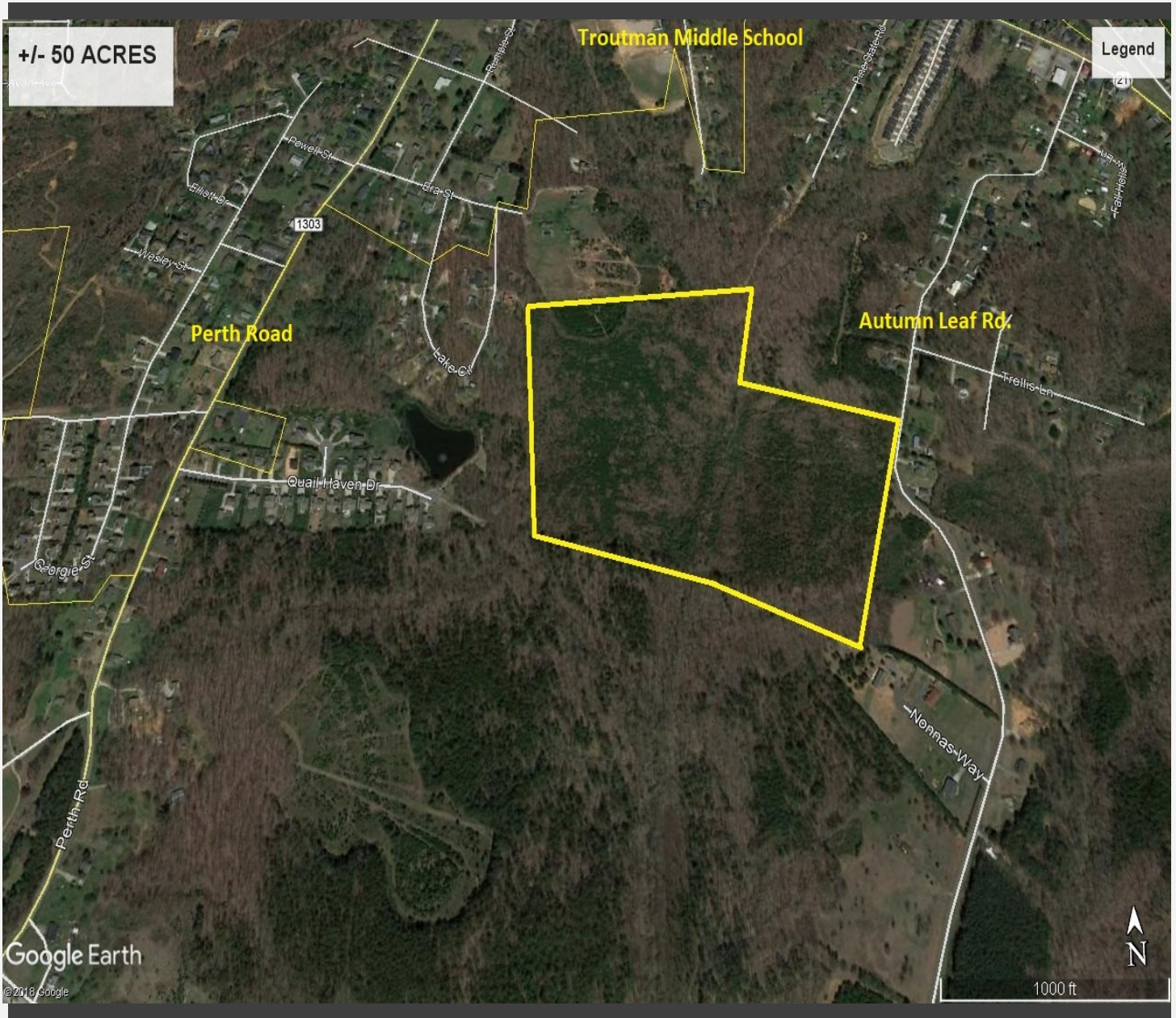
Mooresville, NC



Equity Commercial Properties

EquityCP.com

Great Location

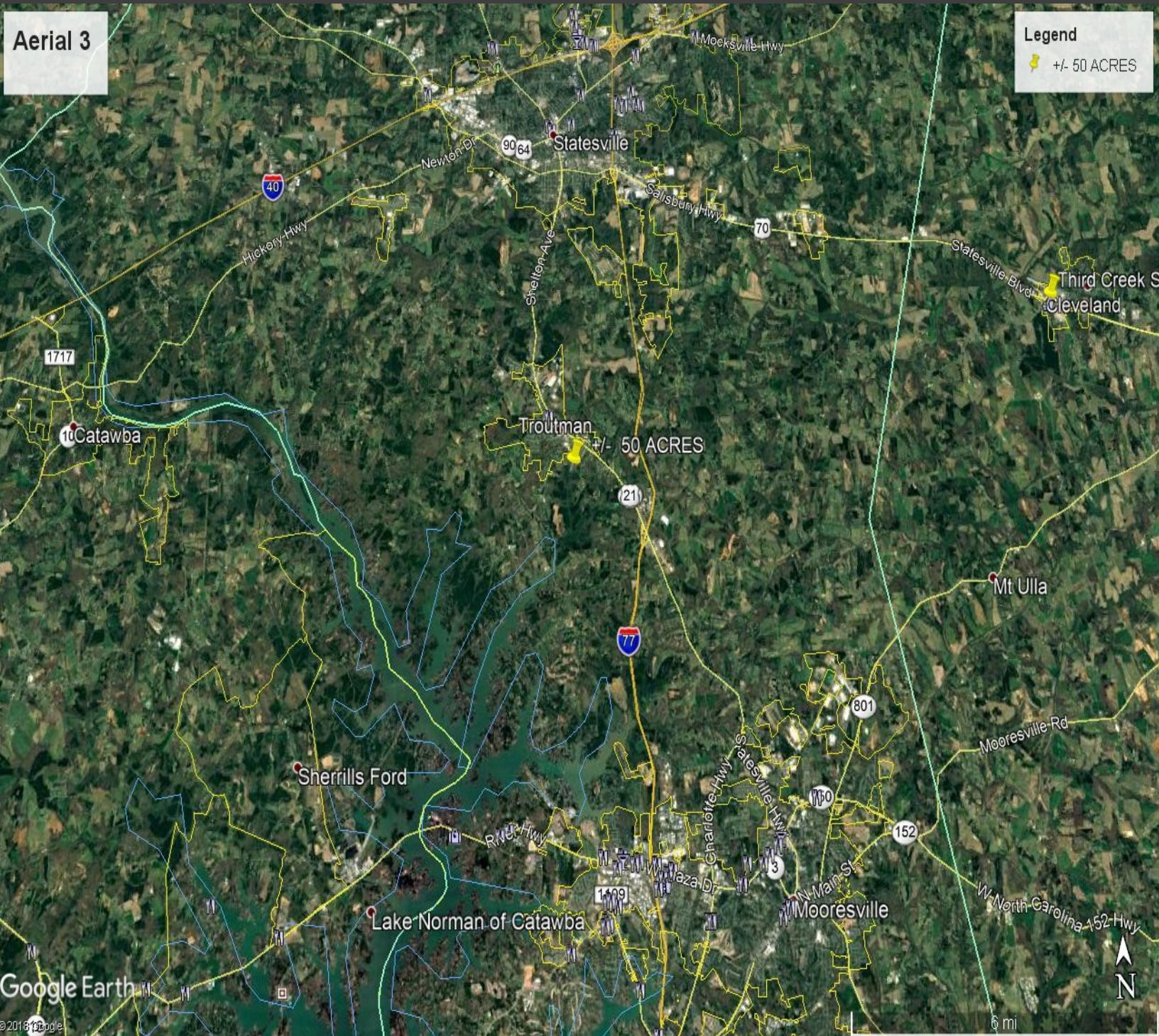


Equity Commercial Properties

114 Morlake Dr.
Suite 104
Mooresville, NC

Office 704-799-9202
EquityCP.com

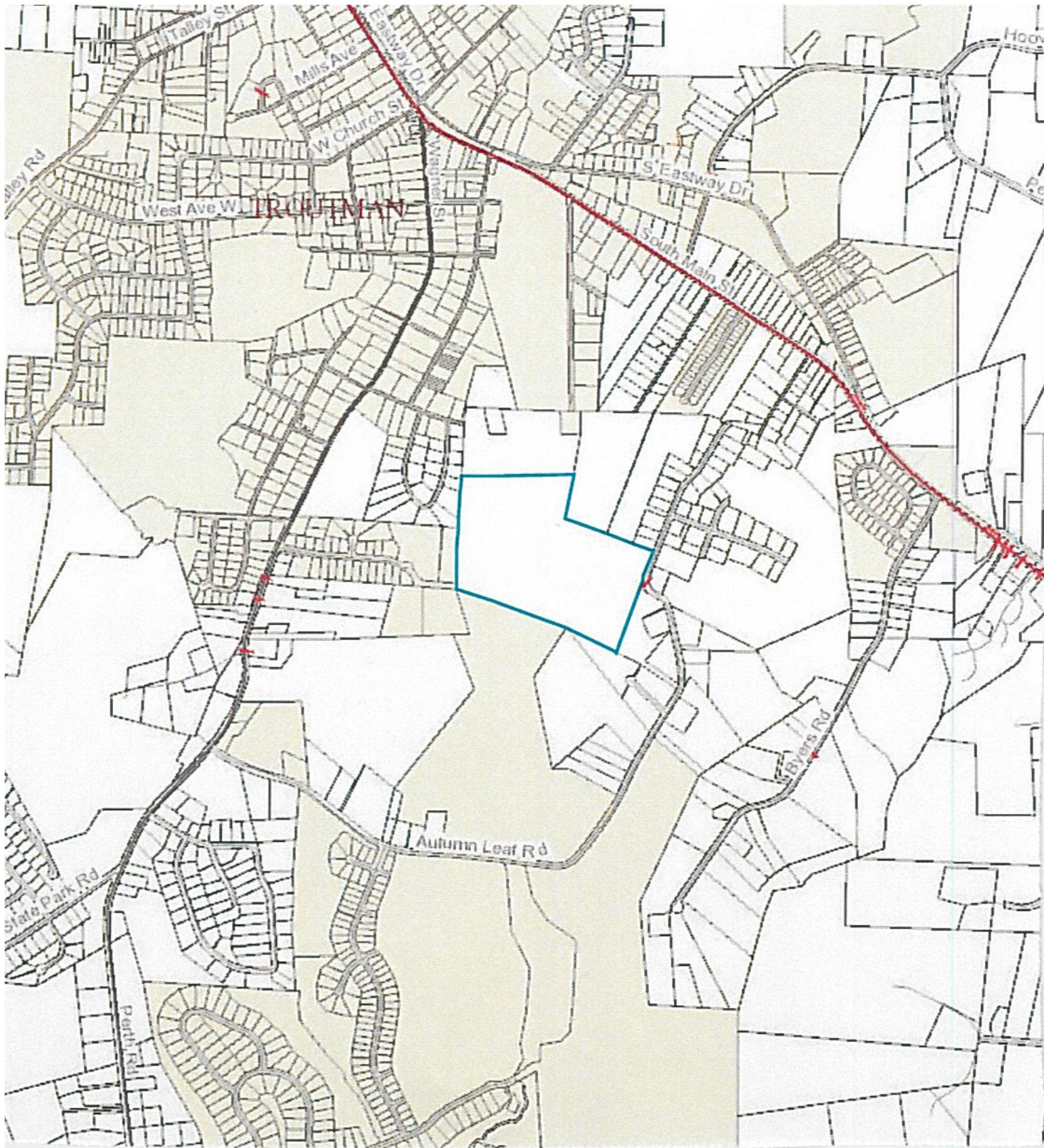
In Perth Road High Growth Area



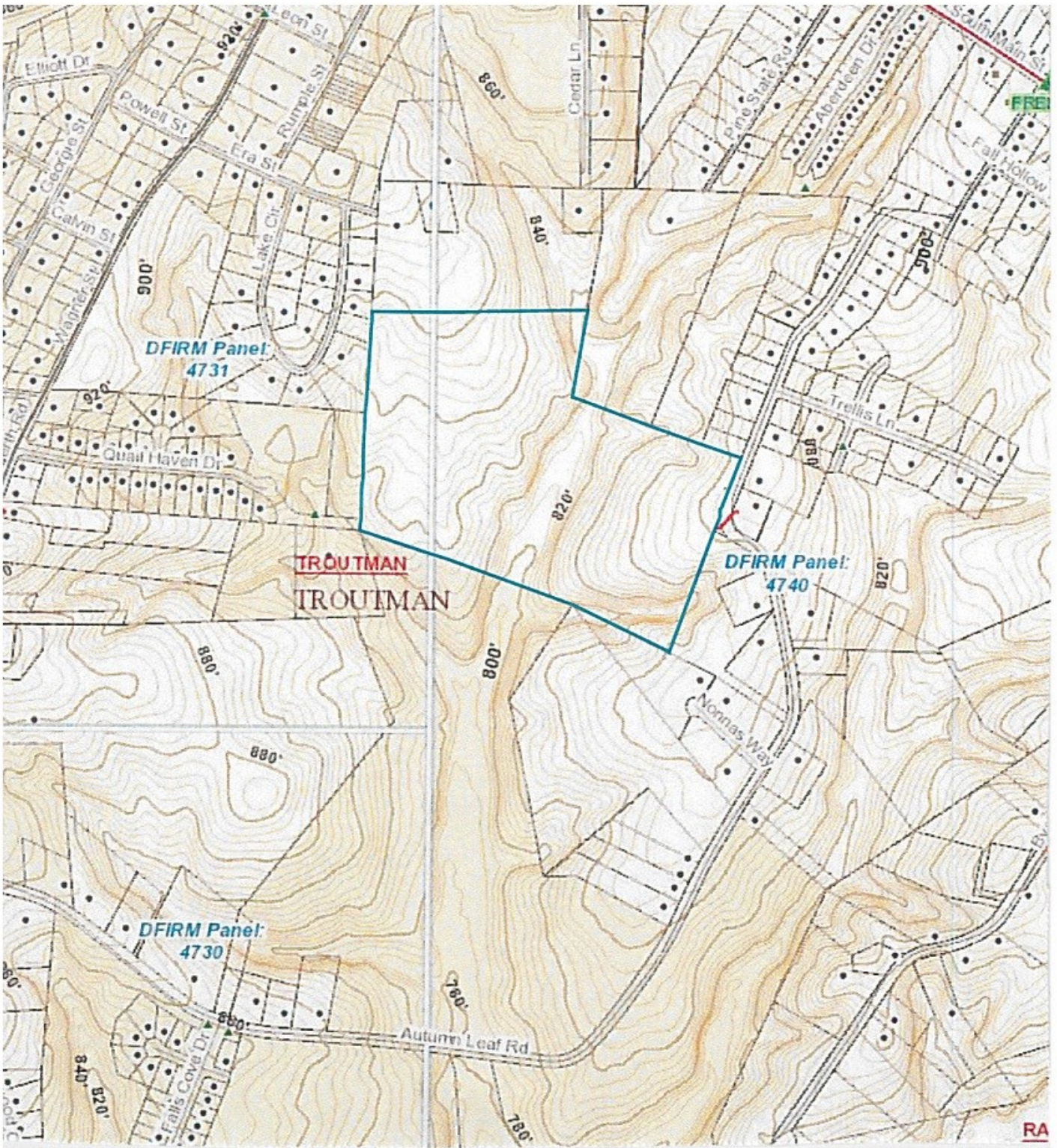
Equity Commercial Properties

114 Morlake Dr.
Suite 104
Mooresville, NC

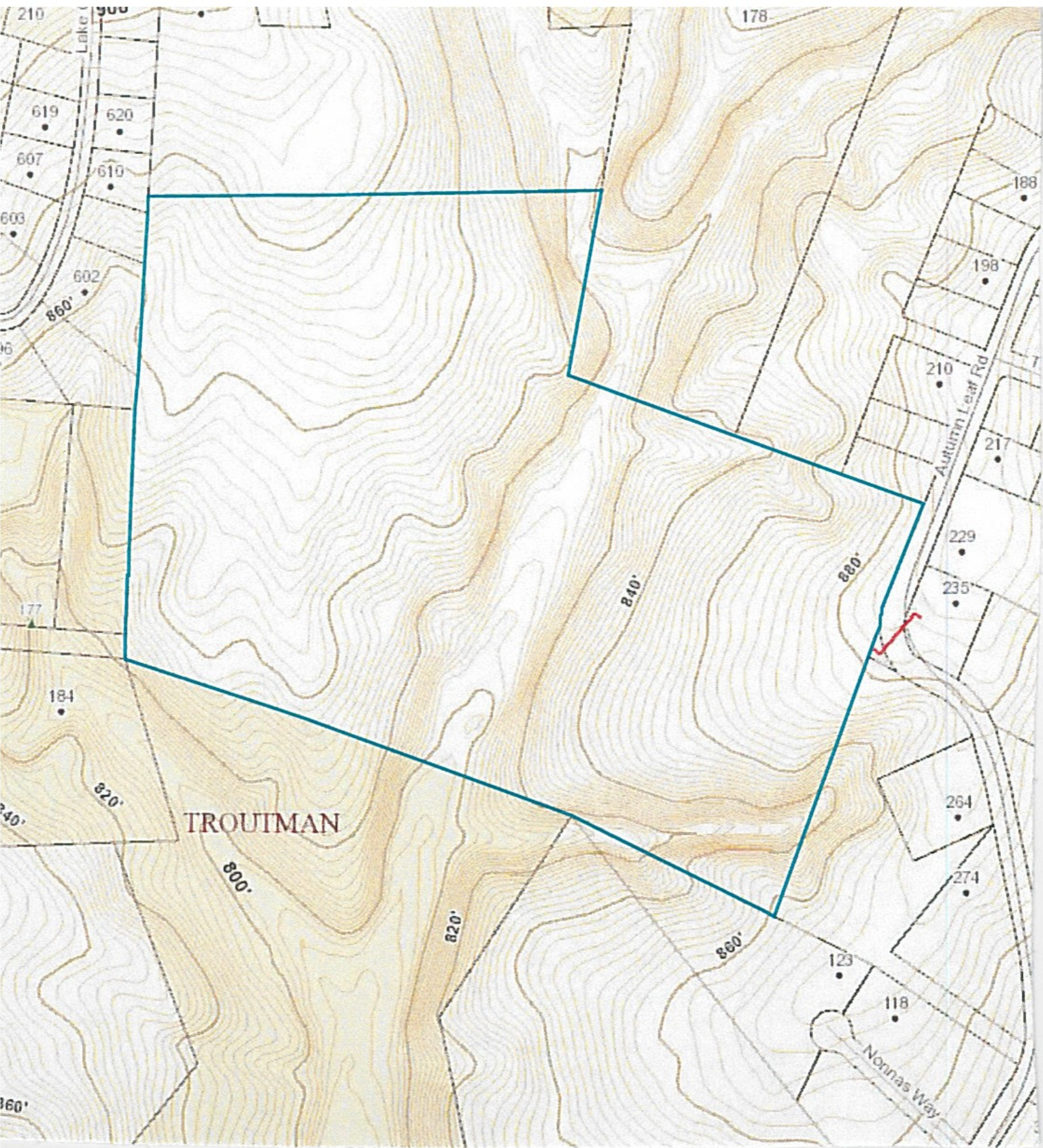
Office 704-799-9202
EquityCP.com



Location Plat



Plat with Topo



Topography