



# For Lease

±3,499 SF Office Suite



Excellent access to major freeways

On-site property management

Building signage available

Custom tenant improvements

Flexible terms

\$2.95 PSF, Full Service

## Contact

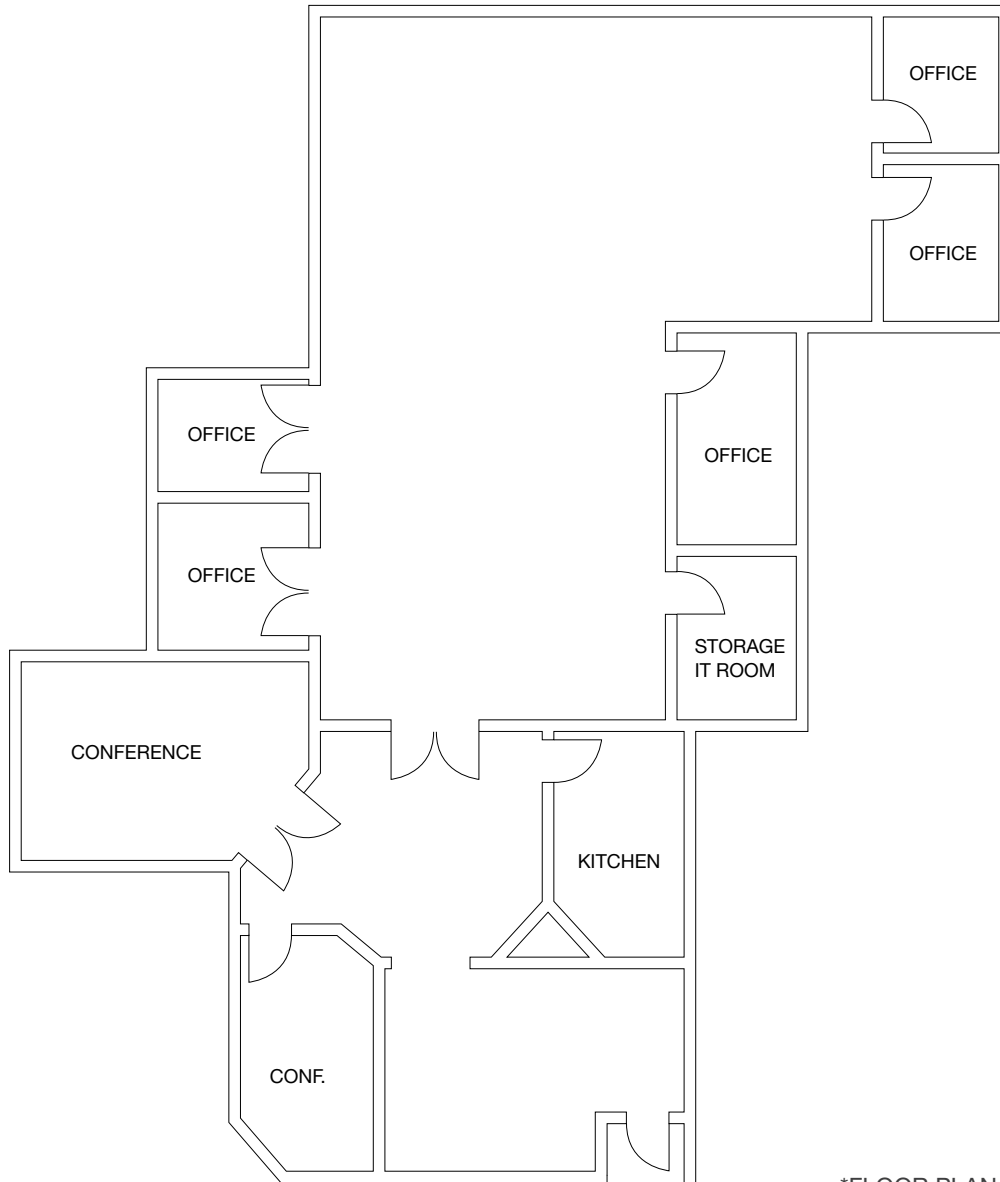
**Chad S. Leiker**  
408.588.2335  
csleiker@kiddermathews.com  
LIC #01303233

**Nathan Slater**  
408.588.2329  
nslater@kiddermathews.com  
LIC #02024565

[kiddermathews.com](http://kiddermathews.com)

# For Lease

±3,499 SF Office Suite | 3190 S. Bascom Ave, Suite 230



\*FLOOR PLAN NOT TO SCALE

## Contact

**Chad S. Leiker**  
408.588.2335  
csleiker@kiddermathews.com  
LIC #01303233

**Nathan Slater**  
408.588.2329  
nslater@kiddermathews.com  
LIC #02024565

[kiddermathews.com](http://kiddermathews.com)

This information supplied herein is from sources we deem reliable. It is provided without any representation, warranty or guarantee, expressed or implied as to its accuracy. Prospective Buyer or Tenant should conduct an independent investigation and verification of all matters deemed to be material, including, but not limited to, statements of income and expenses. Consult your attorney, accountant, or other professional advisor.

