

# CHURCH PROPERTY FOR SALE

**22,808± TOTAL SF ON 5.5± ACRES**

**FOUNDRY**  
COMMERCIAL



**Asking Price \$1,200,000**

**MABLETON GA - 5499 BURDETT RD SE**

## PROPERTY FEATURES

- 22,808± Total SF
- 5.5± Acres
- Sanctuary Seats 360±
- Multiple Classrooms/Offices
- Kitchen
- Fellowship Hall
- Paved Parking
- Zoning R20 (residential) per Cobb County
- Includes a residential building of 1,286± SF with a basement
- Located between East-West Connector and Veterans Memorial Hwy just minutes from I-285



For more information, please contact:

### **BILL PALASKI**

Associate

678.463.4410

[bill.palaski@foundrycommercial.com](mailto:bill.palaski@foundrycommercial.com)

Although all information is furnished regarding for sale, rental or financing is from sources we deem reliable, such information has not been verified and no express representation is made nor is any to be implied as to the accuracy thereof, and it is submitted subject to errors, omissions, changes of price, rental or other conditions, prior sale, lease or financing, or withdrawal without notice. All sizes approximate and subject to survey.

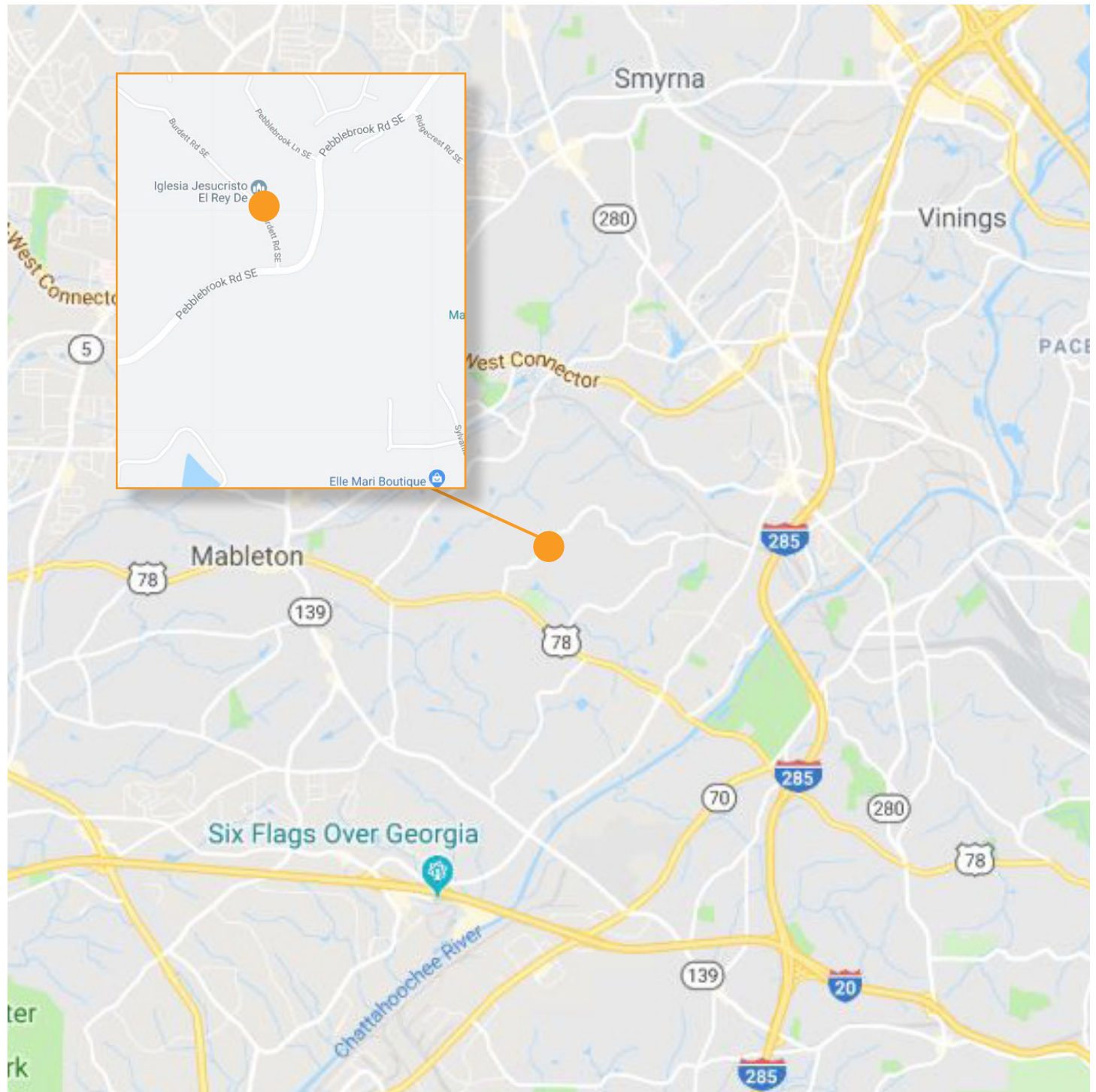
3520 Piedmont Rd NE Suite 360  
Atlanta, GA 30305

[foundrycommercial.com](http://foundrycommercial.com)

# CHURCH PROPERTY FOR SALE

**22,808± TOTAL SF ON 5.5± ACRES**

## LOCATION



For more information, please contact:

**BILL PALASKI**  
Associate  
678.463.4410  
bill.palaski@foundrycommercial.com

Although all information is furnished regarding for sale, rental or financing is from sources we deem reliable, such information has not been verified and no express representation is made nor is any to be implied as to the accuracy thereof, and it is submitted subject to errors, omissions, changes of price, rental or other conditions, prior sale, lease or financing, or withdrawal without notice. All sizes approximate and subject to survey.

**FOUNDRY**  
COMMERCIAL

3520 Piedmont Rd NE Suite 360  
Atlanta, GA 30305

[foundrycommercial.com](http://foundrycommercial.com)



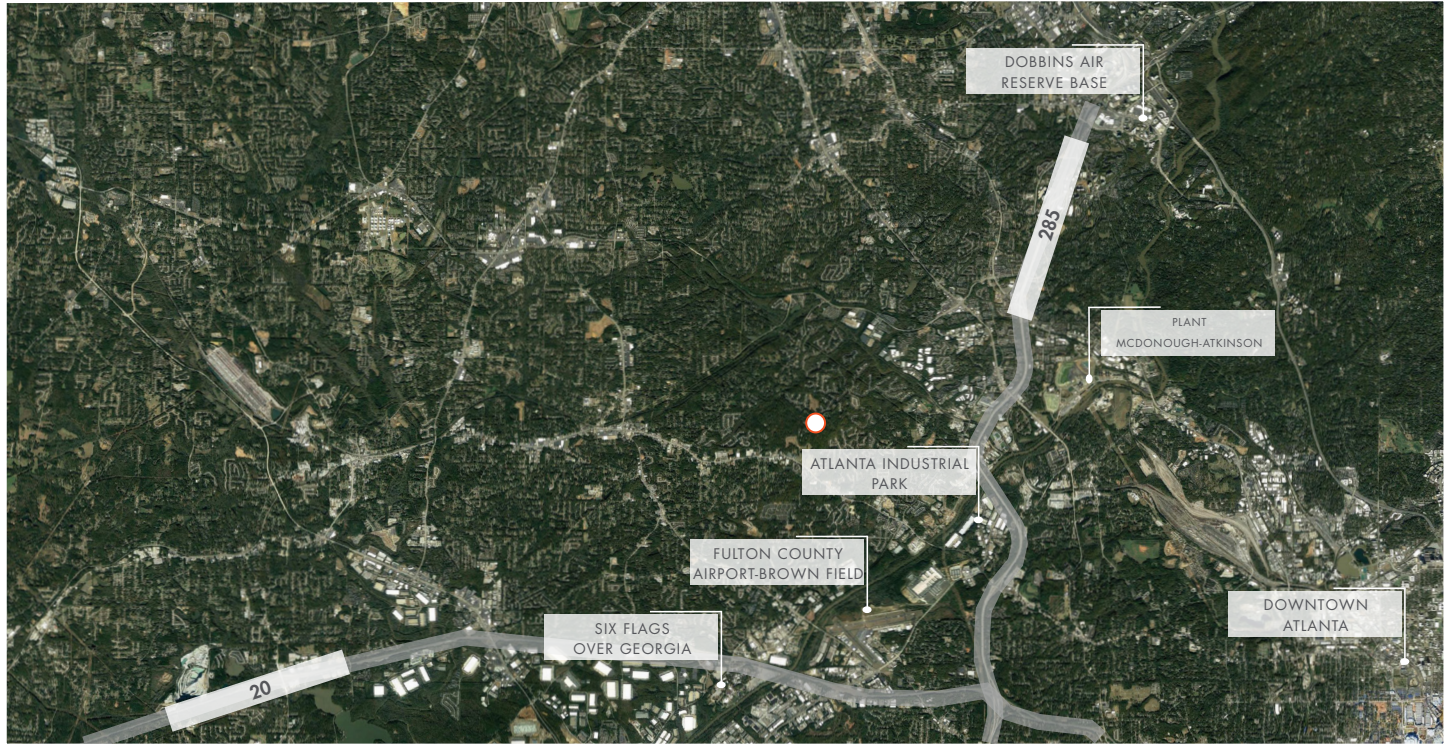
# CHURCH PROPERTY FOR SALE

22,808± TOTAL SF ON 5.5± ACRES

## AERIAL & PROPERTY OUTLINE



## LANDMARK MAP



For more information, please contact:

**BILL PALASKI**

Associate

678.463.4410

bill.palaski@foundrycommercial.com

**FOUNDRY**  
COMMERCIAL

3520 Piedmont Rd NE Suite 360  
Atlanta, GA 30305

[foundrycommercial.com](http://foundrycommercial.com)

Although all information is furnished regarding for sale, rental or financing is from sources we deem reliable, such information has not been verified and no express representation is made nor is any to be implied as to the accuracy thereof, and it is submitted subject to errors, omissions, changes of price, rental or other conditions, prior sale, lease or financing, or withdrawal without notice. All sizes approximate and subject to survey.



# CHURCH PROPERTY FOR SALE

22,808± TOTAL SF ON 5.5± ACRES

## PROPERTY PHOTOS



Sanctuary Front View



Sanctuary Rear View



Office



Classroom



Classroom



Pastor's Study

For more information, please contact:

**BILL PALASKI**

Associate

678.463.4410

[bill.palaski@foundrycommercial.com](mailto:bill.palaski@foundrycommercial.com)

Although all information is furnished regarding for sale, rental or financing is from sources we deem reliable, such information has not been verified and no express representation is made nor is any to be implied as to the accuracy thereof, and it is submitted subject to errors, omissions, changes of price, rental or other conditions, prior sale, lease or financing, or withdrawal without notice. All sizes approximate and subject to survey.

**FOUNDRY**  
COMMERCIAL

3520 Piedmont Rd NE Suite 360  
Atlanta, GA 30305

[foundrycommercial.com](http://foundrycommercial.com)



# CHURCH PROPERTY FOR SALE

22,808± TOTAL SF ON 5.5± ACRES

## PROPERTY PHOTOS



Kitchen



Fellowship Hall



Classroom



Playground



Residential Home



Church Exterior

For more information, please contact:

**BILL PALASKI**  
Associate  
678.463.4410  
bill.palaski@foundrycommercial.com

Although all information is furnished regarding for sale, rental or financing is from sources we deem reliable, such information has not been verified and no express representation is made nor is any to be implied as to the accuracy thereof, and it is submitted subject to errors, omissions, changes of price, rental or other conditions, prior sale, lease or financing, or withdrawal without notice. All sizes approximate and subject to survey.

**FOUNDRY**  
COMMERCIAL

3520 Piedmont Rd NE Suite 360  
Atlanta, GA 30305

[foundrycommercial.com](http://foundrycommercial.com)