



±31,000 SF Flex Space

11777 Industriplex Blvd, Baton Rouge, Louisiana
70809

Property Highlights

- ±31,000 SF of flex space available for sale or lease
- Space can be subdivided and converted to warehouse with docks
- Truck wells can be installed in the rear, easy truck access
- Additional yard area available
- Building is fully conditioned, has a 20' eave height
- TI available with long term lease
- Grade-level in front of building
- Property is set to go to Auction June 14th
- Link: <https://www.ten-x.com/commercial/listing/11777-industriplex-blvd-baton-rouge-la-70809/1000014559/>



For more information

Ty Gose, SIOR, CCIM

O: 225 295 0800 | C: 225 297 7808
ty@latterblum.com

Michael Cashio, CCIM

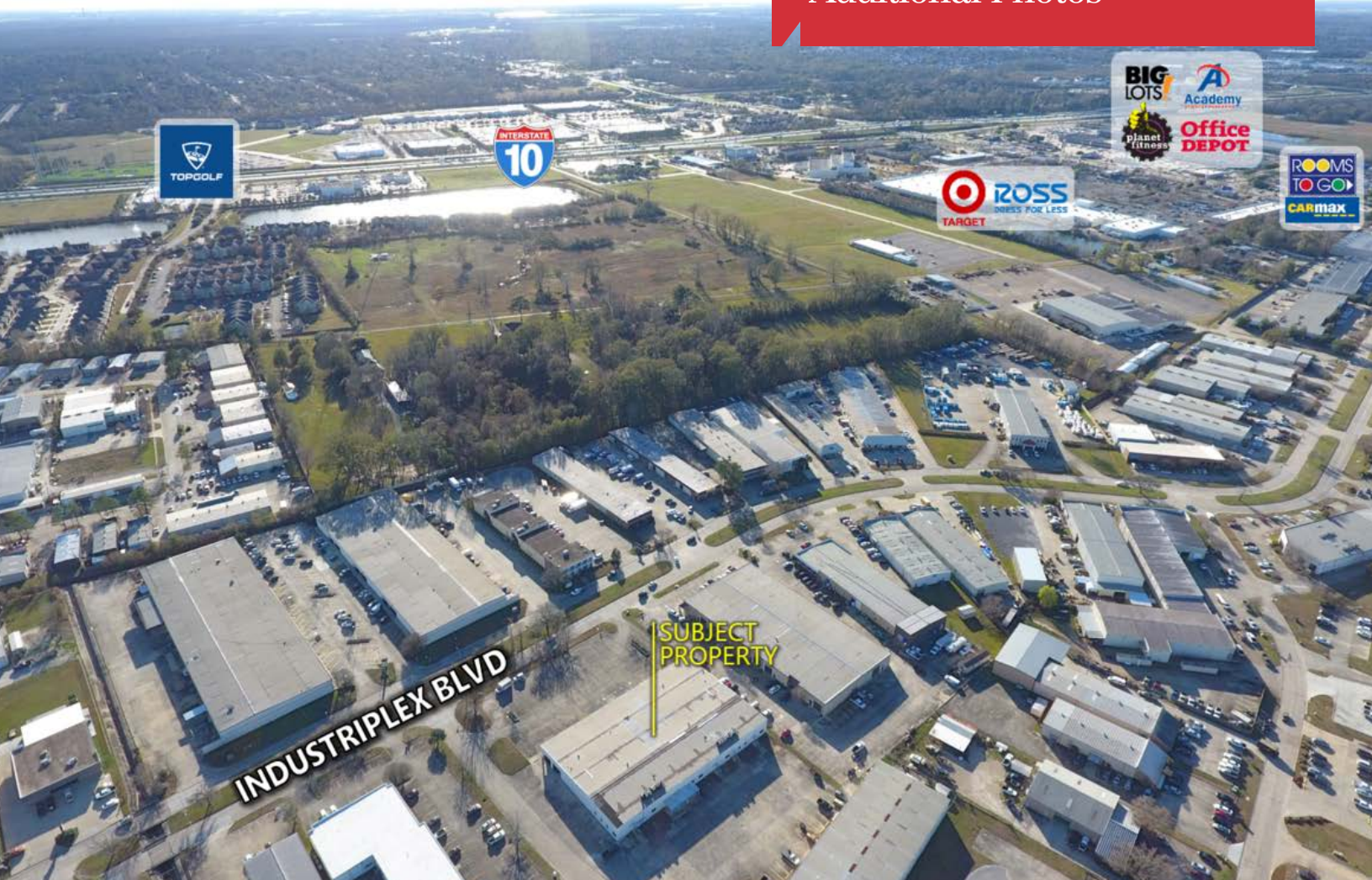
O: 225 295 0800 | C: 225 247 9812
mcashio@latterblum.com

CALL OR EMAIL FOR MORE INFORMATION

NO WARRANTY OR REPRESENTATION, EXPRESS OR IMPLIED, IS MADE AS TO THE ACCURACY OF THE INFORMATION CONTAINED HEREIN, AND THE SAME IS SUBMITTED SUBJECT TO ERRORS, OMISSIONS, CHANGE OF PRICE, RENTAL OR OTHER CONDITIONS, PRIOR SALE, LEASE OR FINANCING, OR WITHDRAWAL WITHOUT NOTICE, AND OF ANY SPECIAL LISTING CONDITIONS IMPOSED BY OUR PRINCIPALS NO WARRANTIES OR REPRESENTATIONS ARE MADE AS TO THE CONDITION OF THE PROPERTY OR ANY HAZARDS CONTAINED THEREIN ARE ANY TO BE IMPLIED. LICENSED IN LOUISIANA.

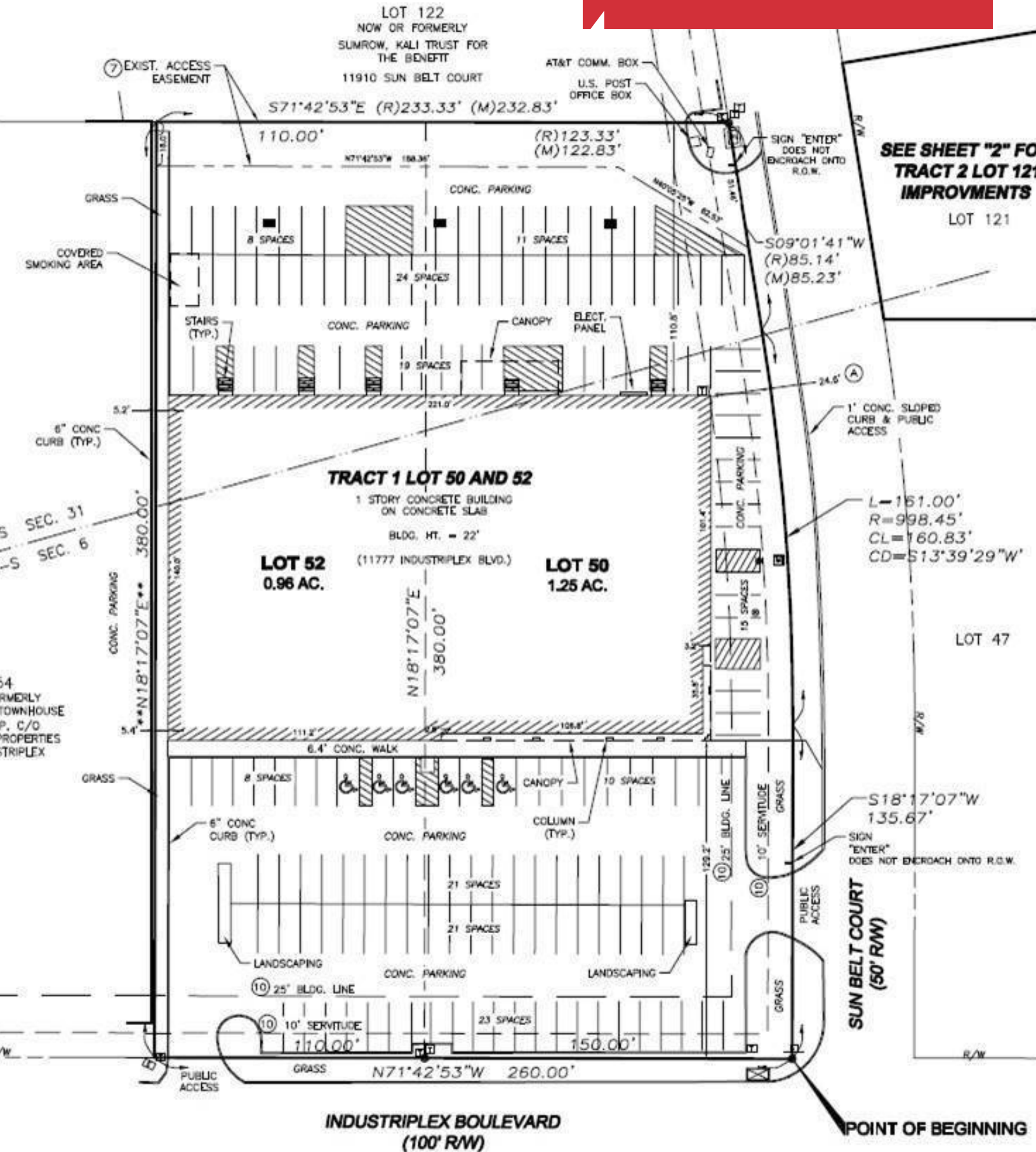
1700 City Farm Drive
Baton Rouge, LA 70806
225 295 0800 tel
latterblum.com

Additional Photos

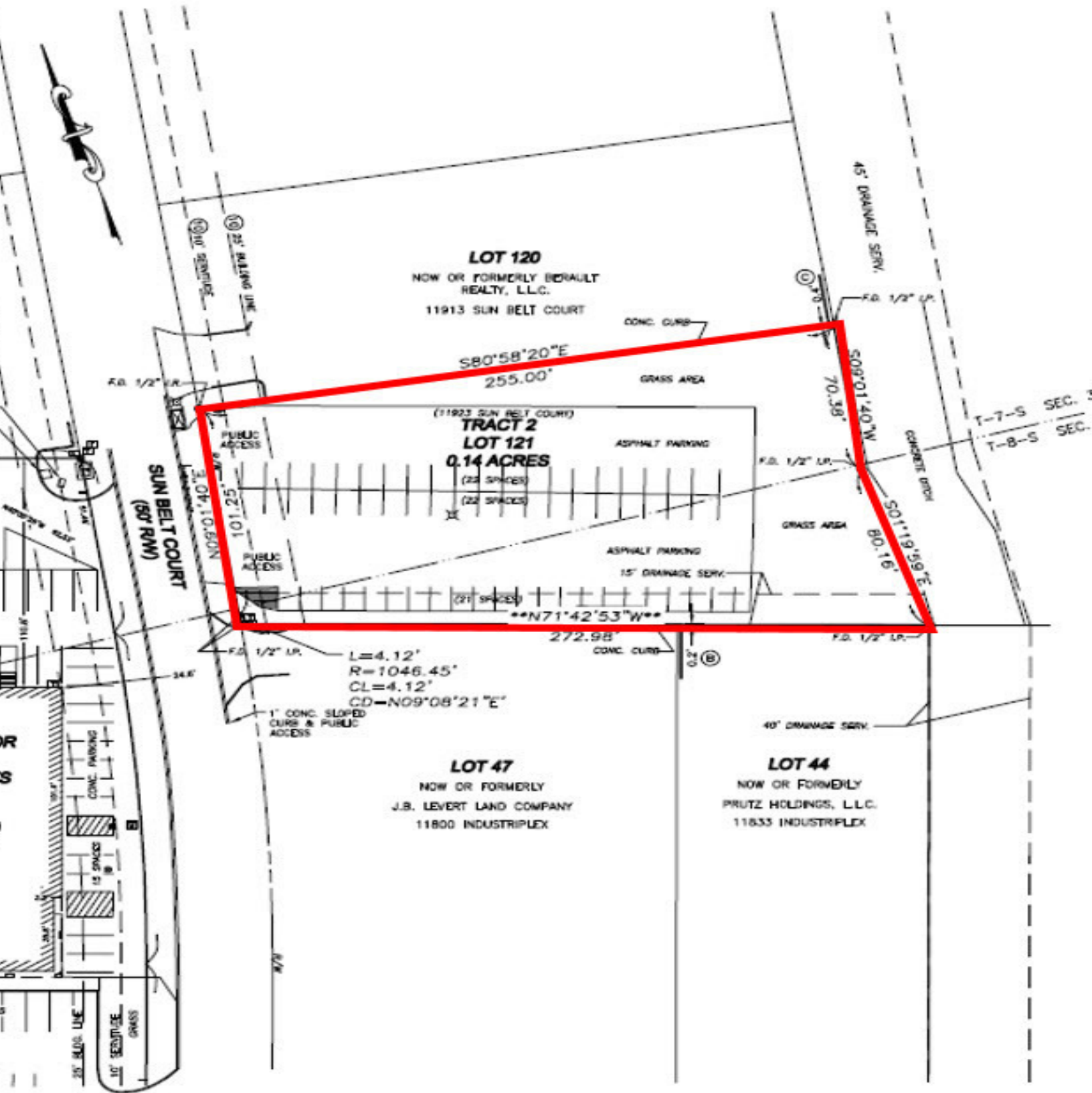


Additional Photos

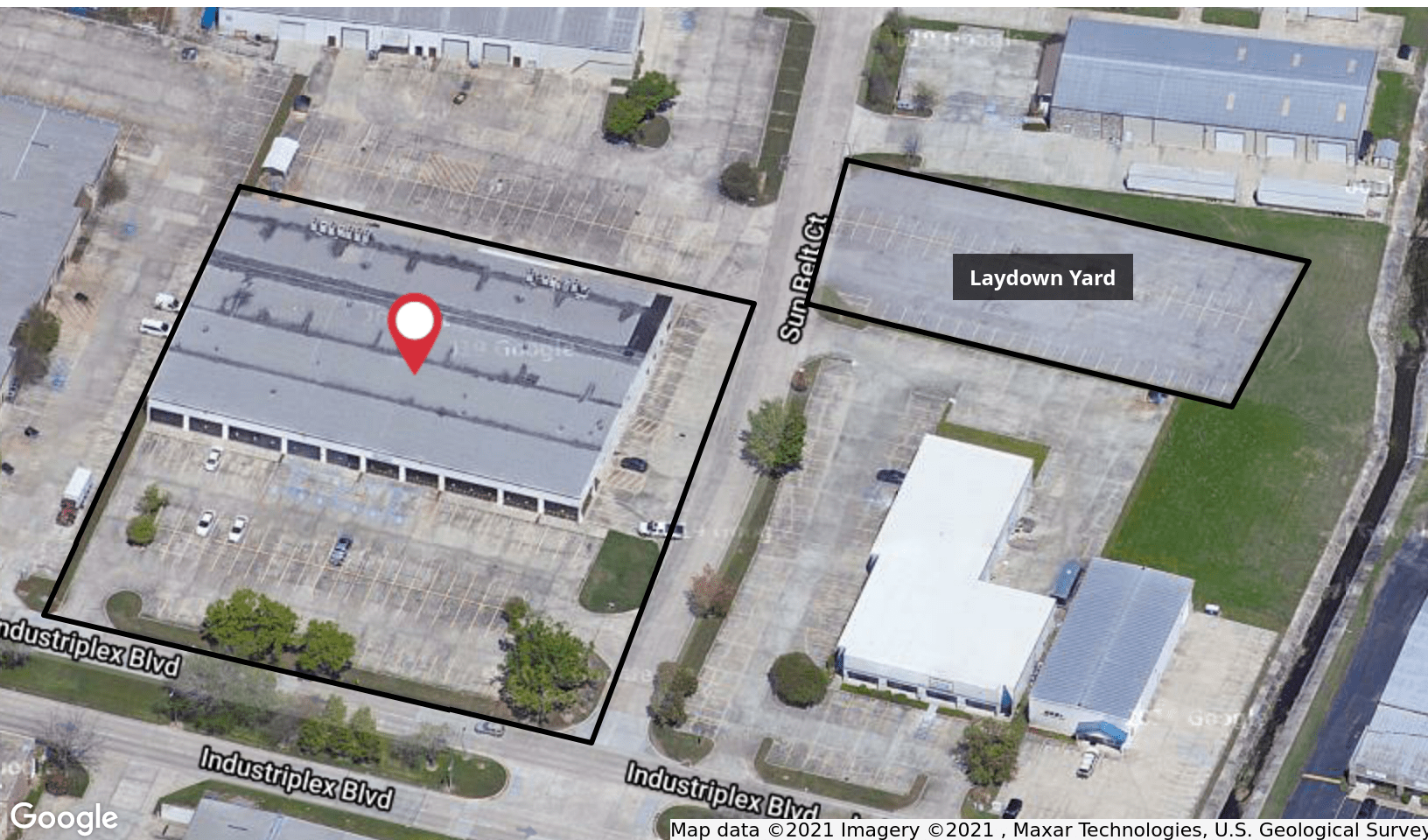




1700 City Farm Drive
 Baton Rouge, LA 70806
 225 295 0800 tel
latterblum.com



Location Maps



1700 City Farm Drive
Baton Rouge, LA 70806
225 295 0800 tel
latterblum.com