

# 666 Broadway

FULL FLOOR IN THE HEART OF NOHO

[CLICK HERE FOR VIRTUAL TOUR](#)



**NEWMARK**



AREA: Entire 8<sup>th</sup> Floor: 8,000 RSF

POSSESSION: Immediate

TERMS: 5 – 10 Years

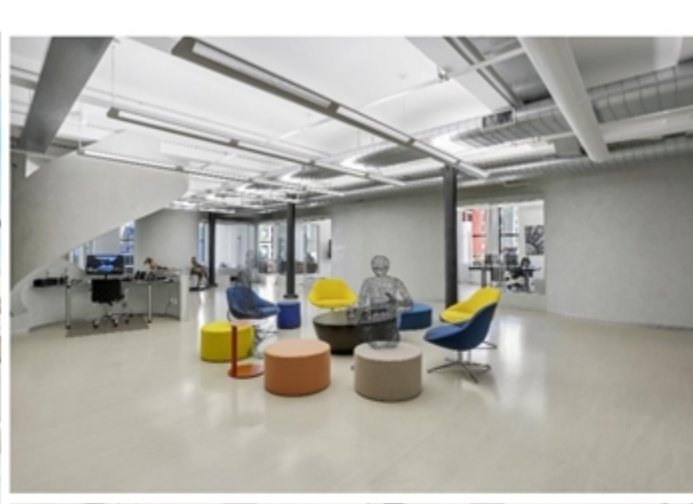
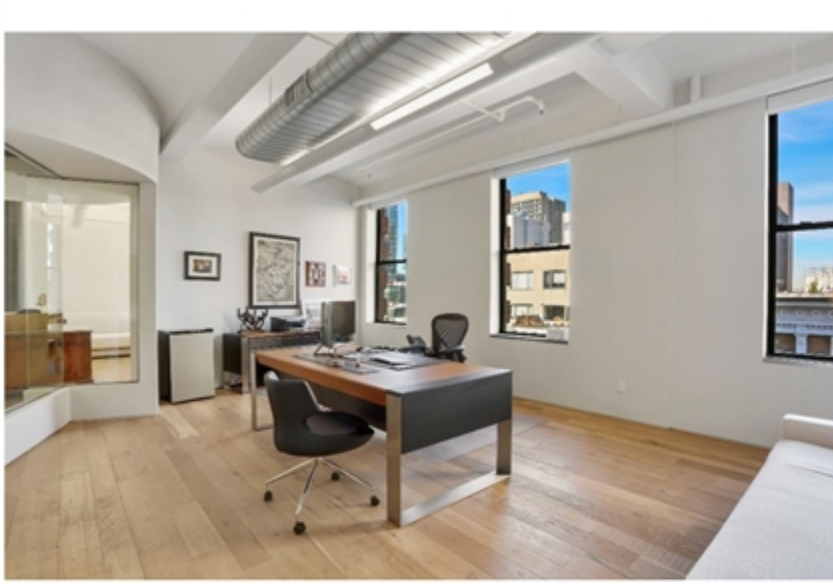
## SPACE HIGHLIGHTS

- Existing installation with 10 perimeter offices/meeting rooms & conference room and large open area.
- Hardwood floors & polished concrete throughout, exposed ceilings.
- Abundant natural light, Broadway & Bond Street exposure.

**NEWMARK**

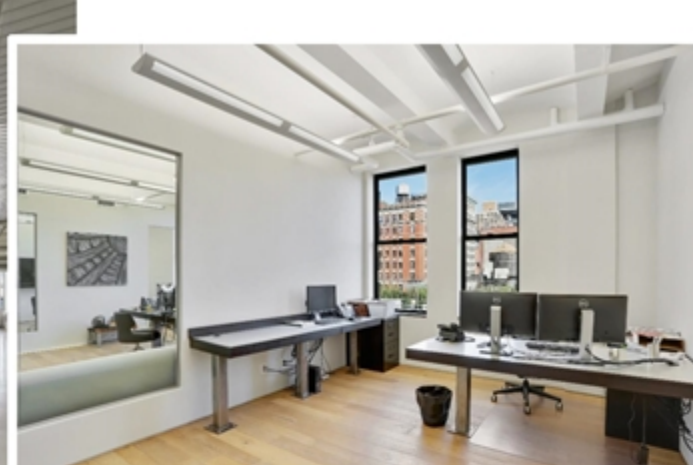
**666 Broadway**

FULL FLOOR IN THE HEART OF NOHO



**666 Broadway**

FULL FLOOR IN THE HEART OF NOHO

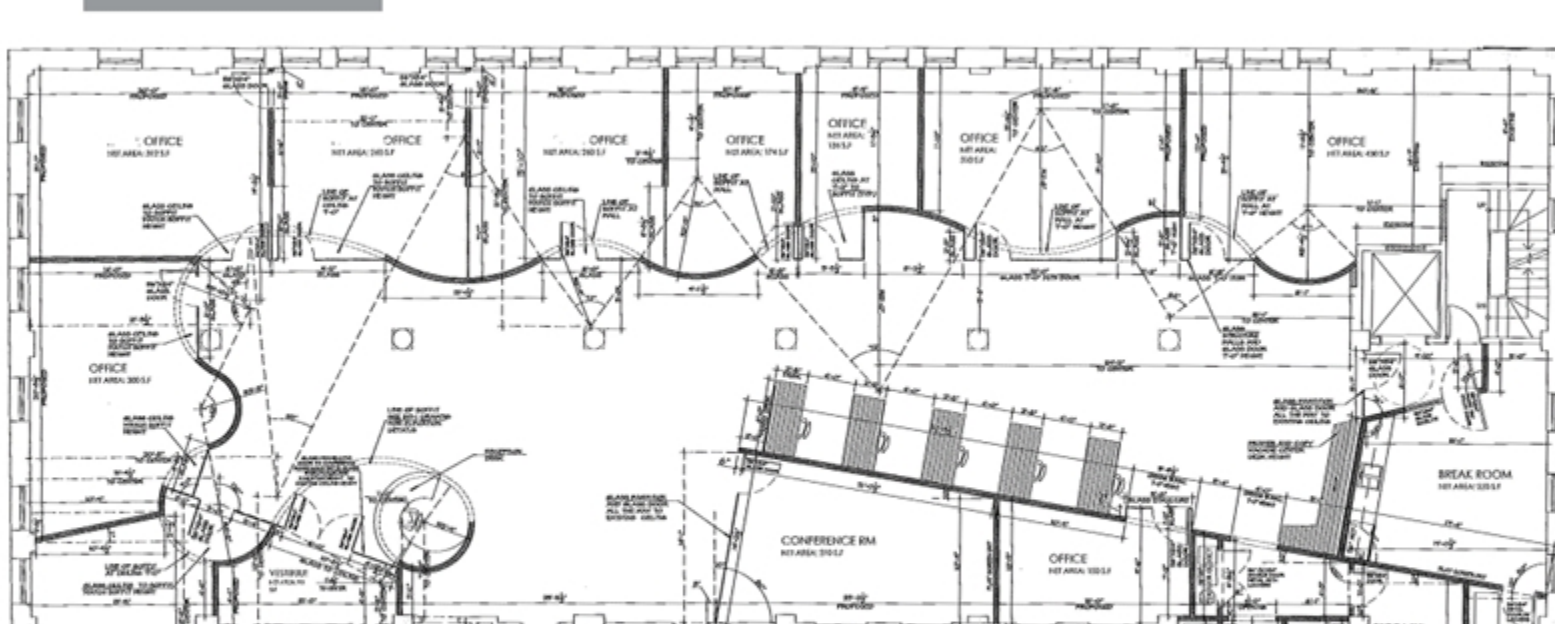


**666 Broadway**

FULL FLOOR IN THE HEART OF NOHO

## FLOOR PLAN

8,000 RSF



**666 Broadway**

FULL FLOOR IN THE HEART OF NOHO

**NEWMARK**

# 666 Broadway

FULL FLOOR IN THE HEART OF NOHO

**Nathan Kropp**  
Associate Director  
212-372-2056  
[Nathan.Kropp@nmrk.com](mailto:Nathan.Kropp@nmrk.com)

**Stephen Gordon**  
Senior Managing Director  
212-372-2375  
[Stephen.Gordon@nmrk.com](mailto:Stephen.Gordon@nmrk.com)

The information contained herein has been obtained from sources deemed reliable but has not been verified and no guarantee, warranty or representation, either express or implied, is made with respect to such information. Terms of sale or lease and availability are subject to change or withdrawal without notice.

**NEWMARK**



[DOWNLOAD BROCHURE](#)

125 Park Avenue, New York, NY 10017 t 212-326-4802

The information contained herein has been obtained from sources deemed reliable but has not been verified and no guarantee, warranty or representation, either express or implied, is made with respect to such information. Terms of sale or lease and availability are subject to change or withdrawal without notice.

©2022 Newmark. All Rights Reserved.