

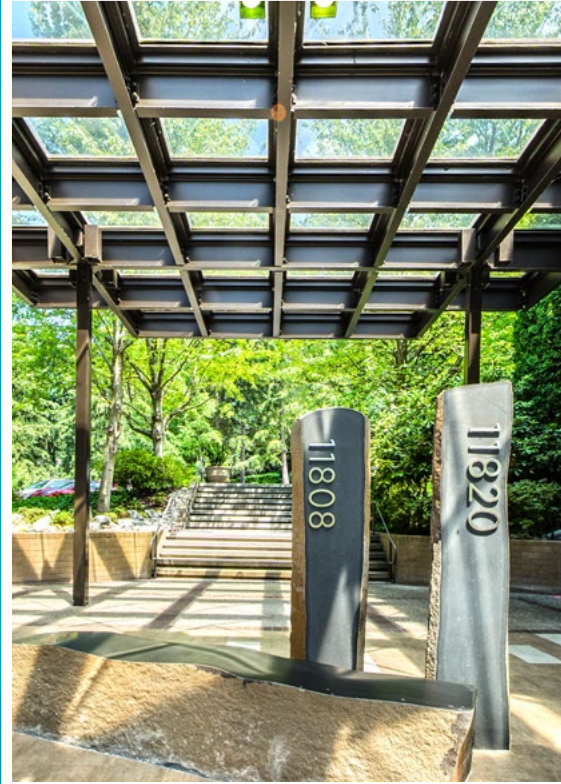
NOW LEASING

# CENTRA OFFICE PARK

11808 - 11820 NORTHUP WAY, BELLEVUE, WA



CentraOfficePark.com



For leasing information contact:

**Mark Flippo**  
425.974.4007  
mark.flippo@am.jll.com



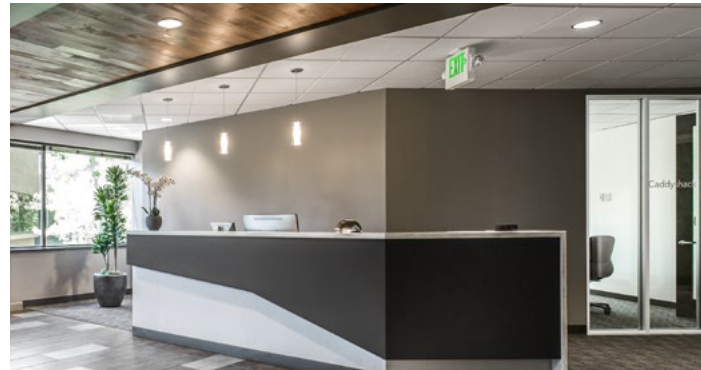
**Riley Shephard**  
425.974.4041  
riley.shephard@am.jll.com

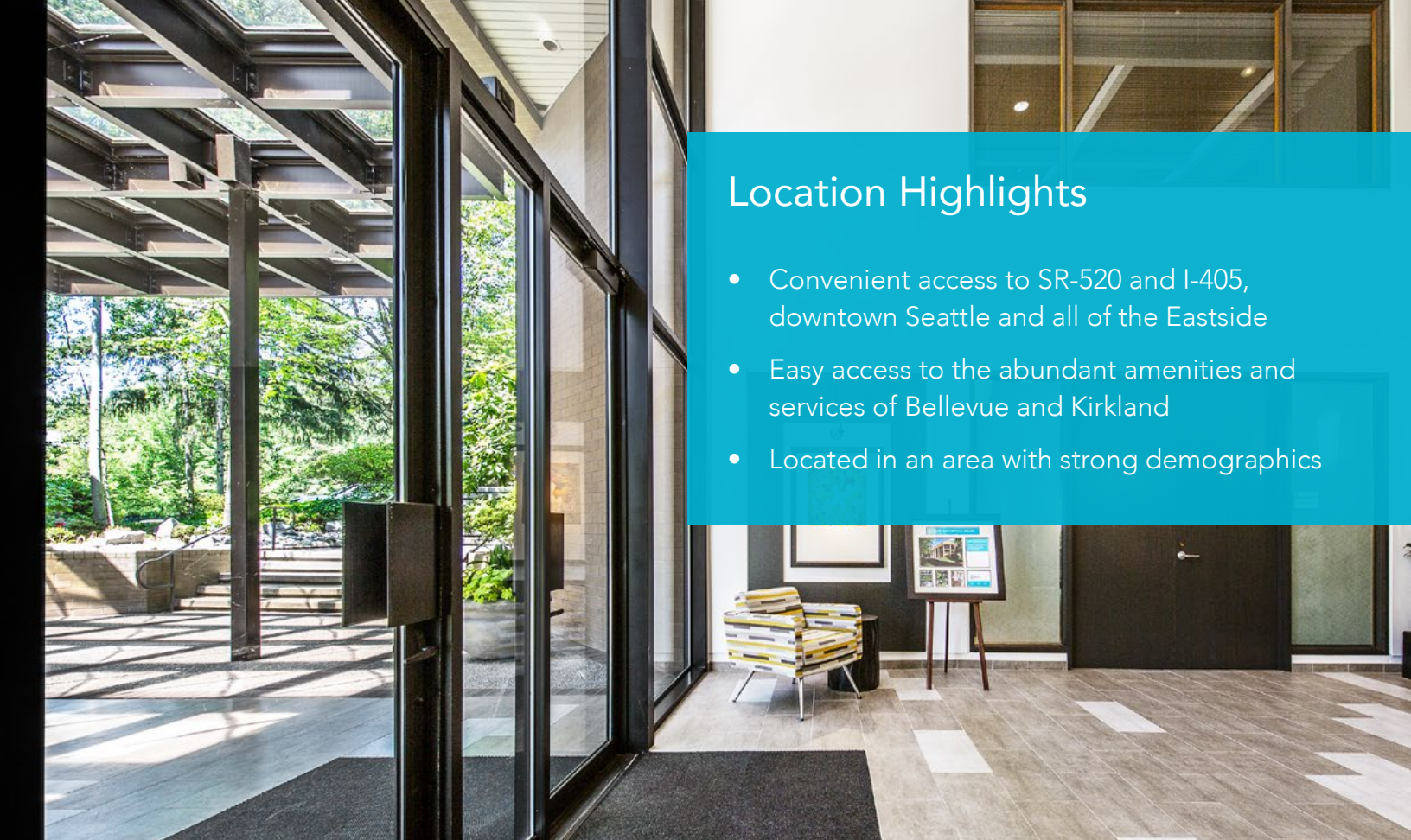




## Property Features

- Two 3-story office buildings with 2-story atrium lobbies
- Covered and surface parking stalls with additional covered stalls available
- Natural wooded setting
- On-site amenities:
  - Avanti Deli-Coffee/grab-n-go
  - Conference Center with AV equipment and WiFi
  - Shower/locker facilities
  - Picnic area
- New improvements to Northup Way including sidewalks, bike lanes and crosswalks









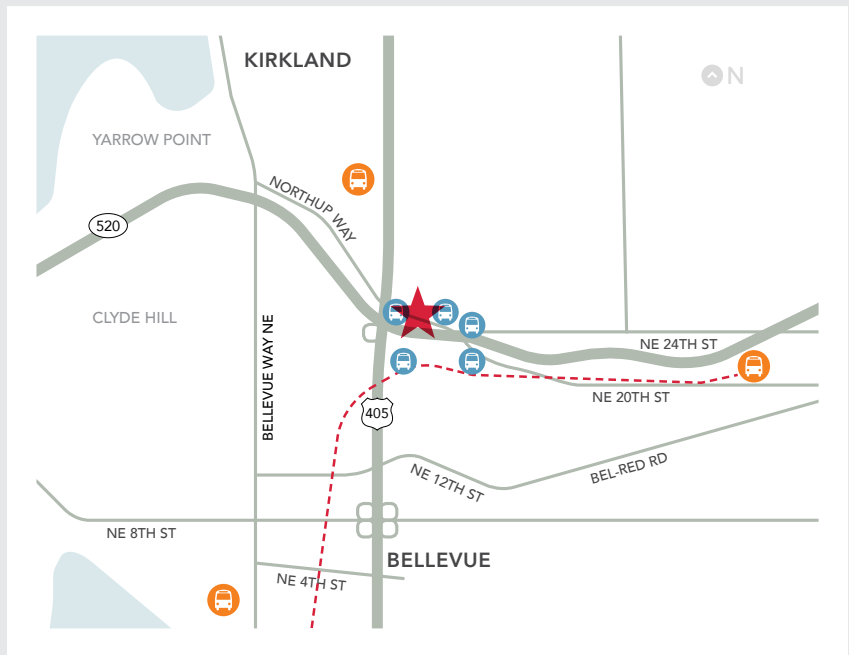
## Location Highlights

- Convenient access to SR-520 and I-405, downtown Seattle and all of the Eastside
- Easy access to the abundant amenities and services of Bellevue and Kirkland
- Located in an area with strong demographics



# Transit Map

-  Centra Office Park
-  King County Metro Transit Centers
-  Bus stops
-  Future Link Light Rail



# Amenities Map



- |                             |                           |
|-----------------------------|---------------------------|
| <b>KIRKLAND</b>             |                           |
| 1 Beach House Bar and Grill |                           |
| 2 Kidd Valley               |                           |
| 3 Caren's Chicago Grill     |                           |
| 4 Starbucks                 |                           |
| 5 Woodmark Hotel            |                           |
| 6 Beach Cafe                |                           |
| <b>NORTHUP CORRIDOR</b>     |                           |
| 7 The Keg                   | 15 Dixie's BBQ            |
| 8 McDonalds                 | 16 Lowe's                 |
| 9 Big Fish Grill            | 17 Bellevue Brewing Co.   |
| 10 La Quinta Hotel          | 18 Kiku Sushi             |
| 11 Burger Master            | 19 Caspian                |
| 12 Subway                   | 20 Amore' Coffee          |
| 13 QFC                      | 21 I Love Teriyaki        |
| 14 Starbucks                |                           |
| <b>BELLEVUE</b>             |                           |
| 22 Wendy's                  | 32 Daniel's Broiler       |
| 23 QFC                      | 33 Hyatt Hotel            |
| 24 Starbucks                | 34 Courtyard By Marriott  |
| 25 PF Changs                | 35 Lunchbox Laboratory    |
| 26 Cheesecake Factory       | 36 John Howie Steak House |
| 27 Red Robin                | 37 Wild Ginger            |
| 28 520 Bar and Grill        | 38 Whole Foods            |
| 29 Palomino's               | 39 Uwajimaya              |
| 30 Westin Hotel             | 40 Home Depot             |
| 31 Maggiano's               |                           |

For leasing information contact:

[CentraOfficePark.com](http://CentraOfficePark.com)

**Mark Flippo**  
425.974.4007  
mark.flippo@am.jll.com



**Riley Shephard**  
425.974.4041  
riley.shephard@am.jll.com



NOW LEASING

# CENTRA OFFICE PARK

11808 - 11820 NORTHUP WAY, BELLEVUE, WA

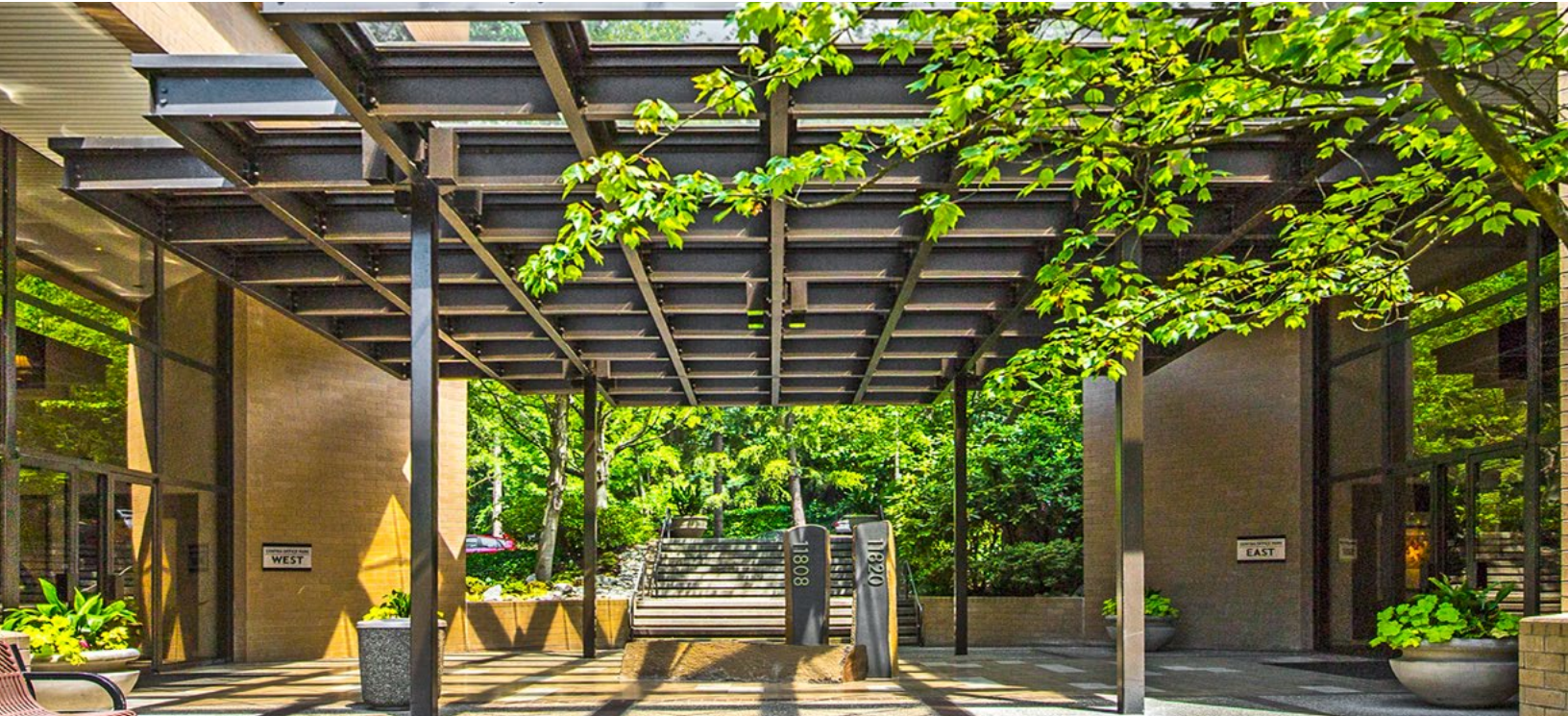
## Current Availabilities

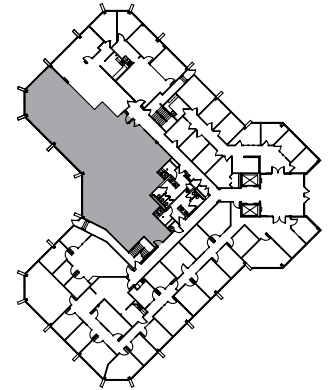
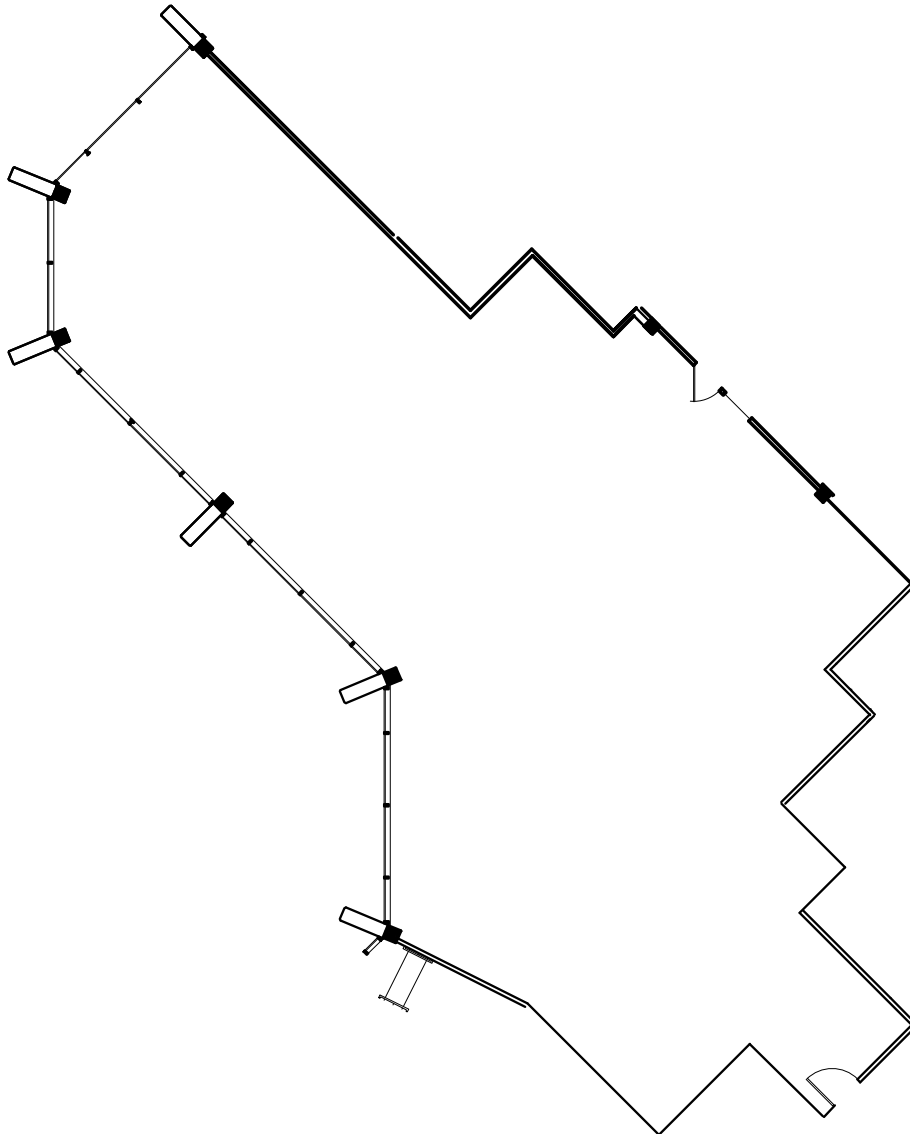
### West Building

Suite 150	3,603 SF	Available Now
Suite 301	1,494 SF	April 2019

### East Building

Suite 100	3,298 SF	Available Now
Suite 200	10,164 SF	December 2018
Suite 310	5,682 SF	Available Now





**Mark Flippo**

425.974.4007

mark.flippo@am.jll.com



**Riley Shephard**

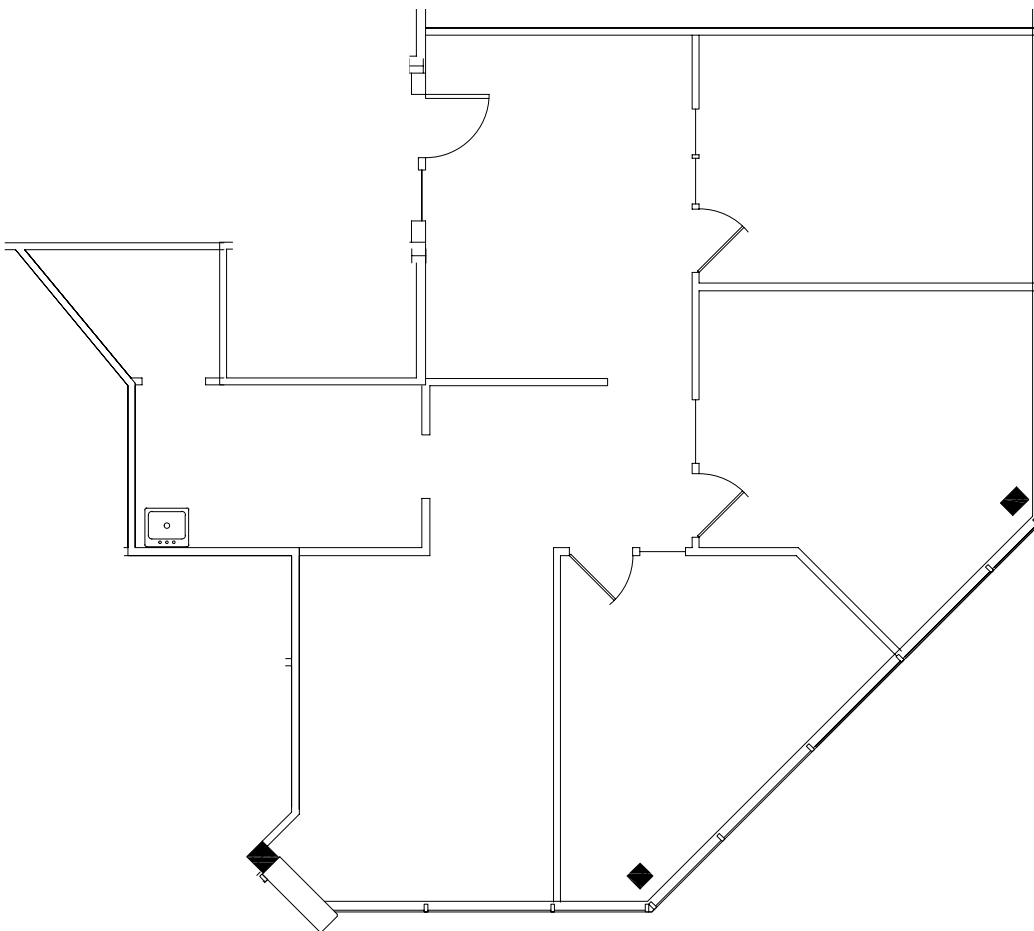
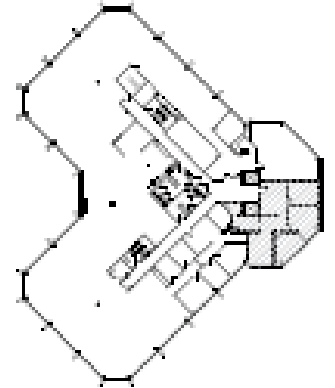
425.974.4041

riley.shephard@am.jll.com

# CENTRA OFFICE PARK

WEST BUILDING

**SUITE 301**  
1,494 RSF



**Mark Flippo**

425.974.4007

mark.flippo@am.jll.com



**Riley Shephard**

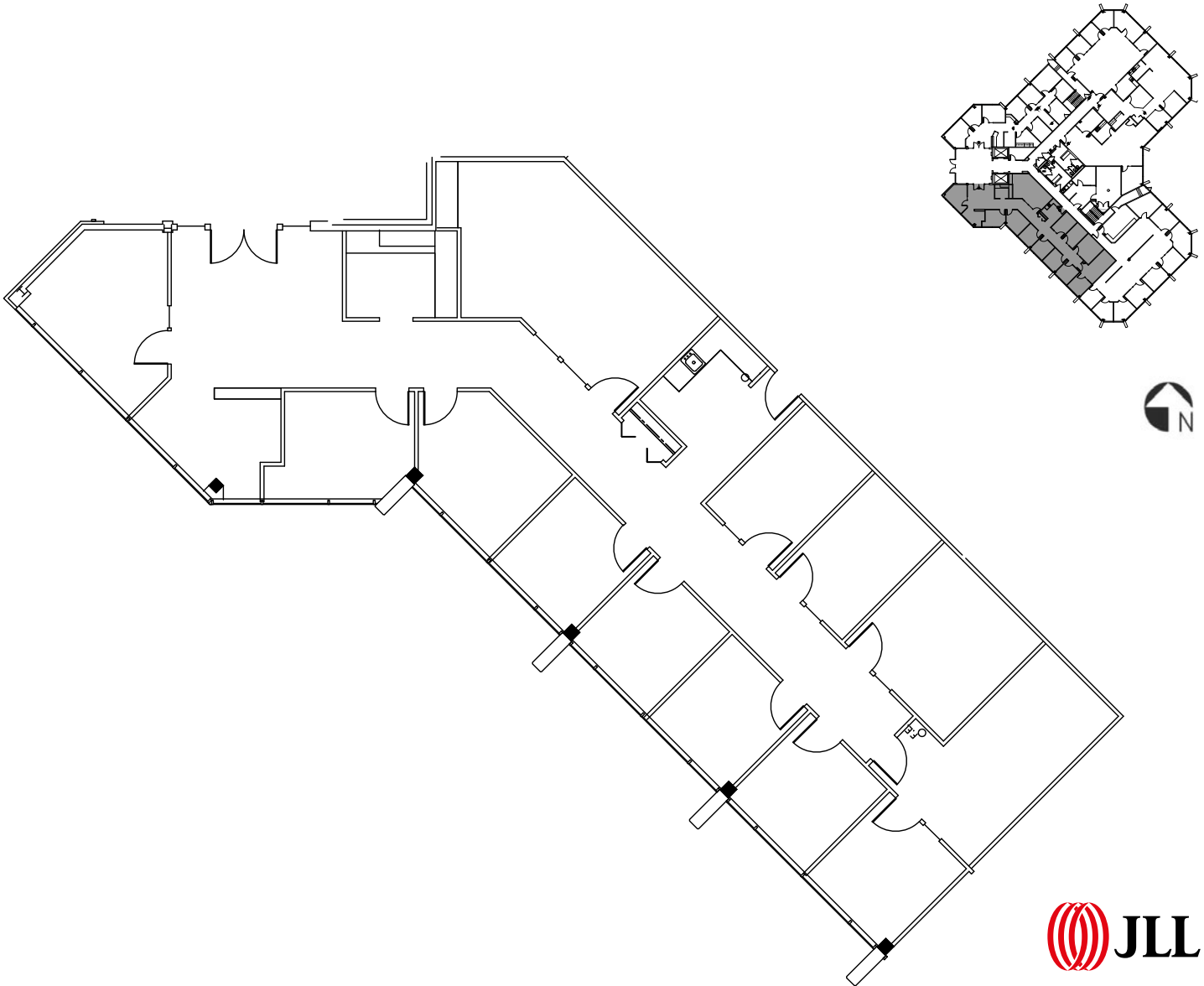
425.974.4041

riley.shephard@am.jll.com

# CENTRA OFFICE PARK

EAST BUILDING

**SUITE 100**  
3,298 RSF



**Mark Flippo**

425.974.4007

mark.flippo@am.jll.com



**Riley Shephard**

425.974.4041

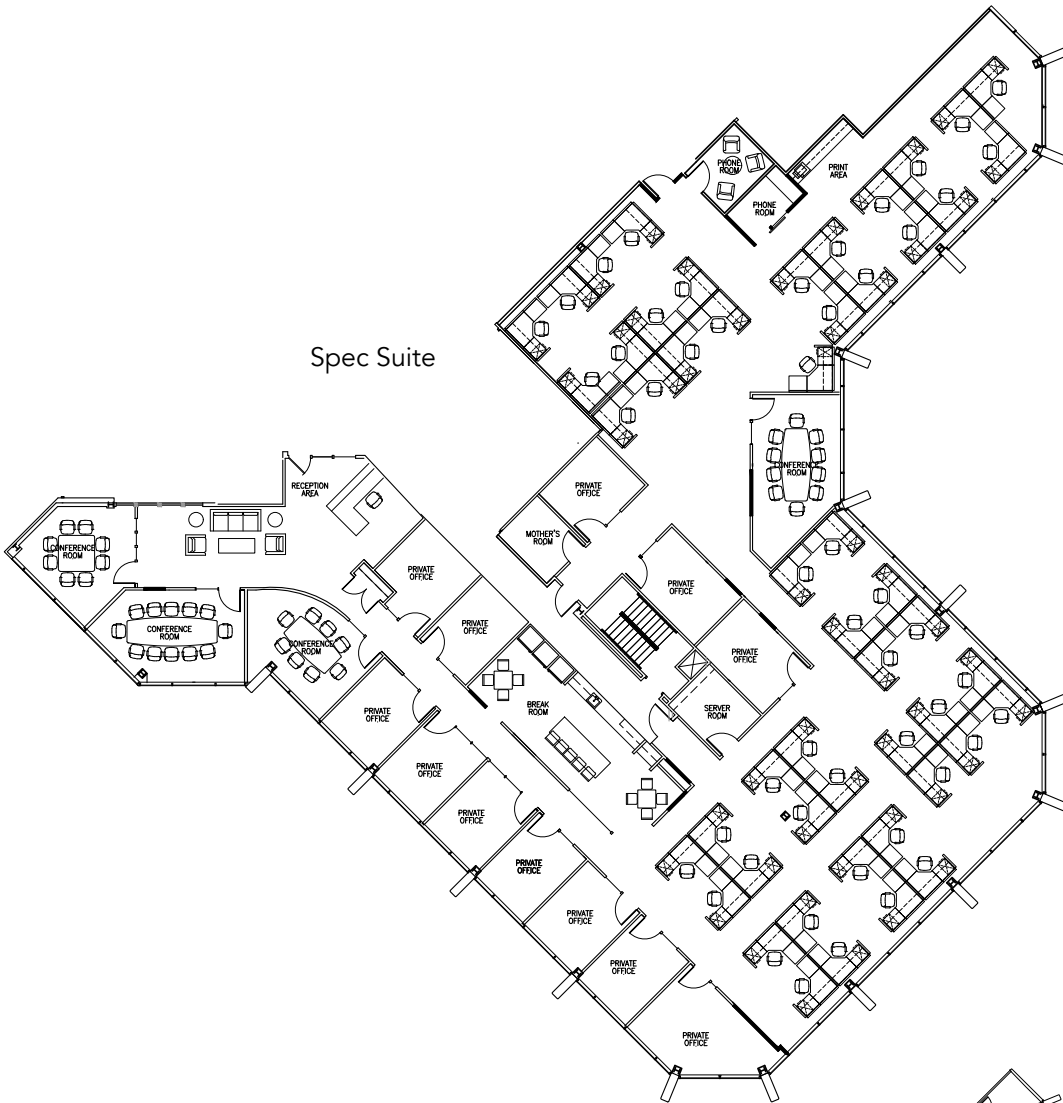
riley.shephard@am.jll.com



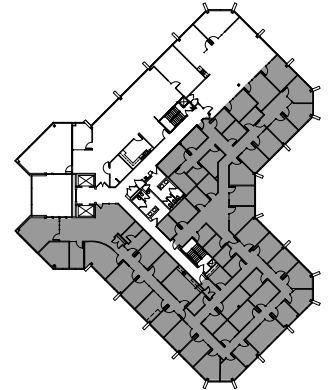
# CENTRA OFFICE PARK

EAST BUILDING

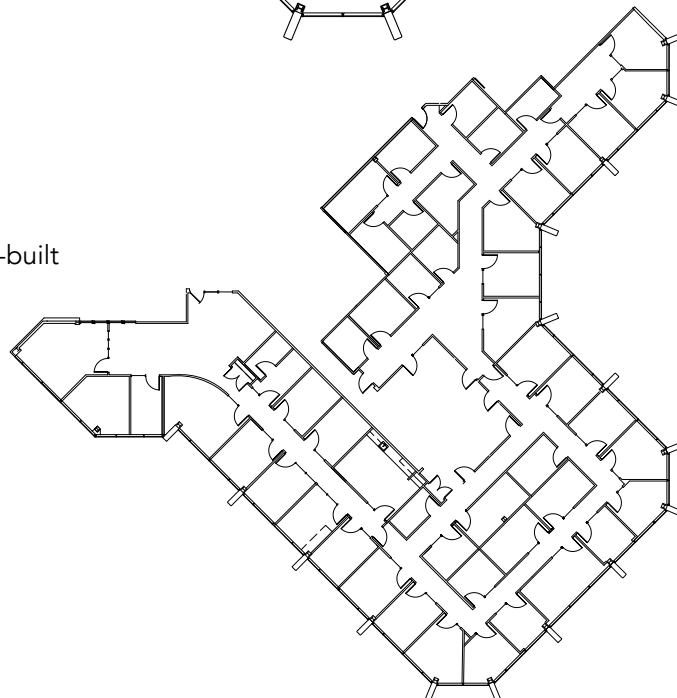
**SUITE 200**  
10,164 RSF



Spec Suite



As-built



**Mark Flippo**

425.974.4007

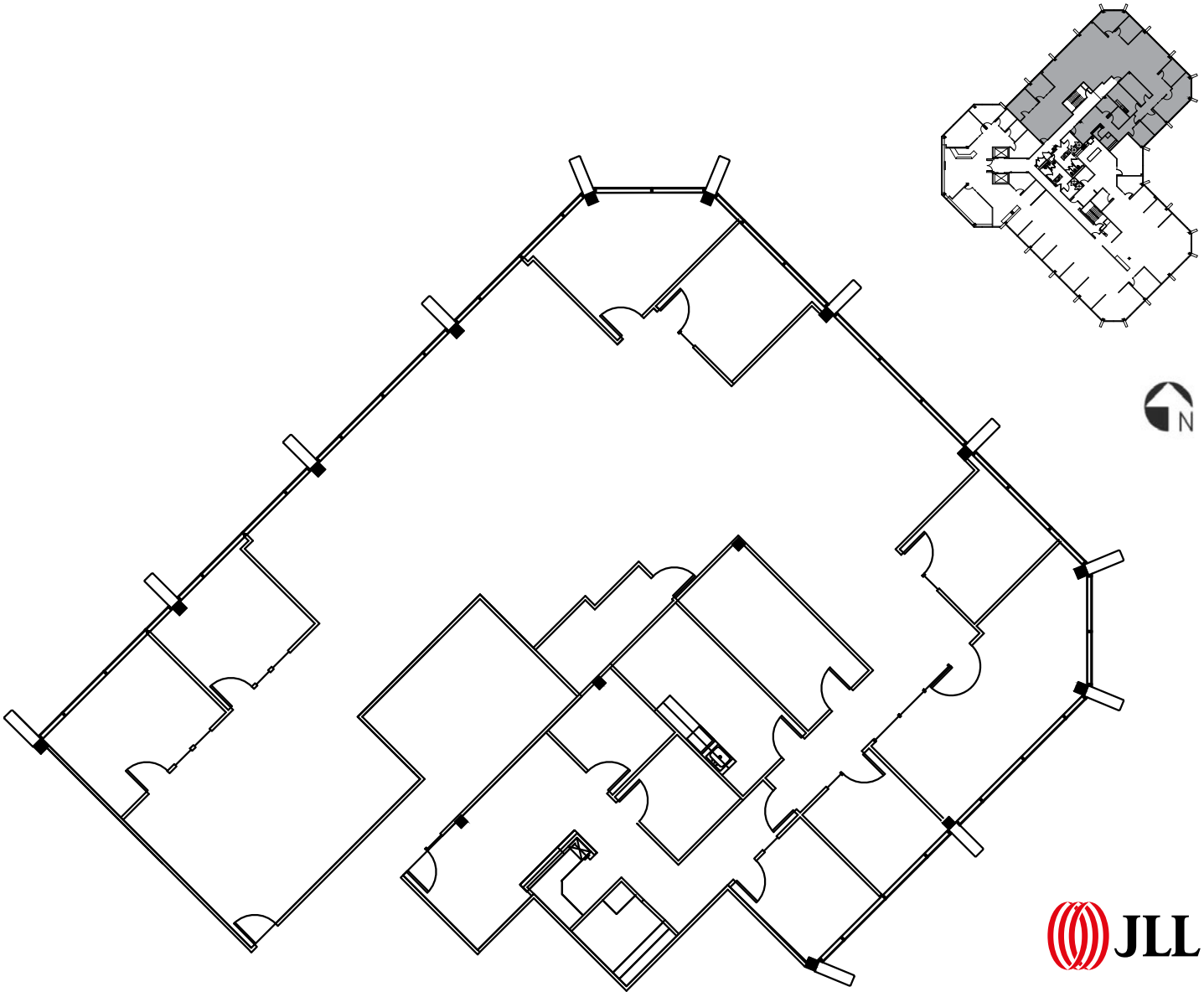
mark.flippo@am.jll.com



**Riley Shephard**

425.974.4041

riley.shephard@am.jll.com



**Mark Flippo**

425.974.4007

mark.flippo@am.jll.com



**Riley Shephard**

425.974.4041

riley.shephard@am.jll.com