

# PROVIDENCE ADVANCED CARE CENTER

5215 TORRANCE BOULEVARD | TORRANCE



## AMENITIES & HIGHLIGHTS

- **Description**  
State-of-the-art Medical Office Building completed in 2018
- Located in Central Torrance close to the Beach Cities
- **Anchor Tenants Include -**  
Providence Healthcare and City of Hope
- **Parking**  
Ample parking spaces in newly-constructed parking structure
- **Amenities**  
Restaurants, banks and shops – all within a few blocks



## FOR LEASING INFORMATION, CONTACT:

**MARK MATTIS**

310.215.8500

mark.mattis@madisonmarquette.com

CA RE License #00934378



**MadisonMarquette**

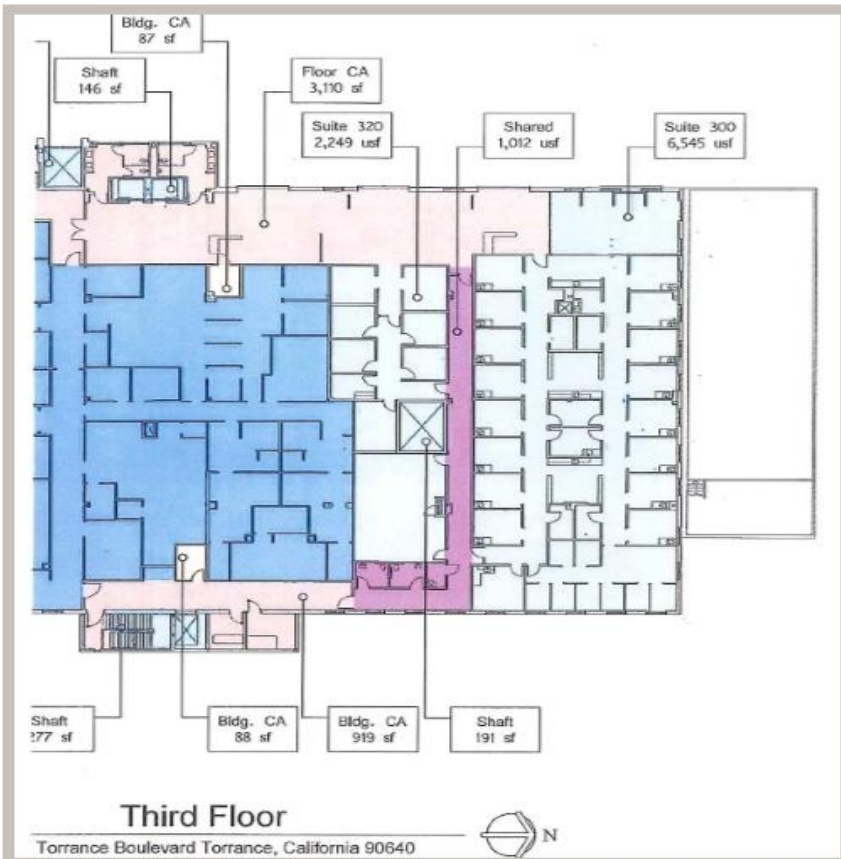
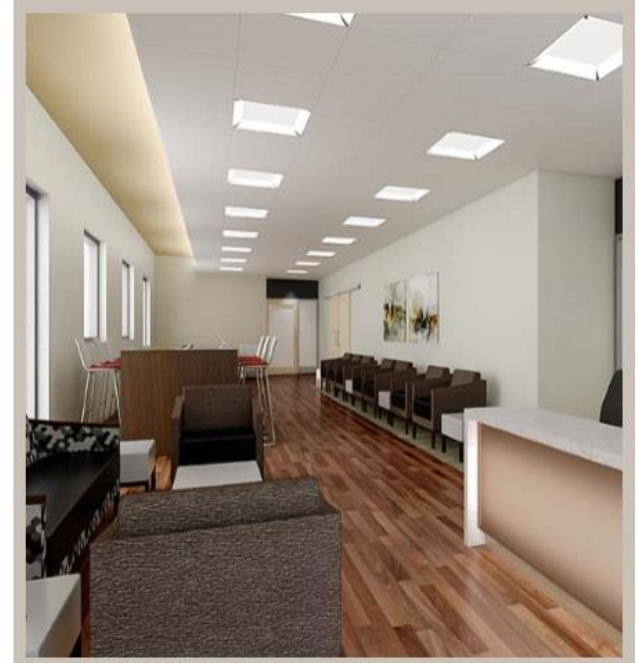
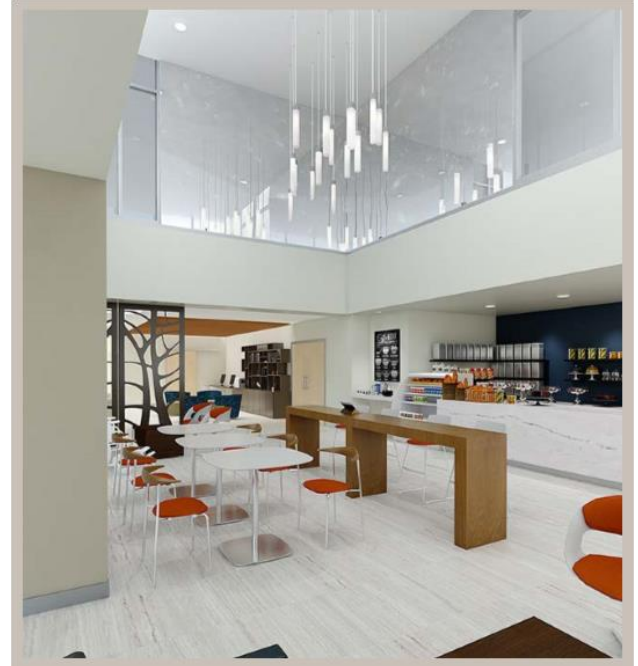
A Capital Guidance Company

# PROVIDENCE ADVANCED CARE CENTER

5215 TORRANCE BOULEVARD | TORRANCE

AVAILABLE SPACE NOVEMBER | DECEMBER 2019

SUITE	SQ. FT.	COMMENTS
200	2,519	1 <sup>st</sup> Generation
300	2,000 - 10,507	Highly improved medical space with multiple exam rooms, labs, consults, and beautifully-appointed reception area



FOR LEASING INFORMATION, CONTACT:

**MARK MATTIS**

310.215.8500

mark.mattis@madisonmarquette.com

CA RE License #00934378