



Commencement Bay Medical Building

3716 Pacific Avenue South, Tacoma, WA 98418

Commencement Bay Medical Building is centrally located just off 38th Street in Tacoma, with easy access to both State Route 7 and Interstate 5. The building offers lighted parking in the lot fronting Pacific Ave, as well as in the lot behind the building. Available spaces are Suite C of 952 SF and Suite G of 1,200 SF. Suite C has three exam rooms, 1 potential exam room, 1 private office and a receptionist's office. Suite G has an open space plan with 1 office, a break area, a waiting room, a receptionist's office and the potential to construct 3 private exam rooms.

Overview

- Excellent, Central Location
- Pierce County Health Dept. across the street
- Ample, Lighted Parking
- Suite C of 952 SF has 3 exam rooms, 1 potential exam room, 1 private office, and receptionist's office
- Suite G of 1,200 SF has an open space plan with 1 office, break area, waiting room, receptionist's office, and potential for 3 exam rooms
- Rate: \$20.00/sf/yr modified gross
- Tenant pays power separately

DISCLAIMER: The above information has been secured from sources believed to be reliable, however, no representations are made to its accuracy. Prospective tenants or buyers should consult their professional advisors and conduct their own independent investigation. Properties are subject to change in price and/or availability without notice.



11120 Gravelly Lake Dr SW Ste 2
Lakewood, Washington 98499
johnson-commercial.com

Tim Johnson
timothy@johnson-commercial.com
(253) 209-9999

Margot Johnson
margot@johnson-commercial.com
(253) 209-9998



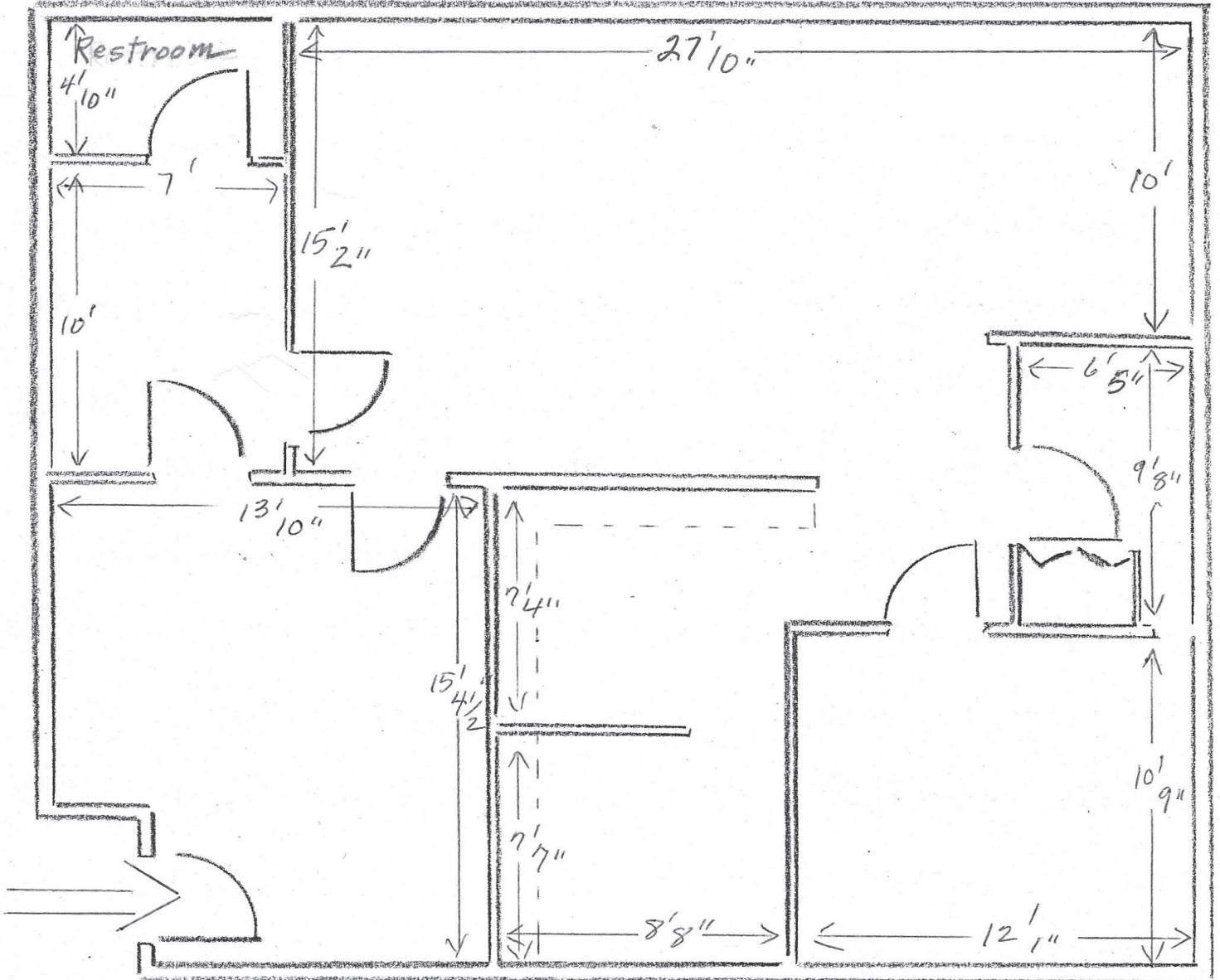
11120 Gravelly Lake Dr SW Ste 2
Lakewood, Washington 98499
johnson-commercial.com

Tim Johnson
timothy@johnson-commercial.com
(253) 209-9999

Margot Johnson
margot@johnson-commercial.com
(253) 209-9998



FLOOR PLAN Suite G



11120 Gravelly Lake Dr SW Ste 2
Lakewood, Washington 98499
johnson-commercial.com

Tim Johnson

timothy@johnson-commercial.com
(253) 209-9999

Margot Johnson

margot@johnson-commercial.com
(253) 209-9998



AREA MAP



11120 Gravelly Lake Dr SW Ste 2
Lakewood, Washington 98499
johnson-commercial.com

Tim Johnson
timothy@johnson-commercial.com
(253) 209-9999

Margot Johnson
margot@johnson-commercial.com
(253) 209-9998