

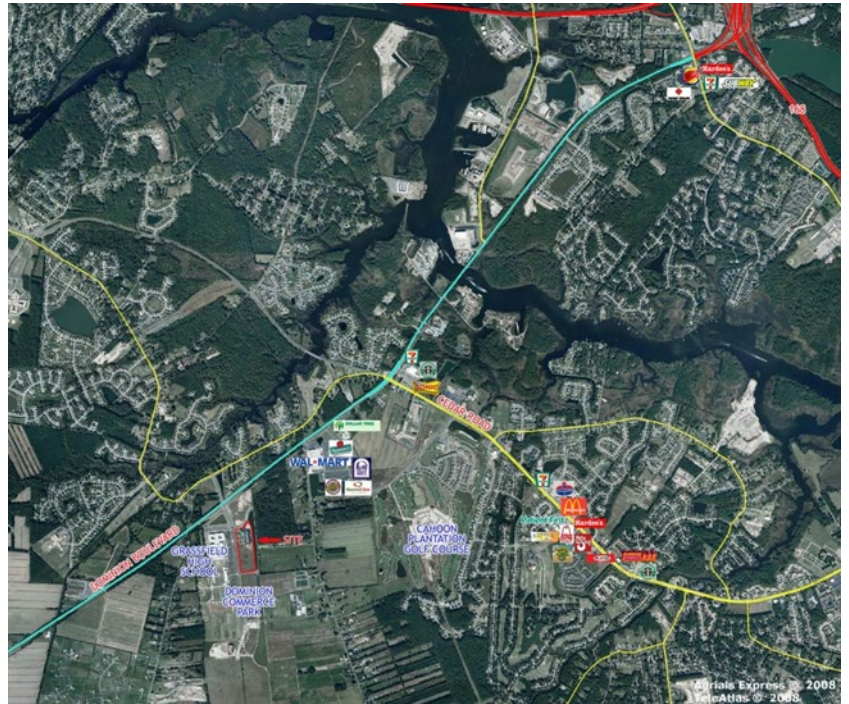
CLASS A OFFICE FOR LEASE Dominion Business Center

1001 Scenic Parkway, Chesapeake, VA



Property Features

- New construction - Available January 2020:
 - Suite 202: +/-1,822 RSF
- Build to Suit Availability:
 - Suite 204: +/-3,517 RSF
- \$19.50 net of janitorial
- Amenities:
 - Class A finishes in common area
 - Adjacent to Grassfield High School and just south of Dominion Shopping Center (Walmart), Chesapeake Civic Center, physicians and retail opportunities nearby on Cedar Road
 - Abundant and well-maintained landscaping
 - Directly off of the new Route 17
 - Only 4 miles from I-64 / I-464
- Join Sentara, Edward Jones, Hearndon Construction

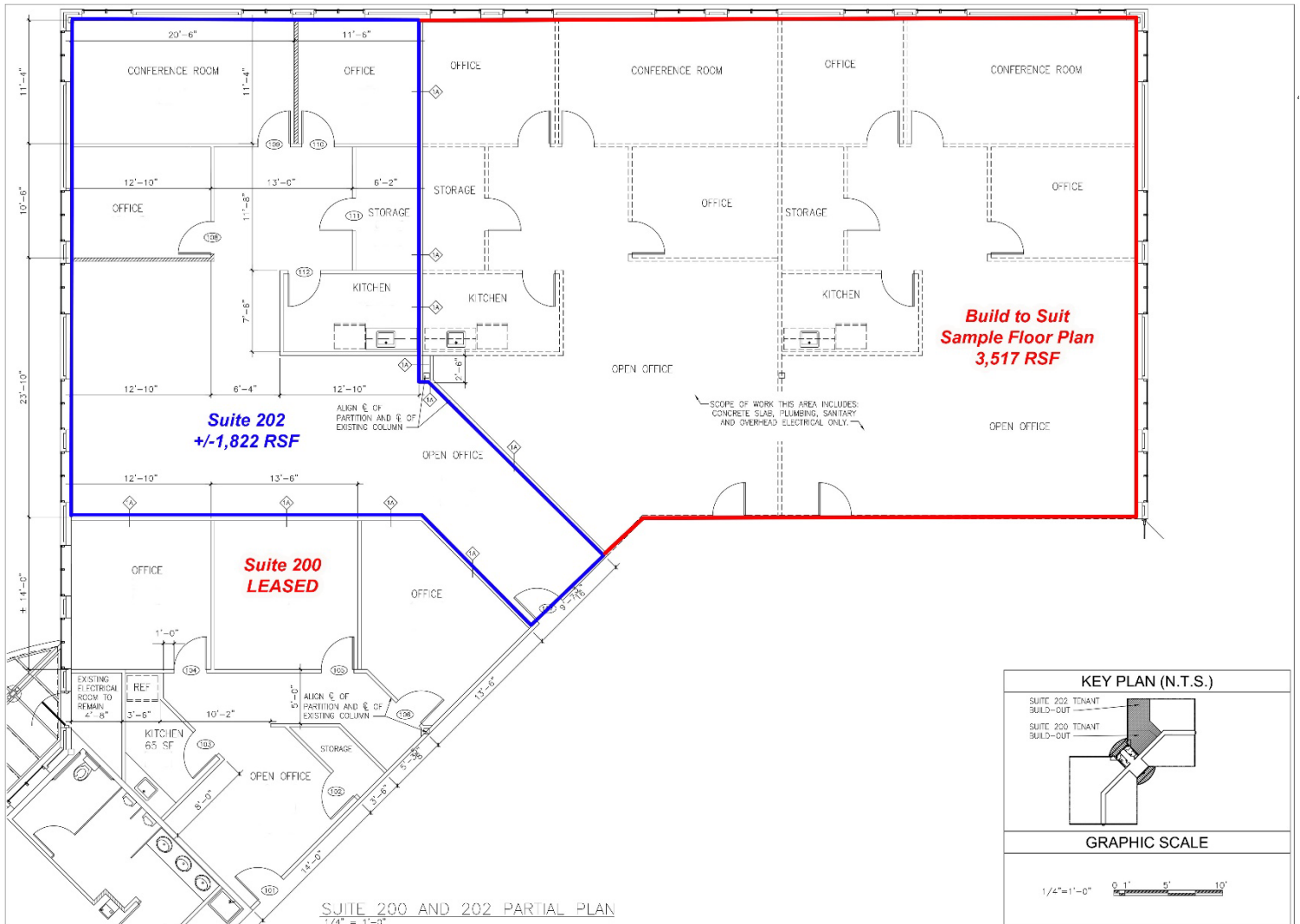


For more information, contact:

CHRISTINE KAEMPFE, CCIM
Vice President
757 499 1384
christine.kaempfe@thalhimer.com

TONY WEISS
Vice President
757 213 4148
tony.weiss@thalhimer.com

The Town Center of Virginia Beach
222 Central Park Ave., Suite 1820
Virginia Beach, VA 23462
www.thalhimer.com



For more information, contact:

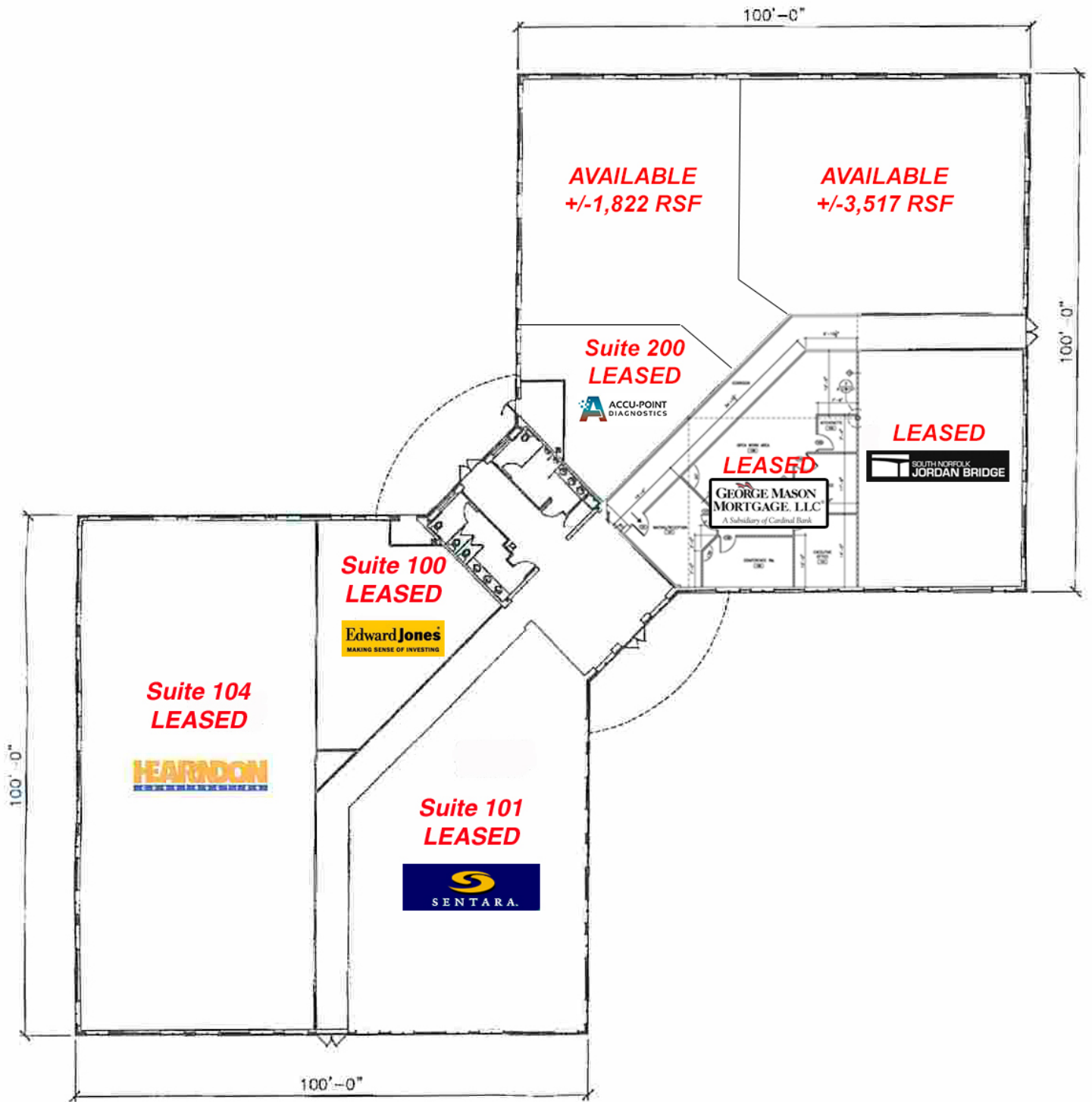
CHRISTINE KAEMPFE, CCIM
 Vice President
 757 499 1384
christine.kaempfe@thalhimer.com

TONY WEISS
 Vice President
 757 213 4148
tony.weiss@thalhimer.com

The Town Center of Virginia Beach
 222 Central Park Ave., Suite 1820
 Virginia Beach, VA 23462
www.thalhimer.com

CLASS A OFFICE FOR LEASE Dominion Business Center

1001 Scenic Parkway, Chesapeake, VA

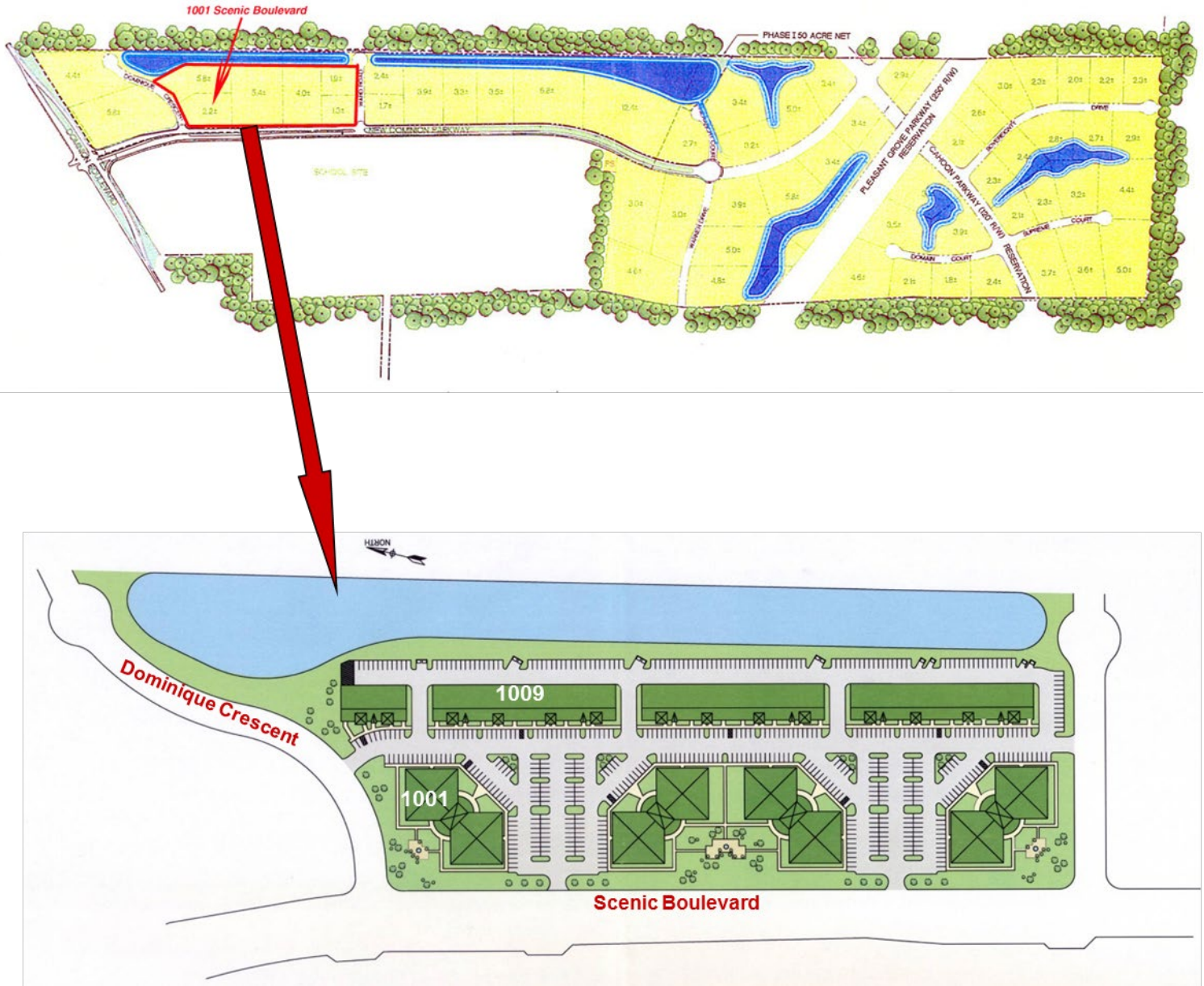


For more information, contact:

CHRISTINE KAEMPFE, CCIM
Vice President
757 499 1384
christine.kaempfe@thalhimer.com

TONY WEISS
Vice President
757 213 4148
tony.weiss@thalhimer.com

The Town Center of Virginia Beach
222 Central Park Ave., Suite 1820
Virginia Beach, VA 23462
www.thalhimer.com



For more information, contact:

CHRISTINE KAEMPFE, CCIM
Vice President
757 499 1384
christine.kaempfe@thalhimer.com

TONY WEISS
Vice President
757 213 4148
tony.weiss@thalhimer.com

The Town Center of Virginia Beach
222 Central Park Ave., Suite 1820
Virginia Beach, VA 23462
www.thalhimer.com