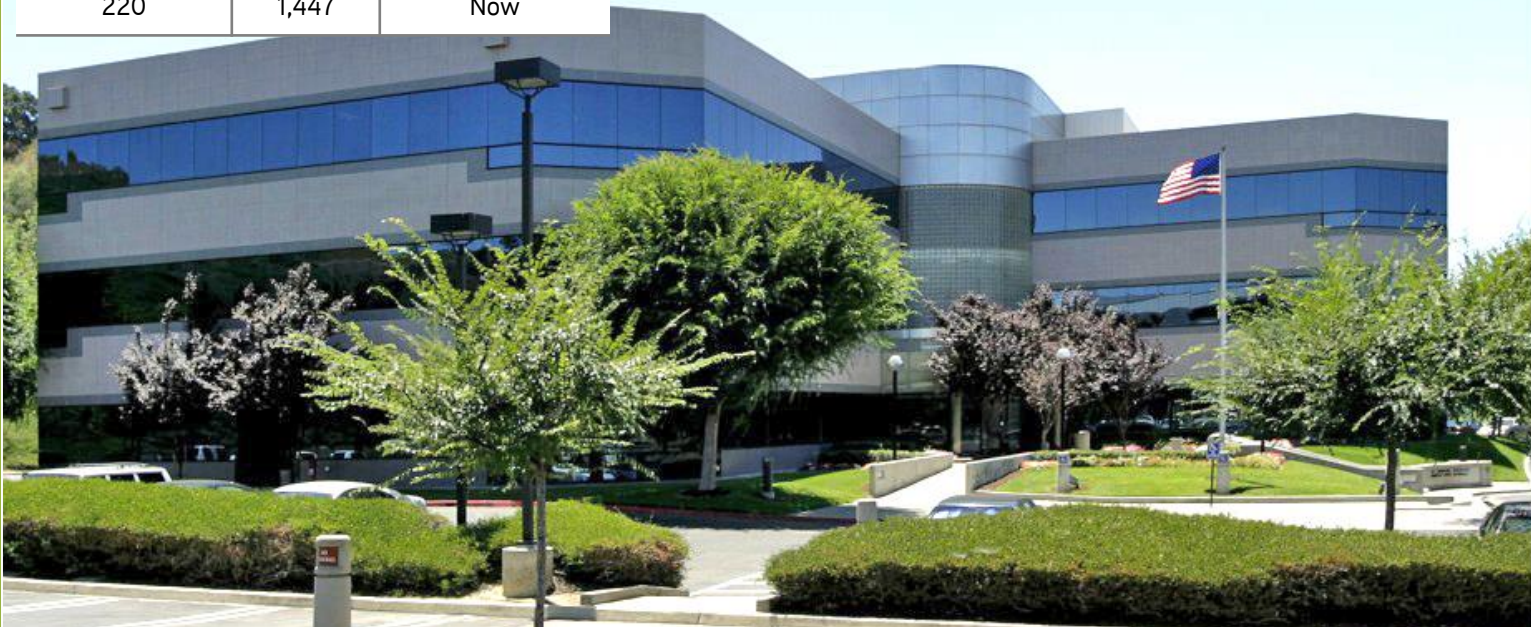


21660 E. COPLEY DRIVE

Diamond Bar, California

LEASE OPPORTUNITY

SUITE	RSF	AVAILABILITY
170	1,901	Now
220	1,447	Now

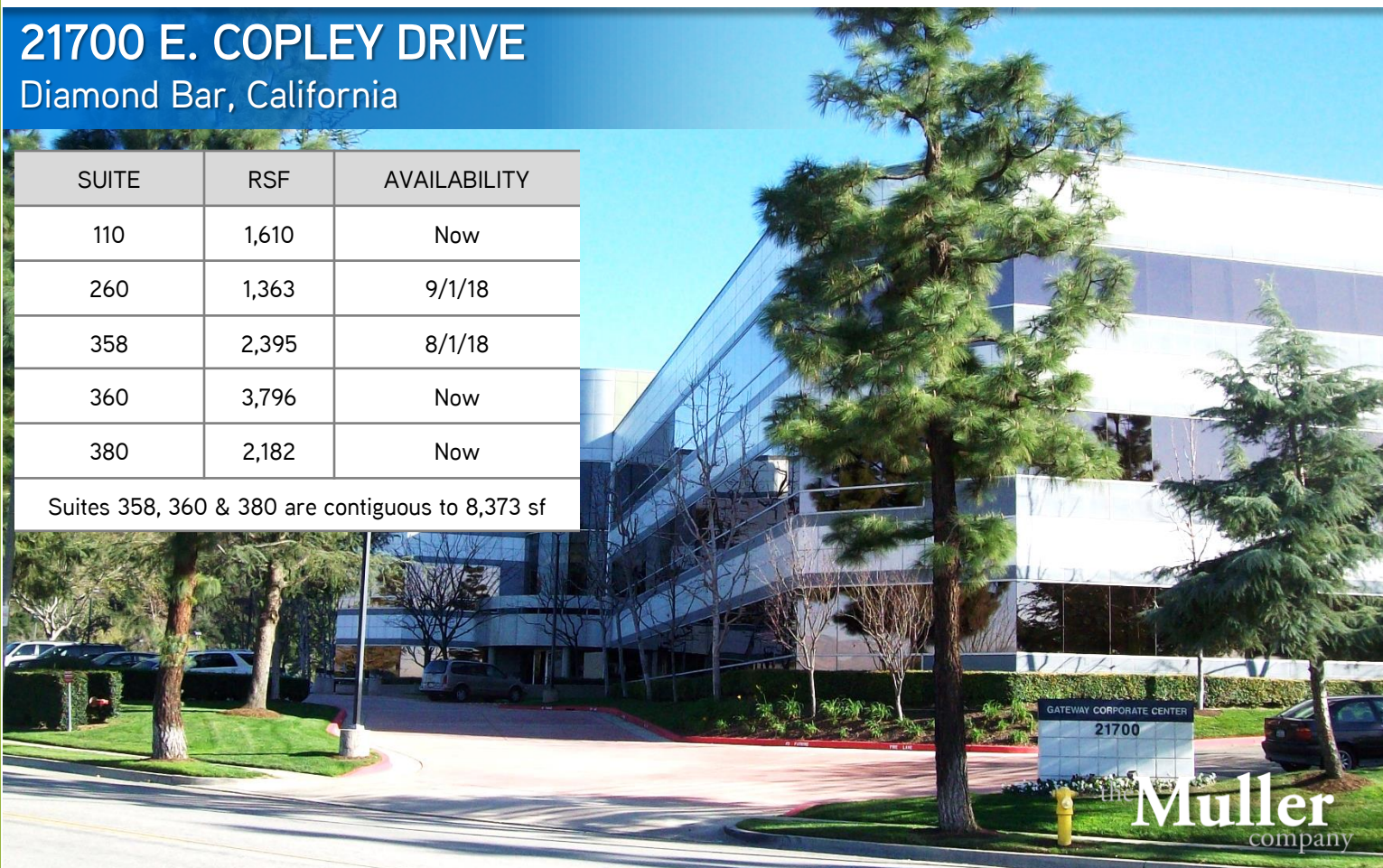


21700 E. COPLEY DRIVE

Diamond Bar, California

SUITE	RSF	AVAILABILITY
110	1,610	Now
260	1,363	9/1/18
358	2,395	8/1/18
360	3,796	Now
380	2,182	Now

Suites 358, 360 & 380 are contiguous to 8,373 sf



For leasing information,
please contact:

SEAN KERN | 909.942.4691
Senior Director
sean.kern@cushwake.com
Lic. # 01377294

RYAN RUSSELL | 909.942.4697
Director
ryan.russell@cushwake.com
Lic. #01505274



21660 & 21700 E. COPLEY DRIVE

Diamond Bar, California



FEATURES & AMENITIES:

- Lease Rate: \$2.70 FSG
- Parking 4:1000
- 3-story building located in a master-planned, 255-acre business park designed for corporate headquarters
- Dramatic Presence
- Lush Landscaping
- Centrally Located – Gateway to four counties
- Located Minutes from the 10, 57, 71 & 60 Freeways
- Close to Ontario International Airport, hotels, restaurants, business services and retail



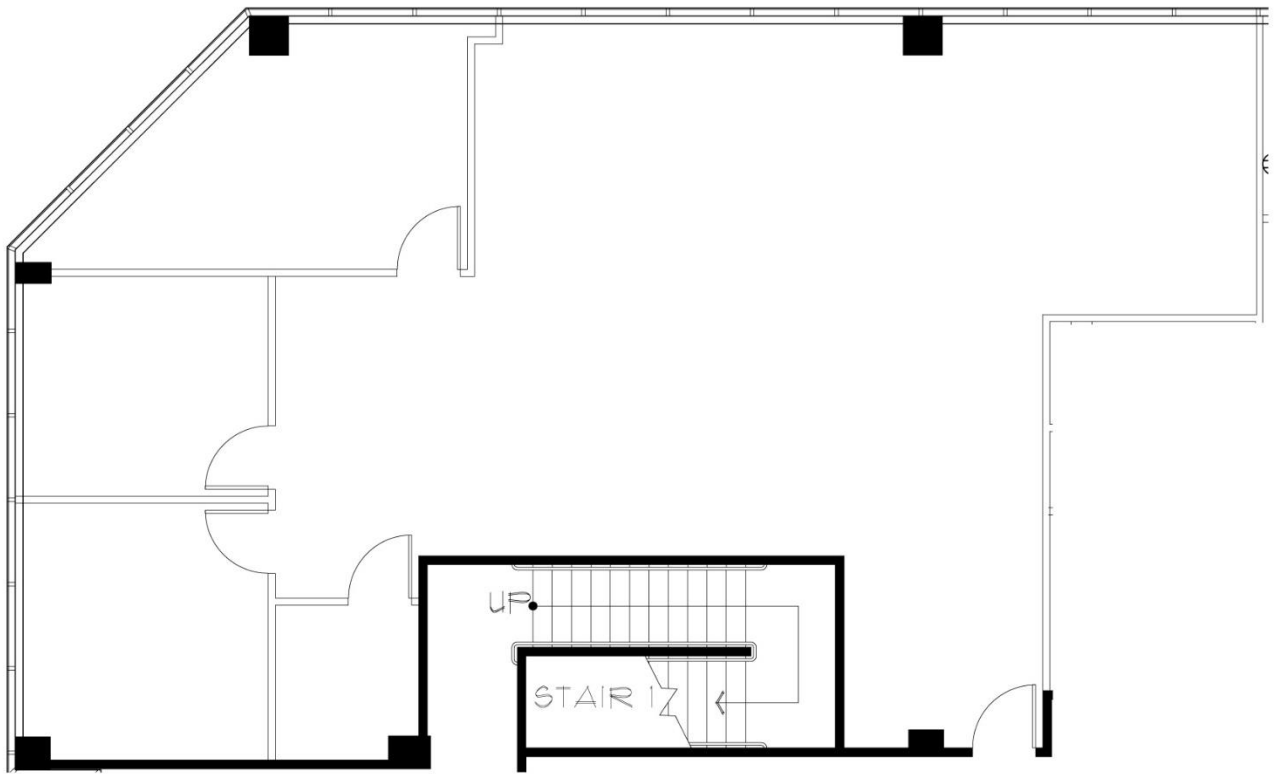


21660 E. COPLEY DRIVE
Diamond Bar, California

SUITE 170

1,901

GATEWAY CORPORATE CENTER



For leasing information,
please contact:

SEAN KERN | 909.942.4691
Senior Director
sean.kern@cushwake.com
Lic. # 01377294

RYAN RUSSELL | 909.942.4697
Director
ryan.russell@cushwake.com
Lic. #01505274





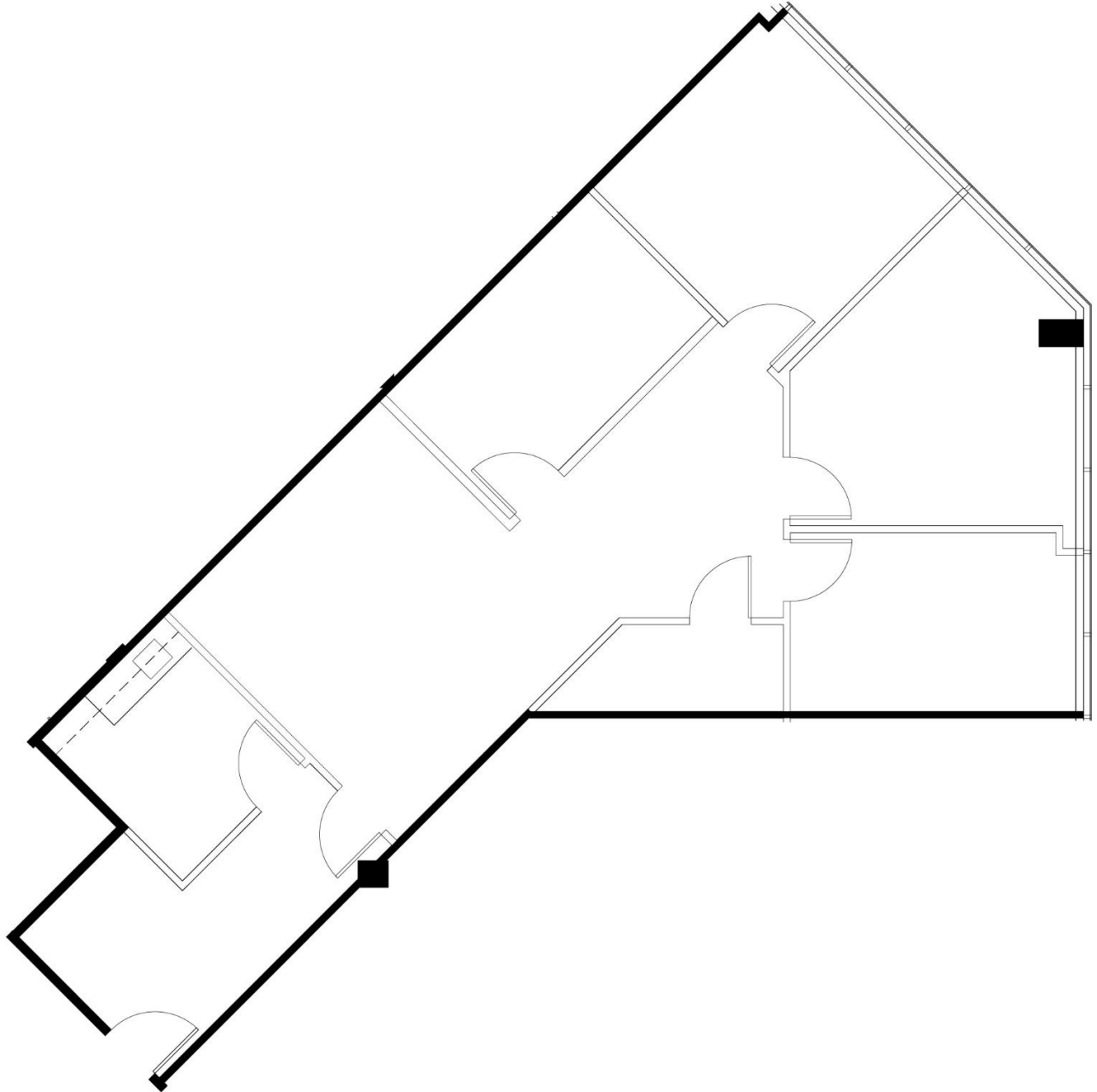
21660 E. COPLEY DRIVE

Diamond Bar, California

SUITE 220

1,447

GATEWAY CORPORATE CENTER



For leasing information,
please contact:

SEAN KERN | 909.942.4691
Senior Director
sean.kern@cushwake.com
Lic. # 01377294

RYAN RUSSELL | 909.942.4697
Director
ryan.russell@cushwake.com
Lic. #01505274





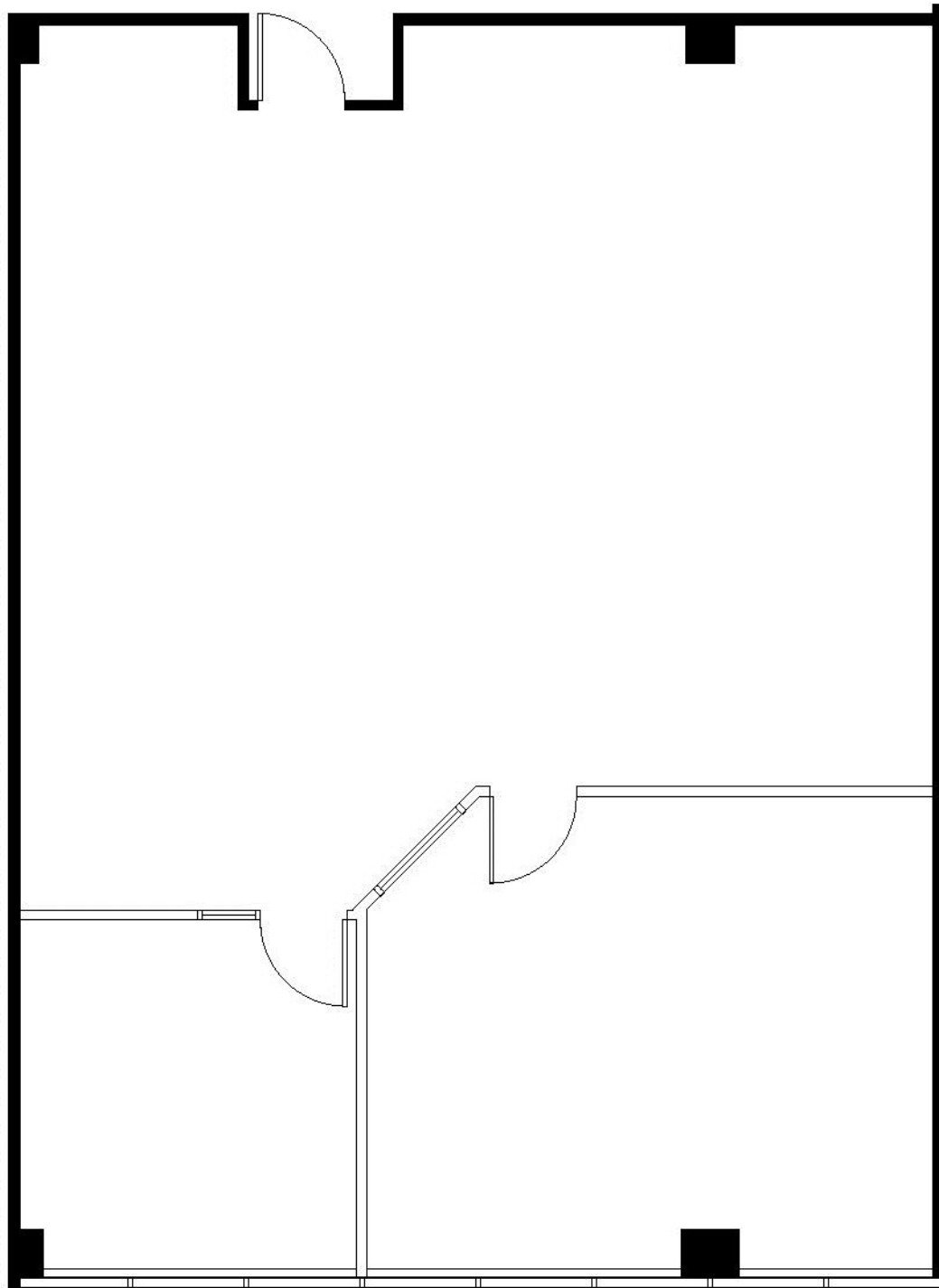
21700 E. COPLEY DRIVE

Diamond Bar, California

SUITE 110

1,610 RSF

GATEWAY CORPORATE CENTER



For leasing information,
please contact:

SEAN KERN | 909.942.4691
Senior Director
sean.kern@cushwake.com
Lic. # 01377294

RYAN RUSSELL | 909.942.4697
Director
ryan.russell@cushwake.com
Lic. #01505274





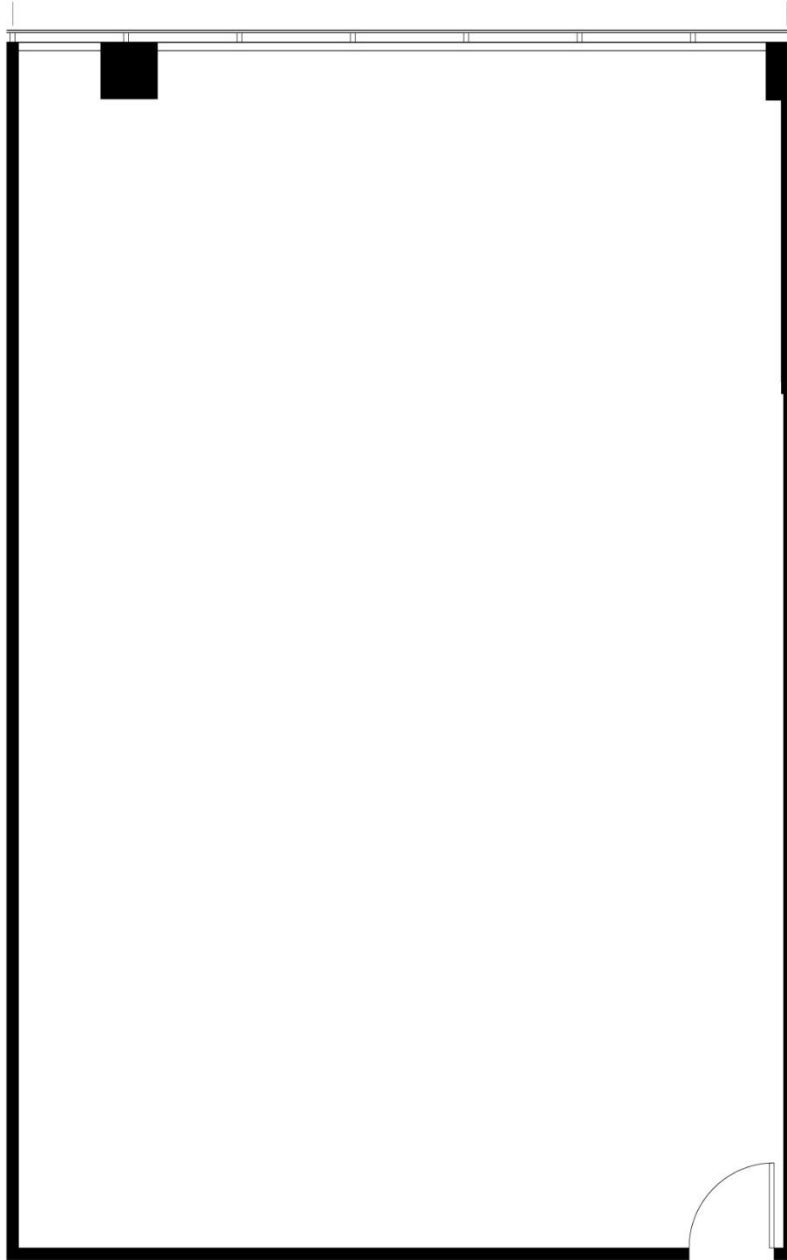
21700 E. COPLEY DRIVE

Diamond Bar, California

SUITE 260

1,363 RSF

GATEWAY CORPORATE CENTER



For leasing information,
please contact:

SEAN KERN | 909.942.4691
Senior Director
sean.kern@cushwake.com
Lic. # 01377294

RYAN RUSSELL | 909.942.4697
Director
ryan.russell@cushwake.com
Lic. #01505274





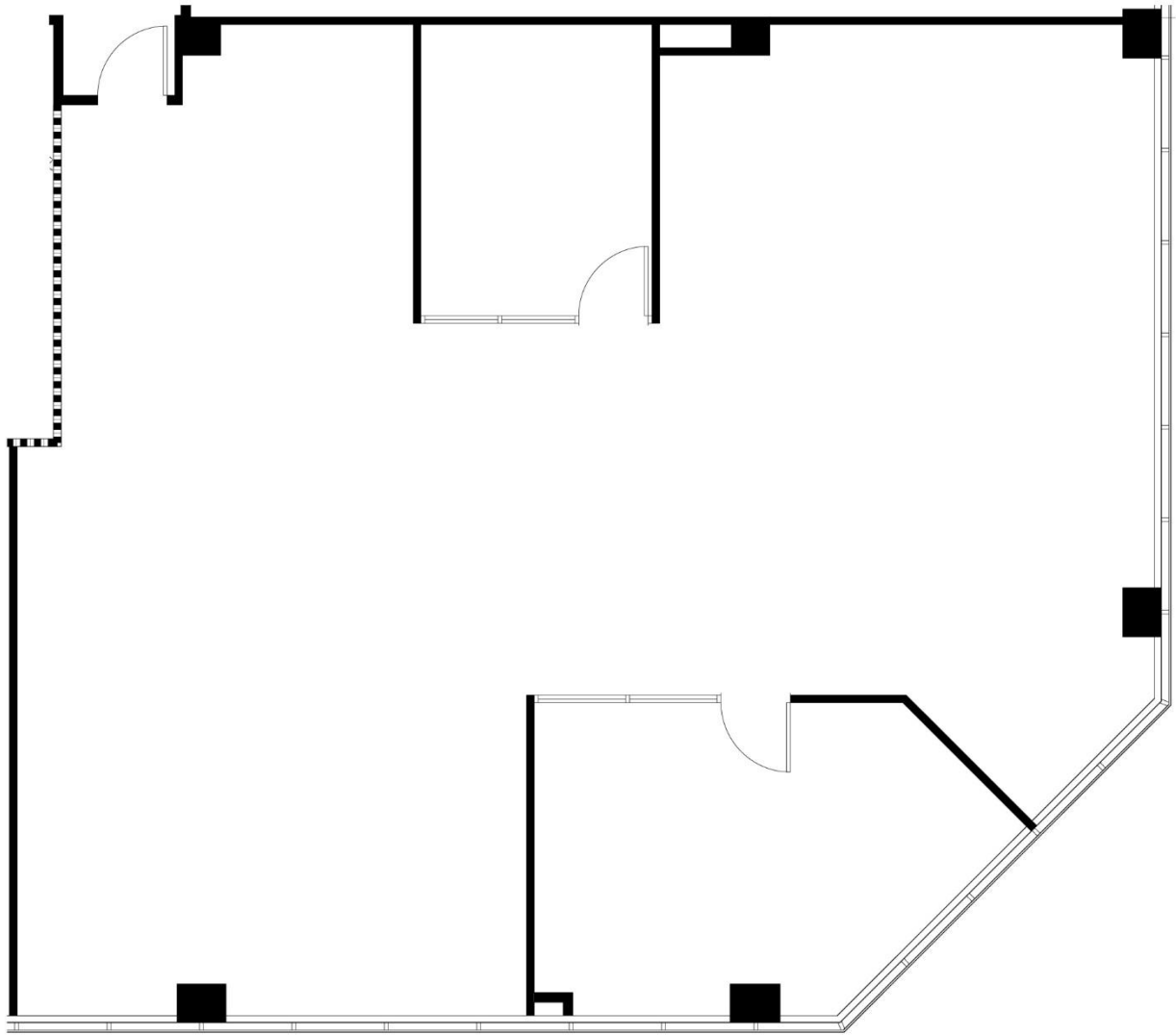
21700 E. COPLEY DRIVE

Diamond Bar, California

SUITE 358

2,395 RSF

GATEWAY CORPORATE CENTER



For leasing information,
please contact:

SEAN KERN | 909.942.4691
Senior Director
sean.kern@cushwake.com
Lic. # 01377294

RYAN RUSSELL | 909.942.4697
Director
ryan.russell@cushwake.com
Lic. #01505274





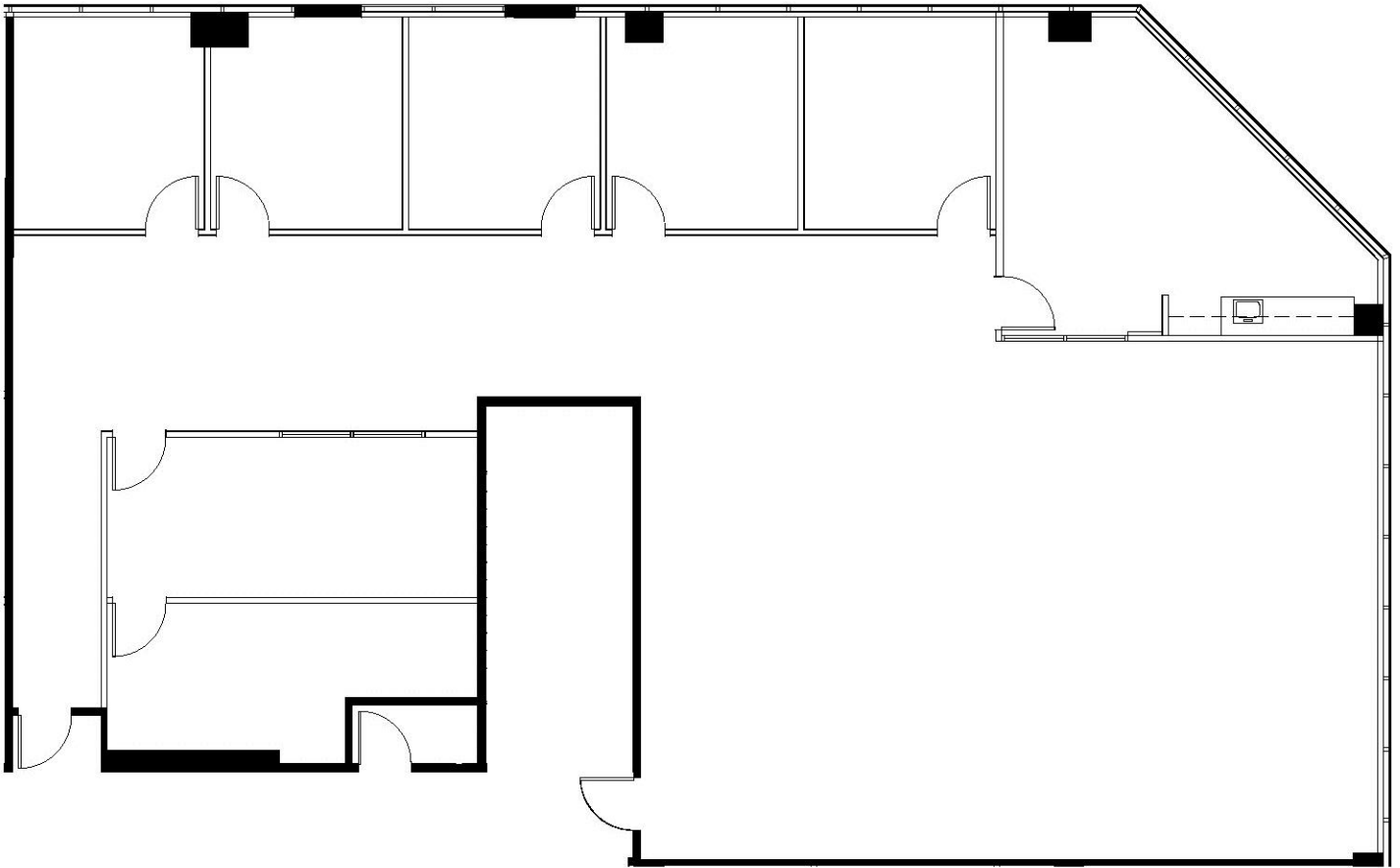
21700 E. COPLEY DRIVE

Diamond Bar, California

SUITE 360

3,796 RSF

GATEWAY CORPORATE CENTER



For leasing information,
please contact:

SEAN KERN | 909.942.4691
Senior Director
sean.kern@cushwake.com
Lic. # 01377294

RYAN RUSSELL | 909.942.4697
Director
ryan.russell@cushwake.com
Lic. #01505274





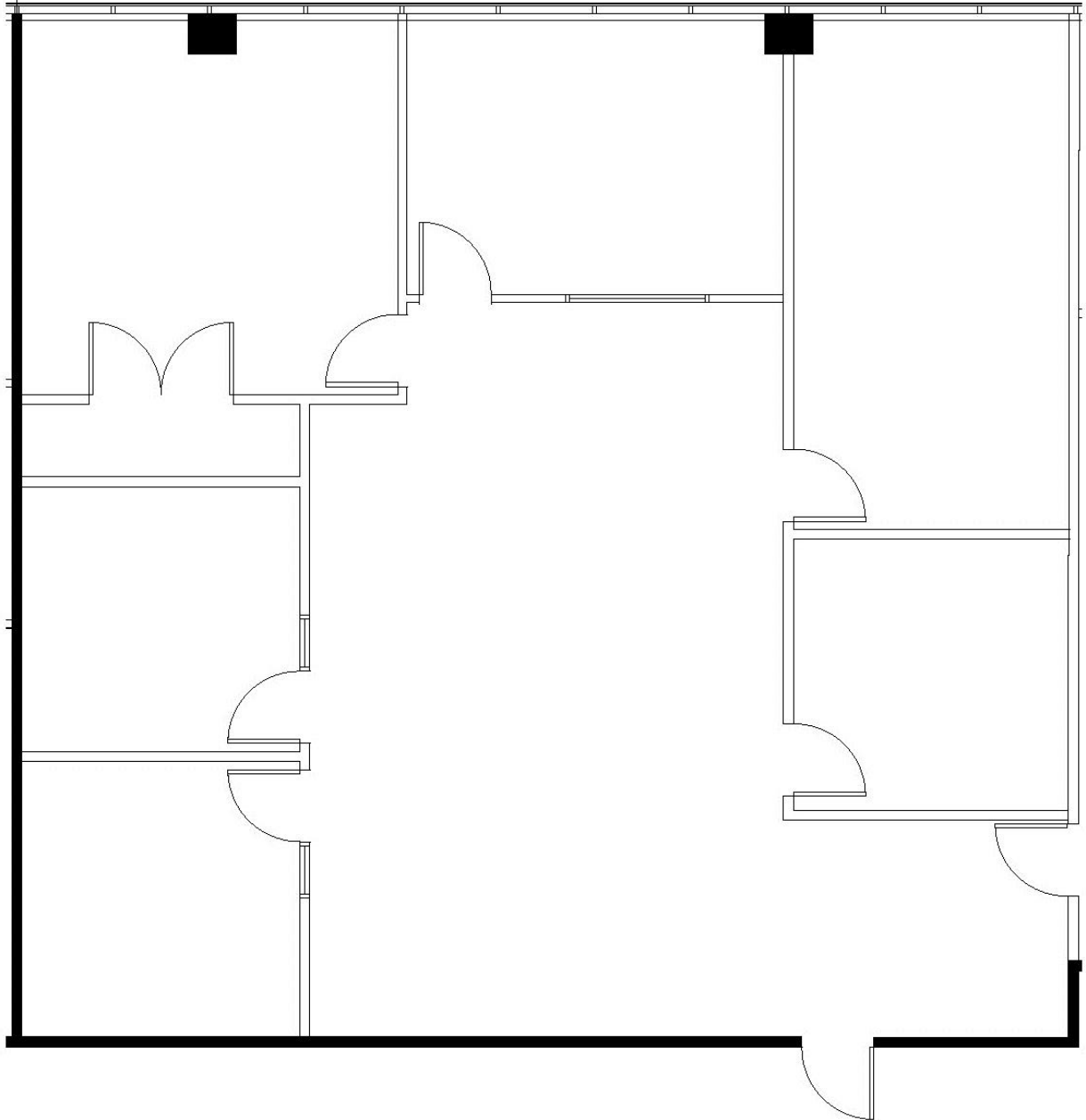
21700 E. COPLEY DRIVE

Diamond Bar, California

SUITE 380

2,182 RSF

GATEWAY CORPORATE CENTER



For leasing information,
please contact:

SEAN KERN | 909.942.4691
Senior Director
sean.kern@cushwake.com
Lic. # 01377294

RYAN RUSSELL | 909.942.4697
Director
ryan.russell@cushwake.com
Lic. #01505274



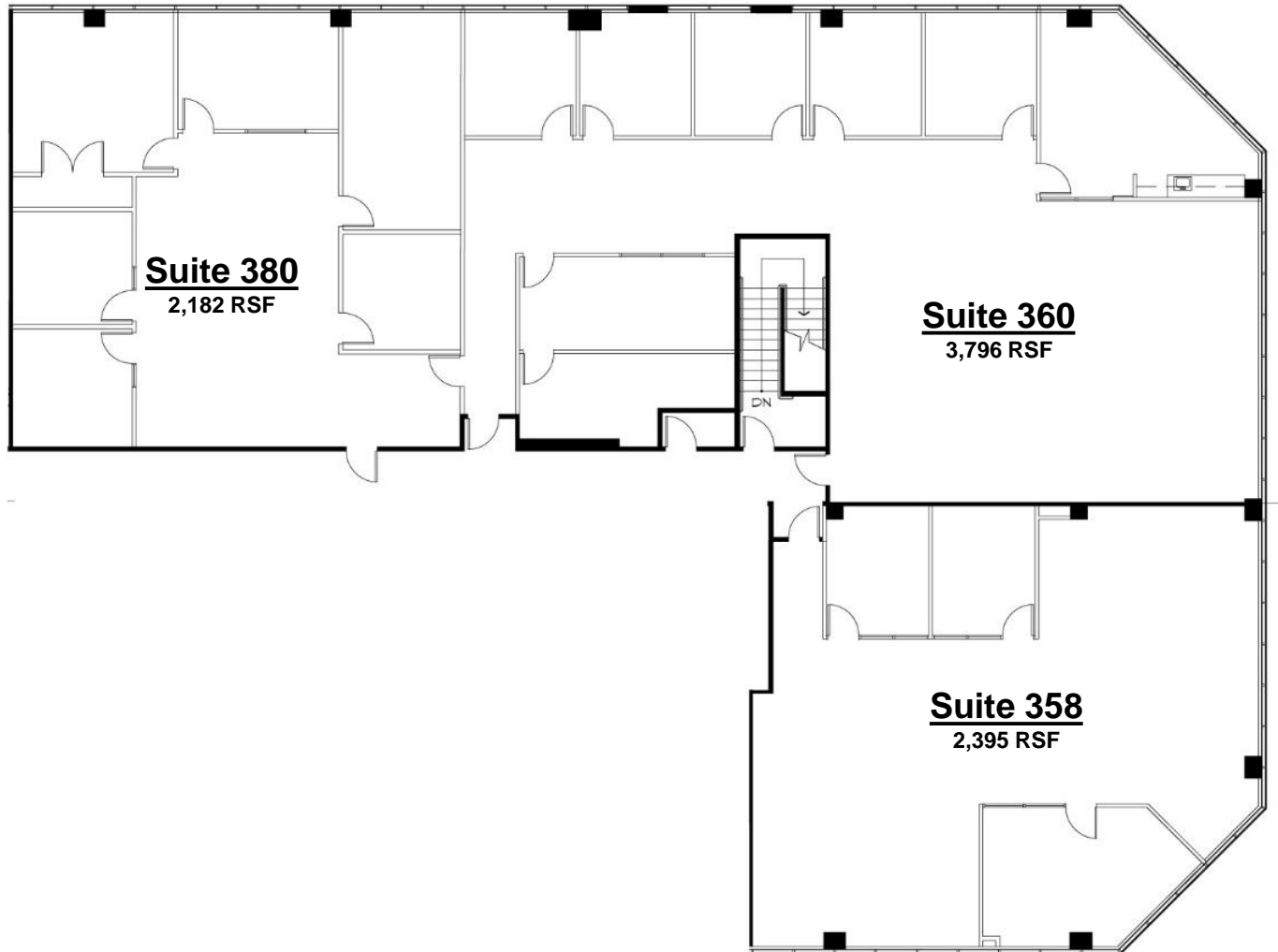


21700 E. COPLEY DRIVE

Diamond Bar, California

SUITES 358, 360 & 380 - CONTIGUOUS TO 8,373 SF

GATEWAY CORPORATE CENTER



For leasing information,
please contact:

SEAN KERN | 909.942.4691
Senior Director
sean.kern@cushwake.com
Lic. # 01377294

RYAN RUSSELL | 909.942.4697
Director
ryan.russell@cushwake.com
Lic. #01505274

