



1925 S. Eastern Avenue

Oklahoma City, Oklahoma 73129

PROPERTY HIGHLIGHTS

- 1.18 Acres Zoned I-2
- 135' of Frontage on S. Eastern



www.naisullivangroup.com

Bob Sullivan, CCIM

Cell: 1 405 641 9798

rsullivan@ccim.net

4045 N.W. 64th Street, Suite 340

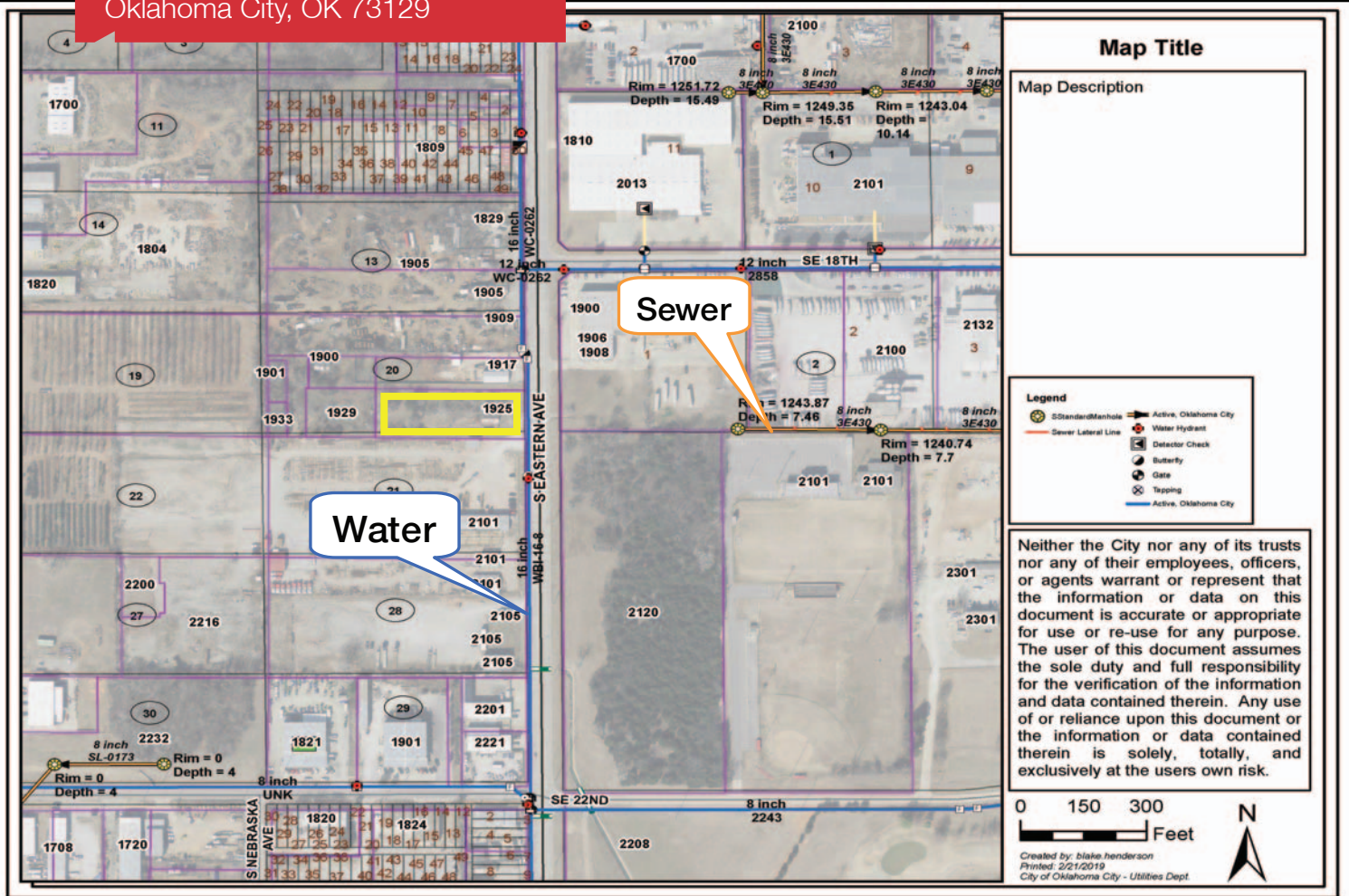
Oklahoma City, Oklahoma 73116

Office: 1 405 840 0600

Fax: 1 405 840 0610

NO WARRANTY OR REPRESENTATION, EXPRESS OR IMPLIED, IS MADE AS TO THE ACCURACY OF THE INFORMATION CONTAINED HEREIN, AND THE SAME IS SUBMITTED SUBJECT TO ERRORS, OMISSIONS, CHANGE OF PRICE, RENTAL OR OTHER CONDITIONS, PRIOR SALE, LEASE OR FINANCING, OR WITHDRAWAL WITHOUT NOTICE, AND OF ANY SPECIAL LISTING CONDITIONS IMPOSED BY OUR PRINCIPALS NO WARRANTIES OR REPRESENTATIONS ARE MADE AS TO THE CONDITION OF THE PROPERTY OR ANY HAZARDS CONTAINED THEREIN ARE ANY TO BE IMPLIED.

1925 S. Eastern Avenue
Oklahoma City, OK 73129



DEMOGRAPHICS

Population		
1 Mile: 3,060	3 Mile: 65,747	5 Mile: 201,630
Average Household Income		
1 Mile: \$31,150	3 Mile: \$34,360	5 Mile: \$36,658
Total Households		
1 Mile: 1,085	3 Mile: 24,866	5 Mile: 76,748

LOCATION HIGHLIGHTS

- Within Minutes of Downtown OKC
- Situated Between I-35 & I-40
- Dimensions: 135' x 356'

Bob Sullivan, CCIM

Cell: 1 405 641 9798
rsullivan@ccim.net

www.naisullivangroup.com

4045 N.W. 64th Street, Suite 340
Oklahoma City, Oklahoma 73116
Office: 1 405 840 0600
Fax: 1 405 840 0610

NAISullivan Group