

**756**  
**N. PASTORIA**  
AVENUE

SUNNYVALE | CA

YOUR NAME HERE

756 N. Pastoria Avenue

TAKE OUR VIRTUAL TOUR!

**±5,865 SF FOR LEASE**

Creative Open Ceiling Office/R&D/Mfg Space



TOM SWEENEY / 408.982.8493 / [tsweeney@ngkf.com](mailto:tsweeney@ngkf.com)  
CA RE License #00989779

LORI SWEENEY / 408.982.8491 / [lsweeney@ngkf.com](mailto:lsweeney@ngkf.com)  
CA RE License #01204105

DEREK YEP / 408.987.4106 / [dyep@ngkf.com](mailto:dyep@ngkf.com)  
CA RE License #01476099

CONOR BOONE / 408.987.4110 / [cboone@ngkf.com](mailto:cboone@ngkf.com)  
CA RE License #02089370



**756**  
**N. PASTORIA**  
AVENUE

## PROJECT HIGHLIGHTS

- Recently Updated Interiors Throughout
- 100% HVAC with Indirect Lighting and Spiral Ducting
- Server Room with Dedicated A/C
- Low Expenses / Approximately \$0.32
- 400 Amps, 240 / 120V / 3 Phase
- 3.3 /1,000 Parking + Street Parking
- Local / Responsive Ownership
- Adjacent to 1.4 Million SF Pathline Park Office Development
- Call for Pricing and to Tour

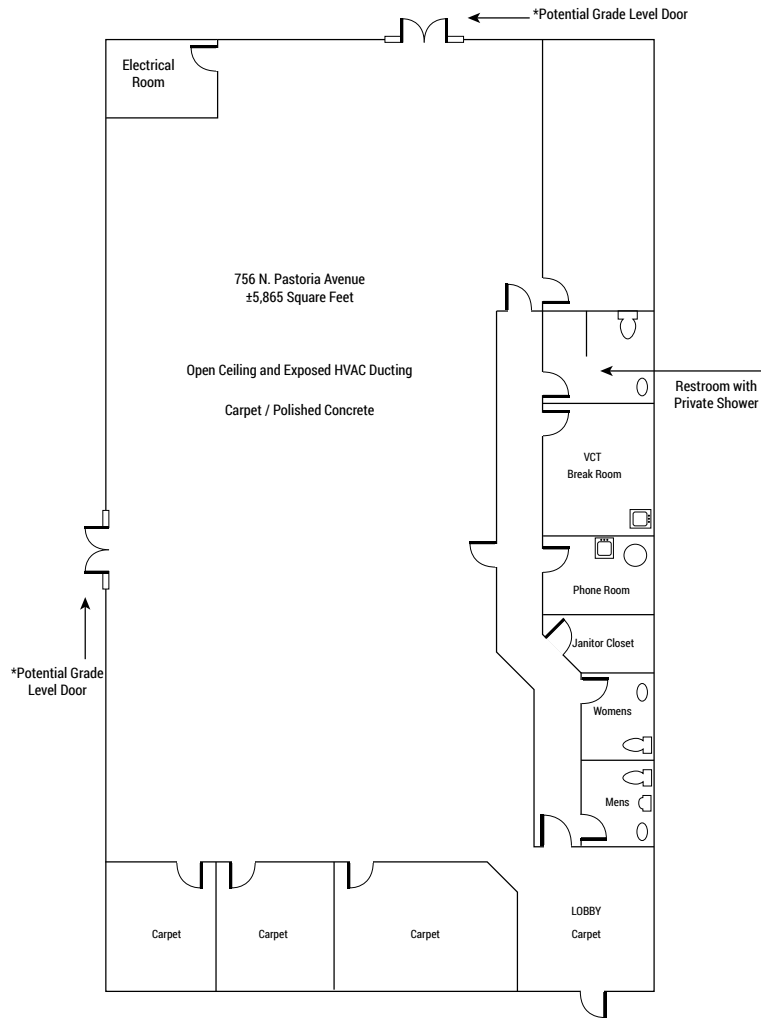


OPEN CEILING CREATIVE SPACE



# FLOOR PLAN

756  
N. PASTORIA  
AVENUE



TAKE OUR VIRTUAL TOUR!

# LOCATION MAP

756  
N. PASTORIA  
AVENUE





# 756 N. PASTORIA AVENUE

SUNNYVALE | CA

YOUR NAME HERE

756 N. Pastoria Avenue

The distributor of this communication is performing acts for which a real estate license is required. The information contained herein has been obtained from sources deemed reliable but has not been verified and no guarantee, warranty or representation, either express or implied, is made with respect to such information. Terms of sale or lease and availability are subject to change or withdrawal without notice. 12-0561 - 08/20



3055 Olin Avenue, Suite 2200, San Jose, CA 95128 | Tel: 408.727.9600 | Fax: 408.988.6340

**TOM SWEENEY** / 408.982.8493 / [tsweeney@ngkf.com](mailto:tsweeney@ngkf.com)  
CA RE License #00989779

**LORI SWEENEY** / 408.982.8491 / [lsweeney@ngkf.com](mailto:lsweeney@ngkf.com)  
CA RE License #01204105

**DEREK YEP** / 408.987.4106 / [dyep@ngkf.com](mailto:dyep@ngkf.com)  
CA RE License #01476099

**CONOR BOONE** / 408.987.4110 / [cboone@ngkf.com](mailto:cboone@ngkf.com)  
CA RE License #02089370