

SANTA MONICA, CA

1305

SECOND STREET

27,926 RSF AVAILABLE FOR LEASE • 1Q 2020



KING'S ARCH



CUSHMAN &
WAKEFIELD





SANTA MONICA, CA

1305

SECOND STREET

PROPERTY HIGHLIGHTS

Available Q1 2020

Fully restored, Iconic, free-standing office building in the heart of downtown Santa Monica

Historic 1917 construction
re-imagined by KFA Architects

Private rooftop deck

Operable windows

4 blocks to Expo Line

Steps from 3rd Street Promenade

Immediately adjacent to weekly
Santa Monica Farmers Market

Walk score of 94

Secured, on-site parking for up to 15 cars and
within two blocks of 9 City parking structures

SANTA MONICA, CA

1305

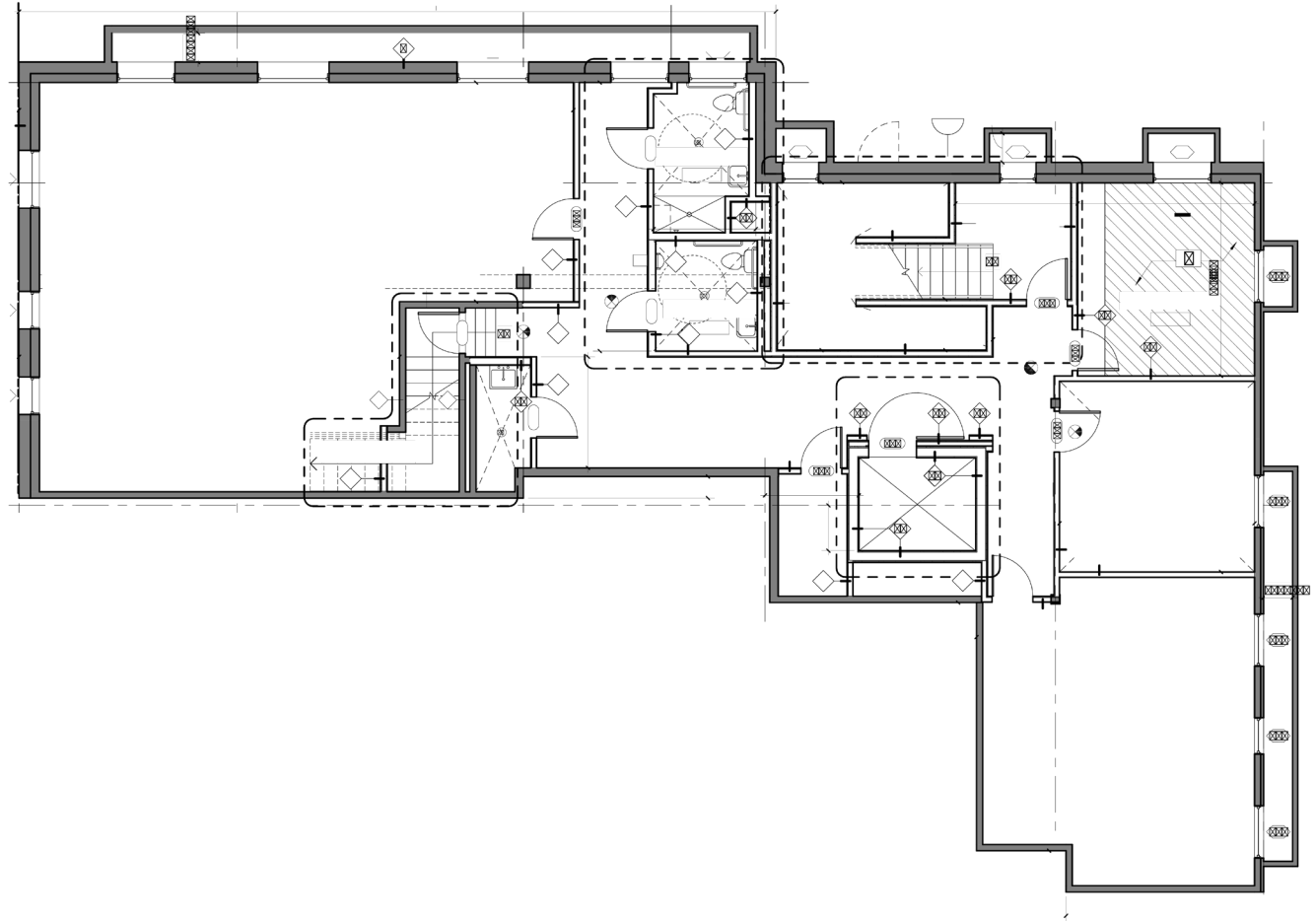
SECOND STREET

FLOOR PLAN

BASEMENT
3,330 RSF



ARIZONA AVENUE



2ND STREET

SANTA MONICA, CA

1305

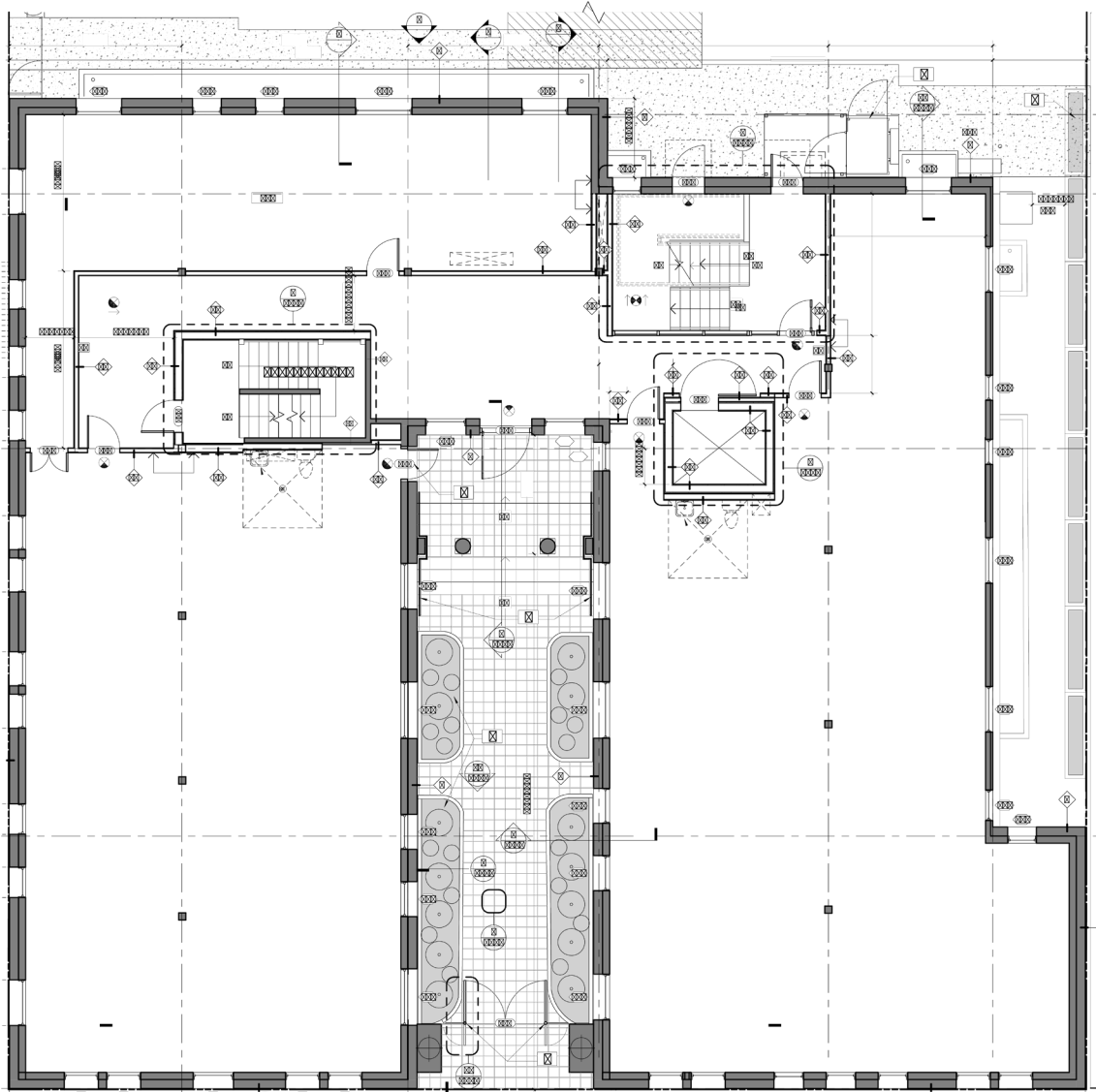
SECOND STREET

FLOOR PLAN

GROUND FLOOR
7,526 RSF



ARIZONA AVENUE



2ND STREET



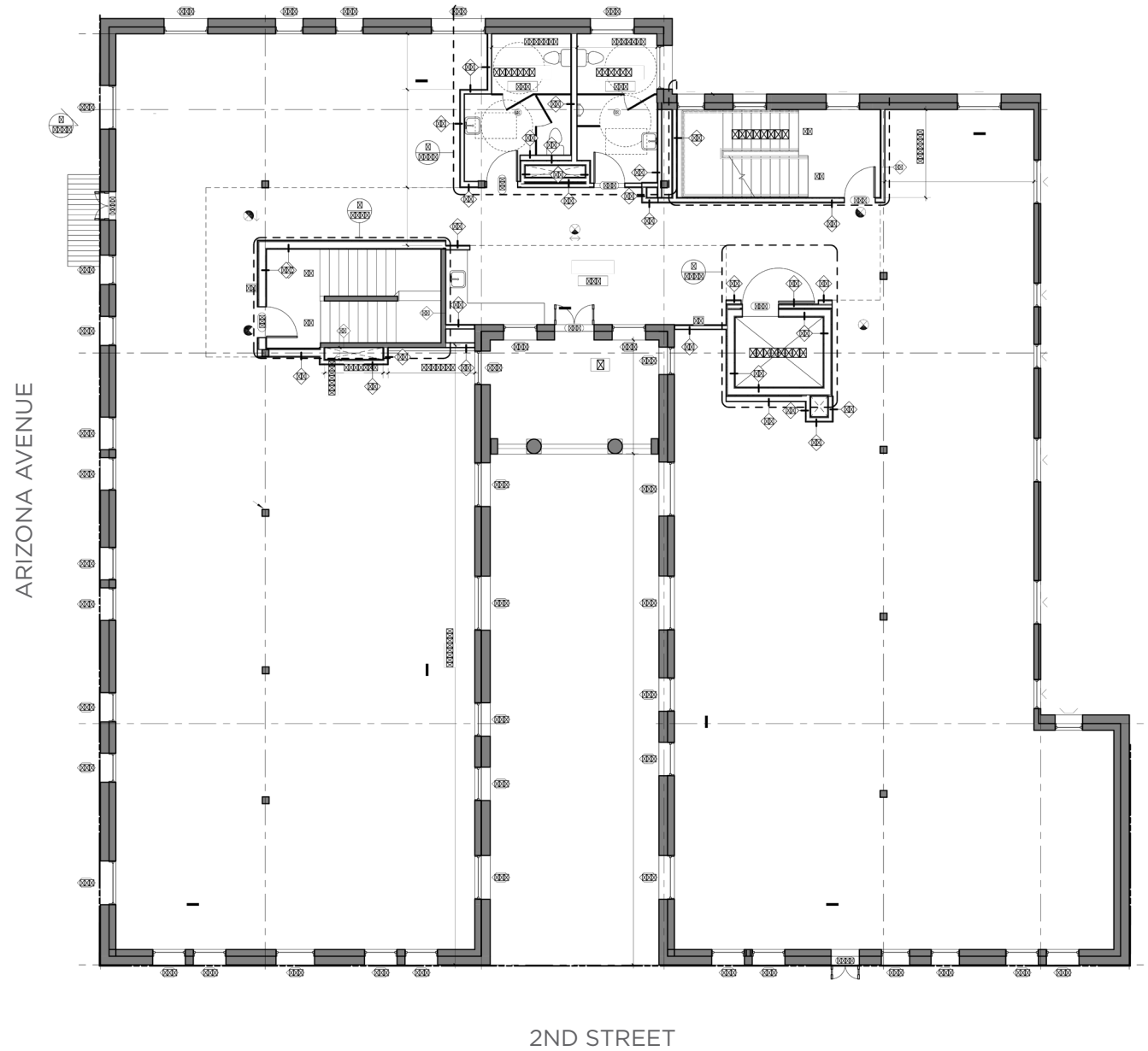
SANTA MONICA, CA

1305

SECOND STREET

FLOOR PLAN

SECOND FLOOR
7,522 RSF



ARIZONA AVENUE

2ND STREET

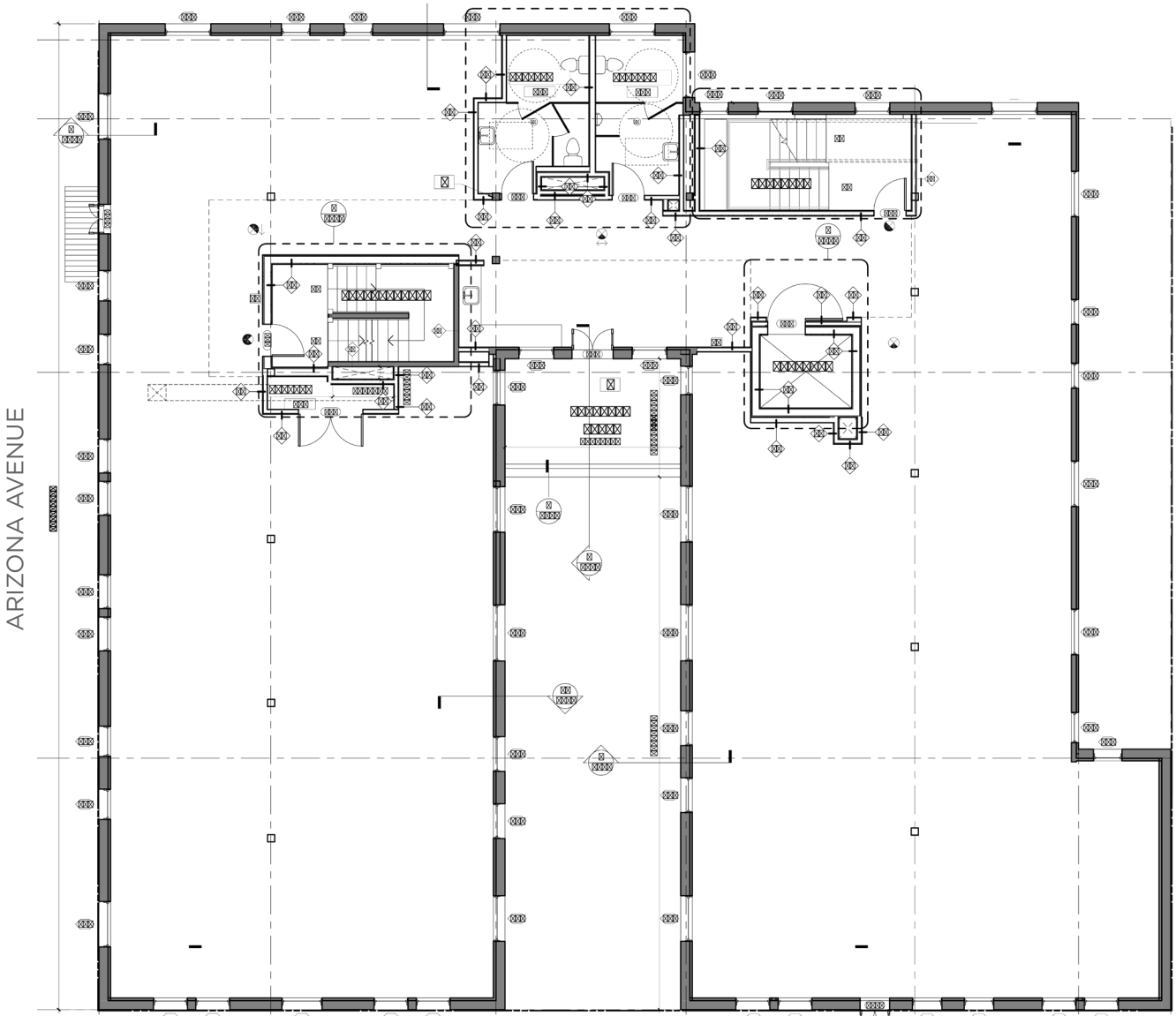
SANTA MONICA, CA

1305

SECOND STREET

FLOOR PLAN

THIRD FLOOR
7,522 RSF



ARIZONA AVENUE

2ND STREET



SANTA MONICA, CA

1305

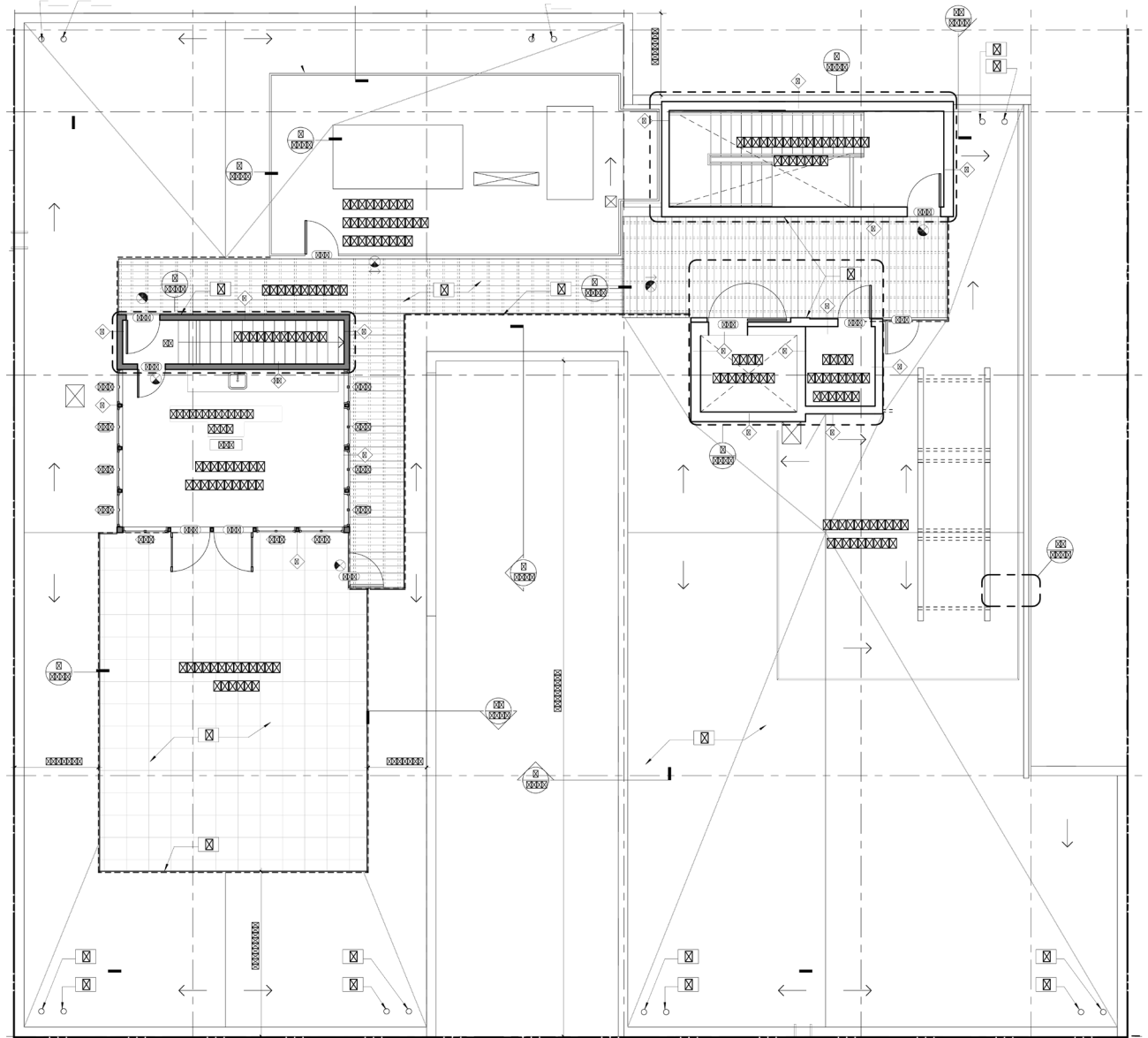
SECOND STREET

FLOOR PLAN

ROOF
2,026 RSF



ARIZONA AVENUE



2ND STREET

SANTA MONICA, CA
1305
SECOND STREET



SANTA MONICA

A world-class destination with a thriving economy.

Over 2,656 businesses in the technology and creative industry

The hub of technology, media and entertainment in Southern California



SANTA MONICA, CA
1305
SECOND STREET

PALIHOUSE

THE HUNTLEY HOTEL

FAIRMONT HOTEL

THE BUNGALOW

HILLSTONE

WALLY'S SANTA MONICA

SOULCYCLE

TENDER GREENS

HOTEL SHANGRI-LA

BLUE PLATE OYSTERETTE

BOA STEAKHOUSE

THE CRAFTSMAN

BLUE PLATE TACO

SHORE HOTEL

SANTA MONICA PIER

SANTA MONICA FARMERS MARKET

SUGAR FISH

ELEPHANTE

THE MISFIT

SUSHI ROKU

WATERGRILL

CASSIA

PHILZ COFFEE

MERCADO

SANTA MONICA PLACE

UMAMI BURGER

FRITTO MISTO

BODEGA WINE BAR

LOCAL AMENITIES





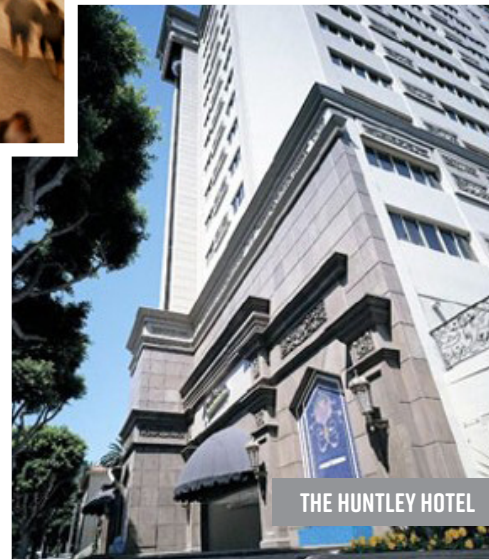
SANTA MONICA PLACE



BLUE PLATE TACO



WATERGRILL



THE HUNTLEY HOTEL



TENDER GREENS



THE BUNGALOW



ELEPHANTE



KING'S ARCH

FOR MORE INFORMATION:

SCOTT MENKUS

CA Lic 01476553

+1 310 595 2211

scott.menkus@cushwake.com

PETE COLLINS

CA Lic 01813645

+1 310 595 2227

peter.collins@cushwake.com

ERIC OLOFSON, II

CA Lic 00901159

+1 310 595 2216

eric.olofson@cushwake.com

SANTA MONICA, CA

1305

SECOND STREET



©2019 Cushman & Wakefield. All rights reserved. The information contained in this communication is strictly confidential. This information has been obtained from sources believed to be reliable but has not been verified. NO WARRANTY OR REPRESENTATION, EXPRESS OR IMPLIED, IS MADE AS TO THE CONDITION OF THE PROPERTY (OR PROPERTIES) REFERENCED HEREIN OR AS TO THE ACCURACY OR COMPLETENESS OF THE INFORMATION CONTAINED HEREIN, AND SAME IS SUBMITTED SUBJECT TO ERRORS, OMISSIONS, CHANGE OF PRICE, RENTAL OR OTHER CONDITIONS, WITHDRAWAL WITHOUT NOTICE, AND TO ANY SPECIAL LISTING CONDITIONS IMPOSED BY THE PROPERTY OWNER(S). ANY PROJECTIONS, OPINIONS OR ESTIMATES ARE SUBJECT TO UNCERTAINTY AND DO NOT SIGNIFY CURRENT OR FUTURE PROPERTY PERFORMANCE.