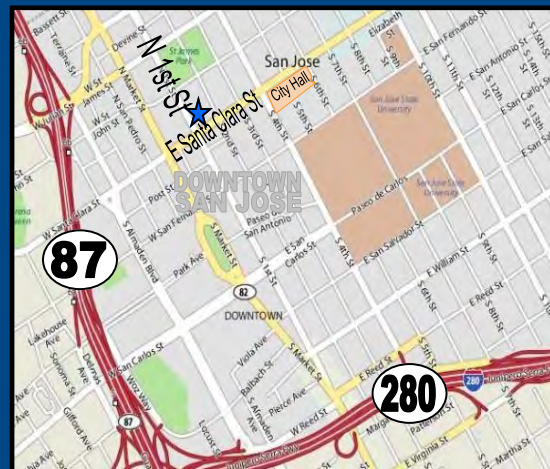




**28 N. FIRST STREET
SUITE 203
SAN JOSE,
CALIFORNIA**

**RETAIL/OFFICE CONDO
FOR LEASE
DOWNTOWN SAN JOSE**



PROPERTY HIGHLIGHTS:

- 242± SF Available
- \$650.00/Month, Full Service
- Open Office with Nice Window-line
- Basement Storage Available
- Near Intersection of Santa Clara St. and First St.
- On Site Security and Management
- Perfect For Small Business Such As CPA, Real Estate, Attorney.

ESTIMATED DEMOGRAPHICS:

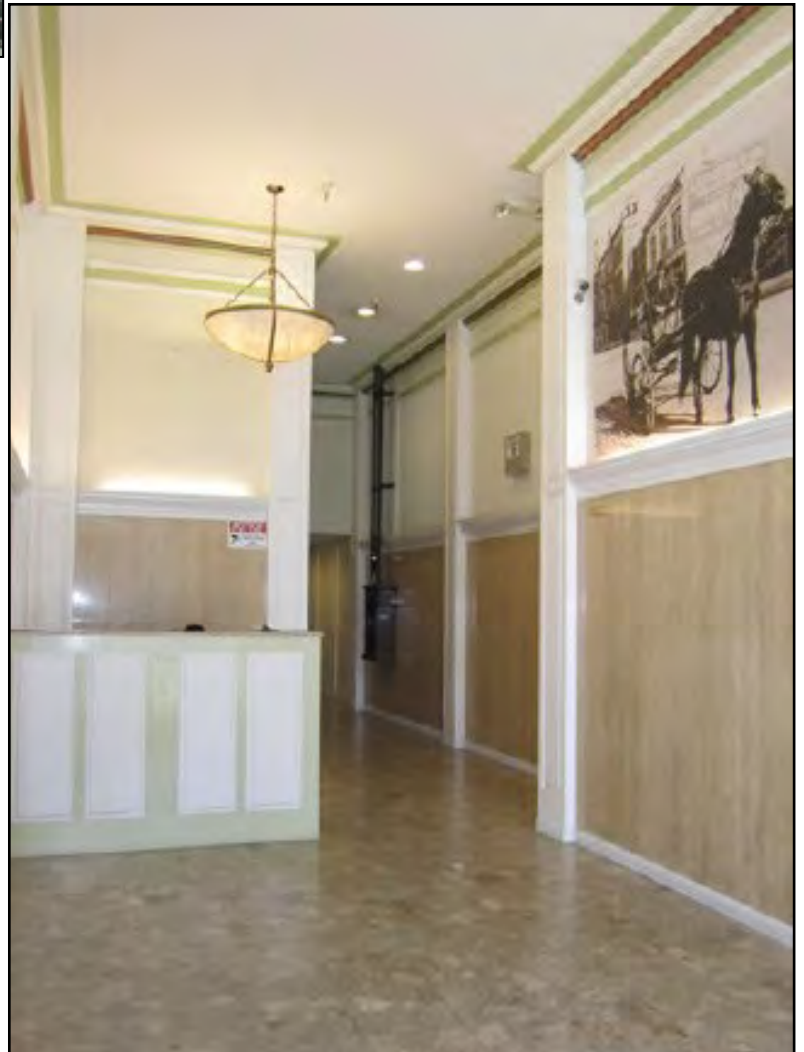
	<u>1 MILE</u>	<u>3 MILES</u>	<u>5 MILES</u>
POPULATION:	37,687	118,030	239,011
AVG. HH INCOME:	\$71,130	\$76,023	\$79,025

MEACHAM/OPPENHEIMER, INC.
CORFAC INTERNATIONAL
8 No. San Pedro St., Suite 300
San Jose, California 95110
Tel: 408.378.5900
Fax: 408.378.5903
www.moinc.net

FOR MORE INFORMATION CONTACT:

Michael Joseph, VP
Lic. #01382905
mjoseph@moinc.net
(408) 477-2502 Office
(408) 375-5572 Cell

28 N. FIRST STREET · SAN JOSE, CALIFORNIA



MEACHAM/OPPENHEIMER, INC.
CORFAC INTERNATIONAL
8 No. San Pedro St., Suite 300
San Jose, California 95110
Tel: 408.378.5900
Fax: 408.378.5903
www.moinc.net

Michael Joseph, VP
Lic. #01382905
mjoseph@moinc.net
(408) 375-5572
(408) 477-2502

28 N. FIRST STREET · SAN JOSE, CALIFORNIA



- Historic Building
- Located on the VTA Light Rail Line
- Surrounded by City-Owned and Private Parking Lots
- Close Proximity to Amenities

MEACHAM/OPPENHEIMER, INC.
CORFAC INTERNATIONAL
8 No. San Pedro St., Suite 300
San Jose, California 95110
Tel: 408.378.5900
Fax: 408.378.5903
www.moinc.net

Michael Joseph, VP
Lic. #01382905
mjoseph@moinc.net
(408) 375-5572
(408) 477-2502