



CORNERSTONE RETAIL

101 CORNERSTONE STREET | LYNCHBURG, VA 24502

FEATURES

- **2,400 SF end-cap available for lease.**
- Located in *Cornerstone*, Lynchburg's newest mixed-used development, totaling 25 acres.
- Signalized intersection of Greenview Drive and Cornerstone Street.
- Excellent visibility and direct frontage on Greenview Drive.
- Less than 5 minutes from every major retail artery in Lynchburg.
- Near Route 460, Wards Road, Timberlake Road and Enterprise Drive.
- Direct bus to *Liberty University*.



DEMOGRAPHICS*

| | 1 miles | 3 miles | 5 miles |
|----------------------|--------------------------------------|----------|----------|
| 2016 Est. Population | 5,975 | 38,857 | 75,612 |
| Avg HH Income | \$57,394 | \$61,347 | \$61,696 |
| Daytime Employment | 3,474 | 20,949 | 39,765 |
| Traffic Count | 29,500 VPD on Timberlake & Greenview | | |

* Detailed demographics upon request



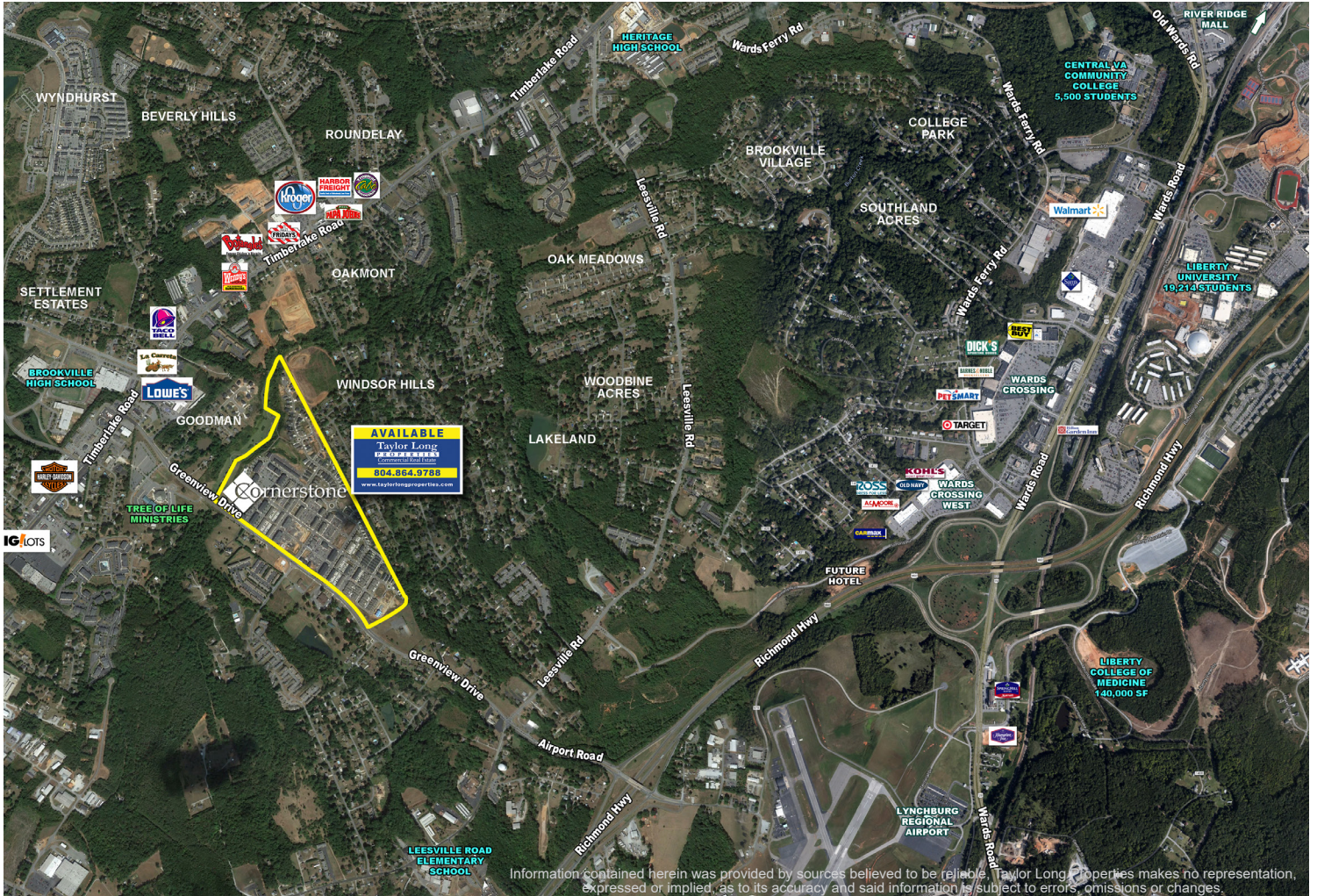
June Smith: 804.402.3725
 junsmith@taylorlongproperties.com

CoStar
POWER BROKER
 2016 Top Firm Award

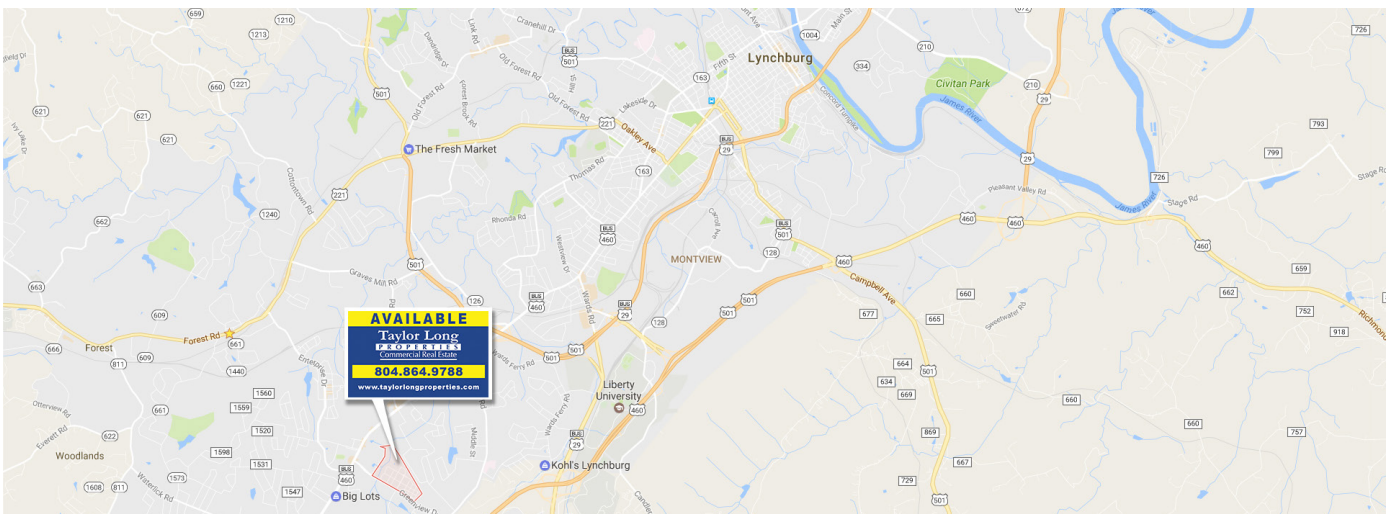
Taylor Long
PROPERTIES
 Commercial Real Estate



AERIAL/MAP



Information contained herein was provided by sources believed to be reliable. Taylor Long Properties makes no representation, expressed or implied, as to its accuracy and said information is subject to errors, omissions or changes.





PHOTOS

