

PAD AVAILABLE GROUND LEASE OR BUILD TO SUIT

S/SEC POWER RD. & ELLIOT RD.
MESA, AZ



PAD AVAILABLE

AVAILABLE

- Pad for up to 3,000 sf drive-thru

FEATURES

- EVO Swim School Adjacent
- Leman Academy Coming Soon
- 30,800 cars per day -Power Road
- Located 1 mile from Morrison Ranch

2018 Demographics	1 MILE	3 MILE	5 MILE
Estimated Population	6,033	77,481	231,262
Avg Household Income	\$89,479	\$95,644	\$89,554
Daytime Employment	1,023	21,077	66,675



DAVID JARAND
602.778.3834
davidj@srgaz.com

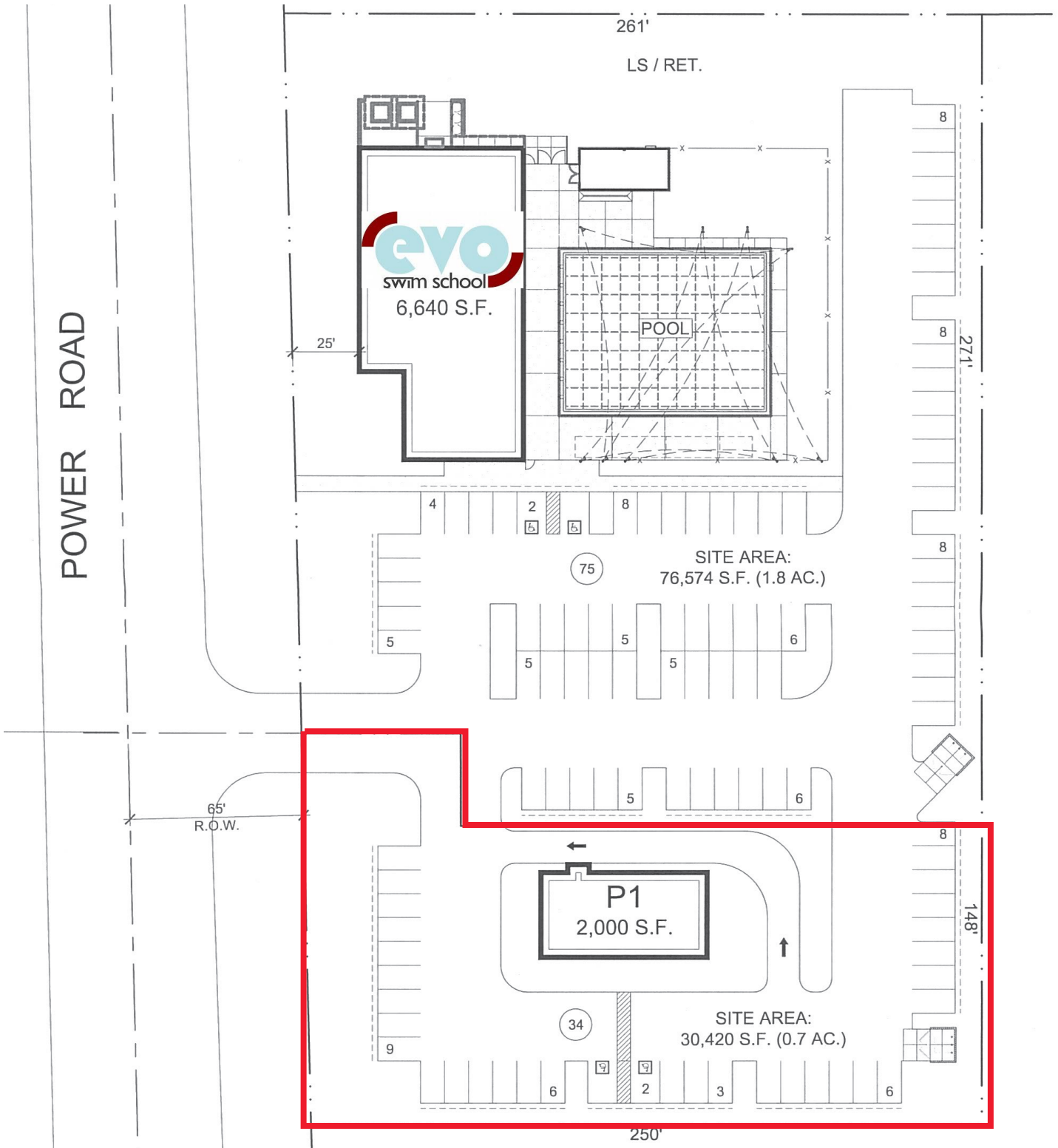
ERIN SCHRAUTH
602.792.5201
erins@srgaz.com

PAD AVAILABLE

PAD AVAILABLE GROUND LEASE OR BUILD TO SUIT

S/SEC POWER RD. & ELLIOT RD.

MESA, AZ



STRATEGIC

DAVID JARAND
602.778.3834
davidj@srgaz.com

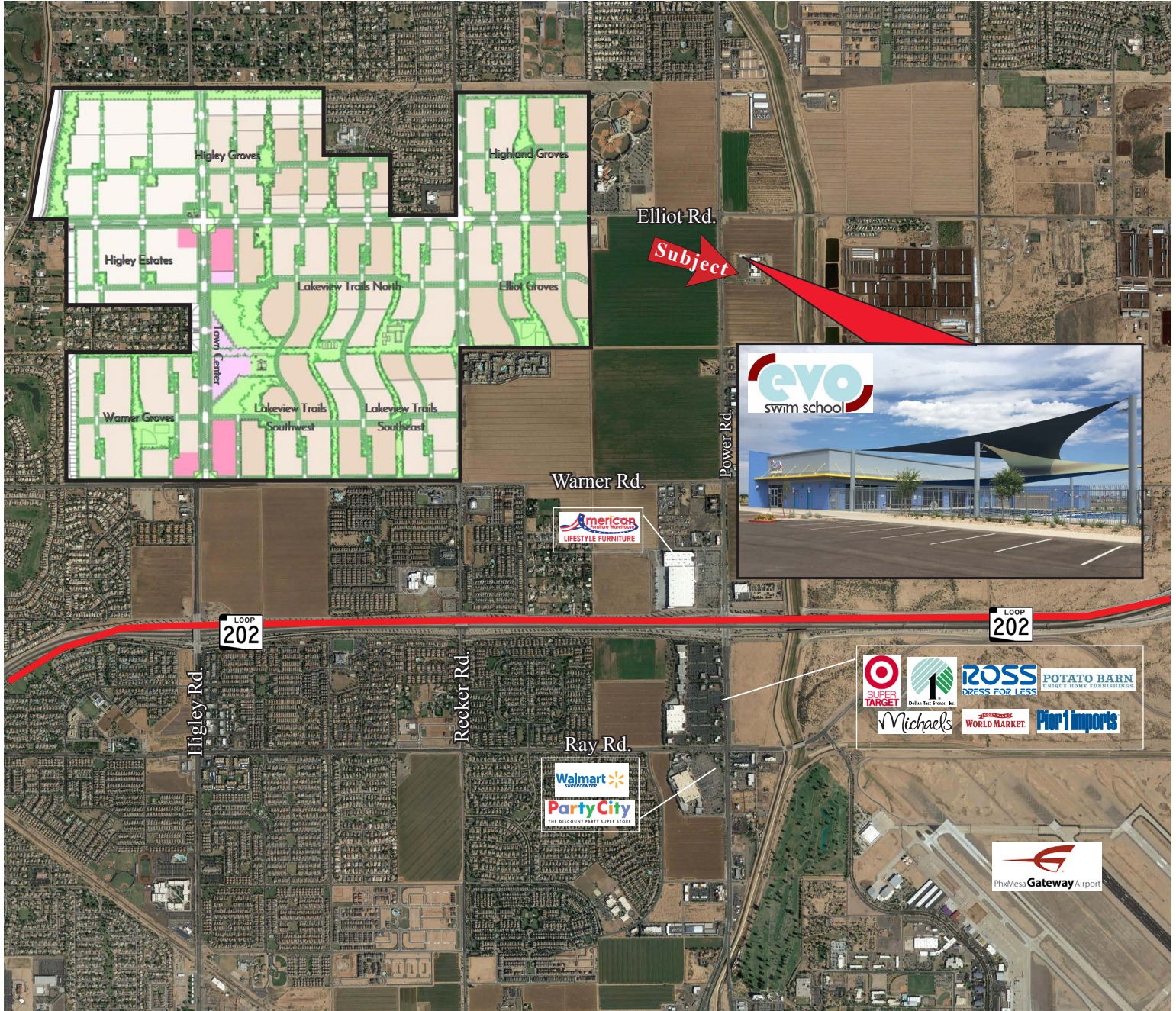
ERIN SCHRAUTH
602.792.5201
erins@srgaz.com

PAD AVAILABLE

PAD AVAILABLE GROUND LEASE OR BUILD TO SUIT

S/SEC POWER RD. & ELLIOT RD.

MESA, AZ



DAVID JARAND
602.778.3834
davidj@srgaz.com

ERIN SCHRAUTH
602.792.5201
erins@srgaz.com

EXPANDED PROFILE

2000-2010 Census, 2018 Estimates with 2023 Projections

Calculated using Weighted Block Centroid from Block Groups



Lat/Lon: 33.3506/-111.6874

RF5

S Power Rd & E Elliot Rd	1 mi radius	3 mi radius	5 mi radius
Population			
Estimated Population (2018)	6,033	77,481	231,262
Projected Population (2023)	6,559	84,146	251,107
Census Population (2010)	3,926	65,581	204,398
Census Population (2000)	1,198	34,525	131,906
Projected Annual Growth (2018 to 2023)	526 1.7%	6,665 1.7%	19,845 1.7%
Historical Annual Growth (2010 to 2018)	2,107 6.7%	11,900 2.3%	26,864 1.6%
Historical Annual Growth (2000 to 2010)	2,728 22.8%	31,056 9.0%	72,492 5.5%
Estimated Population Density (2018)	1,922 <i>psm</i>	2,741 <i>psm</i>	2,946 <i>psm</i>
Trade Area Size	3.14 <i>sq mi</i>	28.26 <i>sq mi</i>	78.50 <i>sq mi</i>
Households			
Estimated Households (2018)	1,855	26,694	87,389
Projected Households (2023)	1,953	28,114	92,062
Census Households (2010)	1,220	22,558	76,942
Census Households (2000)	321	11,995	49,626
Estimated Households with Children (2018)	980 52.9%	10,895 40.8%	29,125 33.3%
Estimated Average Household Size (2018)	3.25	2.90	2.63
Average Household Income			
Estimated Average Household Income (2018)	\$89,479	\$95,644	\$89,554
Projected Average Household Income (2023)	\$107,423	\$109,969	\$103,050
Estimated Average Family Income (2018)	\$97,197	\$107,553	\$107,108
Median Household Income			
Estimated Median Household Income (2018)	\$79,307	\$78,785	\$72,723
Projected Median Household Income (2023)	\$92,451	\$90,857	\$83,599
Estimated Median Family Income (2018)	\$86,572	\$89,296	\$87,150
Per Capita Income			
Estimated Per Capita Income (2018)	\$27,513	\$32,967	\$33,886
Projected Per Capita Income (2023)	\$31,984	\$36,757	\$37,822
Estimated Per Capita Income 5 Year Growth	\$4,471 16.3%	\$3,789 11.5%	\$3,936 11.6%
Estimated Average Household Net Worth (2018)	\$1,112,492	\$998,378	\$901,177
Daytime Demos (2018)			
Total Businesses	111	2,088	7,251
Total Employees	1,023	21,077	66,675
Company Headquarter Businesses	- 0.2%	6 0.3%	13 0.2%
Company Headquarter Employees	3 0.3%	371 1.8%	3,900 5.8%
Employee Population per Business	9.2	10.1	9.2
Residential Population per Business	54.4	37.1	31.9

This report was produced using data from private and government sources deemed to be reliable. The information herein is provided without representation or warranty.

EXPANDED PROFILE

2000-2010 Census, 2018 Estimates with 2023 Projections

Calculated using Weighted Block Centroid from Block Groups



Lat/Lon: 33.3506/-111.6874

RF5

S Power Rd & E Elliot Rd		1 mi radius		3 mi radius		5 mi radius	
Race & Ethnicity							
White (2018)	4,698	77.9%	60,666	78.3%	184,828	79.9%	
Black or African American (2018)	286	4.7%	3,429	4.4%	9,843	4.3%	
American Indian or Alaska Native (2018)	43	0.7%	734	0.9%	2,242	1.0%	
Asian (2018)	341	5.7%	4,332	5.6%	11,112	4.8%	
Hawaiian or Pacific Islander (2018)	11	0.2%	189	0.2%	480	0.2%	
Other Race (2018)	417	6.9%	4,887	6.3%	13,882	6.0%	
Two or More Races (2018)	237	3.9%	3,245	4.2%	8,875	3.8%	
Not Hispanic or Latino Population (2018)	4,998	82.8%	63,214	81.6%	189,119	81.8%	
Hispanic or Latino Population (2018)	1,035	17.2%	14,267	18.4%	42,143	18.2%	
Not Hispanic or Latino Population (2023)	5,319	81.1%	67,148	79.8%	200,868	80.0%	
Hispanic or Latino Population (2023)	1,240	18.9%	16,998	20.2%	50,239	20.0%	
Not Hispanic or Latino Population (2010)	3,368	85.8%	55,146	84.1%	173,007	84.6%	
Hispanic or Latino Population (2010)	558	14.2%	10,435	15.9%	31,391	15.4%	
Not Hispanic or Latino Population (2000)	1,083	90.4%	30,863	89.4%	118,602	89.9%	
Hispanic or Latino Population (2000)	115	9.6%	3,662	10.6%	13,304	10.1%	
Projected Hispanic Annual Growth (2018 to 2023)	205	4.0%	2,731	3.8%	8,096	3.8%	
Historic Hispanic Annual Growth (2000 to 2018)	920	44.5%	10,605	16.1%	28,839	12.0%	
Age Distribution (2018)							
Age Under 5	501	8.3%	5,933	7.7%	15,391	6.7%	
Age 5 to 9 Years	486	8.1%	5,981	7.7%	15,665	6.8%	
Age 10 to 14 Years	513	8.5%	6,158	7.9%	16,144	7.0%	
Age 15 to 19 Years	405	6.7%	5,301	6.8%	14,483	6.3%	
Age 20 to 24 Years	363	6.0%	4,385	5.7%	12,367	5.3%	
Age 25 to 29 Years	516	8.6%	5,912	7.6%	15,969	6.9%	
Age 30 to 34 Years	486	8.1%	5,876	7.6%	15,891	6.9%	
Age 35 to 39 Years	490	8.1%	5,837	7.5%	15,573	6.7%	
Age 40 to 44 Years	420	7.0%	5,182	6.7%	14,274	6.2%	
Age 45 to 49 Years	404	6.7%	5,006	6.5%	14,265	6.2%	
Age 50 to 54 Years	333	5.5%	4,329	5.6%	13,047	5.6%	
Age 55 to 59 Years	312	5.2%	3,890	5.0%	12,526	5.4%	
Age 60 to 64 Years	252	4.2%	3,513	4.5%	11,915	5.2%	
Age 65 to 74 Years	350	5.8%	5,699	7.4%	22,476	9.7%	
Age 75 to 84 Years	148	2.4%	3,378	4.4%	14,745	6.4%	
Age 85 Years or Over	53	0.9%	1,102	1.4%	6,533	2.8%	
Median Age	31.5		34.3		38.8		
Gender Age Distribution (2018)							
Female Population	3,159	52.4%	39,807	51.4%	119,832	51.8%	
Age 0 to 19 Years	936	29.6%	11,342	28.5%	29,757	24.8%	
Age 20 to 64 Years	1,890	59.8%	22,862	57.4%	65,290	54.5%	
Age 65 Years or Over	332	10.5%	5,603	14.1%	24,785	20.7%	
Female Median Age	32.4		35.2		40.4		
Male Population	2,874	47.6%	37,673	48.6%	111,430	48.2%	
Age 0 to 19 Years	970	33.7%	12,030	31.9%	31,926	28.7%	
Age 20 to 64 Years	1,686	58.7%	21,067	55.9%	60,536	54.3%	
Age 65 Years or Over	218	7.6%	4,576	12.1%	18,968	17.0%	
Male Median Age	30.6		33.4		37.2		

This report was produced using data from private and government sources deemed to be reliable. The information herein is provided without representation or warranty.

EXPANDED PROFILE

2000-2010 Census, 2018 Estimates with 2023 Projections

Calculated using Weighted Block Centroid from Block Groups



Lat/Lon: 33.3506/-111.6874

RF5

S Power Rd & E Elliot Rd

	1 mi radius		3 mi radius		5 mi radius	
Household Income Distribution (2018)						
HH Income \$200,000 or More	175	9.4%	1,845	6.9%	5,392	6.2%
HH Income \$150,000 to \$199,999	175	9.4%	2,423	9.1%	6,819	7.8%
HH Income \$100,000 to \$149,999	374	20.1%	5,175	19.4%	15,115	17.3%
HH Income \$75,000 to \$99,999	262	14.1%	4,055	15.2%	12,801	14.6%
HH Income \$50,000 to \$74,999	330	17.8%	5,142	19.3%	16,688	19.1%
HH Income \$35,000 to \$49,999	147	7.9%	2,978	11.2%	11,257	12.9%
HH Income \$25,000 to \$34,999	82	4.4%	1,698	6.4%	6,574	7.5%
HH Income \$15,000 to \$24,999	95	5.1%	1,407	5.3%	6,243	7.1%
HH Income Under \$15,000	217	11.7%	1,971	7.4%	6,501	7.4%
HH Income \$35,000 or More	1,462	78.8%	21,617	81.0%	68,071	77.9%
HH Income \$75,000 or More	985	53.1%	13,497	50.6%	40,127	45.9%
Housing (2018)						
Total Housing Units	1,899		28,226		97,962	
Housing Units Occupied	1,855	97.7%	26,694	94.6%	87,389	89.2%
Housing Units Owner-Occupied	1,138	61.3%	19,511	73.1%	63,389	72.5%
Housing Units, Renter-Occupied	717	38.7%	7,182	26.9%	24,000	27.5%
Housing Units, Vacant	44	2.3%	1,533	5.4%	10,573	10.8%
Marital Status (2018)						
Never Married	1,327	29.3%	17,229	29.0%	49,335	26.8%
Currently Married	2,655	58.6%	31,615	53.2%	94,687	51.4%
Separated	84	1.9%	1,902	3.2%	6,386	3.5%
Widowed	93	2.0%	2,253	3.8%	11,522	6.3%
Divorced	374	8.3%	6,411	10.8%	22,132	12.0%
Household Type (2018)						
Population Family	5,469	90.6%	68,424	88.3%	195,633	84.6%
Population Non-Family	562	9.3%	8,886	11.5%	34,192	14.8%
Population Group Quarters	2	-	171	0.2%	1,436	0.6%
Family Households	1,466	79.0%	20,058	75.1%	60,280	69.0%
Non-Family Households	389	21.0%	6,636	24.9%	27,109	31.0%
Married Couple with Children	659	24.8%	7,791	24.6%	20,168	21.3%
Average Family Household Size	3.7		3.4		3.2	
Household Size (2018)						
1 Person Households	253	13.6%	4,889	18.3%	21,506	24.6%
2 Person Households	427	23.0%	8,463	31.7%	29,898	34.2%
3 Person Households	440	23.7%	4,632	17.4%	13,099	15.0%
4 Person Households	393	21.2%	4,551	17.0%	12,208	14.0%
5 Person Households	190	10.3%	2,435	9.1%	6,271	7.2%
6 or More Person Households	151	8.1%	1,724	6.5%	4,408	5.0%
Household Vehicles (2018)						
Households with 0 Vehicles Available	73	3.9%	749	2.8%	3,568	4.1%
Households with 1 Vehicles Available	570	30.7%	8,310	31.1%	31,381	35.9%
Households with 2 or More Vehicles Available	1,213	65.4%	17,634	66.1%	52,441	60.0%
Total Vehicles Available	3,503		51,234		158,376	
Average Vehicles Per Household	1.9		1.9		1.8	

This report was produced using data from private and government sources deemed to be reliable. The information herein is provided without representation or warranty.

EXPANDED PROFILE

2000-2010 Census, 2018 Estimates with 2023 Projections

Calculated using Weighted Block Centroid from Block Groups



Lat/Lon: 33.3506/-111.6874

RF5

S Power Rd & E Elliot Rd	1 mi radius	3 mi radius	5 mi radius
Labor Force (2018)			
Estimated Labor Population Age 16 Years or Over	4,433	58,257	181,066
Estimated Civilian Employed	3,027 68.3%	37,304 64.0%	109,425 60.4%
Estimated Civilian Unemployed	127 2.9%	1,348 2.3%	3,766 2.1%
Estimated in Armed Forces	23 0.5%	70 0.1%	176 0.1%
Estimated Not in Labor Force	1,256 28.3%	19,534 33.5%	67,699 37.4%
Unemployment Rate	2.9%	2.3%	2.1%
Occupation (2015)			
Occupation: Population Age 16 Years or Over	3,108	37,558	109,261
Management, Business, Financial Operations	547 17.6%	6,542 17.4%	18,509 16.9%
Professional, Related	779 25.1%	9,843 26.2%	26,636 24.4%
Service	461 14.8%	5,566 14.8%	16,777 15.4%
Sales, Office	693 22.3%	9,859 26.3%	30,225 27.7%
Farming, Fishing, Forestry	3 0.1%	52 0.1%	133 0.1%
Construct, Extraction, Maintenance	242 7.8%	2,426 6.5%	7,816 7.2%
Production, Transport Material Moving	383 12.3%	3,269 8.7%	9,164 8.4%
White Collar Workers	2,019 65.0%	26,244 69.9%	75,370 69.0%
Blue Collar Workers	1,089 35.0%	11,314 30.1%	33,890 31.0%
Consumer Expenditure (2018)			
Total Household Expenditure	\$120 M	\$1.81 B	\$5.66 B
Total Non-Retail Expenditure	\$62.9 M 52.3%	\$946 M 52.1%	\$2.95 B 52.1%
Total Retail Expenditure	\$57.3 M 47.7%	\$869 M 47.9%	\$2.71 B 47.9%
Apparel	\$4.27 M 3.6%	\$63.9 M 3.5%	\$199 M 3.5%
Contributions	\$5.61 M 4.7%	\$83.1 M 4.6%	\$256 M 4.5%
Education	\$4.93 M 4.1%	\$71.1 M 3.9%	\$217 M 3.8%
Entertainment	\$6.81 M 5.7%	\$103 M 5.7%	\$320 M 5.6%
Food and Beverages	\$17.3 M 14.4%	\$263 M 14.5%	\$823 M 14.5%
Furnishings and Equipment	\$4.24 M 3.5%	\$63.9 M 3.5%	\$198 M 3.5%
Gifts	\$3.14 M 2.6%	\$46.7 M 2.6%	\$144 M 2.5%
Health Care	\$9.06 M 7.5%	\$140 M 7.7%	\$443 M 7.8%
Household Operations	\$3.67 M 3.1%	\$54.3 M 3.0%	\$167 M 2.9%
Miscellaneous Expenses	\$1.72 M 1.4%	\$26.2 M 1.4%	\$82.4 M 1.5%
Personal Care	\$1.55 M 1.3%	\$23.5 M 1.3%	\$73.4 M 1.3%
Personal Insurance	\$951 K 0.8%	\$14.1 M 0.8%	\$43.4 M 0.8%
Reading	\$265 K 0.2%	\$4.02 M 0.2%	\$12.6 M 0.2%
Shelter	\$24.7 M 20.6%	\$374 M 20.6%	\$1.17 B 20.6%
Tobacco	\$659 K 0.5%	\$10.2 M 0.6%	\$32.8 M 0.6%
Transportation	\$22.5 M 18.7%	\$342 M 18.9%	\$1.07 B 18.9%
Utilities	\$8.69 M 7.2%	\$132 M 7.3%	\$416 M 7.3%
Educational Attainment (2018)			
Adult Population Age 25 Years or Over	3,764	49,723	157,212
Elementary (Grade Level 0 to 8)	150 4.0%	1,249 2.5%	3,844 2.4%
Some High School (Grade Level 9 to 11)	206 5.5%	1,978 4.0%	6,362 4.0%
High School Graduate	762 20.3%	10,019 20.1%	35,980 22.9%
Some College	944 25.1%	13,246 26.6%	42,882 27.3%
Associate Degree Only	374 9.9%	4,801 9.7%	15,091 9.6%
Bachelor Degree Only	895 23.8%	12,416 25.0%	35,462 22.6%
Graduate Degree	433 11.5%	6,014 12.1%	17,591 11.2%

This report was produced using data from private and government sources deemed to be reliable. The information herein is provided without representation or warranty.

EXPANDED PROFILE

2000-2010 Census, 2018 Estimates with 2023 Projections

Calculated using Weighted Block Centroid from Block Groups



Lat/Lon: 33.3506/-111.6874

RF5

S Power Rd & E Elliot Rd	1 mi radius		3 mi radius		5 mi radius	
Units In Structure (2015)						
1 Detached Unit	1,393	114.1	21,326	94.5%	63,268	82.2%
1 Attached Unit	24	2.0%	1,017	4.5%	4,351	5.7%
2 to 4 Units	69	5.7%	513	2.3%	2,037	2.6%
5 to 9 Units	46	3.8%	851	3.8%	2,624	3.4%
10 to 19 Units	234	19.2%	1,121	5.0%	2,741	3.6%
20 to 49 Units	27	2.2%	251	1.1%	1,145	1.5%
50 or More Units	79	6.5%	638	2.8%	3,037	3.9%
Mobile Home or Trailer	35	2.9%	1,128	5.0%	7,876	10.2%
Other Structure	-	-	17	0.1%	182	0.2%
Homes Built By Year (2015)						
Homes Built 2010 or later	73	6.0%	759	3.4%	2,090	2.7%
Homes Built 2000 to 2009	1,038	85.1%	9,997	44.3%	26,671	34.7%
Homes Built 1990 to 1999	523	42.9%	9,168	40.6%	26,330	34.2%
Homes Built 1980 to 1989	85	7.0%	2,248	10.0%	13,786	17.9%
Homes Built 1970 to 1979	79	6.5%	1,761	7.8%	10,150	13.2%
Homes Built 1960 to 1969	27	2.2%	612	2.7%	2,737	3.6%
Homes Built 1950 to 1959	13	1.1%	272	1.2%	1,226	1.6%
Homes Built Before 1949	6	0.5%	204	0.9%	608	0.8%
Home Values (2015)						
Home Values \$1,000,000 or More	5	0.6%	96	0.6%	374	0.7%
Home Values \$500,000 to \$999,999	38	5.0%	1,119	6.9%	3,710	6.6%
Home Values \$400,000 to \$499,999	109	14.4%	1,488	9.2%	4,037	7.2%
Home Values \$300,000 to \$399,999	289	38.2%	3,288	20.2%	9,392	16.8%
Home Values \$200,000 to \$299,999	346	45.7%	7,197	44.2%	20,619	36.9%
Home Values \$150,000 to \$199,999	188	24.8%	3,856	23.7%	12,221	21.9%
Home Values \$100,000 to \$149,999	37	4.9%	1,456	9.0%	5,989	10.7%
Home Values \$70,000 to \$99,999	13	1.7%	289	1.8%	2,048	3.7%
Home Values \$50,000 to \$69,999	4	0.5%	162	1.0%	1,151	2.1%
Home Values \$25,000 to \$49,999	4	0.6%	142	0.9%	968	1.7%
Home Values Under \$25,000	12	1.6%	458	2.8%	2,434	4.4%
Owner-Occupied Median Home Value	\$283,846		\$246,643		\$223,450	
Renter-Occupied Median Rent	\$1,111		\$1,030		\$1,024	
Transportation To Work (2015)						
Drive to Work Alone	2,304	77.1%	28,876	77.8%	85,145	77.3%
Drive to Work in Carpool	332	11.1%	4,081	11.0%	11,535	10.5%
Travel to Work by Public Transportation	49	1.6%	453	1.2%	1,314	1.2%
Drive to Work on Motorcycle	22	0.7%	187	0.5%	514	0.5%
Walk or Bicycle to Work	58	1.9%	600	1.6%	1,885	1.7%
Other Means	53	1.8%	425	1.1%	1,247	1.1%
Work at Home	170	5.7%	2,472	6.7%	8,441	7.7%
Travel Time (2015)						
Travel to Work in 14 Minutes or Less	439	15.6%	6,815	19.7%	19,994	19.7%
Travel to Work in 15 to 29 Minutes	1,319	46.8%	13,587	39.2%	37,871	37.3%
Travel to Work in 30 to 59 Minutes	893	31.7%	12,078	34.9%	35,424	34.9%
Travel to Work in 60 Minutes or More	276	9.8%	2,621	7.6%	7,808	7.7%
Average Minutes Travel to Work	23.9		24.4		24.5	

This report was produced using data from private and government sources deemed to be reliable. The information herein is provided without representation or warranty.