

17/UNION HILLS BUSINESS CENTER

Available:

Suite 110 7,262 SF (August 2019)



2350 & 2400 West Union Hills Drive, Phoenix, Arizona 85027

112,592 SF
2 Building Project
FOR LEASE

 **LEE &
ASSOCIATES**
COMMERCIAL REAL ESTATE SERVICES

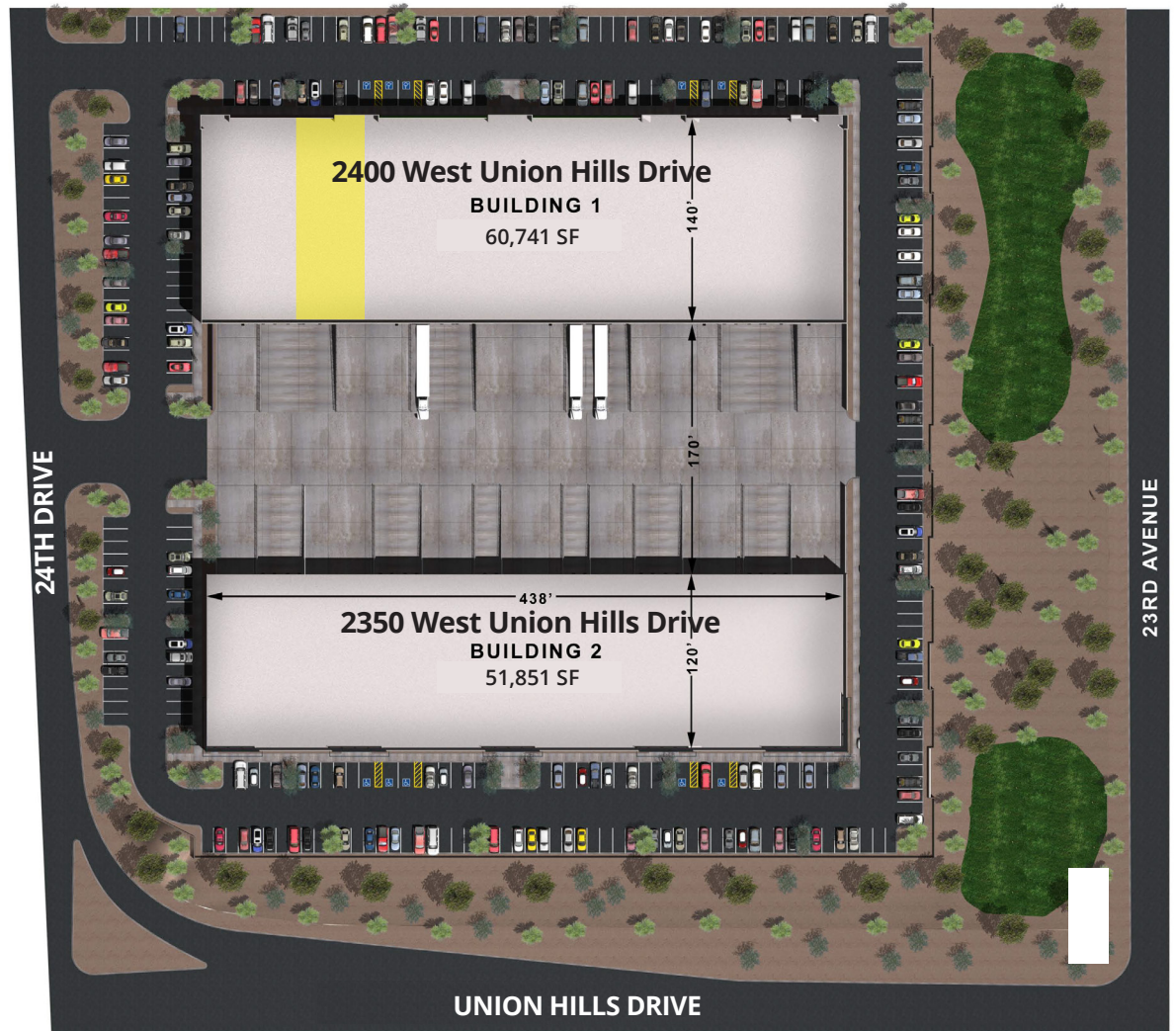
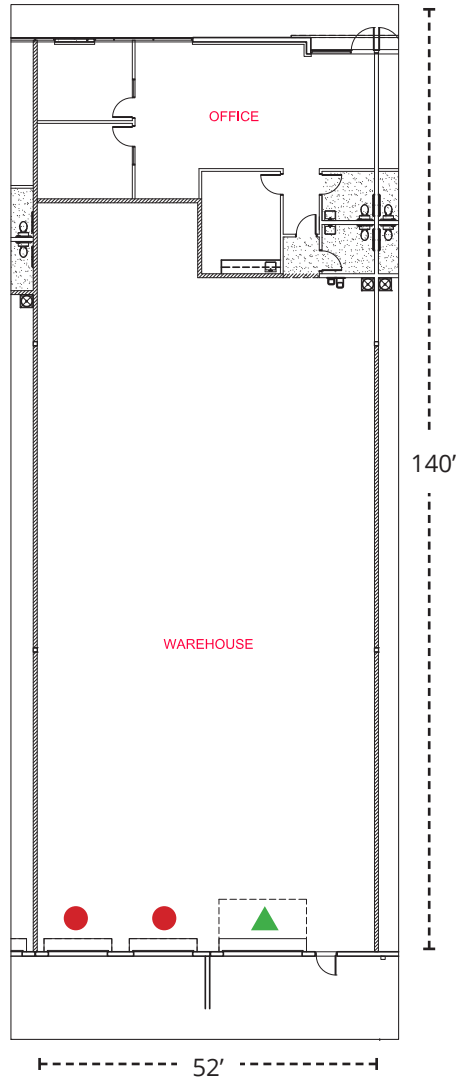
 **SUNSTATE**
BUILDERS

2350 & 2400 West Union Hills Drive

Phoenix, AZ 85027

FOR LEASE

SUITE 110
FLOORPLAN
7,262 SF



MATT HOBAICA, SIOR
PRINCIPAL
602.954.3755
mhobaica@leearizona.com

JEFF CONRAD, SIOR
PRINCIPAL
602.954.3743
jconrad@leearizona.com

 **LEE & ASSOCIATES**
COMMERCIAL REAL ESTATE SERVICES



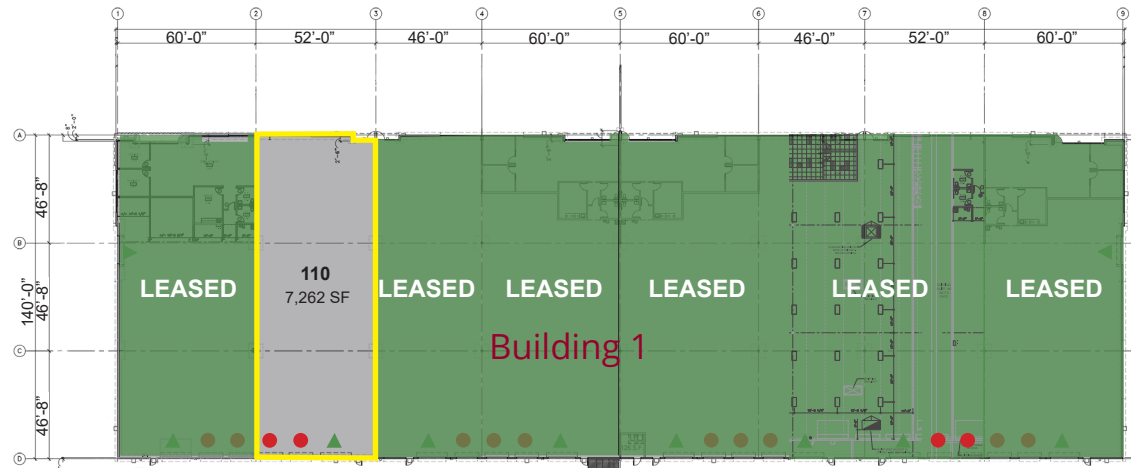
2350 & 2400 West Union Hills Drive Phoenix, AZ 85027

FOR LEASE

Building 1: 2400 W. Union Hills Drive 60,741 SF (Divisible)

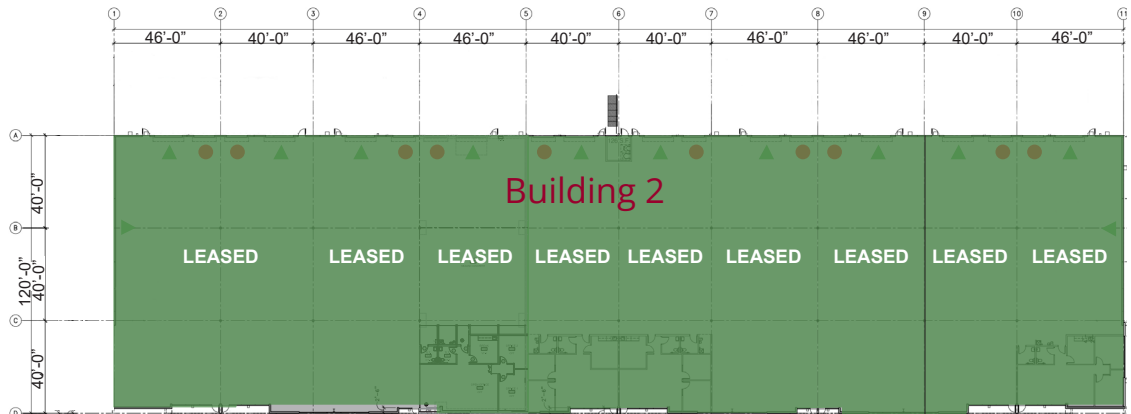
AVAILABLE

- Suite 110 - 7,262 SF
- 24' clear height
- 2 - 10' x 10' dock doors
- 1 - 12' x 14' grade level doors
- ESFR fire sprinklers
- 200 amps, 277/480 per bay
- Fenced truck court
- Approx. 1,500 sq. ft. Office
- \$.74 NNN



Building 2: 2350 W. Union Hills Drive 51,851 SF (Divisible)

- 24' clear height
- 10' x 10' dock doors
- 12' x 14' grade level doors
- 3 spec suites
- ESFR fire sprinklers
- 200 amps, 277/480 per bay
- Space from 4,700 SF
- Fenced truck court



● Truckwell (10' x 10') ▲ Grade Level (12' x 14')

MATT HOBAICA, SIOR
PRINCIPAL
602.954.3755
mhobaica@leearizona.com

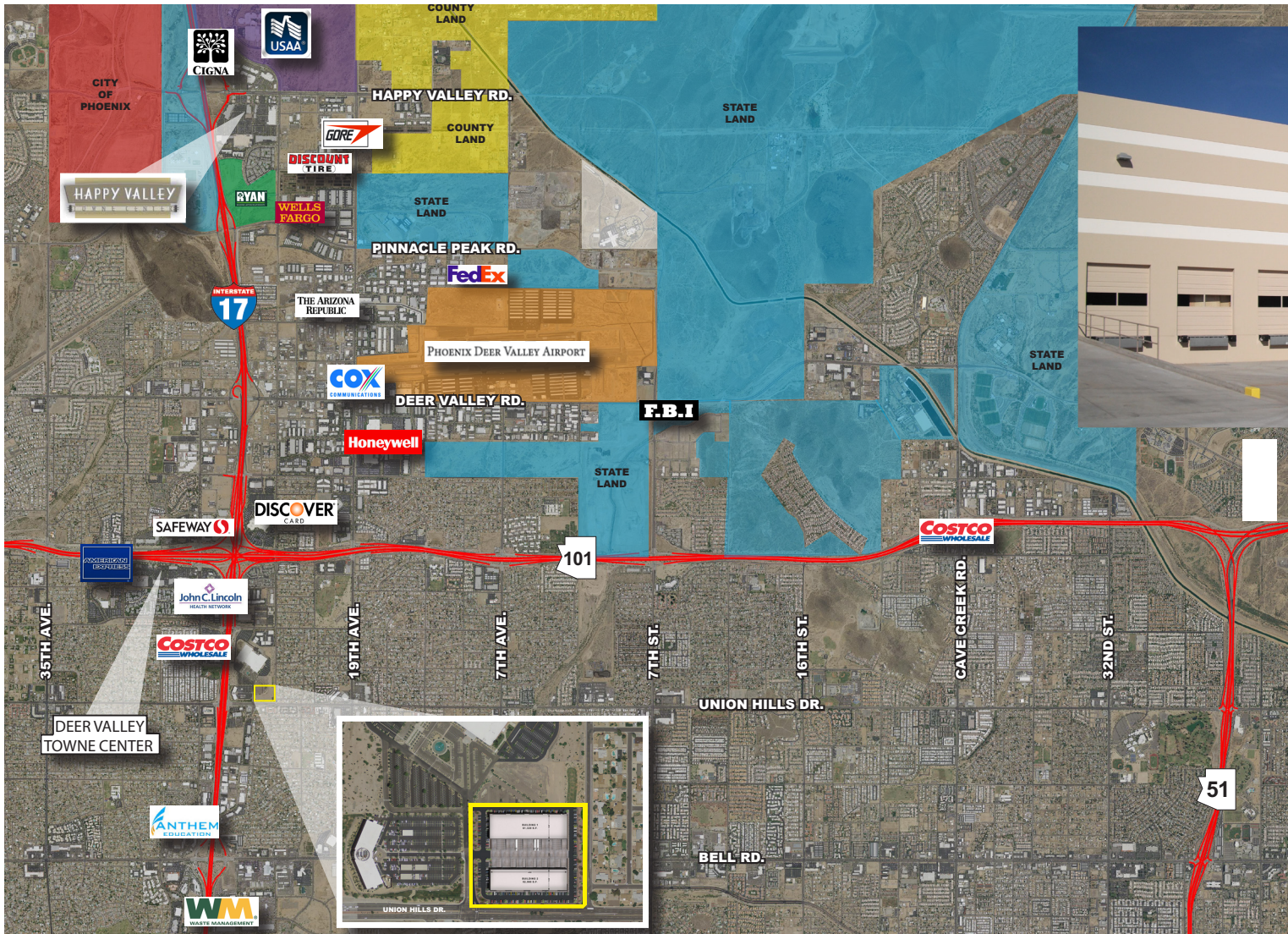
JEFF CONRAD, SIOR
PRINCIPAL
602.954.3743
jconrad@leearizona.com

LEE & ASSOCIATES
COMMERCIAL REAL ESTATE SERVICES



2350 & 2400 West Union Hills Drive Phoenix, AZ 85027

FOR LEASE



*17/Union Hills
Business Center
has Immediate
proximity
to the I-17 and
Loop 101*

All information furnished regarding property for sale, rental or financing is from sources deemed reliable, but no warranty or representation is made to the accuracy thereof and same is submitted to errors, omissions, change of price, rental or other conditions prior to sale, lease or financing or withdrawal without notice. No liability of any kind is to be imposed on the broker herein.

MATT HOBAICA, SIOR
PRINCIPAL
602.954.3755
mhobaica@learizona.com

JEFF CONRAD, SIOR
PRINCIPAL
602.954.3743
jconrad@learizona.com

LEE & ASSOCIATES
COMMERCIAL REAL ESTATE SERVICES

