

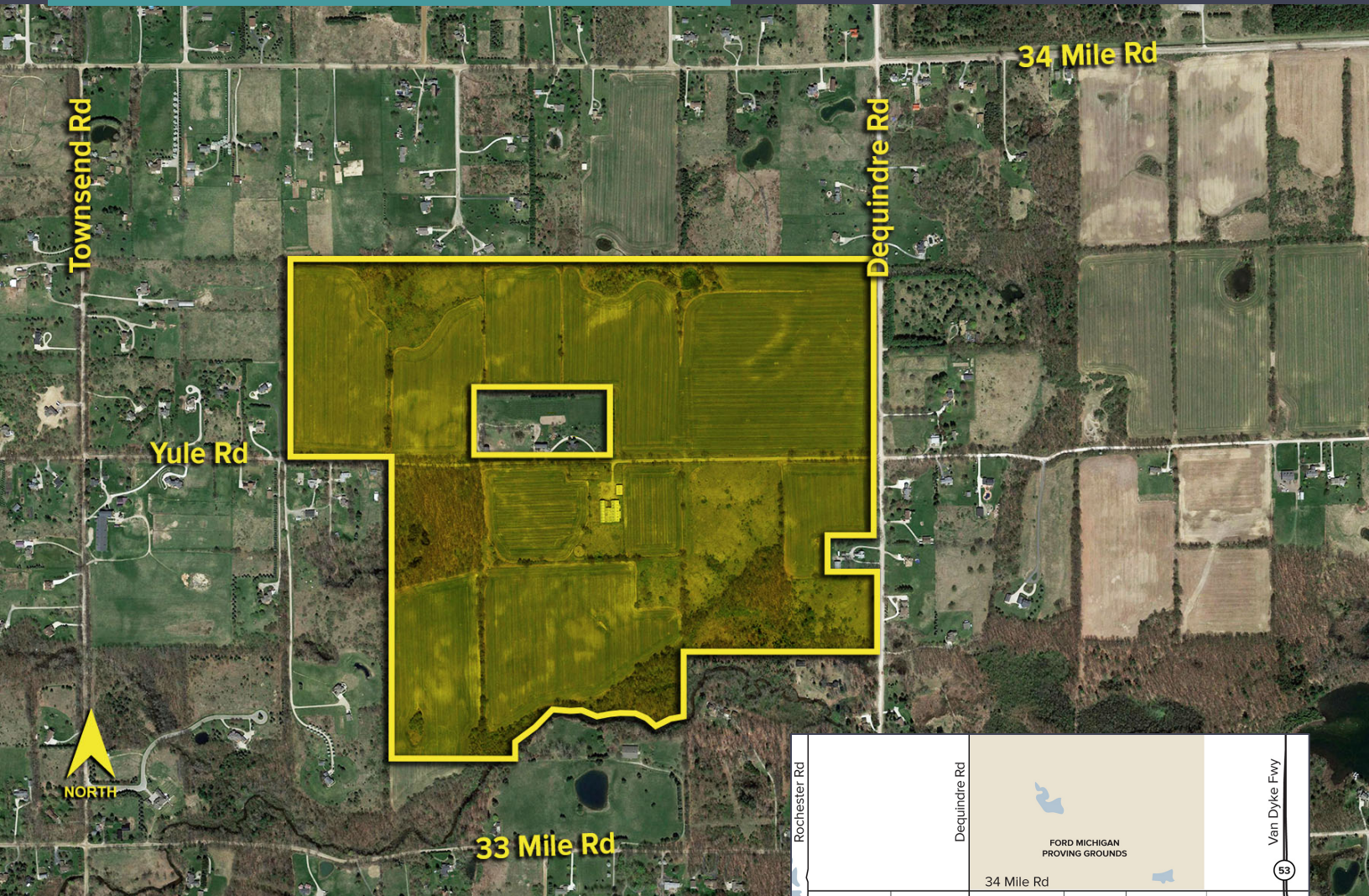
1650 YULE ROAD ADDISON TWP., MICHIGAN

AERES

SIGNATURE
ASSOCIATES

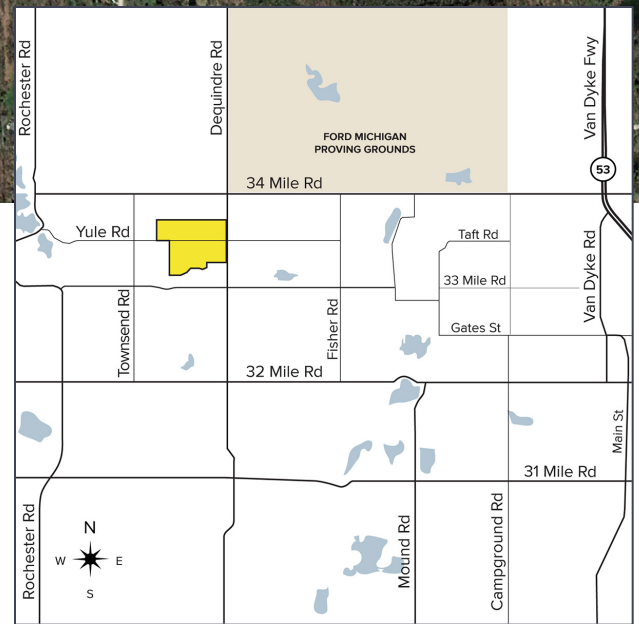
LAND FOR SALE
228.46 Acres Available

IDEAL FOR SINGLE-FAMILY FUTURE DEVELOPMENT



PROPERTY FEATURES

- 228.46 acres available
- Zoned residential & agricultural
- Beautiful property in northern Oakland County
- Ideal for single-family future development
- Sale Price: \$8,225,000 (\$36,001/acre)



For more information, please contact:

ANGELA THOMAS
ERICA DUNLAP
NICOLE VOISARD

(248) 799 3159
AERES@SIGNATUREASSOCIATES.COM

SIGNATURE ASSOCIATES
One Towne Square, Suite 1200
Southfield, MI 48076
www.signatureassociates.com