

KINGSGATE PLACE

12910 TOTEM LAKE BLVD NE | KIRKLAND, WA

FOR LEASE

12,406 SF
AVAILABLE

WELL LOCATED OFFICE BUILDING NEAR TOTEM LAKE RETAIL & EVERGREEN HOSPITAL



LEASE INFO

Available Size:	12,406 SF
Lease Rate:	\$32.00/SF/YR
Lease Type:	Full Service

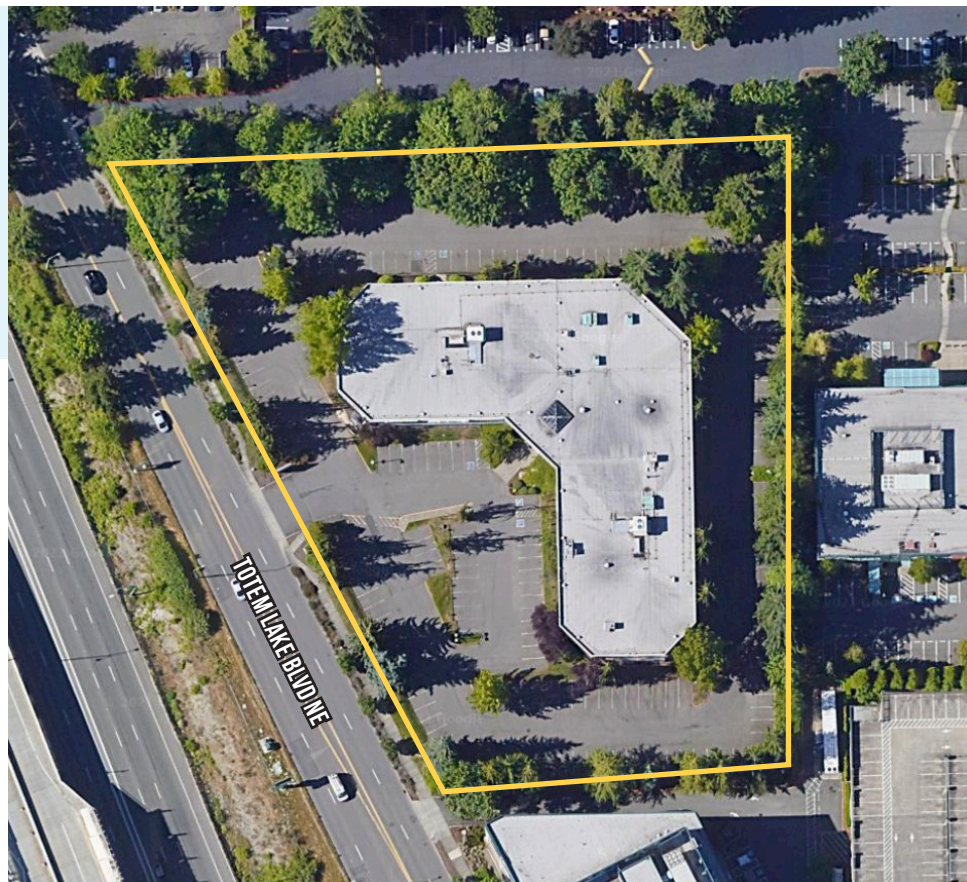
BRUCE VALENTINE

253.779.2400

bvalentine@neilwalter.com



All square footage references are approximate. The information contained herein is from sources deemed reliable. Prospective Buyer or Tenant should conduct an independent investigation and verification of all matters.

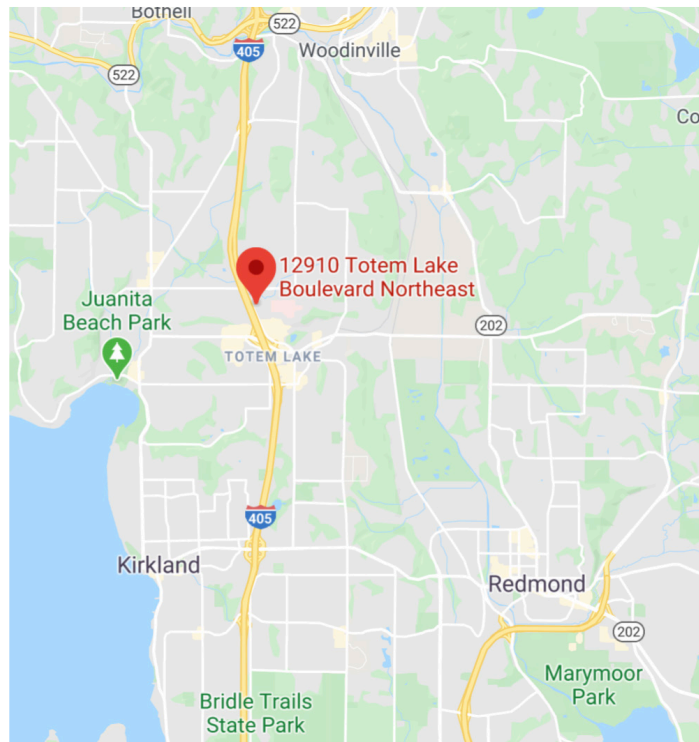


KINGSGATE PLACE



12910 TOTEM LAKE BLVD NE | KIRKLAND, WA

NEIL WALTER
COMPANY



PROPERTY FEATURES



Medical/Office Space



Excellent Visibility



Custom Tenant Improvements Available



Recently Renovated Restrooms and Common Areas



Free Parking



Shower Facilities



Easy Access to I-405



Building Signage Available

BRUCE VALENTINE
253.779.2400
bvalentine@neilwalter.com

All square footage references are approximate. The information contained herein is from sources deemed reliable. It is provided without representation, warranty or guarantee, expressed or implied as to its accuracy. Prospective Buyer or Tenant should conduct an independent investigation of all matters.

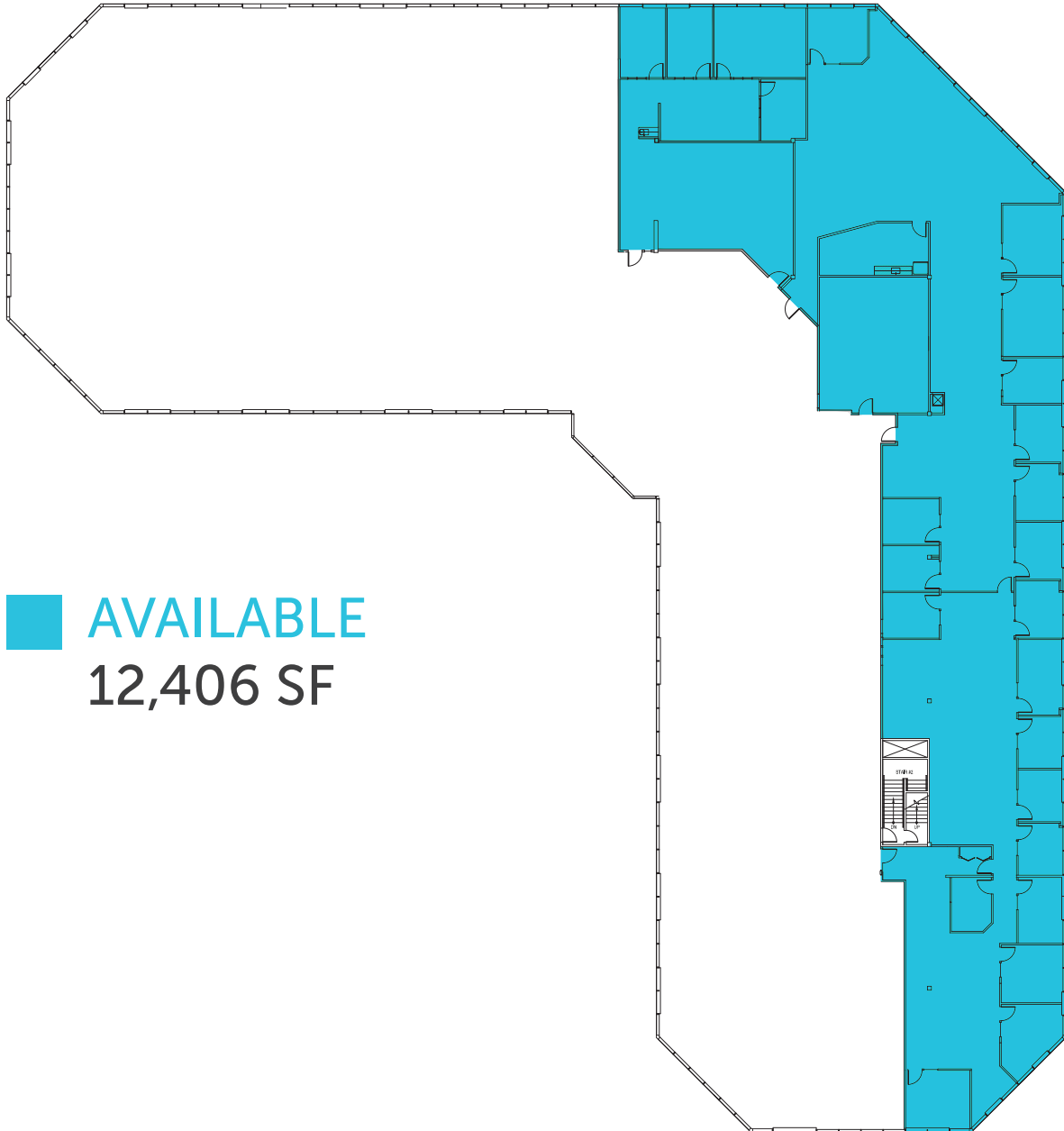
1940 East D St #100
Tacoma, WA 98421
253.779.8400
www.neilwalter.com

KINGSGATE PLACE

12910 TOTEM LAKE BLVD NE | KIRKLAND, WA



NEIL WALTER
C O M P A N Y



■ AVAILABLE
12,406 SF

BRUCE VALENTINE
253.779.2400
bvalentine@neilwalter.com

All square footage references are approximate. The information contained herein is from sources deemed reliable. It is provided without representation, warranty or guarantee, expressed or implied as to its accuracy. Prospective Buyer or Tenant should conduct an independent investigation of all matters.

1940 East D St #100
Tacoma, WA 98421
253.779.8400
www.neilwalter.com