

# DESERT VISTA COMMERCE CENTER



FOR LEASE

7810, 7850, 7890 S HARDY DRIVE, TEMPE, AZ

## FOR MORE INFORMATION:

Aric Adams  
o. 602.513.5119  
aadams@kiddermathews.com

Mike Kasualitis  
o. 602.513.5111  
mikek@kiddermathews.com

Kidder Mathews  
2555 E Camelback Rd, St. 100  
Phoenix, AZ  
www.kiddermathews.com

## PROPERTY FEATURES

- » Corporate image
- » Excellent signage off Hardy Drive
- » Office and flexible industrial space
- » 4/1,000 SF parking, covered parking available
- » Immediate retail amenities nearby
- » Convenient access to I-10, 101, 202, and US 60 freeways
- » Spec suites ready for immediate occupancy



The information contained herein is believed to be accurate but is not warranted as to its accuracy and may change or be updated without notice. Seller or landlord makes no representation as to the environmental condition of the property and recommends purchaser's or tenant's independent investigation.

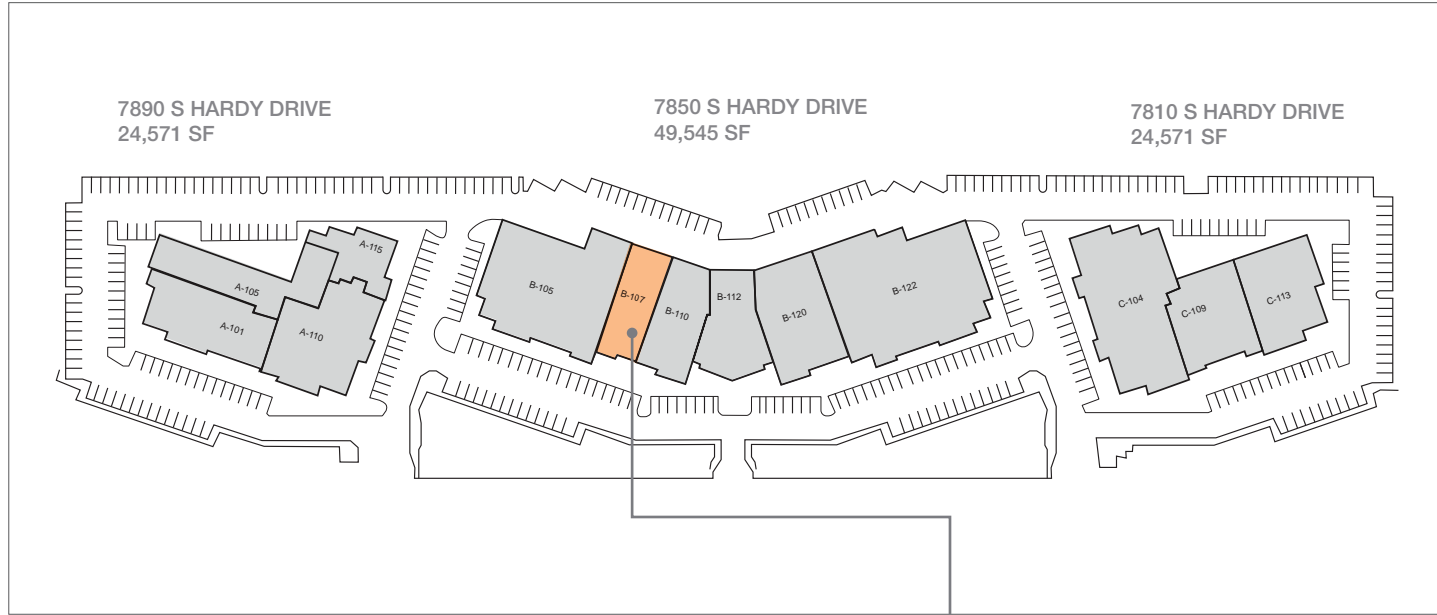
**km** Kidder  
Mathews



# DESERT VISTA COMMERCE CENTER

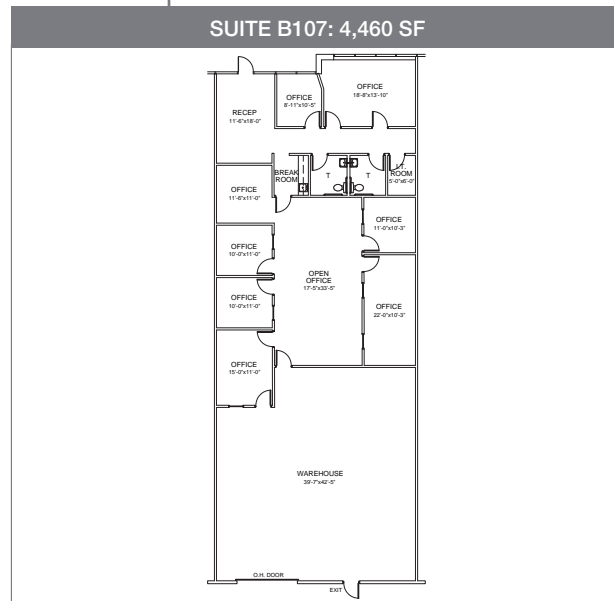
## SITE PLAN

■ AVAILABLE
 ■ OCCUPIED



### AVAILABILITIES

<b>BUILDING</b>	7850
<b>SUITE</b>	B107
<b>TOTAL SF</b>	4,460
<b>OFFICE %</b>	70%



### FOR MORE INFORMATION

**Aric Adams**  
 o. 602.513.5119  
[aadams@kiddermathews.com](mailto:aadams@kiddermathews.com)

**Mike Kasualitis**  
 o. 602.513.5111  
[mikek@kiddermathews.com](mailto:mikek@kiddermathews.com)

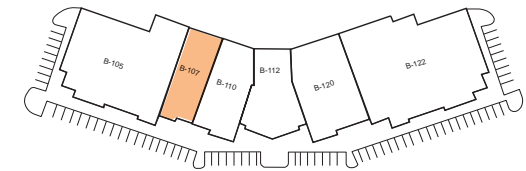
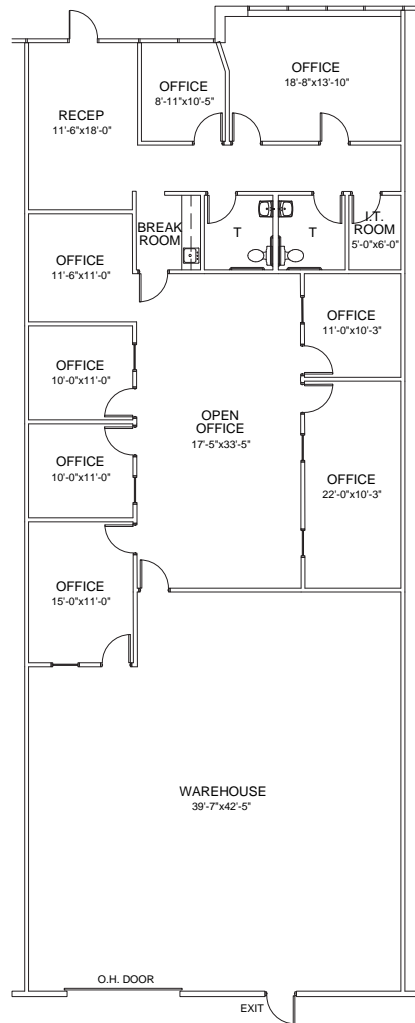
**KIDDER MATHEWS**  
 2555 E CAMELBACK RD, ST 100  
 PHOENIX, AZ



# DESERT VISTA COMMERCE CENTER

## SITE PLAN

BUILDING 7850 | SUITE B107: 4,460 SF



### FOR MORE INFORMATION:

Aric Adams  
o. 602.513.5119  
c. 602.828.4104  
aadams@kiddermathews.com

Mike Kasulaitis  
o. 602.513.5111  
c. 602.769.2302  
mikek@kiddermathews.com

KIDDER MATHEWS  
2555 E CAMELBACK RD, ST 100  
PHOENIX, AZ

**km** Kidder  
Mathews



# DESERT VISTA COMMERCE CENTER

## AMENITIES AERIAL



### FOR MORE INFORMATION:

Aric Adams  
o. 602.513.5119  
c. 602.828.4104  
aadams@kiddermathews.com

Mike Kasulaitis  
o. 602.513.5111  
c. 602.769.2302  
mikek@kiddermathews.com

KIDDER MATHEWS  
2555 E CAMELBACK RD, ST 100  
PHOENIX, AZ

**km** Kidder  
Mathews



# DESERT VISTA COMMERCE CENTER



## FOR MORE INFORMATION:

Aric Adams  
o. 602.513.5119  
c. 602.828.4104  
aadams@kiddermathews.com

Mike Kasulaitis  
o. 602.513.5111  
c. 602.769.2302  
mikek@kiddermathews.com

KIDDER MATHEWS  
2555 E CAMELBACK RD, ST 100  
PHOENIX, AZ

**km** Kidder  
Mathews

