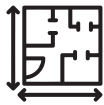


1715 Lake Drive West Chanhassen, MN 55317



FEATURES



1,701 square foot
office space



Convenient
parking



Prominent Chanhassen
location with excellent access to
US 212 and Highway 5



Convenient location near
numerous restaurants, banks
and other retail services

For Leasing Information Contact Ryan Stinson at 612-220-4335

1715 Lake Drive West Chanhassen, MN 55317

OVERVIEW

GENERAL OVERVIEW

Space: 1,701 sq ft

Building Class: A

Building Height: One (1) Floor

Zoning: Planned Industrial District

Ceiling Height: 18' Clear Warehouse / 9' Office

Parking: 60 Spaces

Intersection: Lake Drive West

Year Built: 1998

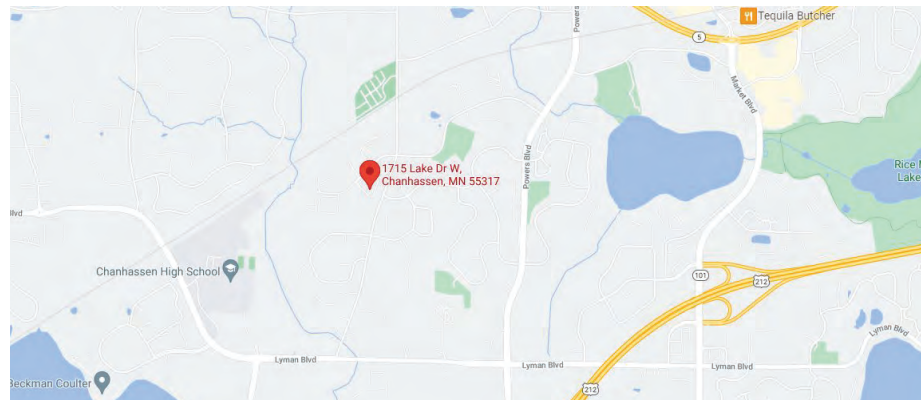
CONSTRUCTION OVERVIEW

Foundation: Concrete Block

Frame: Steel Masonry with Concrete Block

Roof Structure: Built-up Roofing

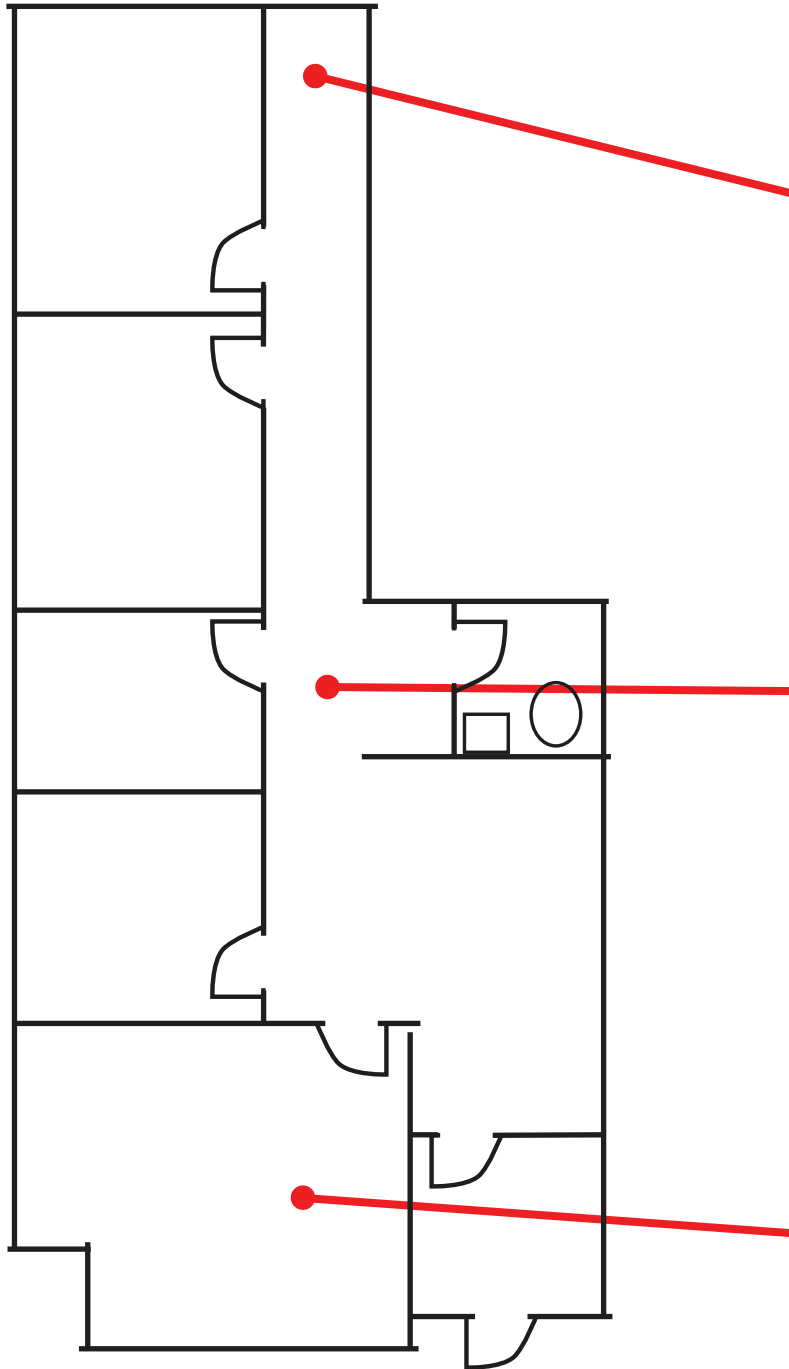
Air Conditioning: Finished Areas Only



For Leasing Information Contact Ryan Stinson at 612-220-4335

1715 Lake Drive West Chanhassen, MN 55317

LAYOUT



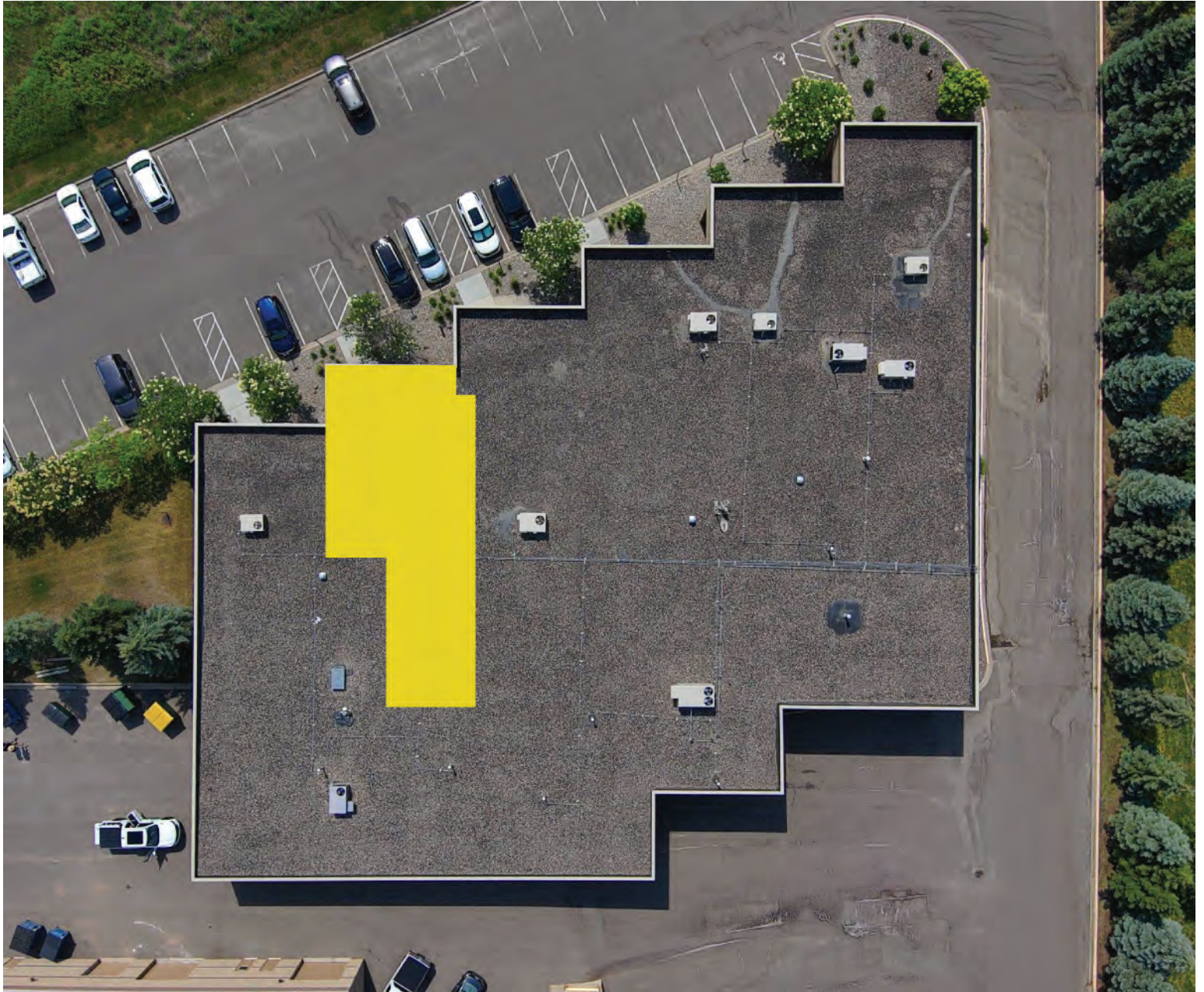
Front Entrance



For Leasing Information Contact Ryan Stinson at 612-220-4335

**1715 Lake Drive West
Chanhassen, MN 55317**

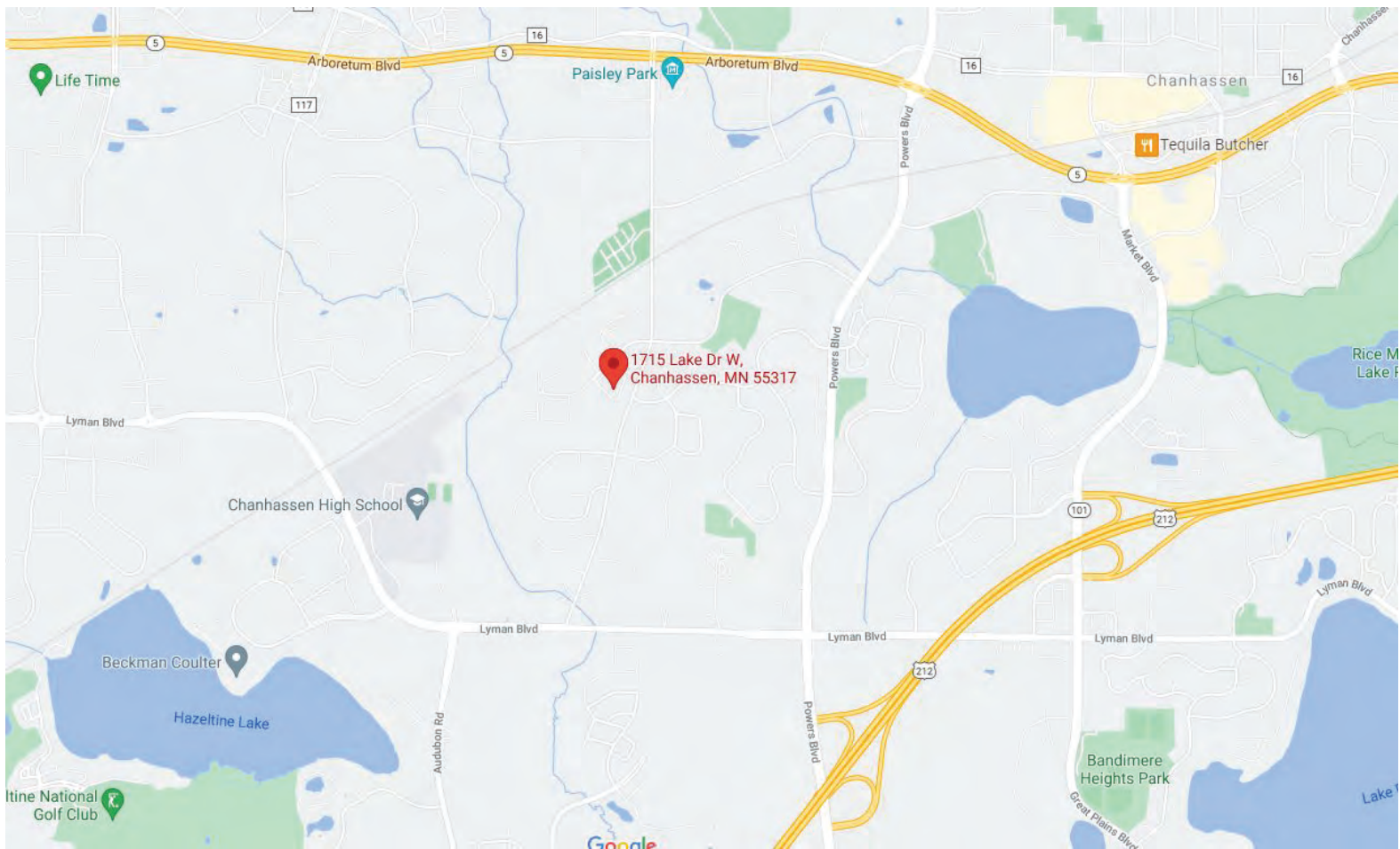
BUILDING



For Leasing Information Contact Ryan Stinson at 612-220-4335

1715 Lake Drive West Chanhassen, MN 55317

LOCATION



For Leasing Information Contact Ryan Stinson at 612-220-4335