



FOR SALE

**4020 Meadows Parkway**  
Indianapolis, IN 46205



### Property Highlights

- ± 49,674 sf campus on ± 3.00 acres
- ± 134 parking spaces
- Move-in ready
- Expandable
- State-of-the-art facility built in 2013 for Tindley Collegiate Academy
- Minutes from the Keystone Corridor, Binford Boulevard, SoBro and Indiana State Fairgrounds
- Ideal for a church, school, non-profit or education campus
- \$4,950,000

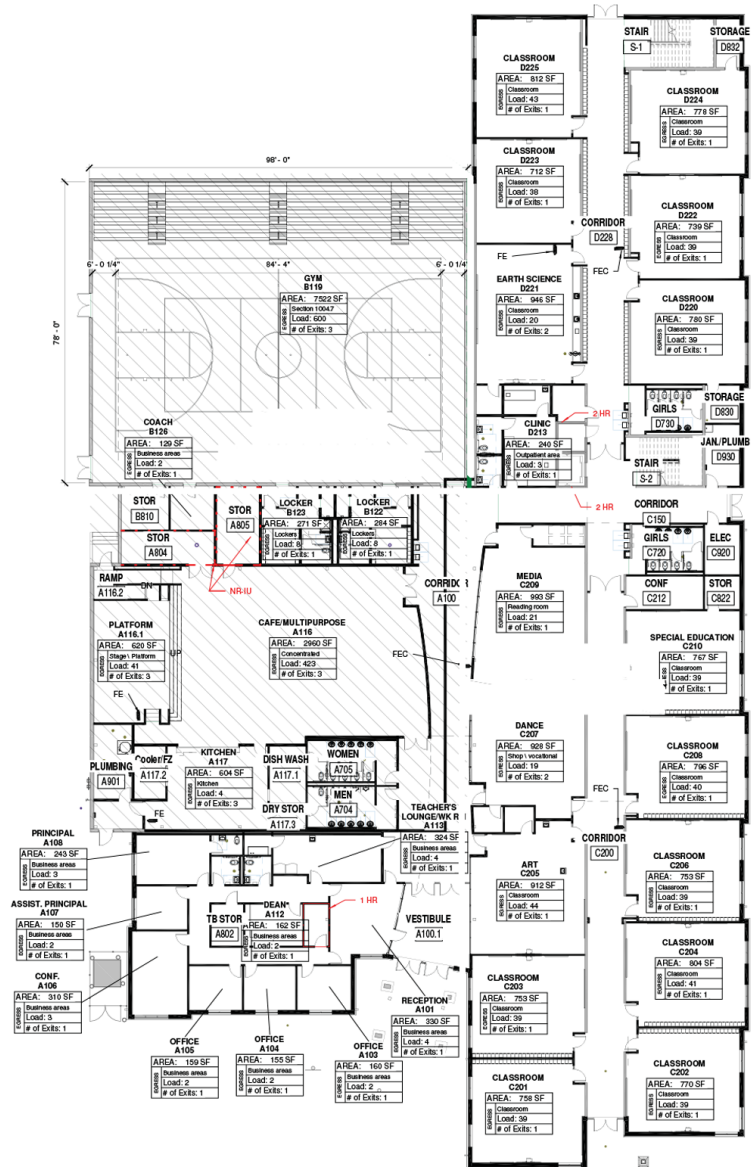
©2019 Cushman & Wakefield. All rights reserved. The information contained in this communication is strictly confidential. This information has been obtained from sources believed to be reliable but has not been verified. NO WARRANTY OR REPRESENTATION, EXPRESS OR IMPLIED, IS MADE AS TO THE CONDITION OF THE PROPERTY (OR PROPERTIES) REFERENCED HEREIN OR AS TO THE ACCURACY OR COMPLETENESS OF THE INFORMATION CONTAINED HEREIN, AND SAME IS SUBMITTED SUBJECT TO ERRORS, OMISSIONS, CHANGE OF PRICE, RENTAL OR OTHER CONDITIONS, WITHDRAWAL WITHOUT NOTICE, AND TO ANY SPECIAL LISTING CONDITIONS IMPOSED BY THE PROPERTY OWNER(S). ANY PROJECTIONS, OPINIONS OR ESTIMATES ARE SUBJECT TO UNCERTAINTY AND DO NOT SIGNIFY CURRENT OR FUTURE PROPERTY PERFORMANCE.



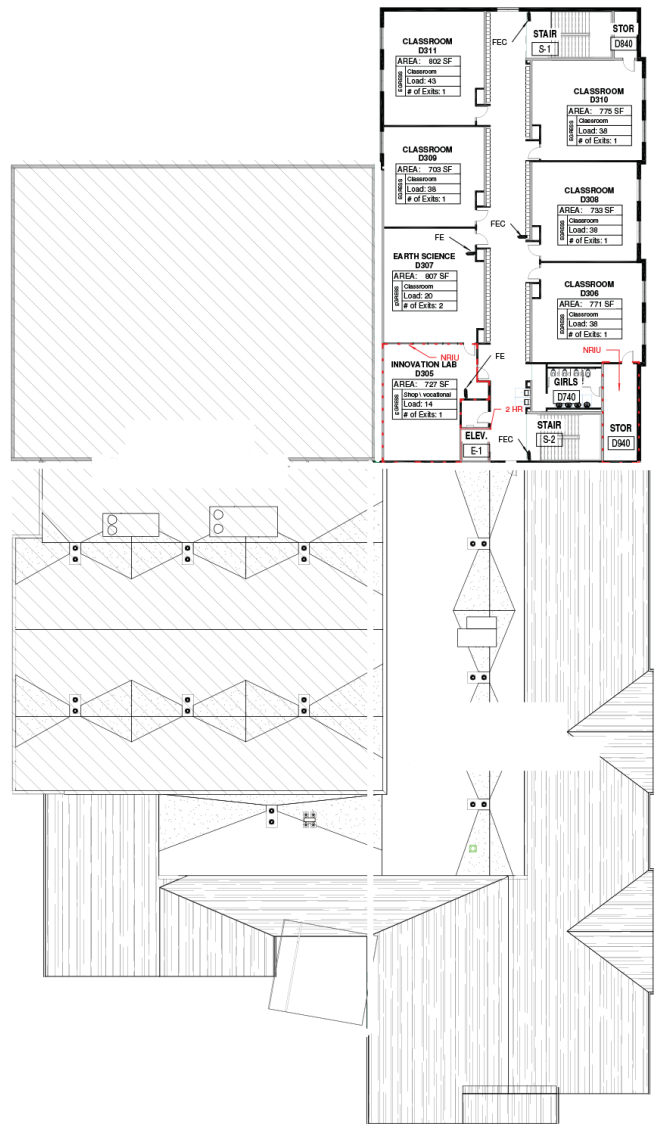




**Floorplans**



**1st Floor**



**2nd Floor**



FOR SALE

4020 Meadows Parkway

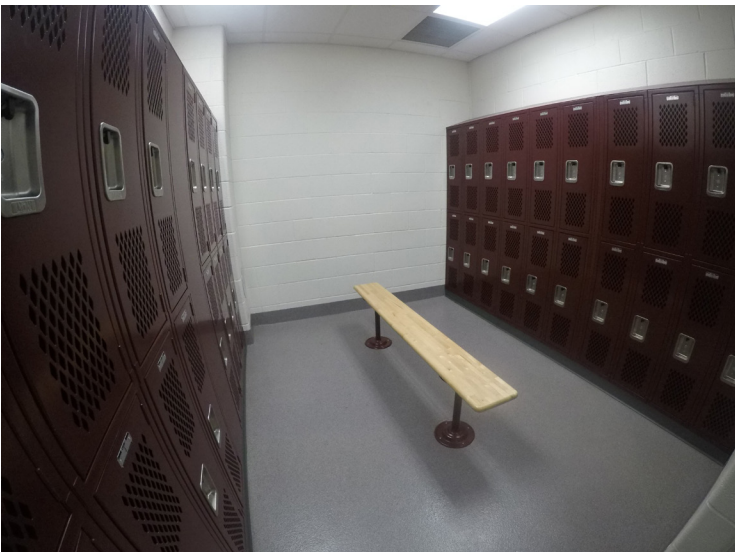
Indianapolis, IN 46205



Clinic



Student Hallway & Lockers



Sports Locker Rooms



Commercial Kitchen





FOR SALE

4020 Meadows Parkway

Indianapolis, IN 46205



Fitness/Dance



Classroom



Main Entry



Main Hallway



FOR SALE

4020 Meadows Parkway

Indianapolis, IN 46205



Gymnasium



Science Lab



Reception



Cafe/Multi-Purpose Room





**CUSHMAN &  
WAKEFIELD**

FOR SALE

**4020 Meadows Parkway**

Indianapolis, IN 46205



**Darrin L. Boyd, SIOR, CCIM**  
+1 317 590 8490  
darrin.boyd@cushwake.com

**David A. Moore, SIOR, CCIM**  
+1 317 639 0490  
david.moore@cushwake.com

**cushmanwakefield.com**  
**IndyOfficeSpace.com**

©2019 Cushman & Wakefield. All rights reserved. The information contained in this communication is strictly confidential. This information has been obtained from sources believed to be reliable but has not been verified. NO WARRANTY OR REPRESENTATION, EXPRESS OR IMPLIED, IS MADE AS TO THE CONDITION OF THE PROPERTY (OR PROPERTIES) REFERENCED HEREIN OR AS TO THE ACCURACY OR COMPLETENESS OF THE INFORMATION CONTAINED HEREIN, AND SAME IS SUBMITTED SUBJECT TO ERRORS, OMISSIONS, CHANGE OF PRICE, RENTAL OR OTHER CONDITIONS, WITHDRAWAL WITHOUT NOTICE, AND TO ANY SPECIAL LISTING CONDITIONS IMPOSED BY THE PROPERTY OWNER(S). ANY PROJECTIONS, OPINIONS OR ESTIMATES ARE SUBJECT TO UNCERTAINTY AND DO NOT SIGNIFY CURRENT OR FUTURE PROPERTY PERFORMANCE.