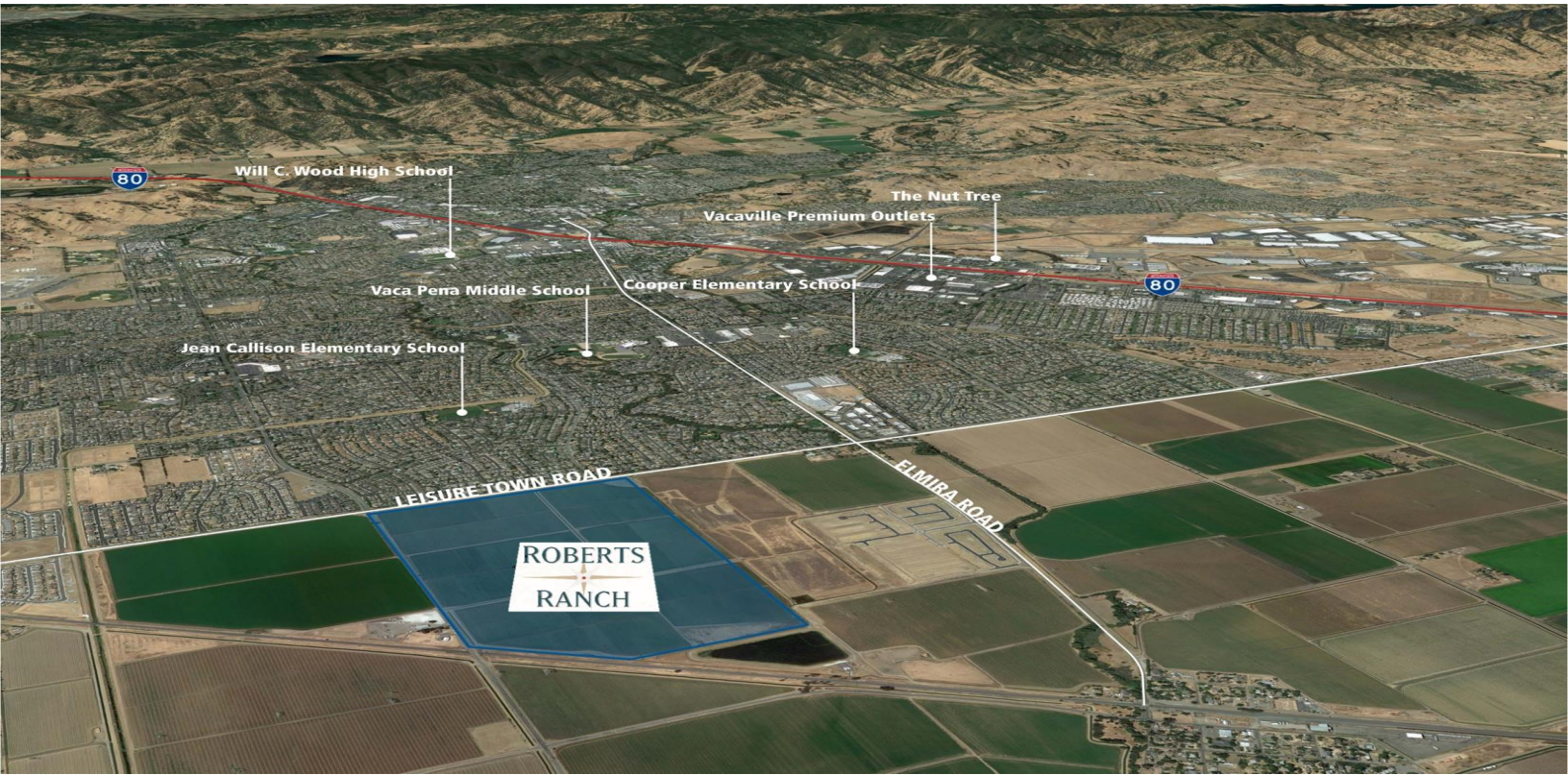


# ROBERT'S RANCH

Vacaville, CA



## PROPERTY OVERVIEW

Robert's Ranch is a 248-acre master planned community within the East of Leisure Town Growth Area in the City of Vacaville. This offering includes only Villages A, B, C, and D. This community will offer a variety of housing choices within a planned system of parks and trails providing connections throughout the project, with a buffer sensitive to nearby agriculture. Robert's Ranch intends to set the standard for high quality community design and livability for the City of Vacaville.

- Robert's Ranch is entitled for 274 of primarily low density, single family homes with lot sizes that can accommodate large single story homes.
- Street sections will have enhanced parkways and sidewalks in strategic locations to create a linked network of parks and open space at a local level, with further connections to trail systems throughout the City of Vacaville.
- There is a planned park and school site within the Robert's Ranch Specific Plan Area.

## QUICK FACTS

PROJECT SIZE	274 Large, SFD Lots
ENTITLEMENTS	Vesting TTM
SITE CONDITION	Unimproved
OFFERS DUE	Submit Offer



[VIEW MAP](#)



[REQUEST MORE INFO](#)

Ryan Long | [rlong@landadvisors.com](mailto:rlong@landadvisors.com)  
3741 Douglas Boulevard, Suite 180, Roseville, California 95661 | 916.784.3329 | [www.landadvisors.com](http://www.landadvisors.com)

The information contained herein is from sources deemed reliable. We have no reason to doubt its accuracy but do not guarantee it. It is the responsibility of the person reviewing this information to independently verify it. This flyer is subject to change, prior sale or complete withdrawal. CalBRE#01225173

