



OFFICE SPACE FOR LEASE

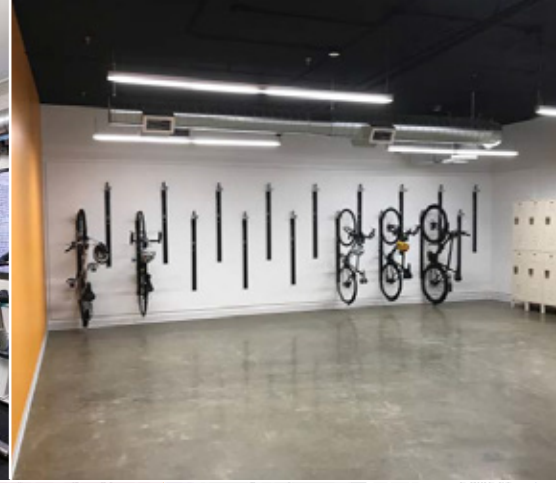
Seattle Tower

Character without compromise

Seattle Tower is a unique, historic Class A high-rise office building located in the center of downtown. The building's Art Deco design, choice location, sweeping views of Puget Sound, and other desirable amenities attract an energetic mix of office tenants.

1218 Third Avenue | Seattle, WA 98101





BUILDING FEATURES

HISTORIC CHARACTER AND QUALITY FEATURES

Seattle Tower is one of Seattle's most architecturally significant historic buildings. It boasts a stunning lobby with vaulted ceilings, marble floors and ornate bronze details throughout.

TRANSIT ACCESS

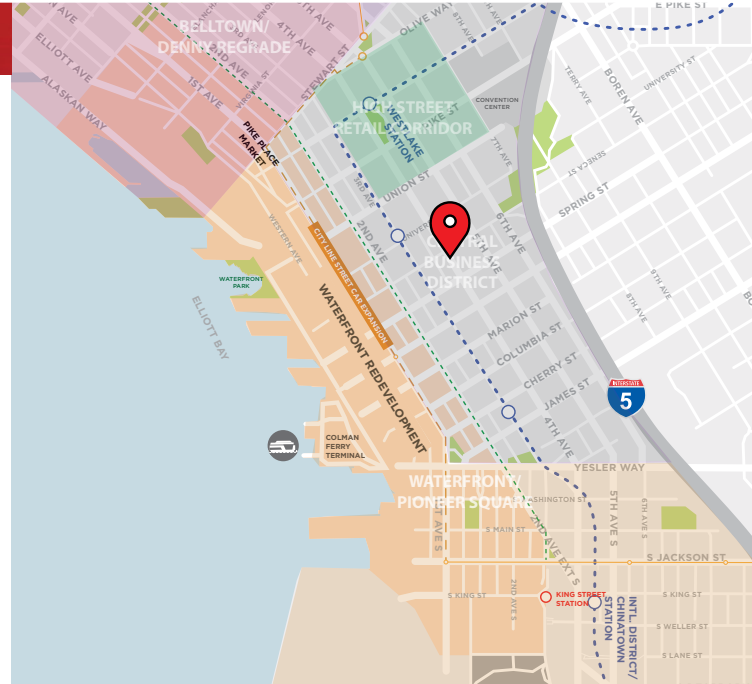
Two minutes to the I-5 and I-90 on-ramps, and across the street from University Street Station serving light rail and Metro buses. Only blocks away from the Colman Ferry Terminal and future First Avenue streetcar.

“WALKER’S PARADISE”

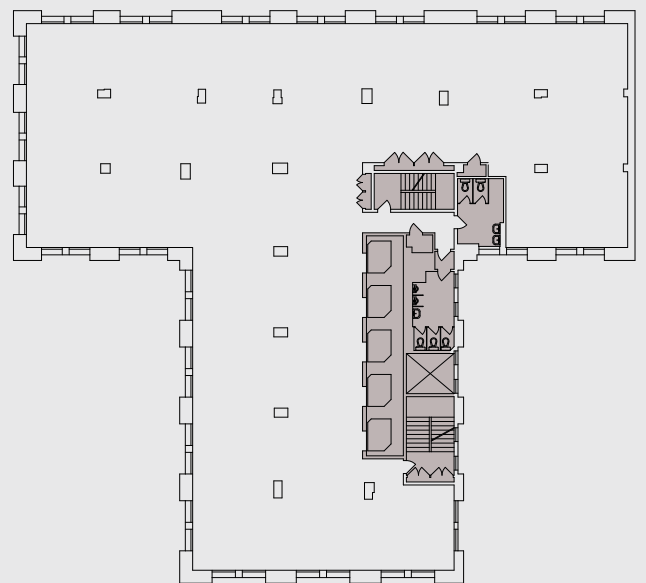
99 walk score — close to dozens of quality restaurants, including The Capital Grille, Shuckers, Purple Cafe & Wine Bar, SAM Taste, and Pike Place Market, with Pegasus Coffee and World Fresh Market in the Building.

NEW AMENITIES

Brand new common area improvements include multiple meeting spaces, tenant lounge, bike room, updated lighting and modern glass entryways, and a fully-equipped fitness center with lockers and showers.



FLOOR PLAN



CONTACT

Cleita Harvey
+1 206 607 1794
cleita.harvey@am.jll.com

Kathryn Pope
+1 206 607 1720
kathryn.pope@am.jll.com

Jones Lang LaSalle Brokerage, Inc.

DISCLAIMER © 2020 Jones Lang LaSalle IP, Inc. All rights reserved. All information contained herein is from sources deemed reliable; however, no representation or warranty is made to the accuracy thereof.



jll.com/seattle