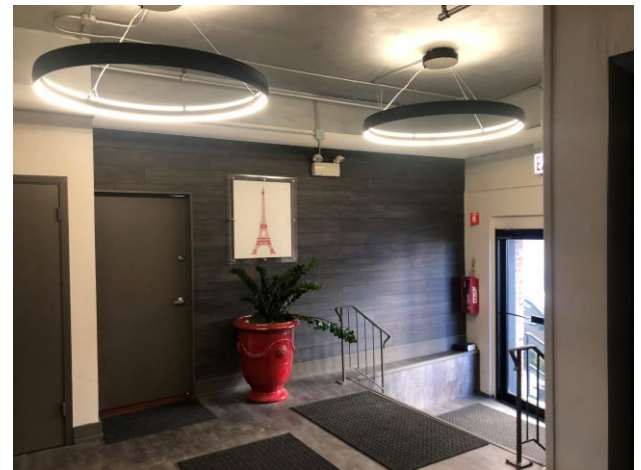
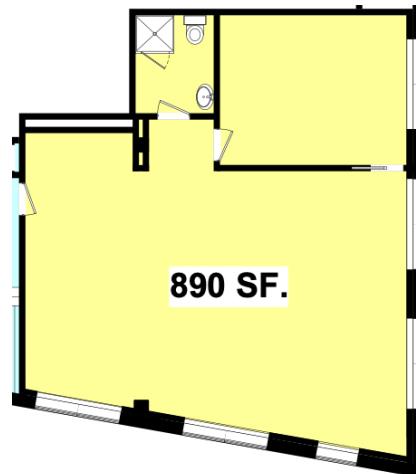


FOR LEASE

Loft Office Space

1529 W. Armitage Ave - Lincoln Park

CHICAGO, IL 60642



For more information
please contact:

David Schraufnagel
(773) 430 - 6406
david@garrettrealtyinc.com

Garrett Realty & Development, Inc.
2211 N. Elston Avenue, Ste. 308
Chicago, Illinois 60614

www.garrettrealtyinc.com

The information contained herein has been obtained from sources deemed reliable and is subject to errors, omissions, changes in price or terms and prior sale, lease or withdrawal from the market at any time without prior notice.



HIGHLIGHTS

- Size:** Approximately 890 RSF
- Rate:** \$1,850 per RSF, Gross
- Details:**
- Located in Chicago's Lincoln Park Neighborhood, just one block from Kennedy Expressway (90/94) And (Clybourn) Metra Stop. Adjacent to the new Lincoln Yards development
 - High loft ceilings, big windows, exposed ductwork
 - Open space with 1 private office and private restroom
 - Available Immediately