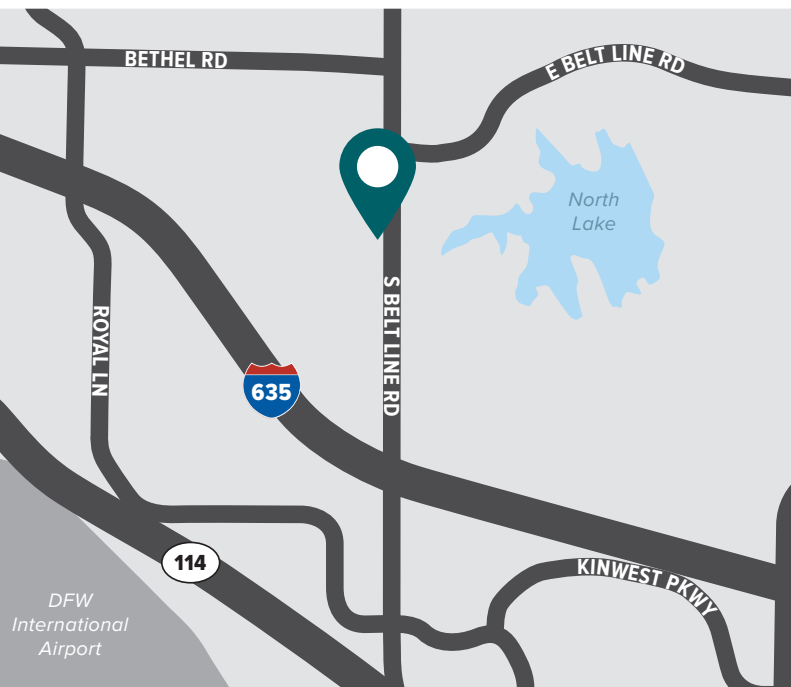


# LAKEVIEW CENTER I

1199 S Belt Line, Coppell, Texas 75019



## LAKEVIEW CENTER I

is situated in Coppell on Belt Line Rd, near the Lyndon B Johnson Fwy (I-635). The campus style office complex features tall ceilings with full height glass, 5.0:1,000 surface parking, and convenient access to the residential, hospitality, and retail in the surrounding neighborhood.

For more information, please contact:

**CHASE LOPEZ**

clopez@streamrealty.com  
214.267.0465

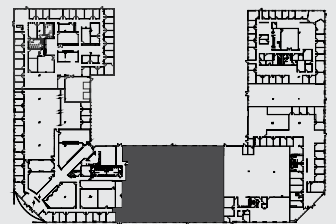
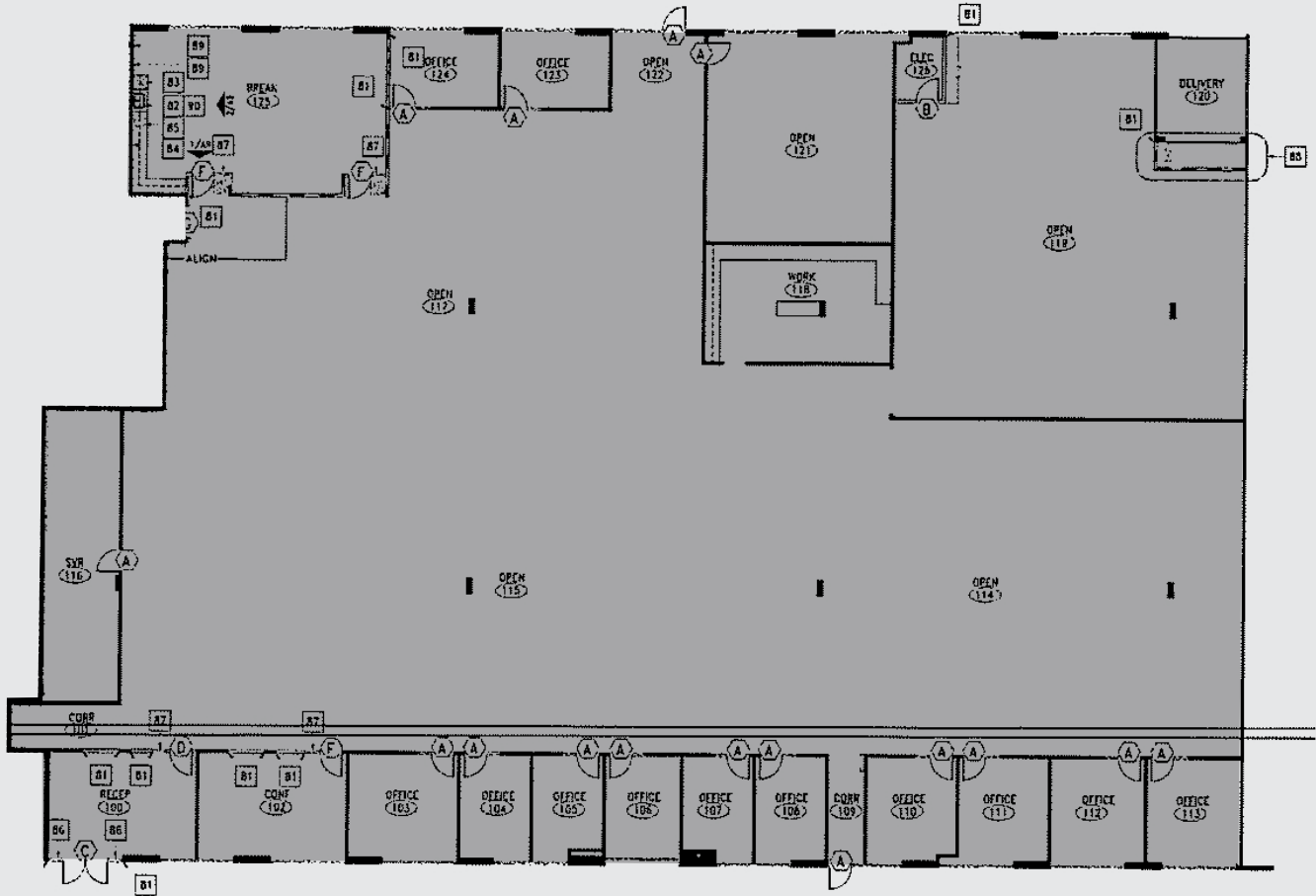
**RHETT MILLER**

rhett.miller@streamrealty.com  
214.267.0411





# SUITE 105: 18,312 SF



For more information, please contact:

**CHASE LOPEZ**

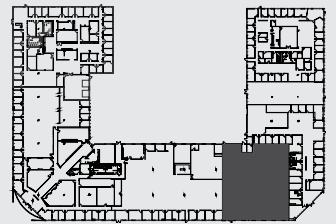
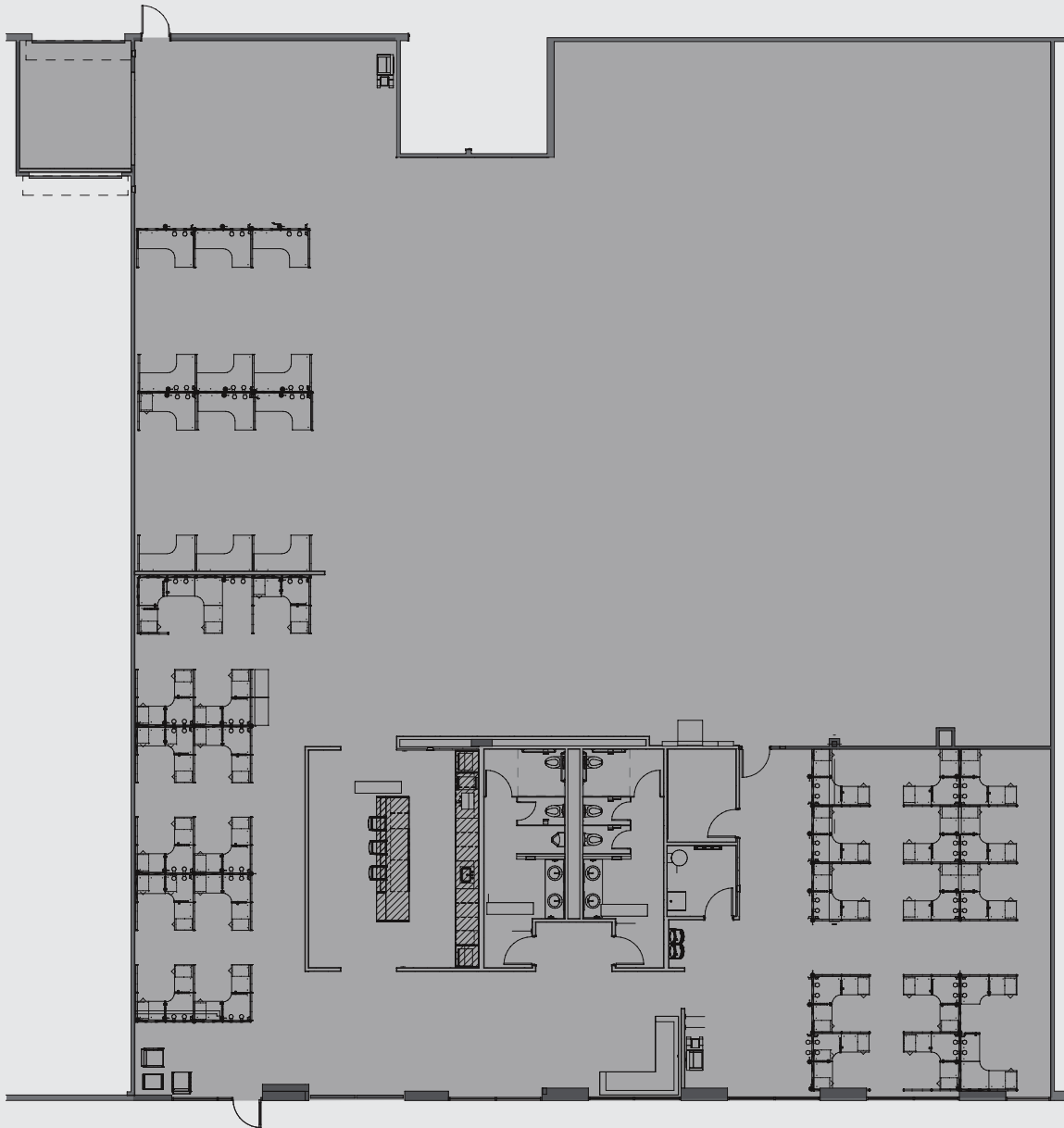
clopez@streamrealty.com  
214.267.0465

**RHETT MILLER**

rhett.miller@streamrealty.com  
214.267.0411

**STREAM**  
www.streamrealty.com

**SUITE 110: 10,082 SF**  
(available until December 2021)



For more information, please contact:

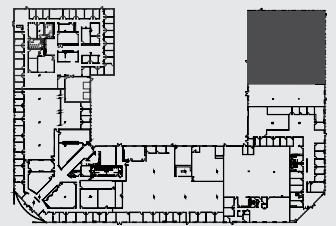
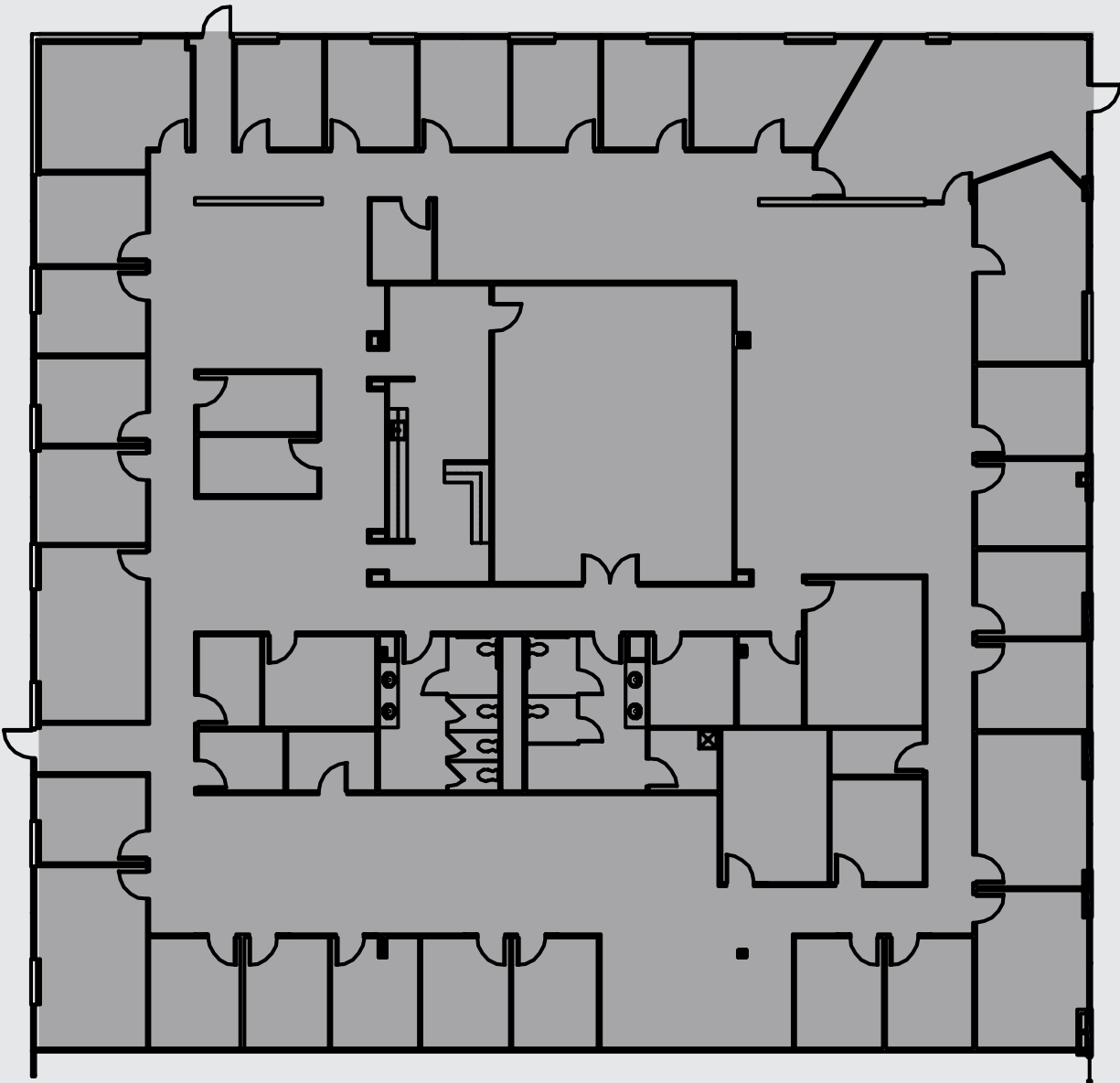
**CHASE LOPEZ**

clopez@streamrealty.com  
214.267.0465

**RHETT MILLER**

rhett.miller@streamrealty.com  
214.267.0411

**SUITE 160: 12,570 SF**



For more information, please contact:

**CHASE LOPEZ**

clopez@streamrealty.com  
214.267.0465

**RHETT MILLER**

rhett.miller@streamrealty.com  
214.267.0411

YEAR  
BUILT  
**1999**

CAMPUS  
SIZE  
**101,429 SF**

CEILING  
HEIGHT  
**11-18 FT**

PARKING  
**5.0:1,000**  
SURFACE

MAX CONTIGUOUS  
AVAILABLE  
**28,394 SF**



For more information, please contact:

**CHASE LOPEZ**  
clopez@streamrealty.com  
214.267.0465

**RHETT MILLER**  
rhatt.miller@streamrealty.com  
214.267.0411

**STREAM**  
www.streamrealty.com

# INGRESS / EGRESS



# CENTRAL LOCATION



## FACT SHEET

### **BUILDING**

1199 S Belt Line Rd  
Coppell, TX 75019

### **OWNER/ LANDLORD**

1199 S. Belt Line, Inc.

### **LEASING COMPANY**

#### **Stream Realty**

Chase Lopez  
214.267.0465  
clopez@streamrealty.com

Rhett Miller  
214-267-0411  
rhett.miller@streamrealty.com

### **MANAGEMENT COMPANY**

Austin Industries

### **BUILDING AREA**

101,429 SF

### **YEAR BUILT**

1999

### **FLOOR SIZES**

11' to 14' (Floor-to-Ceiling Heights)  
18' (Floor-to-Deck Heights)

### **ELECTRICAL**

280/120 Volts (3 Phase) – Max. 480/277

### **HVAC**

Roof Top Units

### **PARKING**

5.0:1,000

### **ELECTRICITY ESTIMATES**

\$1.50/sf

### **NNN ESTIMATES**

\$5.15 SF

### **TELECOM**

Spectrum  
Logix

For more information, please contact:

#### **CHASE LOPEZ**

clopez@streamrealty.com  
214.267.0465

#### **RHETT MILLER**

rhett.miller@streamrealty.com  
214.267.0411