



# THE OFFICES AT RIVERPARK

a **KBS** property

FOR LEASE



15809 BEAR CREEK PARKWAY | REDMOND, WA 98052

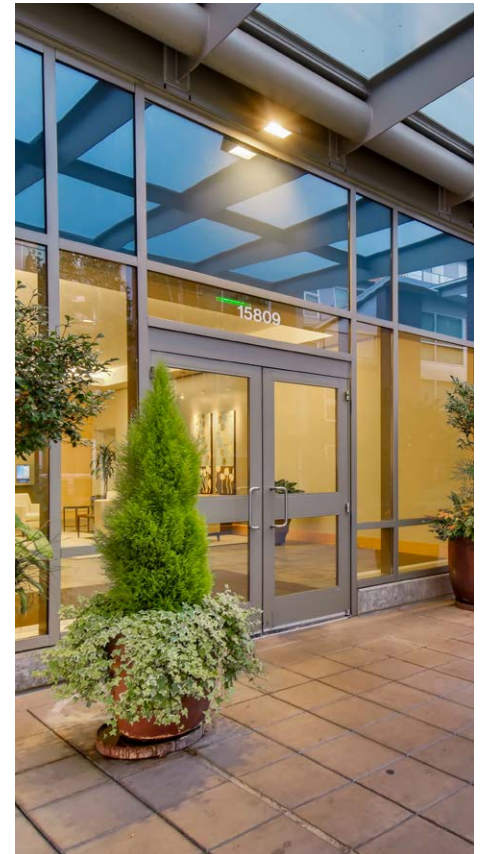
Proudly leased  
and managed by

**CBRE**



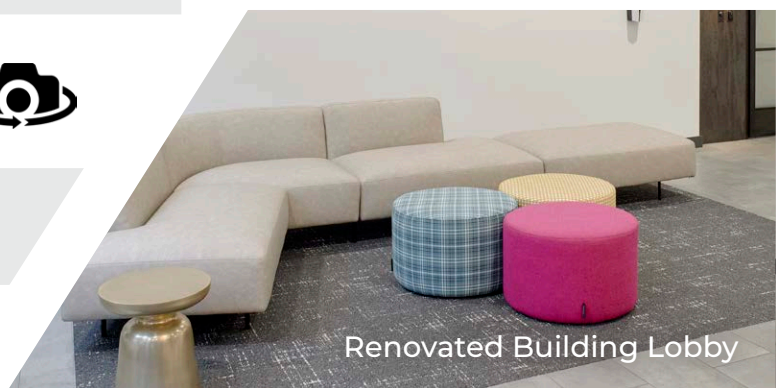
# BUILDING DETAILS

Building Size	±107,029 RSF Class A Office Building
Green Construction	LEED Silver Certified, Energy Star Rated & Verified-Healthy Building for Indoor Air
Parking	3.0/1,000 RSF of covered parking at \$75.00/stall/month
2022 Estimated Operating Expenses	\$13.46/RSF
Light Rail	Walking distance to the Downtown Redmond Light Rail Station opening in 2024
Building Improvements	New Tenant Amenity Center Renovated Building Lobby



# AVAILABLE SPACE

Suite 310 : Market Ready Suite	4,538 RSF Available Now	
Suite 330 : Market Ready Suite	4,427 RSF Available Now	
Suite 400:	14,848 RSF Available September 1, 2022	

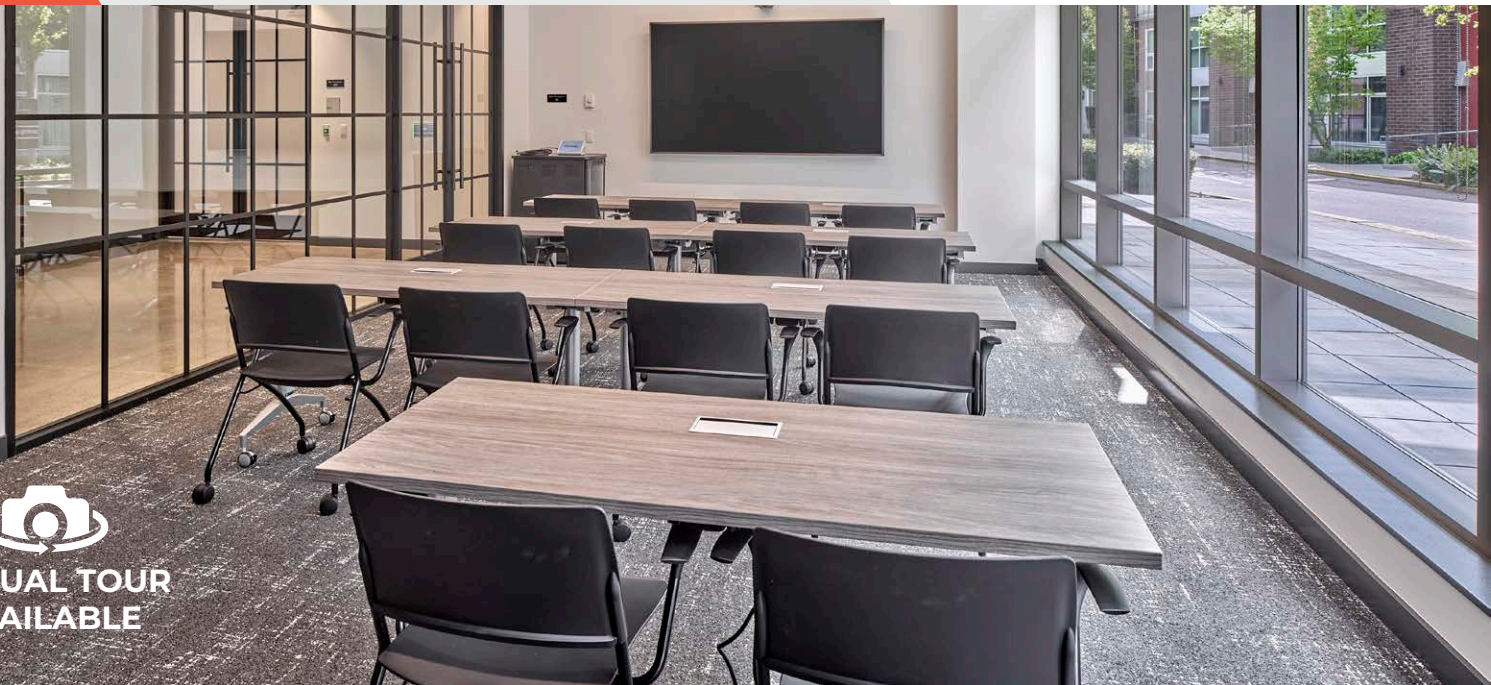
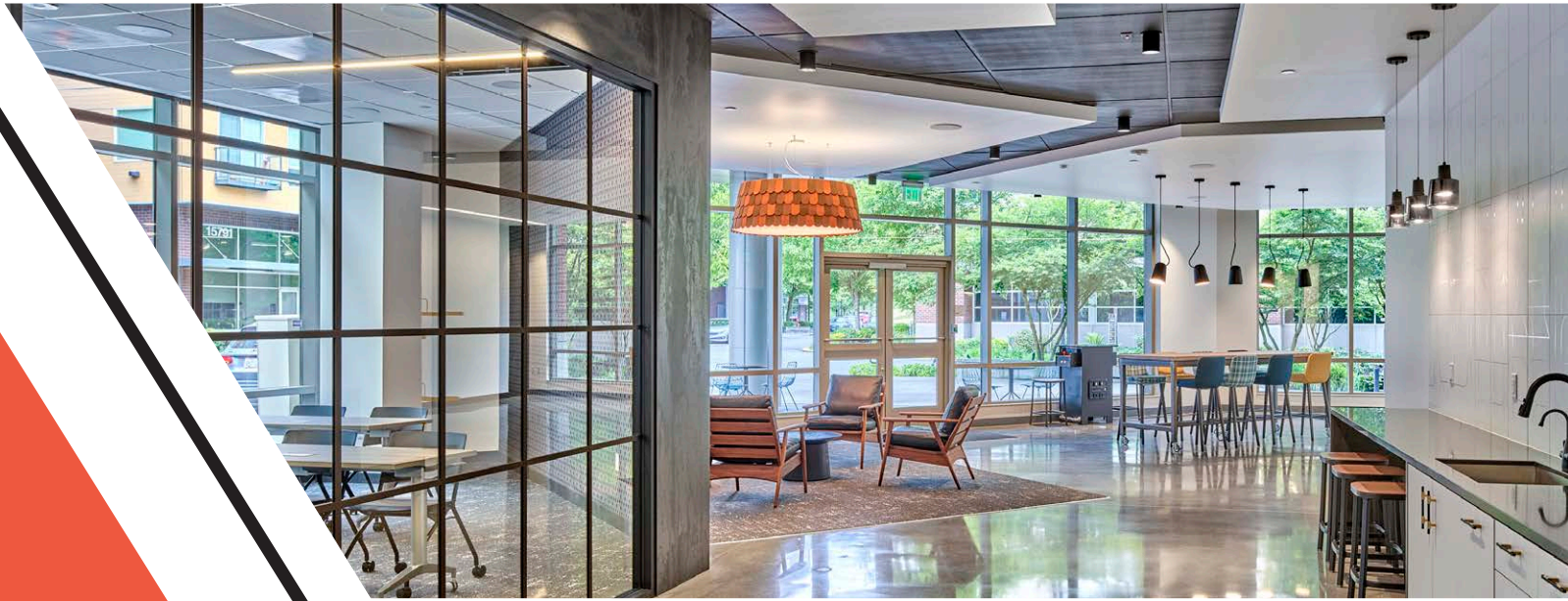


Renovated Building Lobby

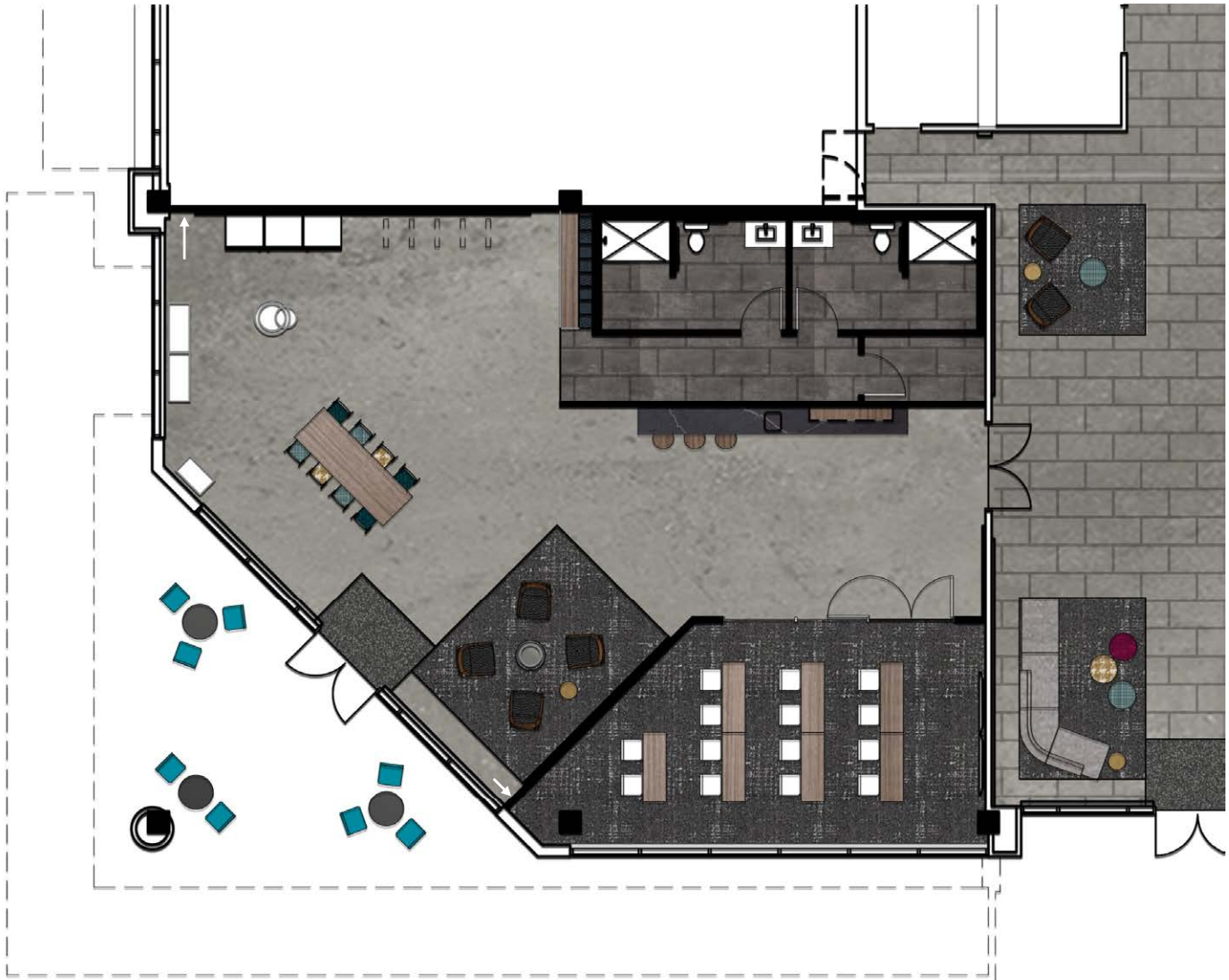
# SITE DETAILS



# NEW TENANT AMENITY CENTER



VIRTUAL TOUR  
AVAILABLE



## AMENITY CENTER FEATURES



Conference / Training Room



Lounge Seating



Casual Meeting Spaces



Bike Racks



Coffee Bar



Lockers & Showers



Arcade Games



# THE NEW REDMOND

Surrounded by housing,  
entertainment opportunities  
and retail amenities



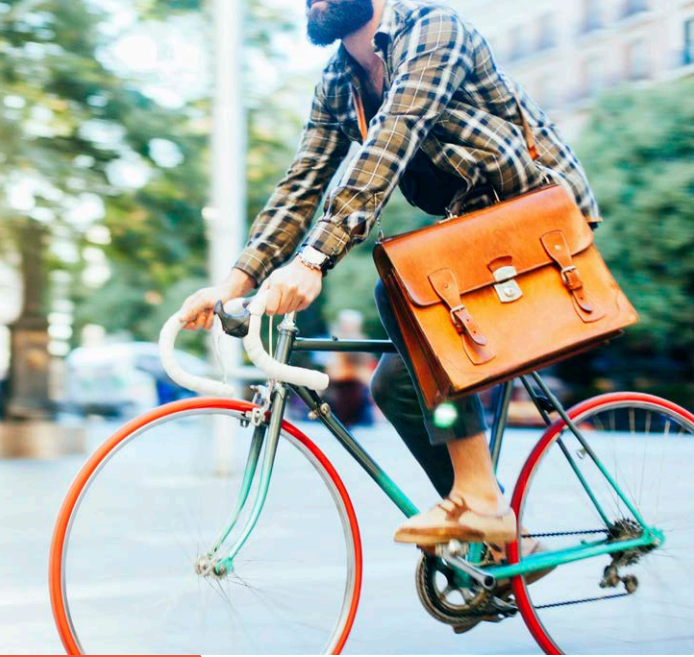
**2024**

projected opening  
of Redmond Link  
light rail extension



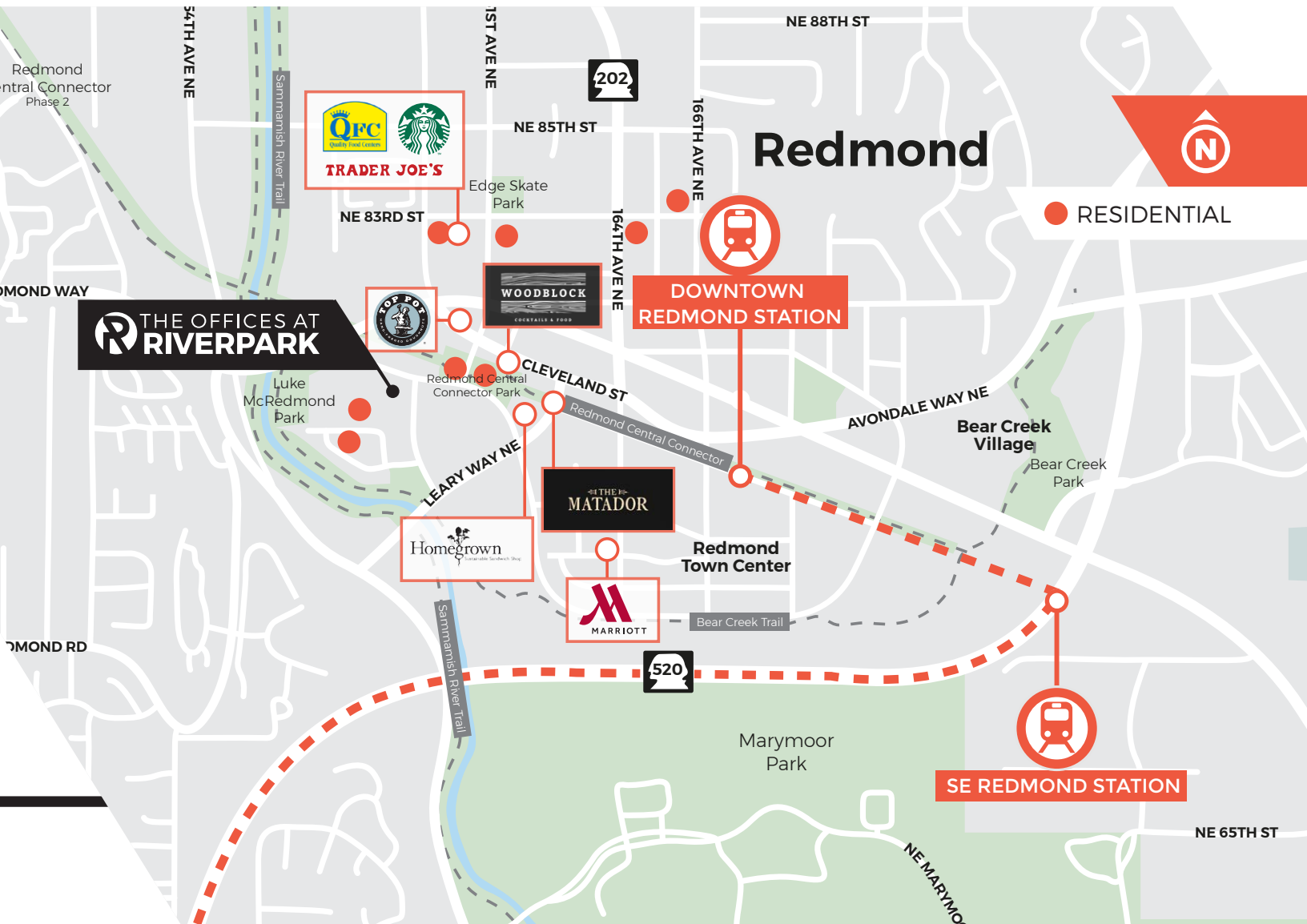
**36**

is the median age  
in Redmond



**700+**

new apartment units  
under construction  
in downtown Redmond





# THE OFFICES AT RIVERPARK

a **KBS** property

## CONTACT INFO

**SCOTT DAVIS**

Executive Vice President

+1 425 462 6912

[scott.davis@cbre.com](mailto:scott.davis@cbre.com)

**TIM OWENS**

Senior Vice President

+1 425 462 6913

[tim.owens@cbre.com](mailto:tim.owens@cbre.com)

© 2022 CBRE, Inc. All rights reserved. This information has been obtained from sources believed reliable, but has not been verified for accuracy or completeness. You should conduct a careful, independent investigation of the property and verify all information. Any reliance on this information is solely at your own risk. CBRE and the CBRE logo are service marks of CBRE, Inc. All other marks displayed on this document are the property of their respective owners. Photos here in are the property of their respective owners. Use of these images without the express written consent of the owner is prohibited. 60822AR

CBRE, INC. | 929 108TH AVENUE NE | SUITE 700 | BELLEVUE, WA 98047

Proudly leased  
and managed by

**CBRE**