

# 333 FINAL PLATTED LOTS

EXCLUSIVE LISTING | FLORENCE, ARIZONA

**LOCATION** Property is located at the NEC of Plant Road and Adamsville Road in Florence, Arizona.

**LOTS** 333 Final Platted Lots (47'x52' x 110')

**SIZE** ±73 Acres

**PRICE** \$6,000/ P&E Lot

**ZONING** R-1 PUD, Medium Density Residential, Town of Florence

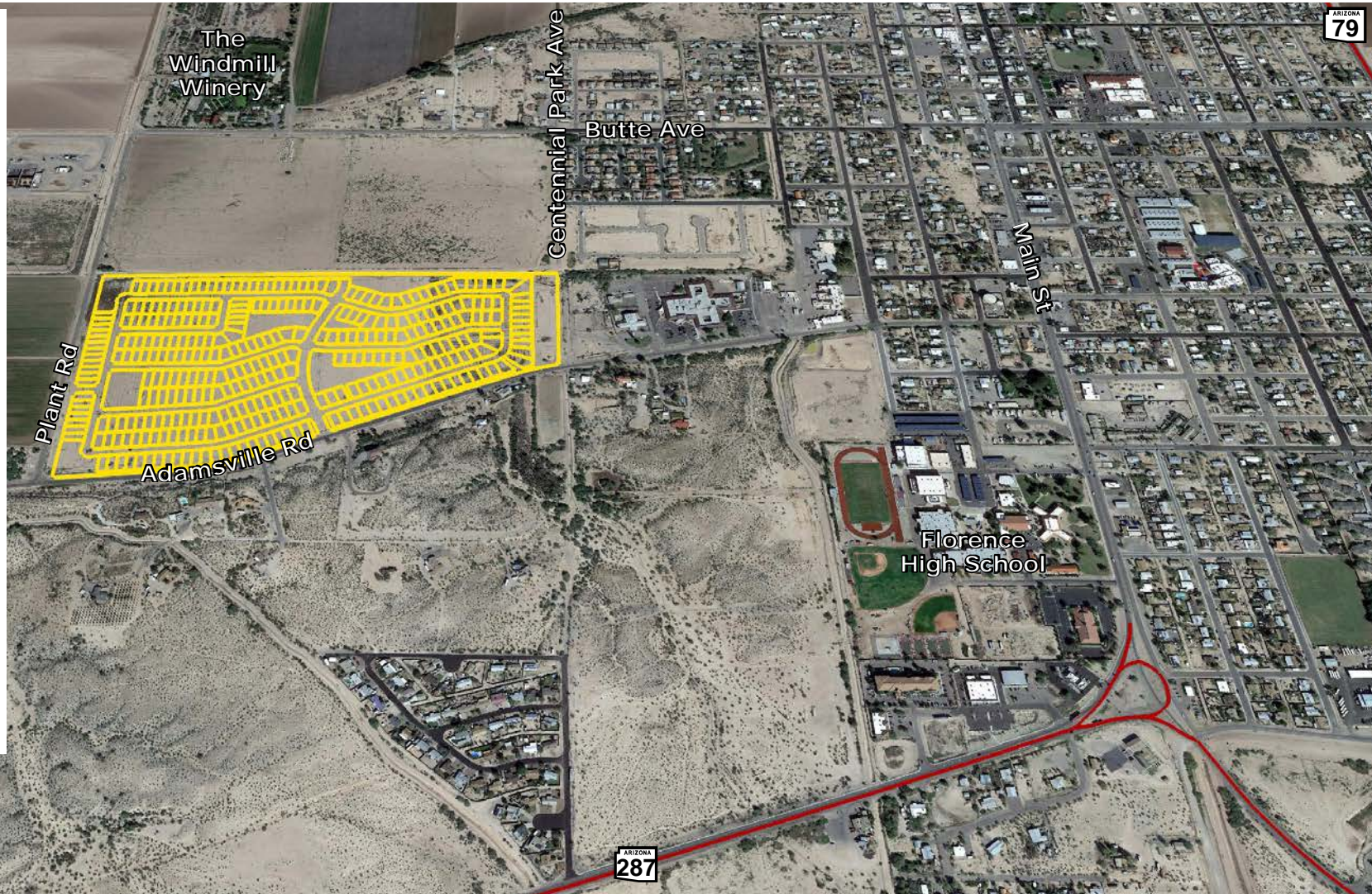
**IMPACT FEES** \$11,090 per lot

## UTILITIES

Electricity - Arizona Public Service and ED2  
Natural Gas - Southwest Gas Corporation  
Water - Town of Florence  
Sewer - Town of Florence

## COMMENTS

- Property has all water rights; can be placed back into farm production
- Paved access from Adamsville Road
- 4.56 du/ac
- Located within the [Town Core Infill Incentive Plan](#).
- [Please Click Here to View Final Plat.](#)



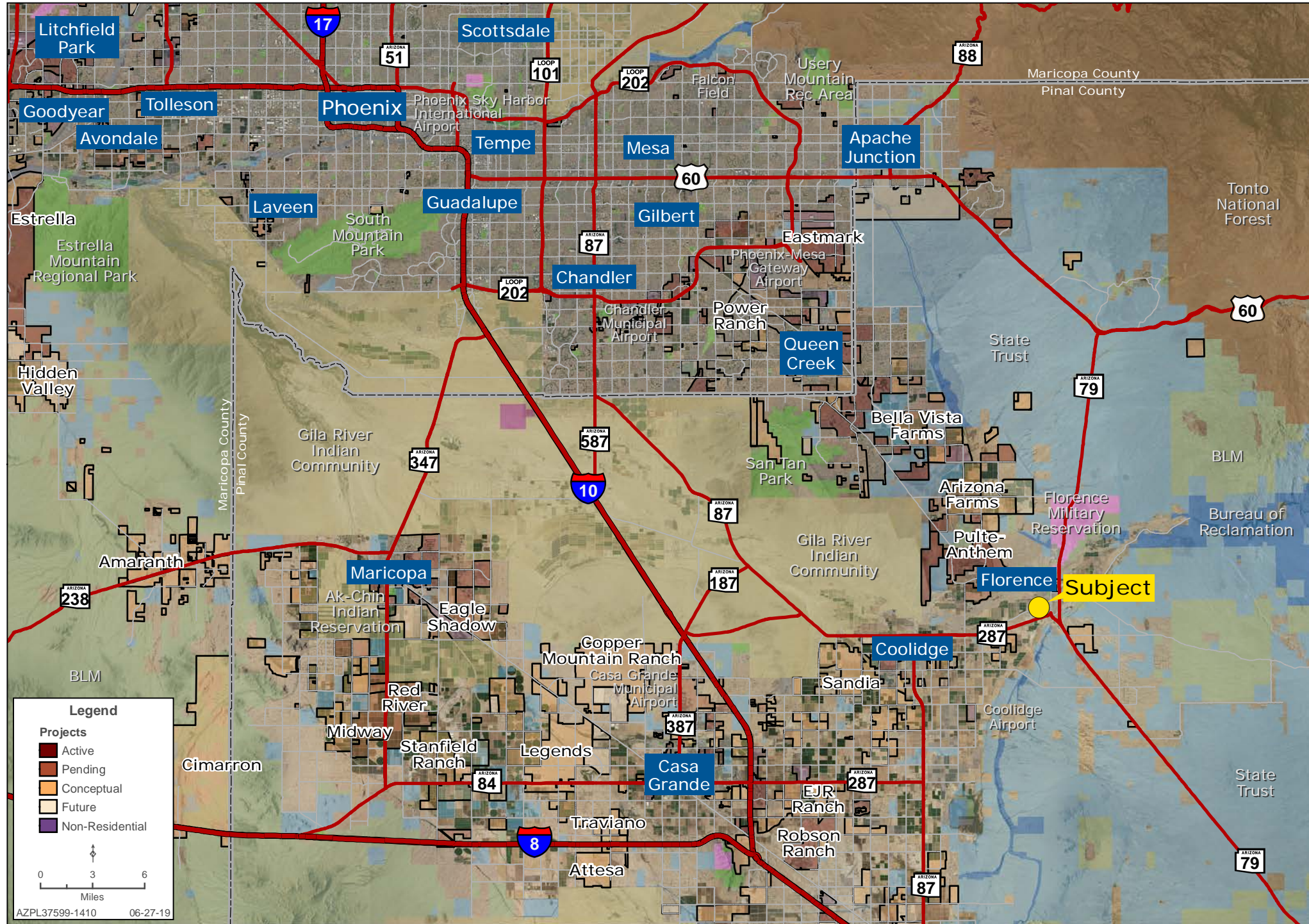
**Bret Rinehart** | brinehart@landadvisors.com **Ryan Semro** | rsemro@landadvisors.com **Ben Heglie** | bheglie@landadvisors.com  
4900 North Scottsdale Road, Suite 3000, Scottsdale, Arizona 85251 ph. 480.483.8100 | www.landadvisors.com

The information contained herein is from sources deemed reliable. We have no reason to doubt its accuracy but do not guarantee it. It is the responsibility of the person reviewing this information to independently verify it. This package is subject to change, prior sale or complete withdrawal. AZPL37599-100274 - 8.22.19

 Land Advisors<sup>®</sup>  
ORGANIZATION

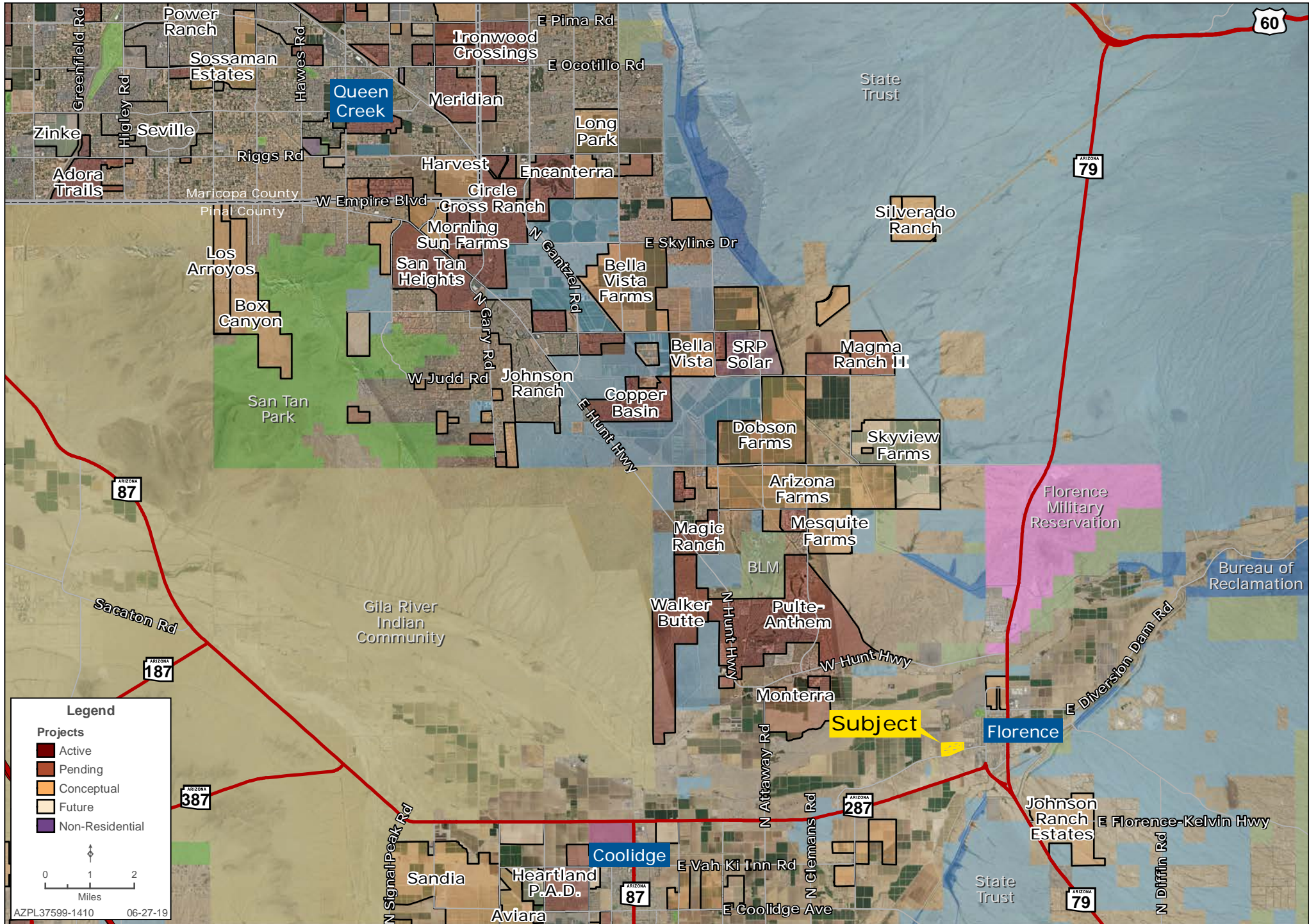
# REGIONAL MAP

Bret Rinehart | Ryan Semro | Ben Heglie | 480.483.8100 | www.landadvisors.com



# SURROUNDING DEVELOPMENT MAP

Bret Rinehart | Ryan Semro | Ben Heglie | 480.483.8100 | www.landadvisors.com



**Legend**

**Projects**

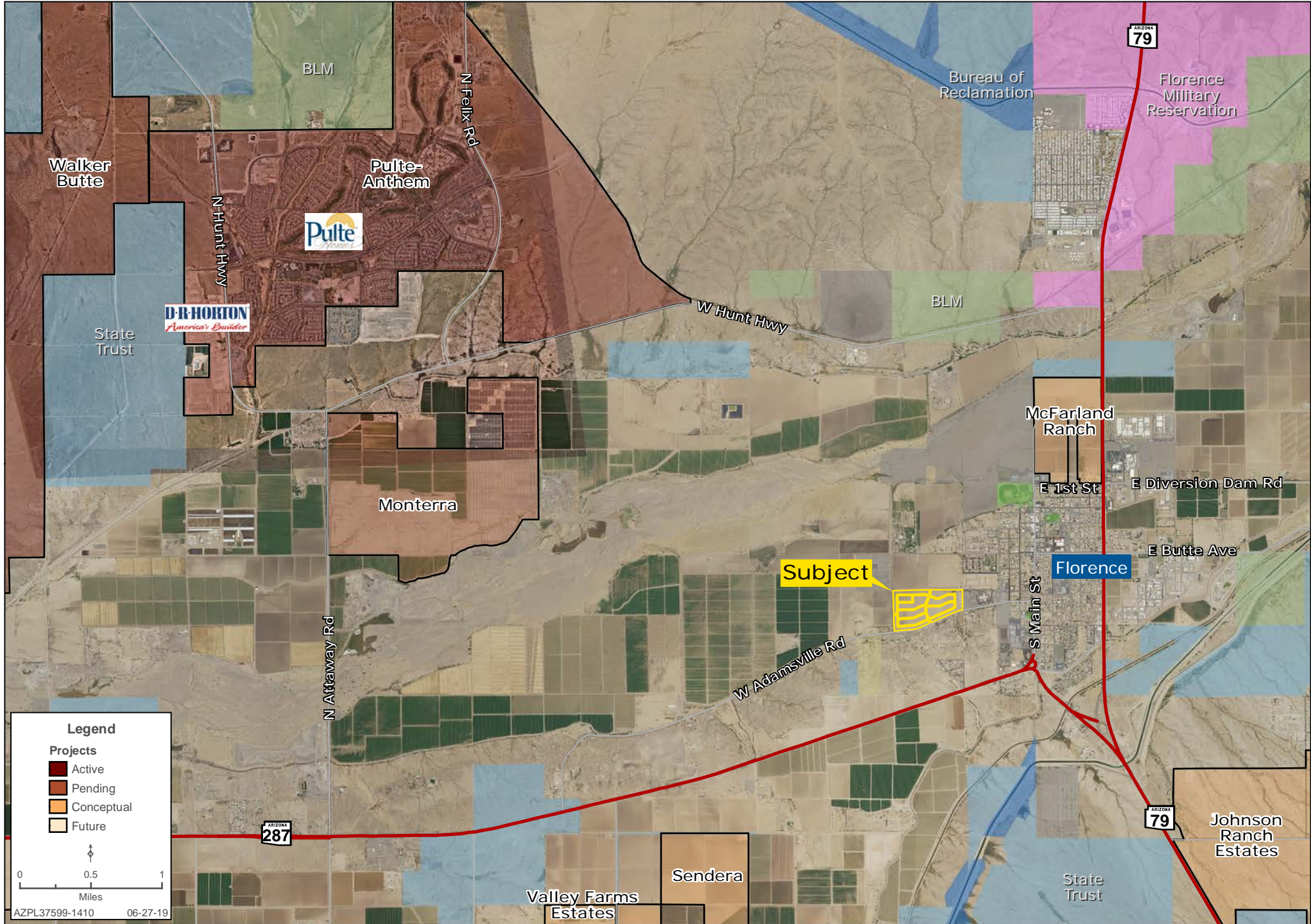
- Active
- Pending
- Conceptual
- Future
- Non-Residential

0 1 2  
Miles

AZPL37599-1410 06-27-19

# SURROUNDING AREA MAP

Bret Rinehart | Ryan Semro | Ben Heglie | 480.483.8100 | www.landadvisors.com



# PROPERTY DETAIL MAP

Bret Rinehart | Ryan Semro | Ben Heglie | 480.483.8100 | www.landadvisors.com

