

Jewel-Osco Outlot Available



# OUTLOT AVAILABLE

SWC Calumet Ave & Ridge Rd, Munster, IN



35,095 ADT

Calumet Ave

Jewel-Osco

0.44 Ac  
Outlot

First  
Midwest  
Bank

Ridge Rd

22,404 ADT

bp

Citizens Bank

Flexeon  
REMODELING  
Experience. Care. Performance.

CITGO



# JEWEL-OSCO OUTLOT AVAILABLE

## Outlot Available

SWC Calumet Ave & Ridge Rd, Munster, IN



Location Summary

This outlot is strategically located at the heavily trafficked intersection of Ridge Road (22,404 ADT) and Calumet Ave (35,095 Ave).

This property is 0.5 miles south of the I-80/94 Interchange and this trade area's proximity to the Illinois state line attracts Illinois shoppers seeking Indiana's lower sales tax rate.

Area retailers include Jewel Osco, Target, McDonald's, Chipotle, Panera Bread and Five Guys.



Site Information

<b>Land Available</b>	Approximately 0.44 Acres	
<b>Population Density</b>	10,404	1 Mile Radius
	103,878	3 Mile Radius
	233,070	5 Mile Radius
<b>Average Household Income</b>	\$75,420	1 Mile Radius
	\$64,770	3 Mile Radius
	\$60,657	5 Mile Radius



Contact

**Matt Cavanagh**

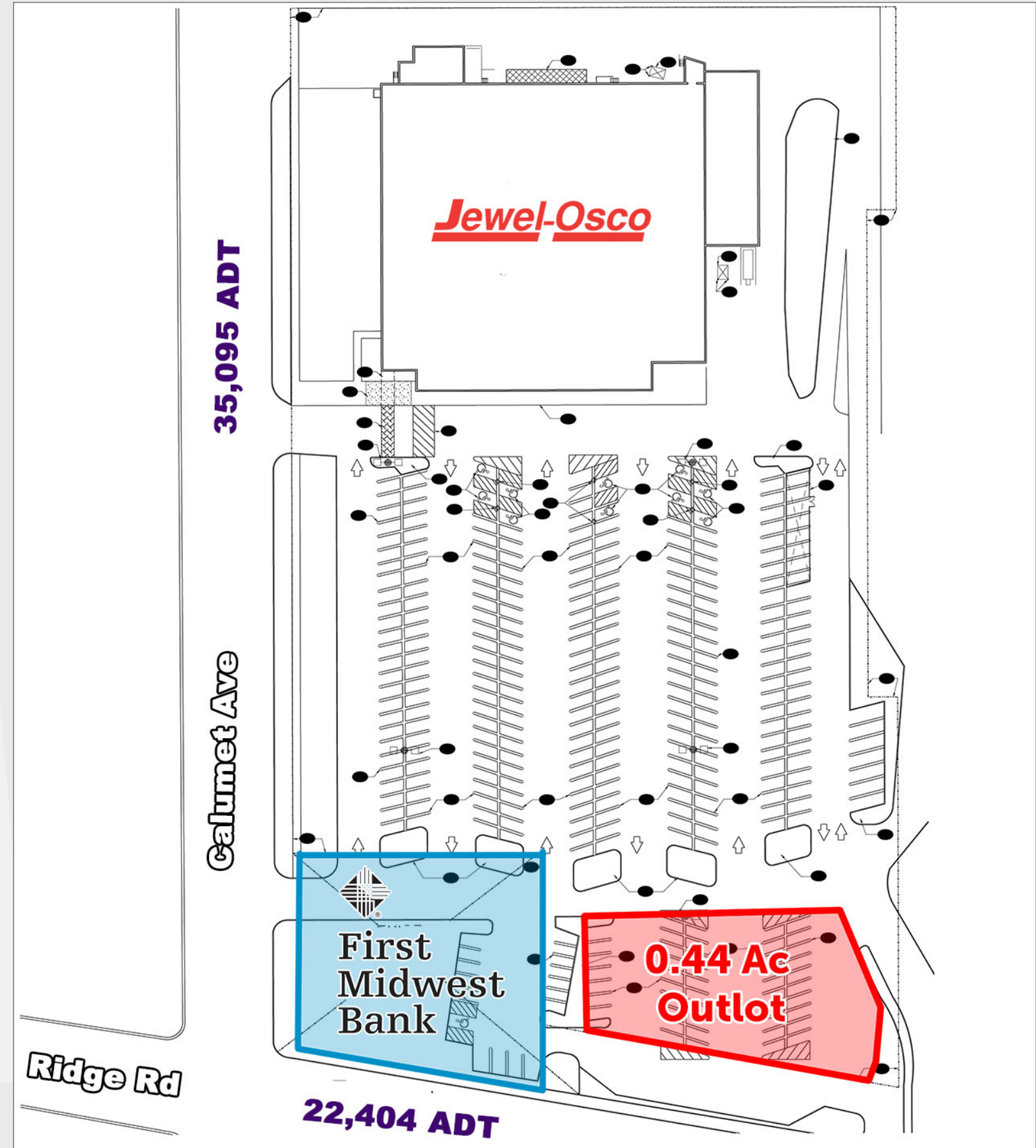
e: [matt@arcgrp.com](mailto:matt@arcgrp.com) p: (630) 908-5694

**Andy Robbins**

e: [arobbins@arcgrp.com](mailto:arobbins@arcgrp.com) p: (630) 908-5707

**Courtney Darin**

e: [courtney@arcgrp.com](mailto:courtney@arcgrp.com) p: (630) 908-5691



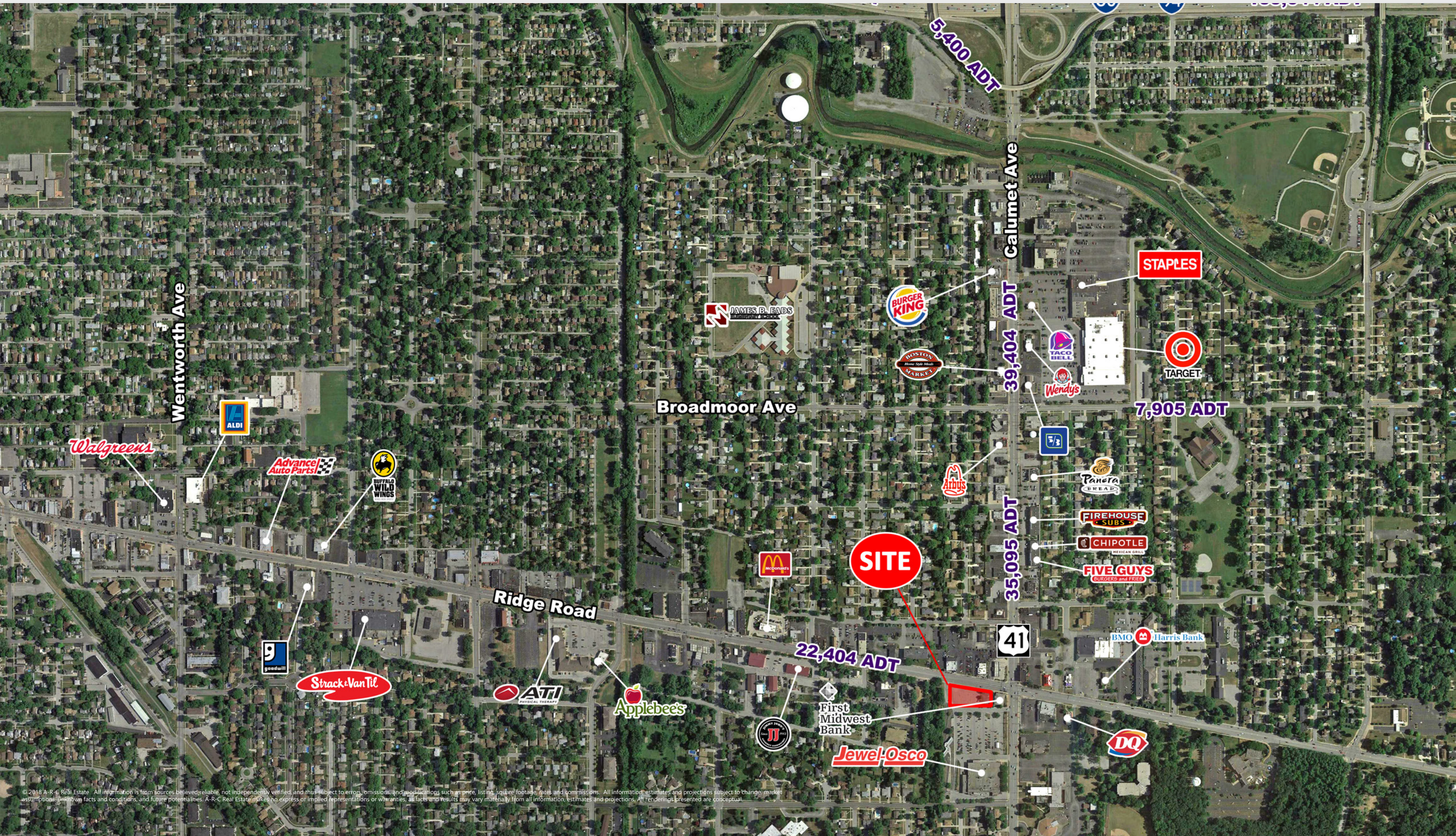


# JEWEL-OSCO OUTLOT AVAILABLE

## Outlot Available

SWC Calumet Ave & Ridge Rd, Munster, IN

AERIAL



© 2018 A-R-C Real Estate. All information is from sources believed reliable, not independently verified, and thus subject to errors, omissions, and modifications such as price, listing, square footage, rates and commissions. All information, estimates and projections subject to change, market assumptions, unknown facts and conditions, and future potentialities. A-R-C Real Estate makes no express or implied representations or warranties, as facts and results may vary materially from all information, estimates and projections. All renderings presented are conceptual.