

FOR SUBLEASE - 4,029 SF AVAILABLE

# 1301 W GEORGE BUSH HWY - 1ST FLOOR

RICHARDSON, TEXAS 75080



## SPECIFICATIONS

- 4,029 SF Available
- Available through October 2020
- 3-Story Class A office building
- 5:1,000 Parking
- On-site security, management and building engineer
- Murphy's on-site deli



## FOR INFORMATION CONTACT

JOE WHITMER  
214.446.4556  
joe.whitmer@transwestern.com

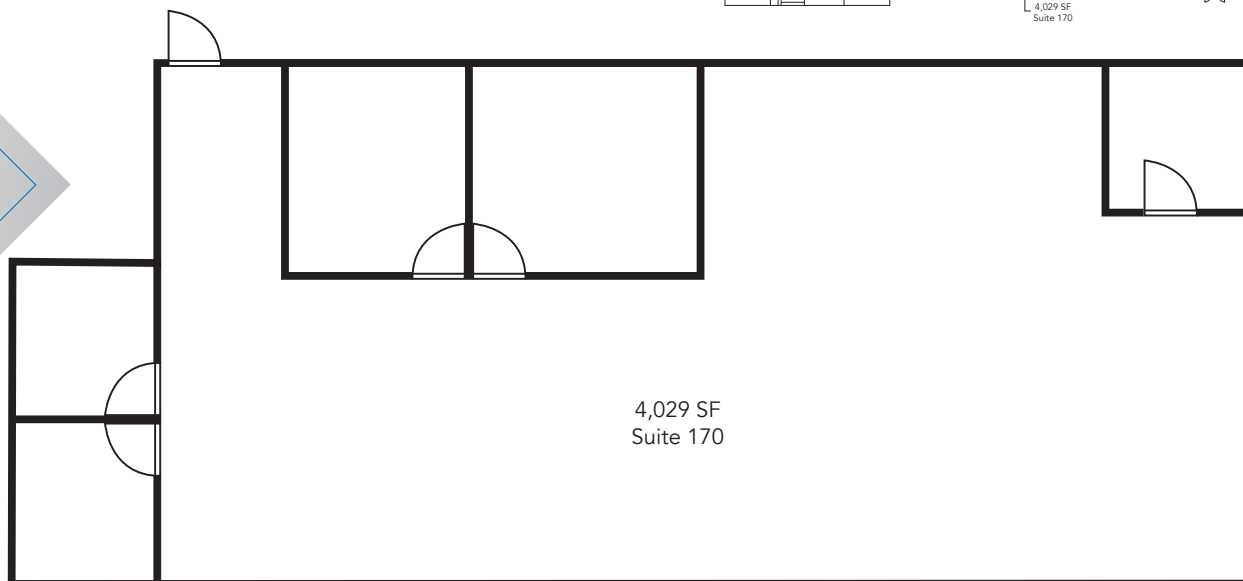
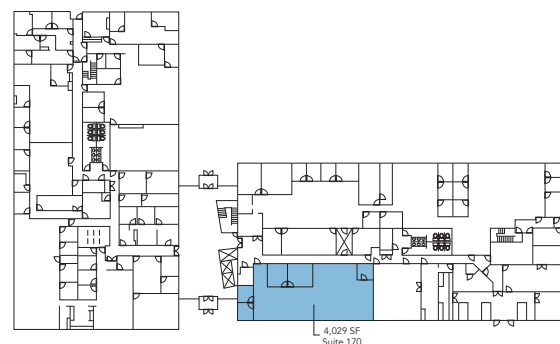
EMILY RANKIN  
214.446.4571  
emily.rankin@transwestern.com



FOR SUBLEASE - 4,029 SF AVAILABLE

# 1301 W GEORGE BUSH HWY - 1ST FLOOR

RICHARDSON, TEXAS 75080



## FOR INFORMATION CONTACT

JOE WHITMER  
214.446.4556  
[joe.whitmer@transwestern.com](mailto:joe.whitmer@transwestern.com)

EMILY RANKIN  
214.446.4571  
[emily.rankin@transwestern.com](mailto:emily.rankin@transwestern.com)

