



**FOR LEASE**  
175 SOUTH WEST TEMPLE  
SALT LAKE CITY, UT

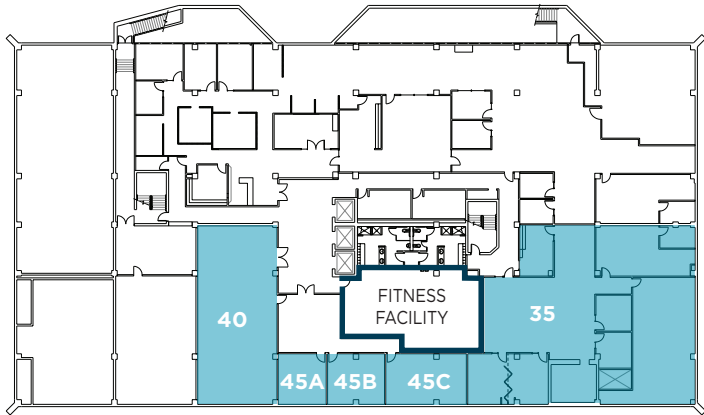
**Central  
Downtown  
Location**



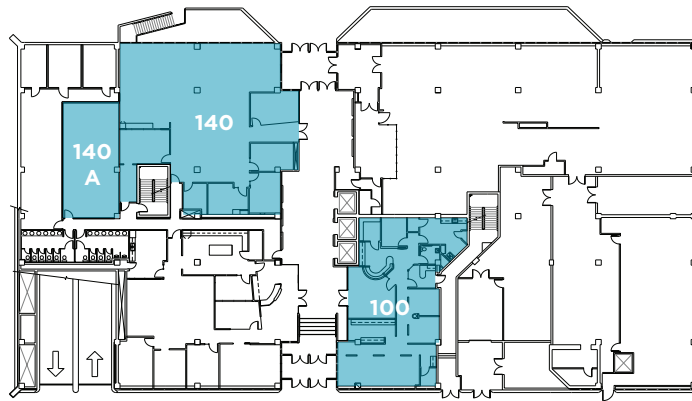
## PROPERTY HIGHLIGHTS

- Prominent downtown location with abundant amenities within walking distance
  - One block from TRAX light rail
- Large floor plates provide maximum efficiency.
- Suites range from 1,000 SF - 18,650 SF
- Up to 53,000 SF available on floors 5-7
- On-site covered parking with direct, secure access from the elevator
  - The Salt Palace Convention Center provides additional parking for tenants of 175 West Temple
- Recently updated lobbies and common areas
- Crown signage available
- On-site fitness center & showers

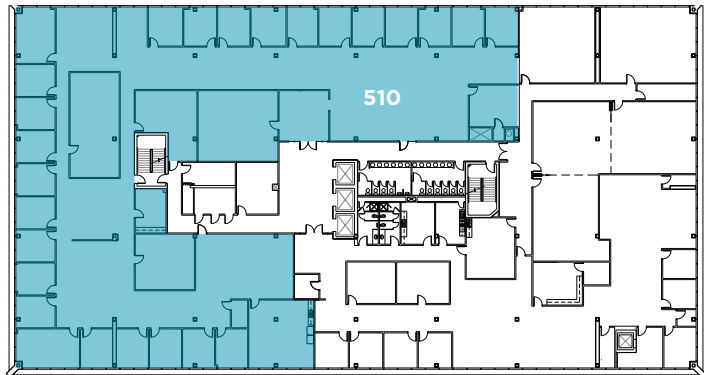




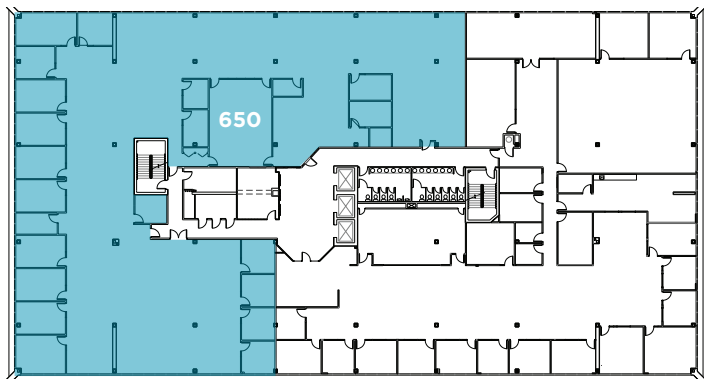
Garden Level | 460-9,978 SF



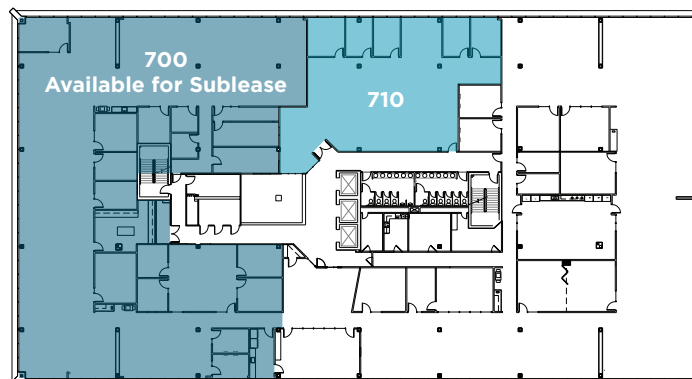
First Floor | 1,049 - 8,107 SF



Fifth Floor | 18,650 SF (demisable)



Sixth Floor | 16,767 SF (demisable)



Seventh Floor | 3,880 - 17,223 SF

## SPACE AVAILABLE

### Garden Level

Suite 35		5,650 SF
Suite 40		2,569 SF
Suite 45A		460 SF
Suite 45B		537 SF
Suite 45C		762 SF \$12.00 FS

### 1st Floor

Suite 140A		1,049 SF \$18.50 FS
Suite 140		4,394 SF \$18.50 FS
Suite 100		2,664 SF \$25.00 FS

### 5th Floor

Suite 510		18,650 SF \$24.00 FS
-----------	--	-------------------------

### 6th Floor

Suite 650		16,767 SF \$25.00 FS
-----------	--	-------------------------

### 7th Floor

Suite 710		3,880 SF \$25.00 FS
-----------	--	------------------------

# FOR LEASE

175 SOUTH WEST TEMPLE  
SALT LAKE CITY, UT



## STOLTZ

JESSE MANGUM

Director

801 303 5547

[jesse.mangum@cushwake.com](mailto:jesse.mangum@cushwake.com)

MIKE RICHMOND

Executive Director

801 303 5434

[mike.richmond@cushwake.com](mailto:mike.richmond@cushwake.com)

DANA BAIRD, CCIM

Executive Director

801 303 5526

[dana.baird@cushwake.com](mailto:dana.baird@cushwake.com)

AMANDA LAWSON

Associate

801 303 5492

[amanda.lawson@cushwake.com](mailto:amanda.lawson@cushwake.com)

Cushman & Wakefield Copyright 2018. No warranty or representation, express or implied, is made to the accuracy or completeness of the information contained herein, and same is submitted subject to errors, omissions, change of price, rental or other conditions, withdrawal without notice, and to any special listing conditions imposed by the property owner(s). As applicable, we make no representation as to the condition of the property (or properties) in question. (path: G:\1 - Projects\Richmond, Mike\1 - Flyers\175WestTemple)

