

CBRE



3520 KURTZ ST. | SAN DIEGO, CA 92110

AVAILABLE FOR LEASE | MIDWAY INDUSTRIAL PARK



BUILDING FEATURES:



- ±3,825 SF Available for Lease



- 100% HVAC



- Drop ceilings throughout



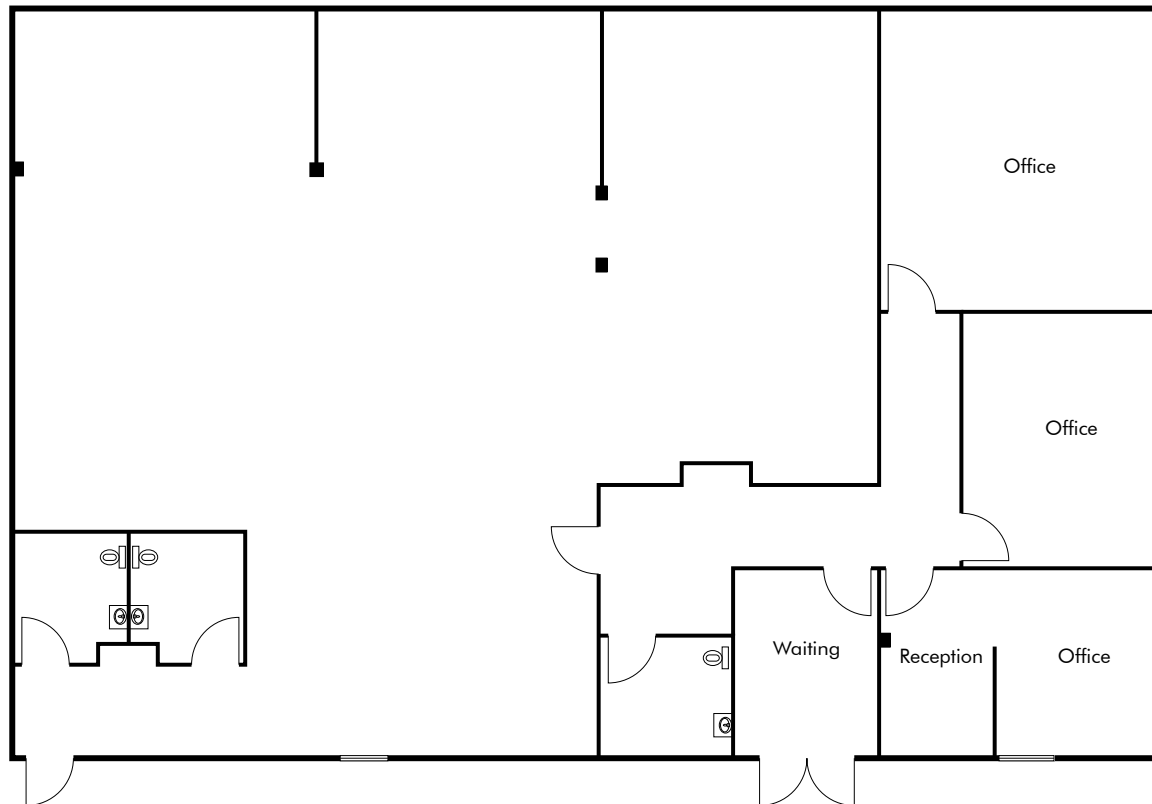
- IS1-1 Zoning



- Immediate access to Interstates 5 & 8

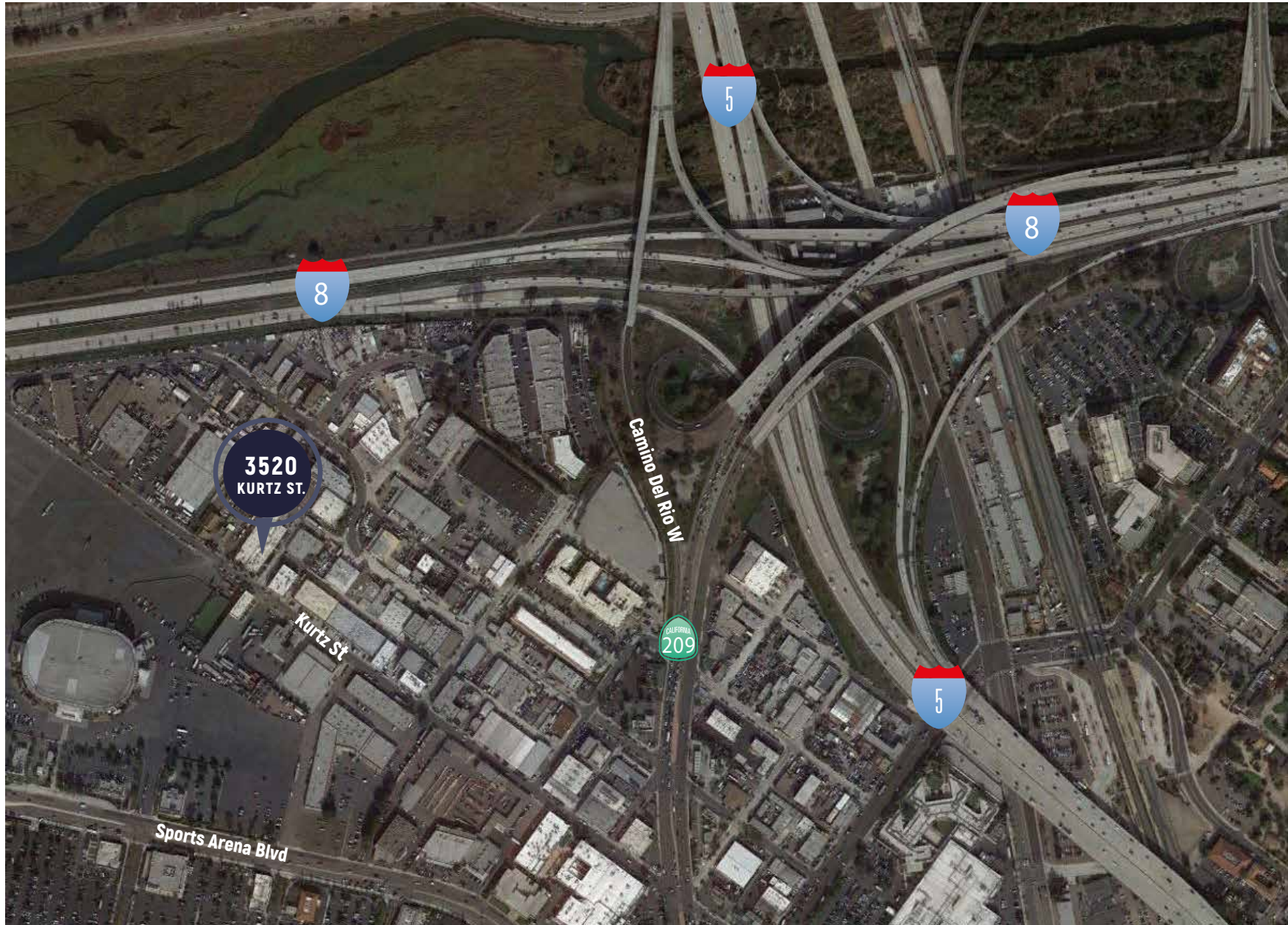


3520 KURTZ ST FLOOR PLAN



- ±3,825 SF
- Lease Rate: \$1.05/SF NNN (Nets are approx. \$0.23/SF)
- Available Immediately

AERIAL MAP





**3520
KURTZ ST.**

SEAN WILLIAMS, SIOR
Vice President
Lic. 1475415
+1 858 546 4625
sean.williams@cbre.com

PETE CARROCCIO
Associate
Lic. 02022898
+1 858 546 4679
pete.carroccio@cbre.com

BILL DOLAN
Senior Vice President
Lic. 01188240
+1 858 546 4678
bill.dolan@cbre.com

CBRE

© 2019 CBRE, Inc. All rights reserved. This information has been obtained from sources believed reliable, but has not been verified for accuracy or completeness. Any projections, opinions, or estimates are subject to uncertainty. The information may not represent the current or future performance of the property. You and your advisors should conduct a careful, independent investigation of the property and verify all information. Any reliance on this information is solely at your own risk. CBRE and the CBRE logo are service marks of CBRE, Inc. and/or its affiliated or related companies in the United States and other countries. All other marks displayed on this document are the property of their respective owners. Photos herein are the property of their respective owners and use of these images without the express written consent of the owner is prohibited. PMStudio_Jan2019