

ABELE BUSINESS PARK
10 EMERSON LANE
BRIDGEVILLE/SOUTH FAYETTE, PA 15017



LEASE NOW

SUITE 803 - 1,171 RSF



Tenant Perk Program



Walking Trail & Exercise Stations



iBench for Outdoor Meeting



Food Trucks Weekly



15 Minutes to Pittsburgh



Walkability to Retail

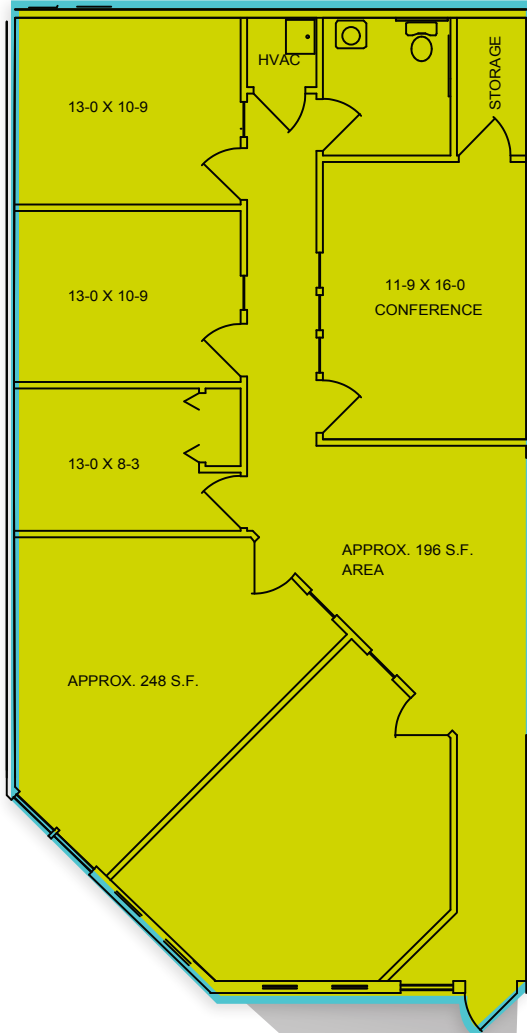


Direct Interchange Access

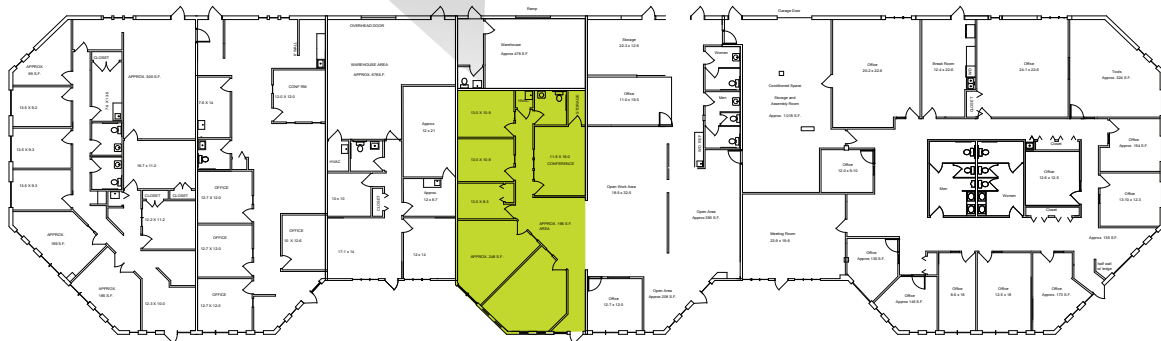
CONTACT SHANNON MCGUIRE: 412.266.4417 | SMcguire@BurnsScalo.com
412.250.3000 | BurnsScaloRealEstate.com

10 EMERSON LANE SUITE 803

1,171 RSF
OFFICE &
WAREHOUSE SPACE



- 5 private offices
- Large conference room
- Move In Ready



CONTACT SHANNON MCGUIRE: 412.266.4417 | SMcguire@BurnsScalo.com
412.250.3000 | BurnsScaloRealEstate.com