

NORTH PORT COMMONS | North Port, Florida

SIZE

13 acres

LOCATION

Southwest corner of US-41 & Tuscola Blvd.
North Port, FL

TRAFFIC COUNTS

US-41 - 34,000 ADT

KEY TENANTS

Grocery pending

KEY DEMOGRAPHICS

3-MILE RADIUS

POPULATION

Current Estimated Population	35,422
Projected Population (5 Years)	39,273
2010 Census Population	31,978

HOUSEHOLDS

Current Estimated Households	15,695
Projected Households (5 Years)	16,937
2010 Census Households	14,076

INCOME

Average Household Income	\$66,128
--------------------------	----------

MEDIAN AGE

51.5 years

DAYTIME DEMOGRAPHICS

Number of Businesses	1,478
Number of Employees	11,225



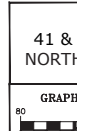
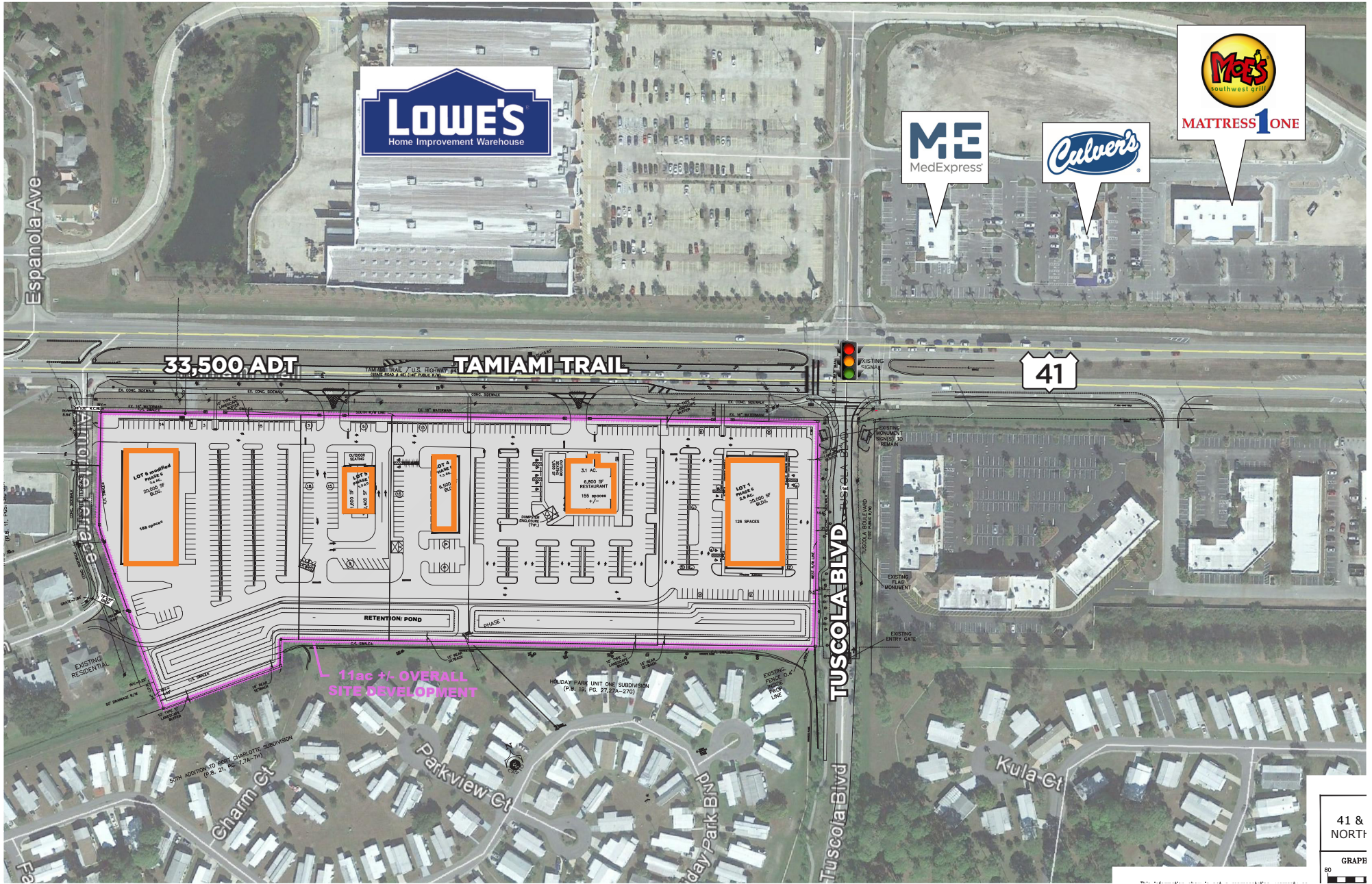
LEASING CONTACTS

Massimo Rastrelli
941.552.4336 OFFICE
MRastrelli@castoinfo.com



5391 Lakewood Ranch Blvd., Suite 100
Sarasota, Florida 34240

www.castoinfo.com



Tenant names, building sizes and shopping center configuration are subject to change.



