



## 1000 W 12th Street

Kansas City, Missouri

### Property Features

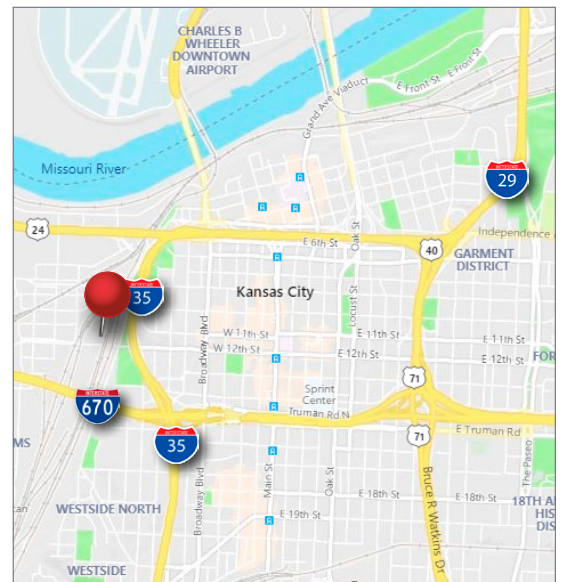
- 51,304 Total SF
  - ±2,000 SF newly renovated office
- Three (3) Dock-high loading doors
- One (1) Drive-in loading door
- Est. 480/208v, 3-phase power
- 3.166 Acre parcel
- Wet sprinkler system
- Lease Rate: \$2.75 PSF 'gross'

For more information:

**Nathan Anderson, SIOR, CCIM**

+1 913 890 2001

nathan@nai-heartland.com

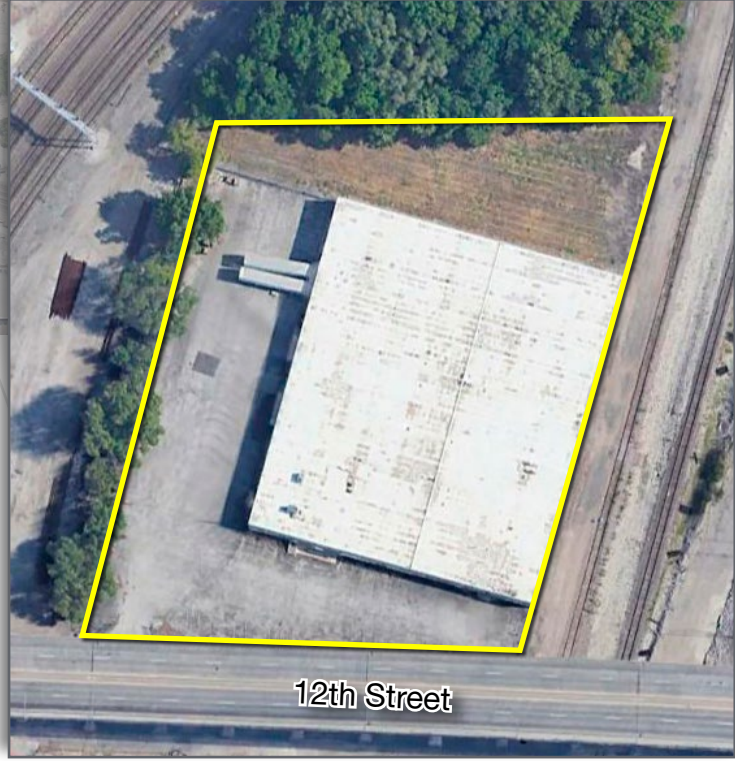


**Joe O'Neill**

+1 913 890 2010

joe@nai-heartland.com

For Lease  
**1000 W 12th St**



For more information:

**Nathan Anderson, SIOR, CCIM**

+1 913 890 2001  
nathan@nai-heartland.com

**Joe O'Neill**

+1 913 890 2010  
joe@nai-heartland.com



4400 College Boulevard, Suite 170  
Overland Park, KS 66211  
+1 913 362 1000  
[nai-heartland.com](http://nai-heartland.com)



For Lease  
1000 W 12th St



For more information:

**Nathan Anderson, SIOR, CCIM**

+1 913 890 2001

nathan@nai-heartland.com

**Joe O'Neill**

+1 913 890 2010

joe@nai-heartland.com

**NAI**Heartland

4400 College Boulevard, Suite 170

Overland Park, KS 66211

+1 913 362 1000

[nai-heartland.com](http://nai-heartland.com)