

13245 Riverside Drive

Sherman Oaks, CA 91423

OFFICE SPACE FOR LEASE



Charles Dunn

CONTACT:

TODD M. WUSCHNIG

Director

CalBRE #01367230

Direct | 818.455.8205

twuschnig@charlesdunn.com

CHARLES DUNN COMPANY, INC.

12925 Riverside Drive, Suite 201 | Sherman Oaks, CA 91423 | Lic. #01201641 | charlesdunn.com

PROPERTY DETAILS

13245 Riverside Drive is an office building with easy access and visibility. It is close to Sherman Oaks Fashion Square and other amenities.

PROPERTY FACTS

Price: \$2.50/SF Full Service Gross
Parking: 3/1000 \$75.00 Reserved & Single Space \$100.00 Reserved & Tandem Space
Term: 3-5 years

PROPERTY HIGHLIGHTS

- > High ceilings and great window line
- > Covered on-site parking in secured lot
- > Great street parking
- > On-site security

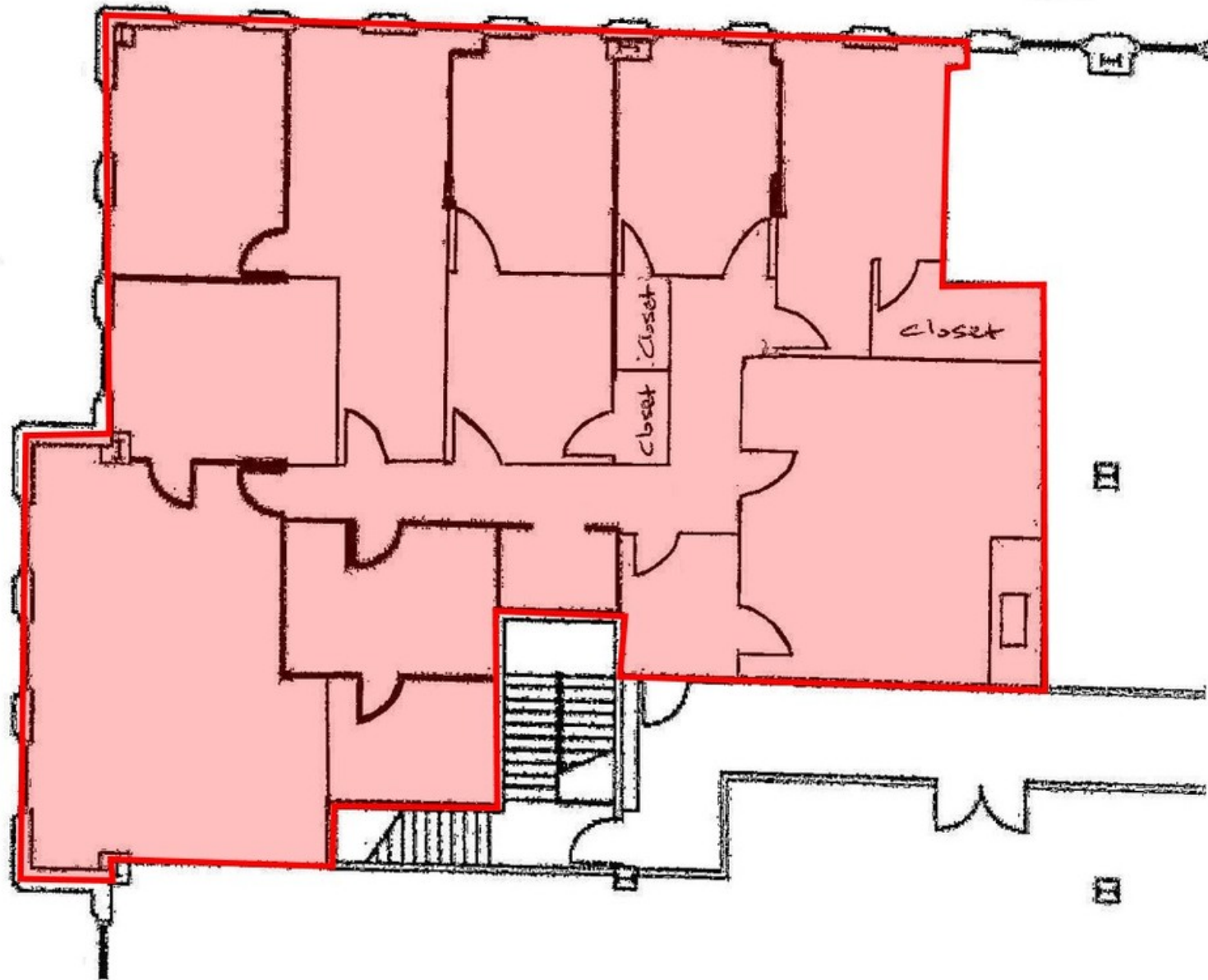


PROPERTY DETAILS

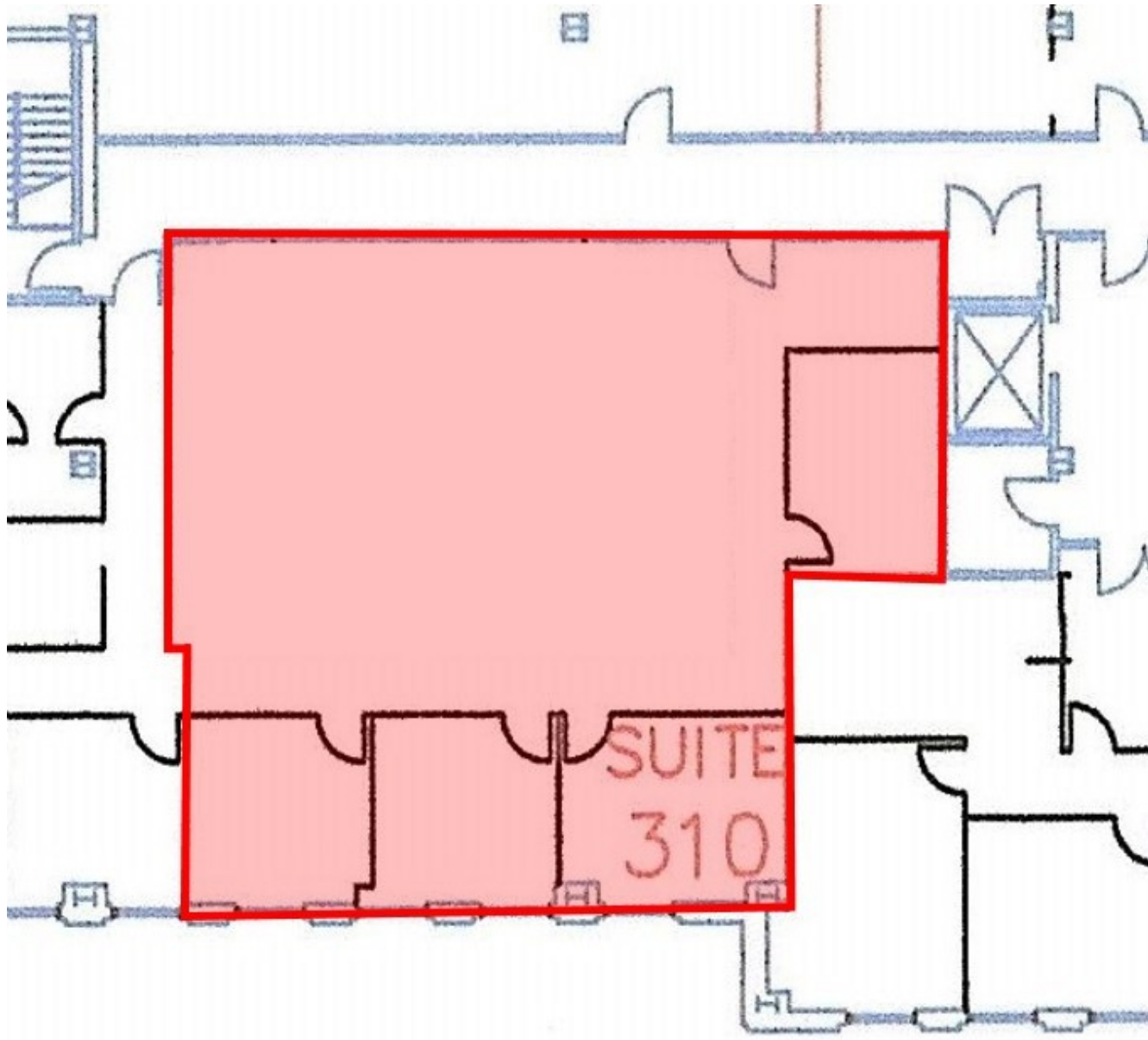
SPACE AVAILABLE	SIZE	LEASE RATE	COMMENTS
Suite 300	± 3,348 SF	\$2.50/SF Full Service Gross	
Suite 310	± 2,228 SF	\$2.50/SF Full Service Gross	
Suite 440	± 2,300 SF	\$2.50/SF Full Service Gross	Creative opportunity, raw space with exposed ceilings & concrete flooring
Suite 500	± 2,103 SF	\$2.50/SF Full Service Gross	



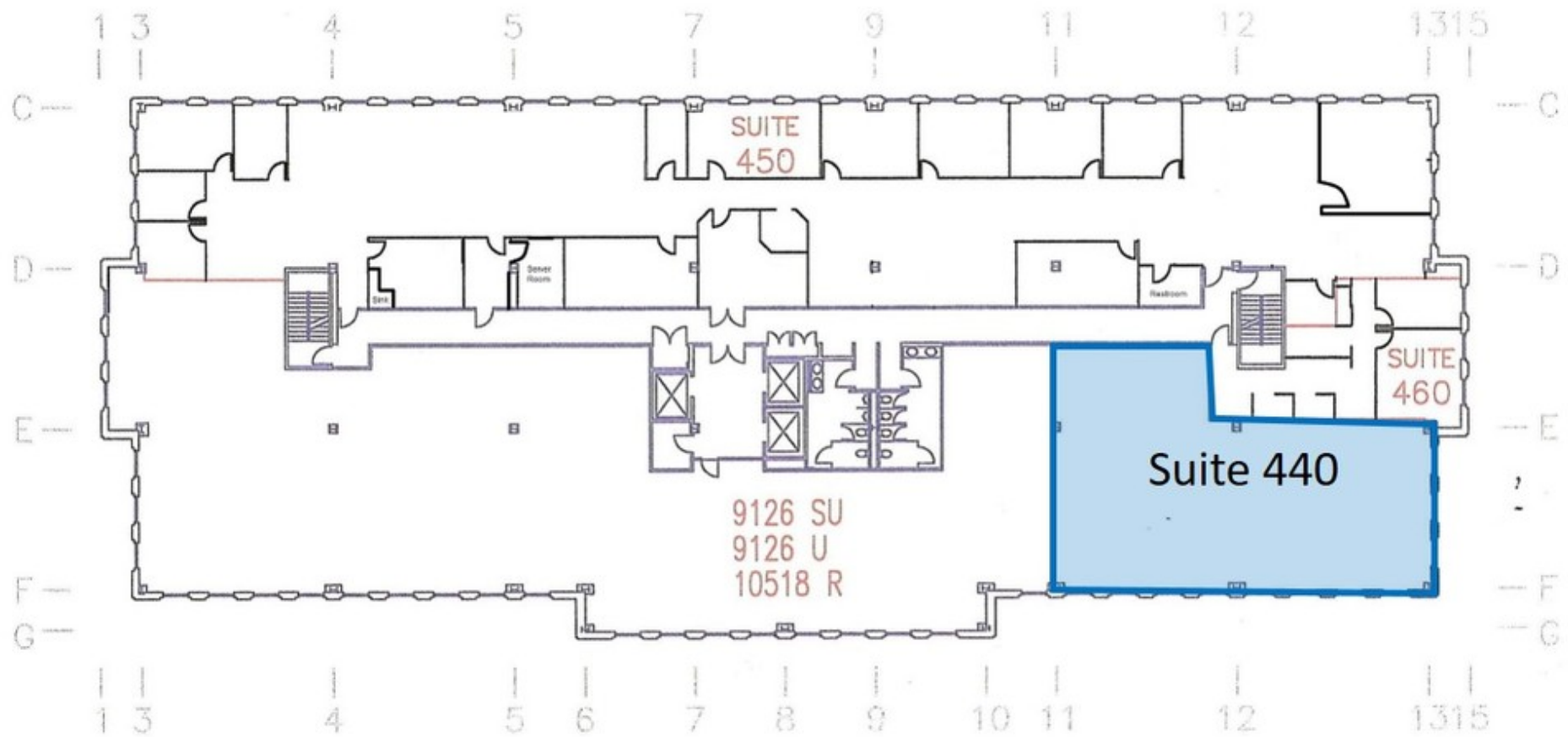
SUITE 300 FLOOR PLAN



SUITE 310 FLOOR PLAN



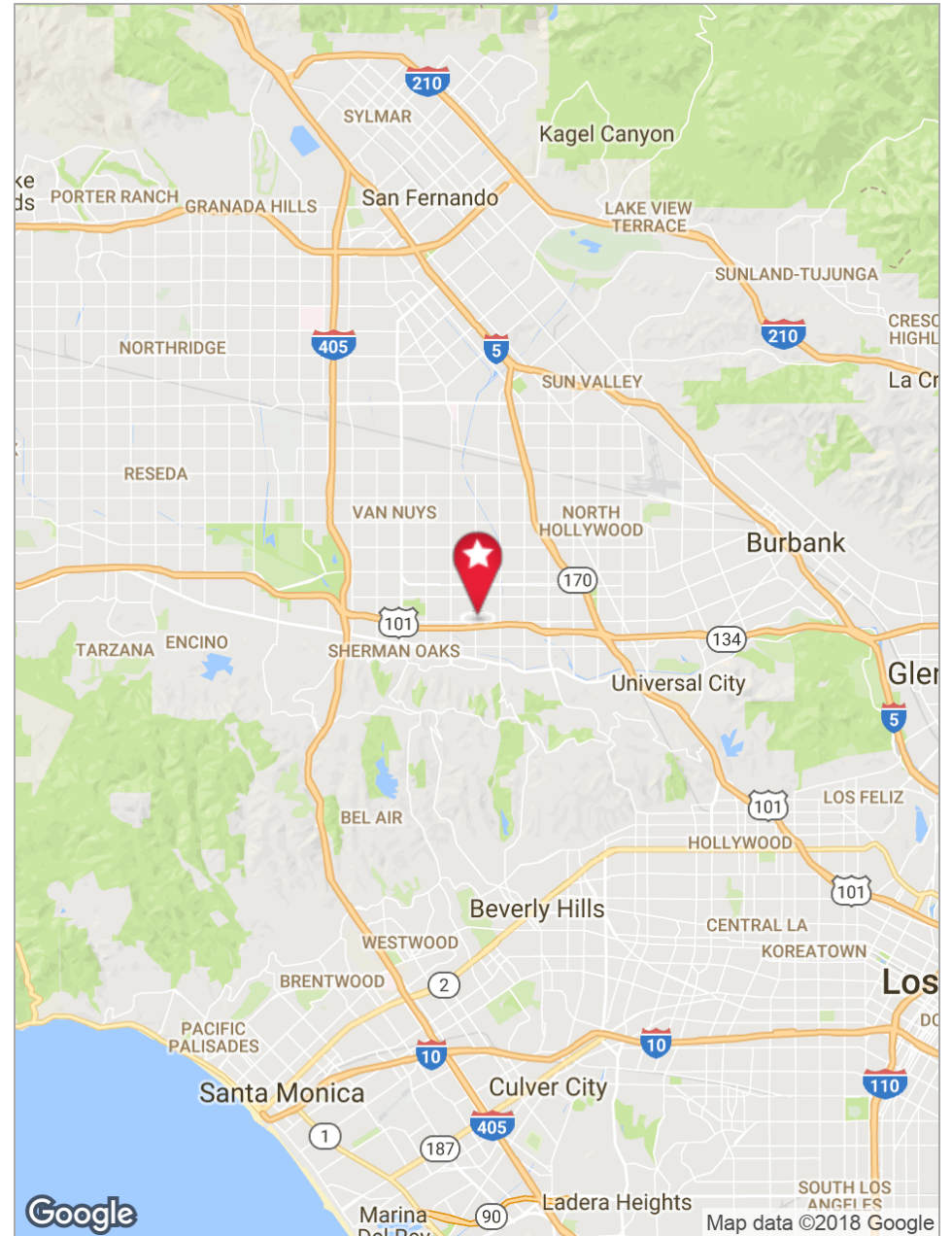
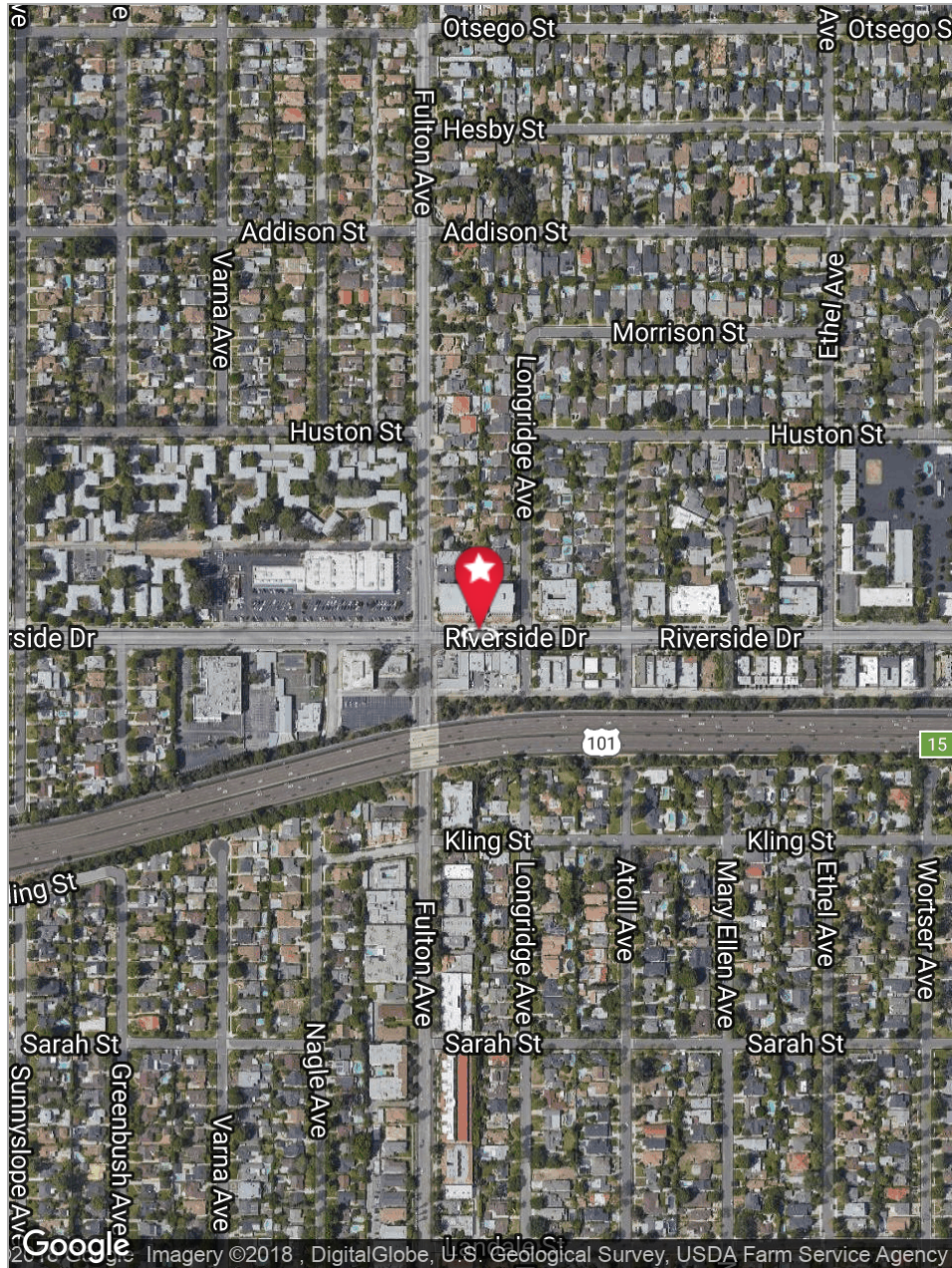
4TH FLOOR PLAN



PROPERTY PHOTOS



PROPERTY MAPS



13245 Riverside Drive

Sherman Oaks, CA 91423

TODD M. WUSCHNIG

Director

CalBRE #01367230

Direct | 818.455.8205

twuschnig@charlesdunn.com

Charles Dunn Company, Inc. | 12925 Riverside Drive, Suite 201 | Sherman Oaks, CA 91423 | Lic. #01201641 | charlesdunn.com

© Charles Dunn Company, Inc. These materials are based on information and content provided by others which we believe are accurate. No guarantee, warranty or representation is made by the Charles Dunn Company or its personnel, and all interested parties must independently verify its accuracy and completeness. As well, any projections, assumptions, opinion, or estimates are used for example only and do not represent the current or future performance of the identified property. Your tax, financial, legal and toxic substance advisors should conduct a careful investigation of the property and its suitability for your needs, including land use limitations.