



WAREHOUSE BUILDING

9801 E. 56th Street, Raytown, Missouri

FOR SALE



SALE PRICE: \$225,000 | 5,200 SF WAREHOUSE

DEMOGRAPHICS

	1 mile	3 miles	5 miles
Estimated Population	8,413	53,912	146,376
Avg. Household Income	\$59,409	\$64,207	\$61,359

- 5,200 SF warehouse on 0.63 acre
- 10' x 12' overhead door
- Three 5 ton AC's on roof and heat
- Roof replaced in 2010
- One bathroom
- Large parking lot
- Plenty of power
- Additional 0.8 acre available

 [CLICK HERE TO VIEW MORE LISTING INFORMATION](#)

For More Information Contact:

GREG ROBERTS | 816.412.7384 | groberts@blockandco.com

PHIL PECK, CCIM | 816.412.7364 | ppeck@blockandco.com

Exclusive Agents





WAREHOUSE BUILDING

9801 E. 56th Street, Raytown, Missouri

FOR SALE

AERIAL



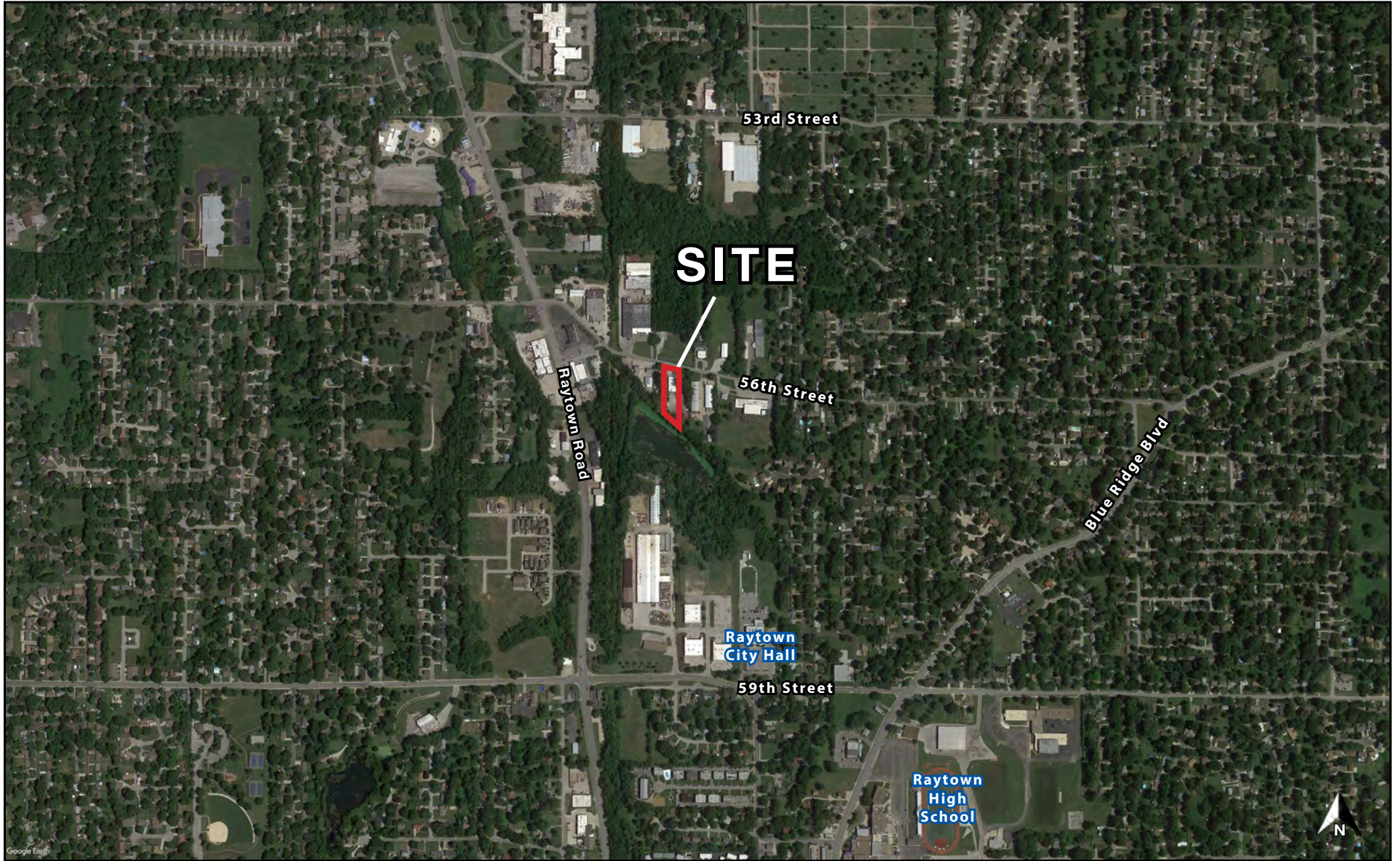


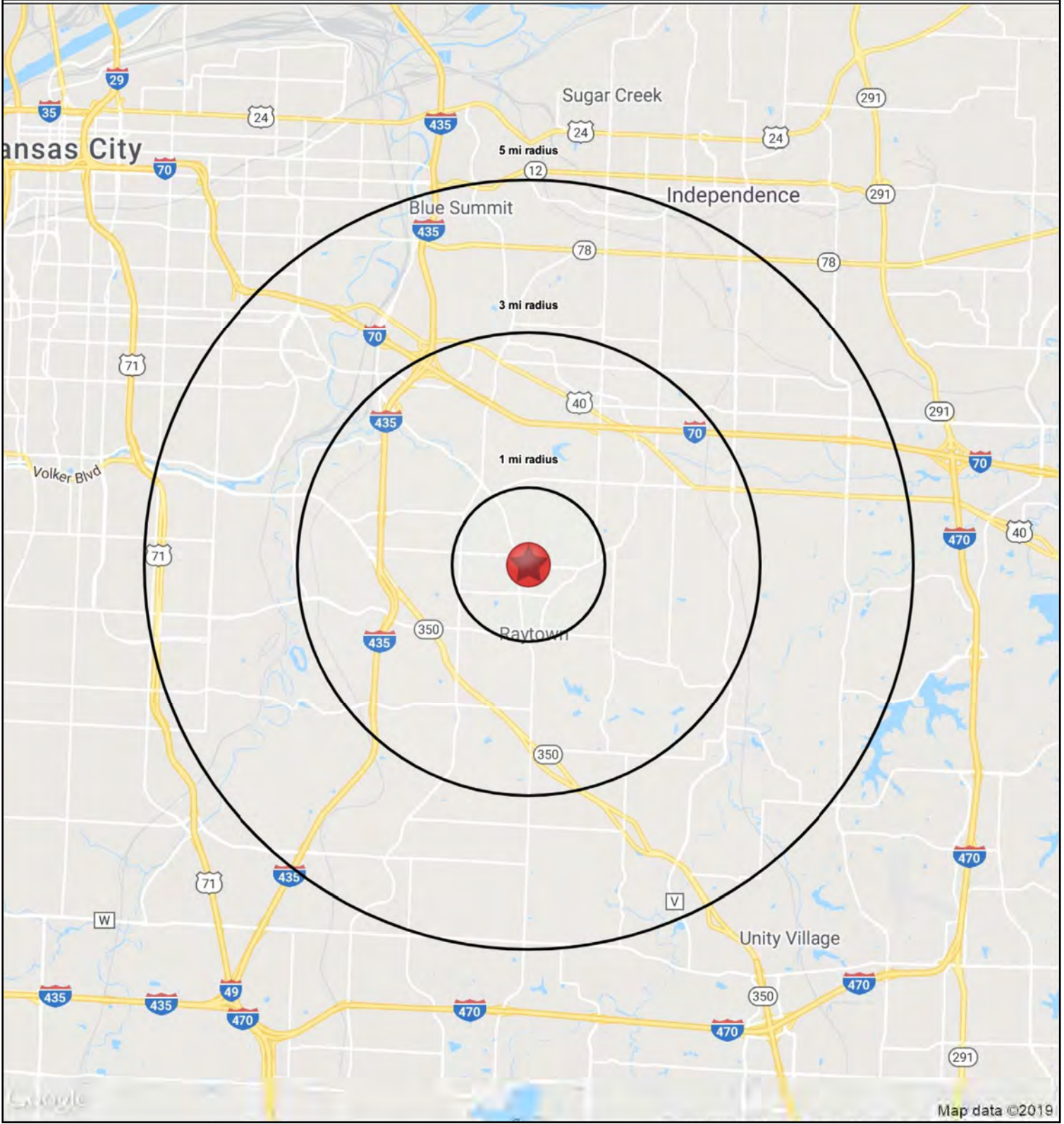
WAREHOUSE BUILDING

9801 E. 56th Street, Raytown, Missouri

FOR SALE

AERIAL







WAREHOUSE BUILDING

9801 E. 56th Street, Raytown, Missouri

**FOR
SALE**

HS1

9801 E. 56th Street		1 mi radius	3 mi radius	5 mi radius
Raytown, MO 64133				
POPULATION	2019 Estimated Population	8,413	53,912	146,376
	2024 Projected Population	8,375	54,507	150,977
	2010 Census Population	8,386	54,415	146,580
	2000 Census Population	8,818	54,409	151,550
	Projected Annual Growth 2019 to 2024	-	0.2%	0.6%
	Historical Annual Growth 2000 to 2019	-0.2%	-	-0.2%
	2019 Median Age	39.5	40.1	40.2
HOUSEHOLDS	2019 Estimated Households	3,582	23,894	64,475
	2024 Projected Households	3,529	23,935	65,961
	2010 Census Households	3,360	22,832	61,166
	2000 Census Households	3,782	23,206	63,258
	Projected Annual Growth 2019 to 2024	-0.3%	-	0.5%
	Historical Annual Growth 2000 to 2019	-0.3%	0.2%	0.1%
RACE AND ETHNICITY	2019 Estimated White	67.1%	64.3%	56.8%
	2019 Estimated Black or African American	22.7%	26.8%	34.2%
	2019 Estimated Asian or Pacific Islander	1.6%	1.6%	1.5%
	2019 Estimated American Indian or Native Alaskan	0.5%	0.5%	0.5%
	2019 Estimated Other Races	8.0%	6.9%	7.0%
	2019 Estimated Hispanic	8.2%	7.3%	7.6%
INCOME	2019 Estimated Average Household Income	\$59,409	\$64,207	\$61,359
	2019 Estimated Median Household Income	\$50,831	\$54,044	\$51,018
	2019 Estimated Per Capita Income	\$25,487	\$28,560	\$27,098
EDUCATION (AGE 25+)	2019 Estimated Elementary (Grade Level 0 to 8)	2.9%	2.5%	2.9%
	2019 Estimated Some High School (Grade Level 9 to 11)	6.2%	6.1%	8.2%
	2019 Estimated High School Graduate	32.2%	34.9%	34.9%
	2019 Estimated Some College	26.9%	27.1%	26.0%
	2019 Estimated Associates Degree Only	8.6%	6.9%	7.1%
	2019 Estimated Bachelors Degree Only	16.0%	14.7%	13.8%
	2019 Estimated Graduate Degree	7.2%	7.7%	7.1%
BUSINESS	2019 Estimated Total Businesses	331	1,830	3,962
	2019 Estimated Total Employees	3,209	22,168	49,612
	2019 Estimated Employee Population per Business	9.7	12.1	12.5
	2019 Estimated Residential Population per Business	25.4	29.5	36.9

