

OFFICE/RETAIL FOR LEASE

1958 Atwood Avenue

Madison, WI

Table of Contents

Property Details.....	Pg. 2
Floor Plan	Pg. 3
Suite 111 — Floor Plan	Pg. 4
Suite 113— Floor Plan	Pg. 5
Aerial & Neighbors.....	Pg. 6
Location & Demographics.....	Pg. 7
Broker Disclosure	Pg. 8

FOR DETAILED INFORMATION CONTACT:

Jenny Lisak
O: 608.729.1808
C: 608.513.5447
jlisak@keycomre.com

Mallory Rekoske
O: 608.729.1803
C: 608.469.0384
mrekoske@keycomre.com

Key Commercial Real Estate LLC
608-729-1800 | www.keycomre.com





Property Details

OVERVIEW

New construction office or retail space available for lease on Madison's near east side in the popular Schenk-Atwood neighborhood. Ability to design your own space with impressive storefront glass, 13 foot ceiling heights, shared common area restrooms and covered parking. Prime location offers exceptional walkability and wide variety of food and entertainment in close proximity.

HIGHLIGHTS

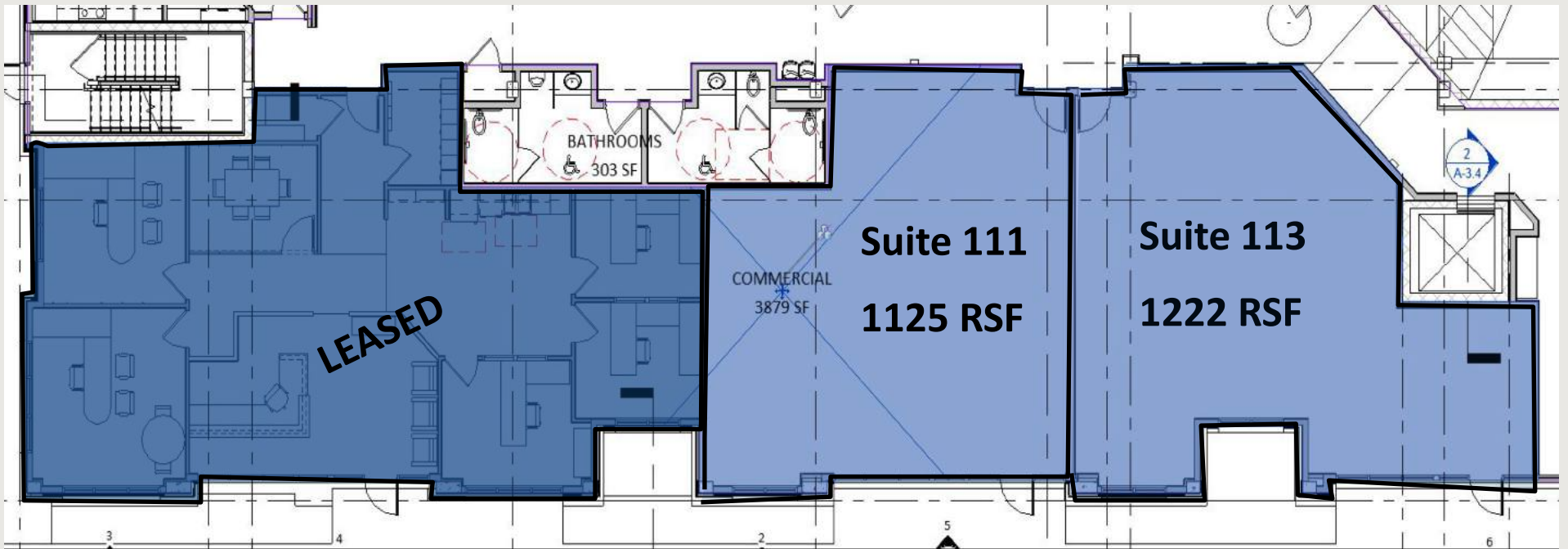
- Annual Lease Rate: \$18.00 NNN/SF
- NNN Estimates: \$6.50/SF
- Minimum Term: 5 years
- Available Suites:

STE 111: 1125 SF ***Suites can be combined
for a total of 2,347 SF*
STE 113: 1222 SF

Parking available for lease for \$100/month/stall



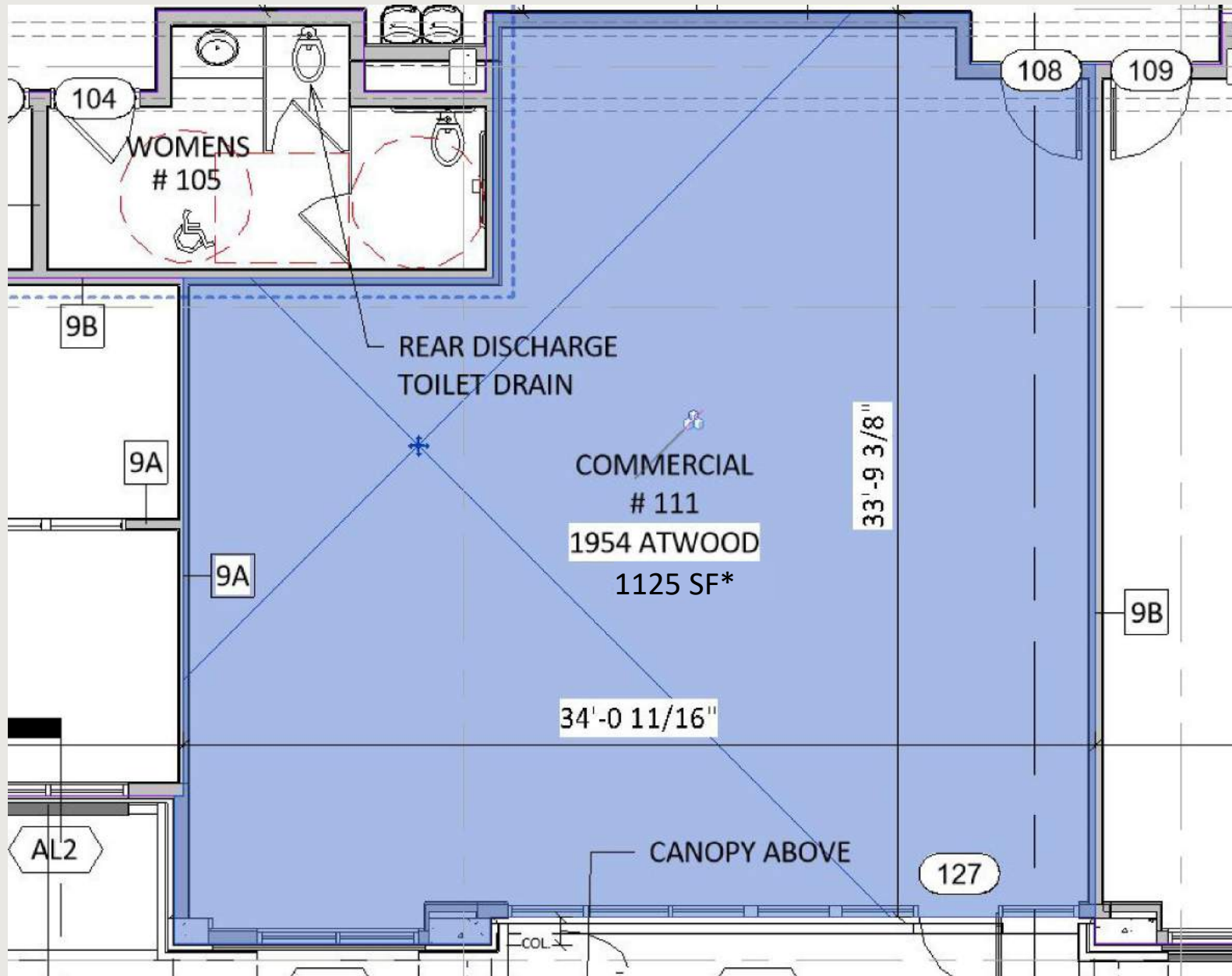
Floor Plan



* Common area restrooms to be shared by commercial tenants and included in load factor



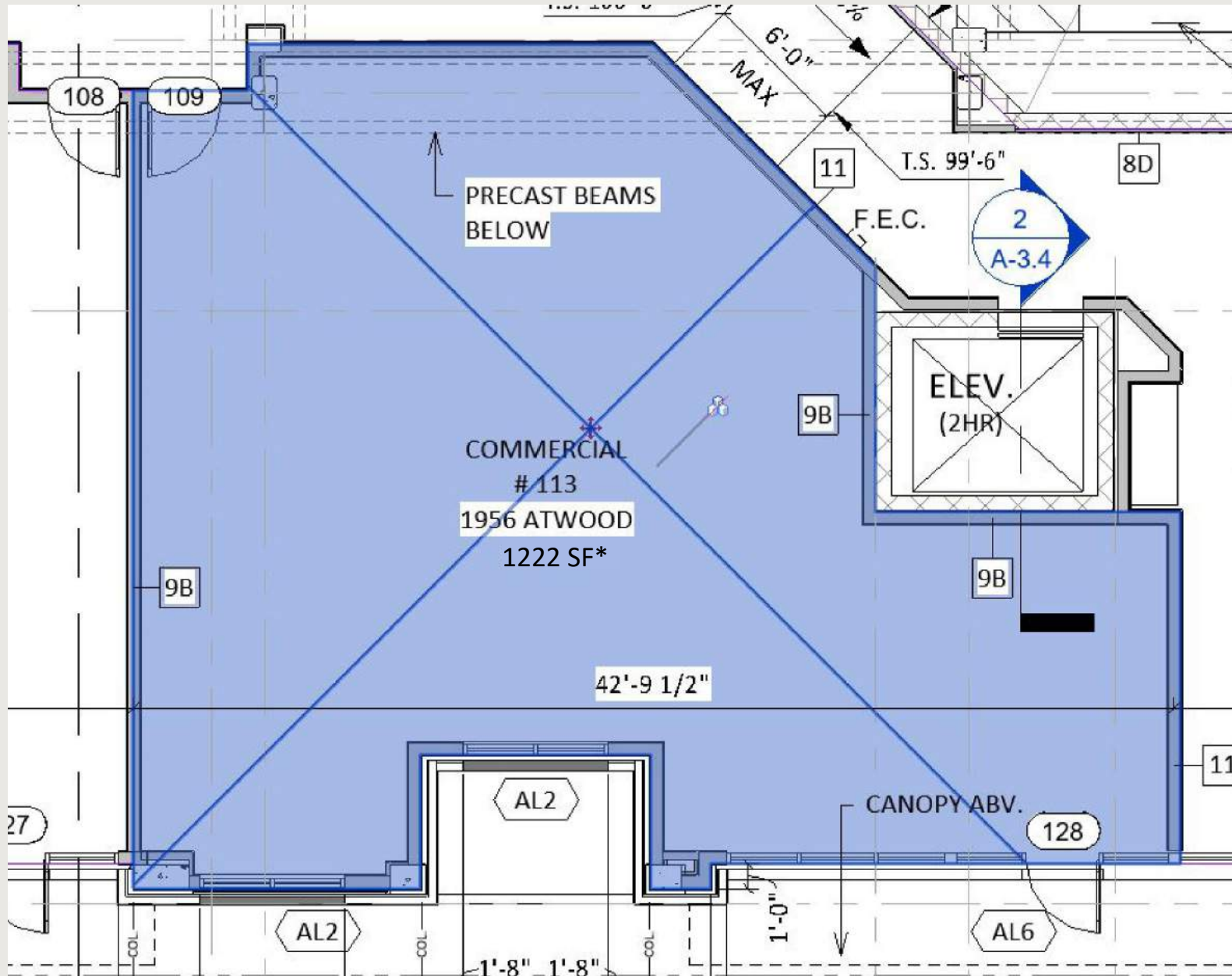
Suite 111 — Floor Plan



* Common area restrooms to be shared by commercial tenants and included in load factor



Suite 113 — Floor Plan



* Common area restrooms to be shared by commercial tenants and included in load factor

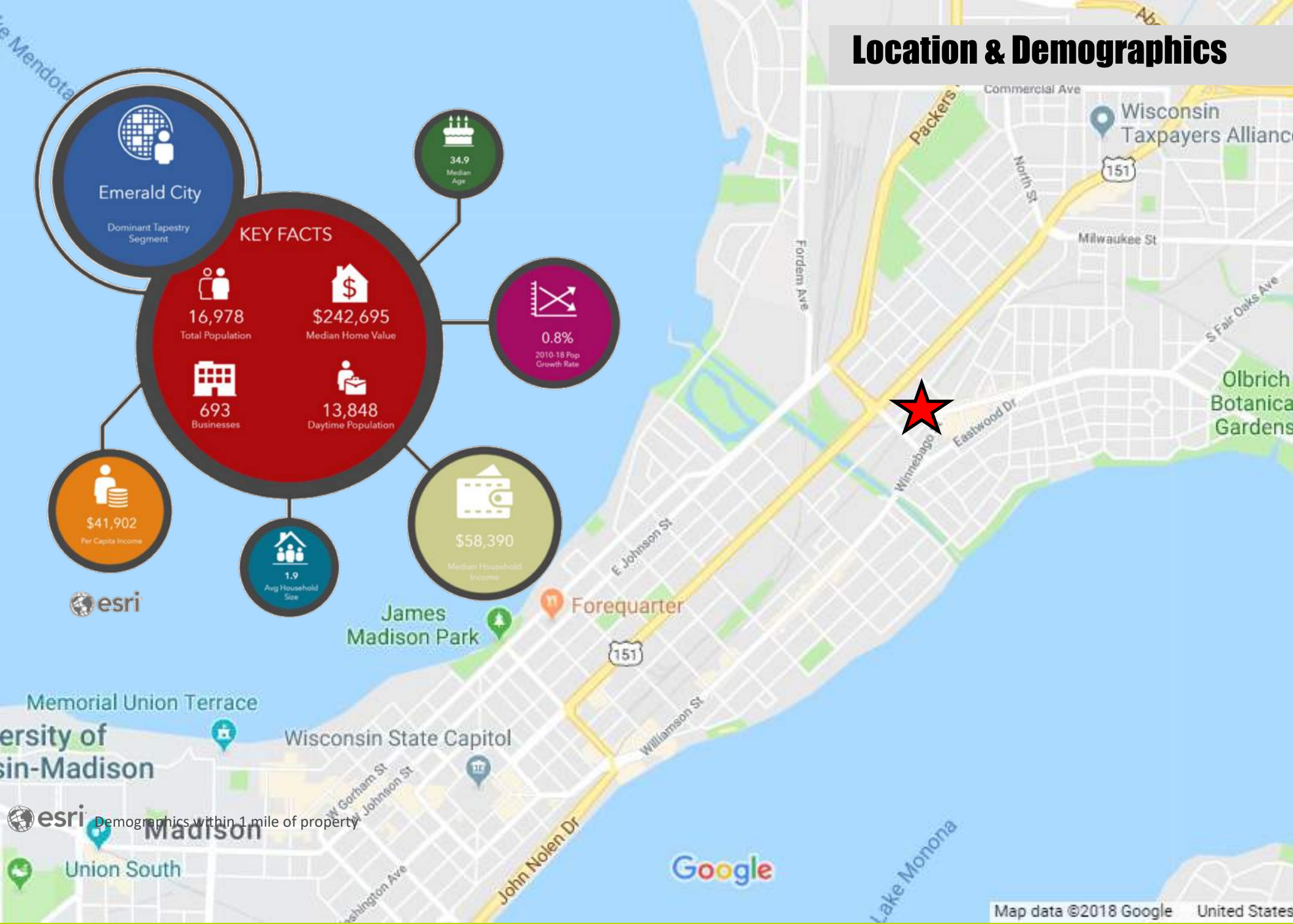
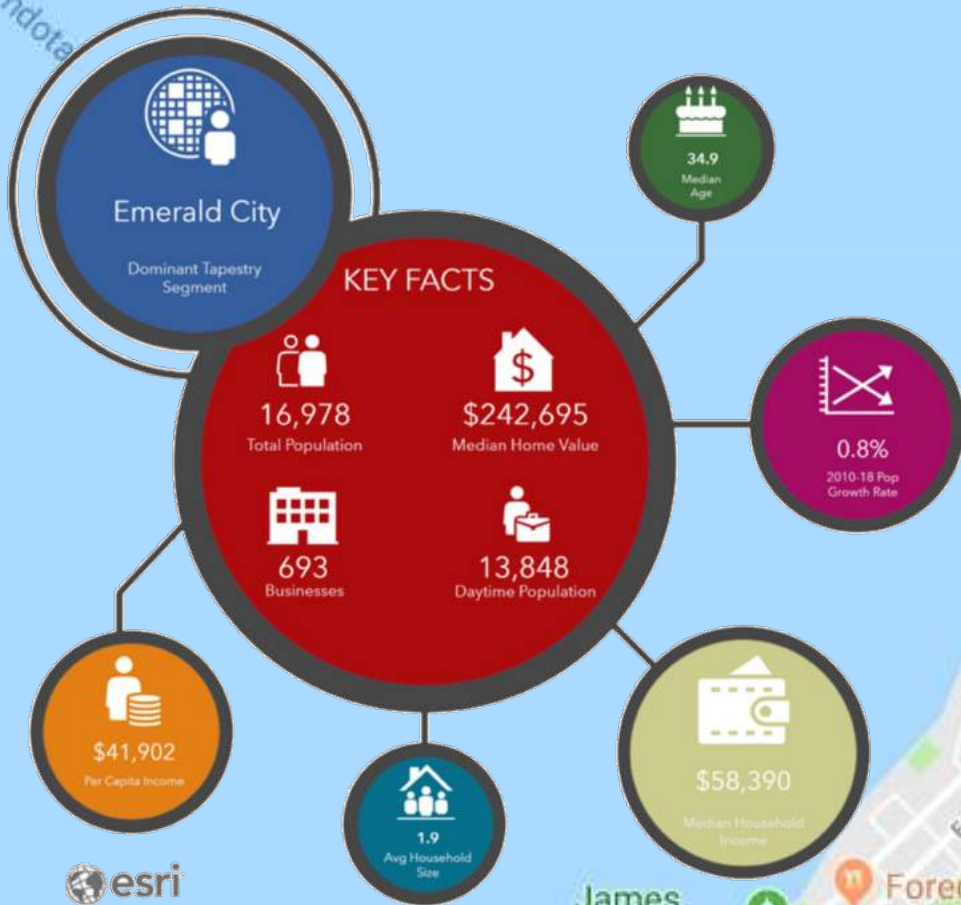


Aerial & Neighbors



Imagery ©2020 Google, Imagery ©2020 Maxar Technologies, Map data ©2020 United States

Location & Demographics



DISCLOSURE TO NON-RESIDENTIAL CUSTOMERS

1 Prior to negotiating on your behalf the brokerage firm, or an agent associated with the firm, must provide you the
2 following disclosure statement:

3 **DISCLOSURE TO CUSTOMERS** You are a customer of the brokerage firm (hereinafter Firm). The Firm is either an agent
4 of another party in the transaction or a subagent of another firm that is the agent of another party in the transaction. A
5 broker or a salesperson acting on behalf of the Firm may provide brokerage services to you. Whenever the Firm is
6 providing brokerage services to you, the Firm and its brokers and salespersons (hereinafter Agents) owe you, the
7 customer, the following duties:

8 (a) The duty to provide brokerage services to you fairly and honestly.
9 (b) The duty to exercise reasonable skill and care in providing brokerage services to you.
10 (c) The duty to provide you with accurate information about market conditions within a reasonable time if you request
11 it, unless disclosure of the information is prohibited by law.
12 (d) The duty to disclose to you in writing certain Material Adverse Facts about a property, unless disclosure of the
13 information is prohibited by law (see lines 42-51).

14 (e) The duty to protect your confidentiality. Unless the law requires it, the Firm and its Agents will not disclose your
15 confidential information or the confidential information of other parties (see lines 23-41).

16 (f) The duty to safeguard trust funds and other property held by the Firm or its Agents.
17 (g) The duty, when negotiating, to present contract proposals in an objective and unbiased manner and disclose the
18 advantages and disadvantages of the proposals.

19 Please review this information carefully. An Agent of the Firm can answer your questions about brokerage services,
20 but if you need legal advice, tax advice, or a professional home inspection, contact an attorney, tax advisor, or home
21 inspector. This disclosure is required by section 452.135 of the Wisconsin statutes and is for information only. It is a
22 plain-language summary of the duties owed to a customer under section 452.133(1) of the Wisconsin statutes.

23 **CONFIDENTIALITY NOTICE TO CUSTOMERS** The Firm and its Agents will keep confidential any information given to the
24 Firm or its Agents in confidence, or any information obtained by the Firm and its Agents that a reasonable person
25 would want to be kept confidential, unless the information must be disclosed by law or you authorize the Firm to
26 disclose particular information. The Firm and its Agents shall continue to keep the information confidential after the
27 Firm is no longer providing brokerage services to you.

28 The following information is required to be disclosed by law:

29 1. Material Adverse Facts, as defined in Wis. Stat. § 452.01(5g) (see lines 42-51).

30 2. Any facts known by the Firm or its Agents that contradict any information included in a written inspection
31 report on the property or real estate that is the subject of the transaction.

32 To ensure that the Firm and its Agents are aware of what specific information you consider confidential, you may
33 list that information below (see lines 35-41) or provide that information to the Firm or its Agents by other means. At a
34 later time, you may also provide the Firm or its Agents with other Information you consider to be confidential.

35 CONFIDENTIAL INFORMATION:

36

37

38 **NON-CONFIDENTIAL INFORMATION** (the following information may be disclosed by the Firm and its Agents):

39

40

41 _____ (Insert information you authorize to be disclosed, such as financial qualification.)

tion.)

42 DEFINITION OF MATERIAL ADVERSE FACTS

43 A "Material Adverse Fact" is defined in Wis. Stat. § 452.01(5g) as an Adverse Fact that a party indicates
44 significance, or that is generally recognized by a competent licensee as being of such significance to
45 party, that it affects or would affect the party's decision to enter into a contract or agreement concerning
46 or affects or would affect the party's decision about the terms of such a contract or agreement.

47 An "Adverse Fact" is defined in Wis. Stat. § 452.01(1e) as a condition or occurrence that a competent licensee
48 generally recognizes will significantly and adversely affect the value of the property, significantly reduce
49 integrity of improvements to real estate, or present a significant health risk to occupants of the property, condition
50 that indicates that a party to a transaction is not able to or does not intend to meet his or her obligation under a
51 contract or agreement made concerning the transaction.

52 **NOTICE ABOUT SEX OFFENDER REGISTRY** You may obtain information about the sex offender registry
53 registered with the registry by contacting the Wisconsin Department of Corrections on the
54 <http://www.doc.wi.gov> or by telephone at 608-240-5830.

No representation is made as to the legal validity of any provision or the adequacy of any provision in any specific transaction.
Copyright © 2016 by Wisconsin REALTORS® Association

Key Commercial Real Estate LLC, 211 S. Paterson Street, Suite 320 Madison, WI 53703
Deborah Ernsland

Phone: (608)729-1800
Produced with zipForm® by zipLogix 18070 Fifteen Mile Road, Fraser, Michigan 48026

closure

www.zipLogix.com

Broker Disclosure