



"Innovative Solutions at Work"

RURAL/RESIDENTIAL LAND

HEAD-O-LAKE RD., OTTAWA LAKE, MI 49267



OFFERING SUMMARY

Sale Price: \$240,000

Lot Size: 30.0 Acres
May be split
(2 access points)

Intersection: Head-O-Lake/Roloff Rd.

Parcel #: 5815-017-019-02

Zoning: Agricultueral

County: Monroe

PROPERTY OVERVIEW

Great topography
Excellent view
Whiteford schools
South West of Legacy Golf Course
Attractive surrounding homes
Excellent for home sites

UTILITIES

Electric: Detroit Edison
Gas: Propane
Water: Well
Sewer: Septic

DEMOGRAPHICS

	1 MILE	5 MILES	10 MILES
Total Households	126	11,540	86,707
Total Population	362	30,563	215,344
Average HH Income	\$69,091	\$86,667	\$74,394

The information contained herein is from sources deemed reliable, but no warranty or representation is made as to accuracy thereof. It is subject to correction of errors, omissions, change of price prior to sale or withdrawal from market, all without notice. Further, no warranty or representation is made in regard to any environmental condition that may or may not exist.

JERRY MILLER, CCIM
419.392.6835
jmillermiller@millerdanberry.com

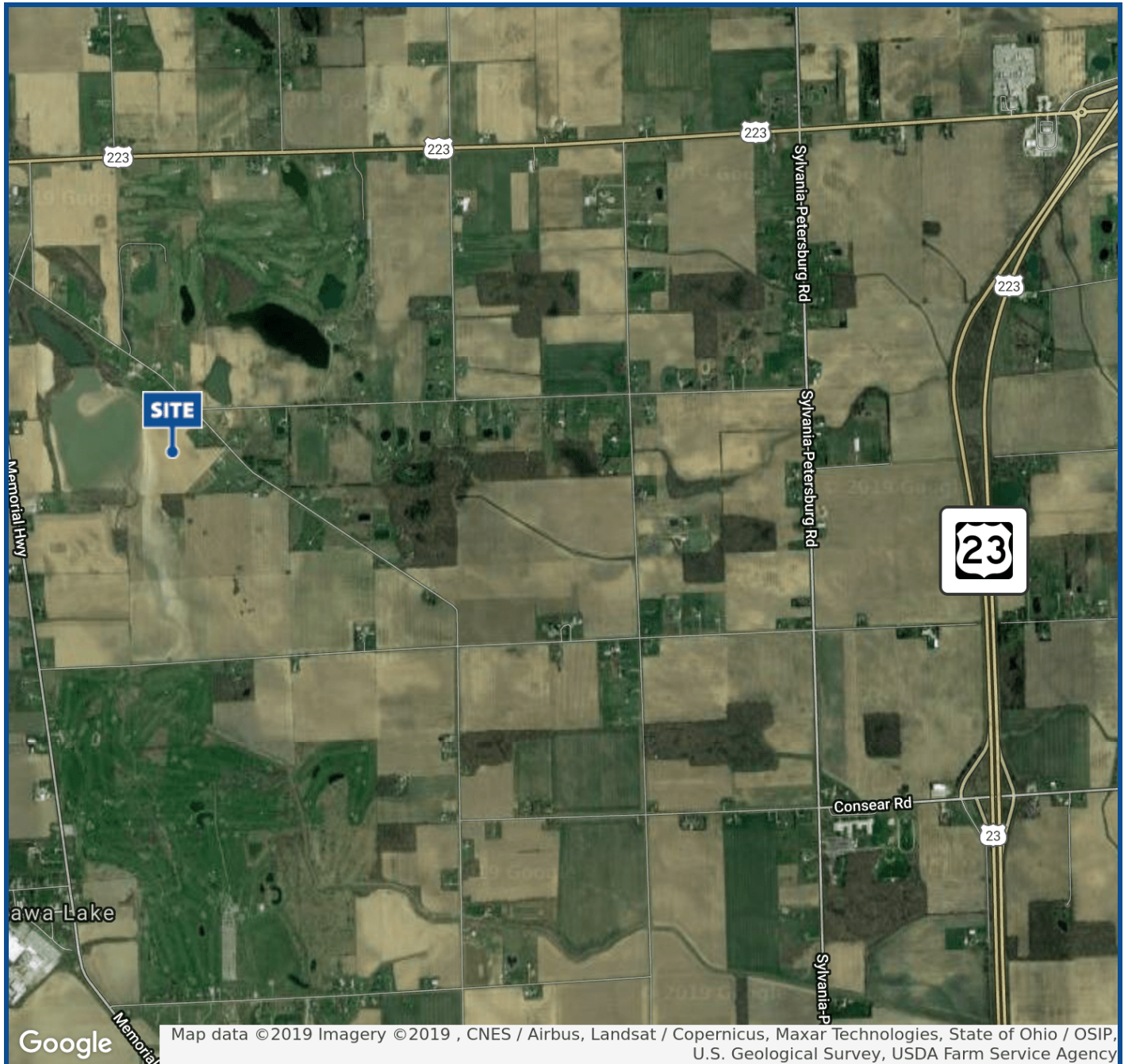
1656 Henthorne Rd Suite 200, Maumee, OH 43537 | 419.877.7777 | www.millerdanberry.com



"Innovative Solutions at Work"

RURAL/RESIDENTIAL LAND

HEAD-O-LAKE RD., OTTAWA LAKE, MI 49267



JERRY MILLER, CCIM

419.392.6835

jmiller@millerdanberry.com

1656 Henthorne Rd Suite 200, Maumee, OH 43537 | 419.877.7777 | www.millerdanberry.com