

28371
DAVIS #103
WARRENVILLE

FOR SALE

28371 Davis Parkway

SUMMARY

The subject property, located at 28371 Davis Parkway, Unit #103 is an office condo located within the Cantera Lakes Office Park in Warrenville, Illinois. The property features private window lined offices, a media/conference room, kitchen and finished partial second level. The property is located in desirable park-like setting with easy access to I-88 and surrounding retail/restaurants.

HIGHLIGHTS

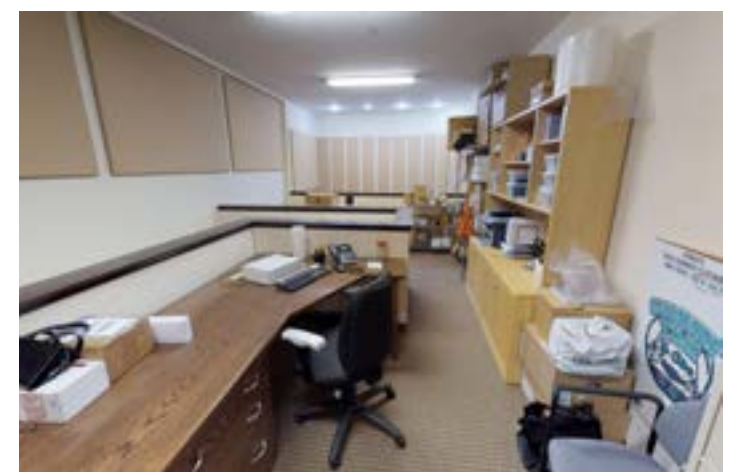
- Contemporary open glass office concept with high end finishes
- Strategically located minutes from I-88
- Ideal for medical or professional office use
- Abundant parking

PROPERTY SPECIFICATIONS

BUILDING SIZE	± 9,533 SF
UNIT SIZE	± 3,340 SF
LOT SIZE	9.09 ACRES
PARKING	PAVED PARKING LOT
STORIES	1
YEAR BUILT	2005
ASKING PRICE	\$979,000



PROPERTY PHOTOS



FLOOR PLAN

28371 Davis Parkway

FLOOR PLAN





28371 DAVIS PARKWAY

PROPERTY LOCATION

Located 2-miles northwest of the Downtown Naperville, the subject property is located within a ± 9 acre business lot adjacent to the Cantera Commons retail complex. 28371 Davis Parkway is easily accessible via the I-88 Expressway with an interchange located one-mile away. The subject property is surrounded by many bars, restaurants and stores.



Two miles from Naperville Metra Station



One mile from the I-88 Expressway entrance



One mile from Lifetime Fitness



Many bars and restaurants within 1-mile

LOCAL AREA AMENITIES



Lifetime Fitness



Eddie Merlot's



Cress Creek Country Club



Rock Bottom Restaurant

All information contained herein is from sources deemed reliable and is submitted subject to errors, omissions and to change of price or terms without notice.





WARRENVILLE
 —
 OFFICE
 OPPORTUNITY



CONTACT
 —
 **NelsonHill**
 Creating Maximum Value in Real Estate

BRIAN C. ETTEN
 312.781.6499
BEtten@NelsonHill.com