



WOODCOURT OFFICE & MEDICAL SPACE FOR LEASE

20251-20315 VENTURA BOULEVARD, WOODLAND HILLS, CA 91364

Bruce Frasco
Senior Managing Director
D 818.304.8389 C 818.298.2900
Email bfrasco@cag-re.com

Commercial Asset Group
1801 Century Park East, Suite 1550
Los Angeles, CA 90067
P 310.275.8222 F 310.275.8223

cag | COMMERCIAL
ASSET GROUP



OFFICE & MEDICAL SPACE FOR LEASE - UNDER NEW OWNERSHIP/MANAGEMENT

20251-20315 VENTURA BOULEVARD, WOODLAND HILLS, CA 91364

Highlights

- Full Service Gross with Generous Tenant Improvement Allowances
- Property has Heavy Landscaping & Water Features
- Open, Flowing Design
- Flexible Floorplans and Lease Terms
- Plenty of Services & Restaurants Nearby
- Approved Medical Space Available
- Within Close Proximity to All Major Transportation Corridors
- Prominent Ventura Blvd Address
- Close Proximity to Tarzana Hospital
- Renovations Underway
- On Site Management

Suites Available

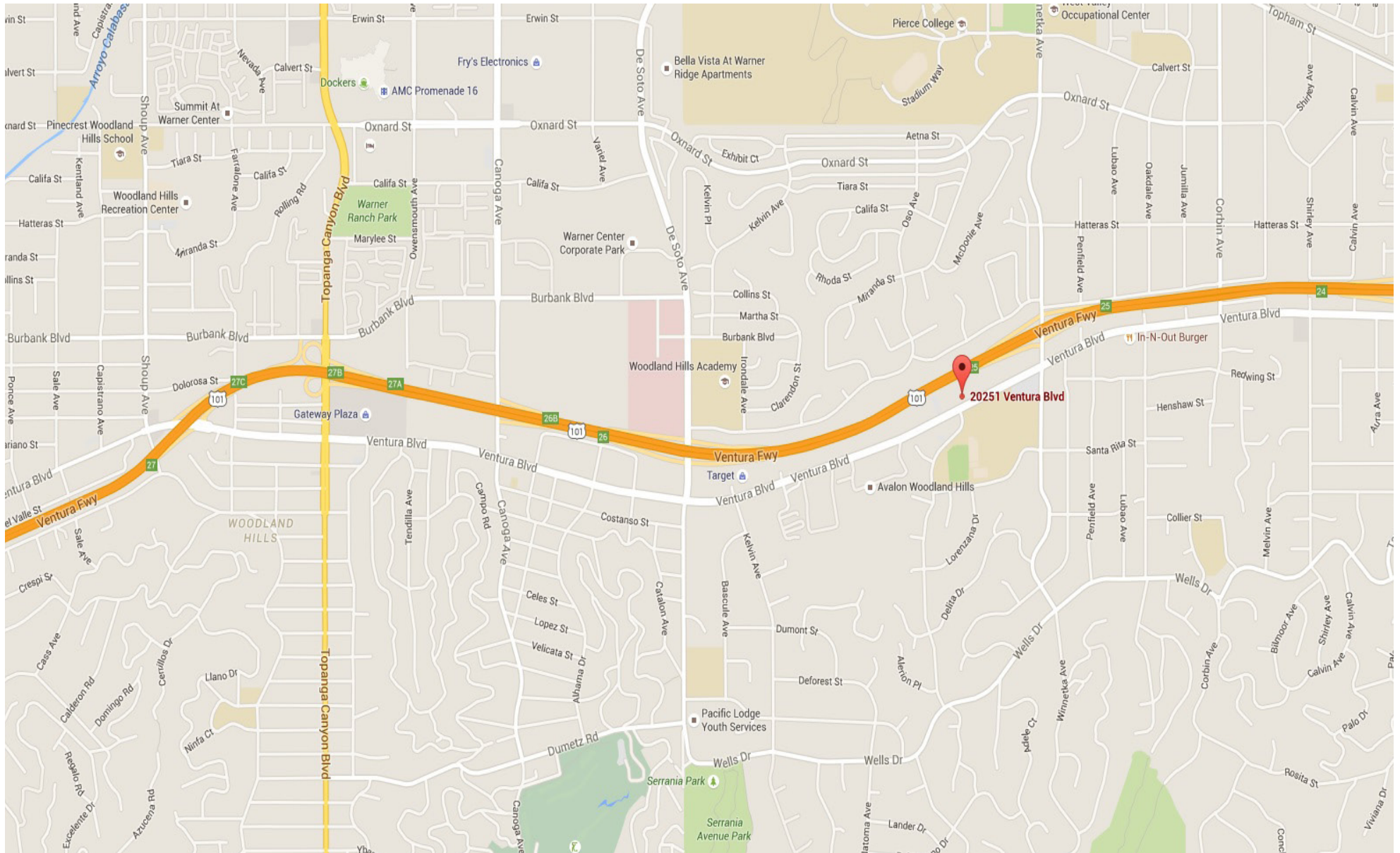
- | | |
|-----------------|--|
| 121: | +/- 1,195 SF (Medical) |
| 340: | +/- 860 SF (Medical) - Private HC Restroom |
| 20251 E: | +/- 1,865 SF (Office) |
| 20315: | +/- 1,664 SF - Exquisite Medical Ready to Occupy |

Property Information

- | | |
|---------------------|--|
| Rental Rate: | \$2.50-\$2.95 PSF FSG (Medical)
\$1.90 PSF FSG (Office) |
| Parking: | 5/1,000 SF with 2 Hour Free Visitor Parking
\$44/66 Per Space Per Month |

OFFICE & MEDICAL SPACE FOR LEASE - MAP

20251-20315 VENTURA BOULEVARD, WOODLAND HILLS, CA 91364



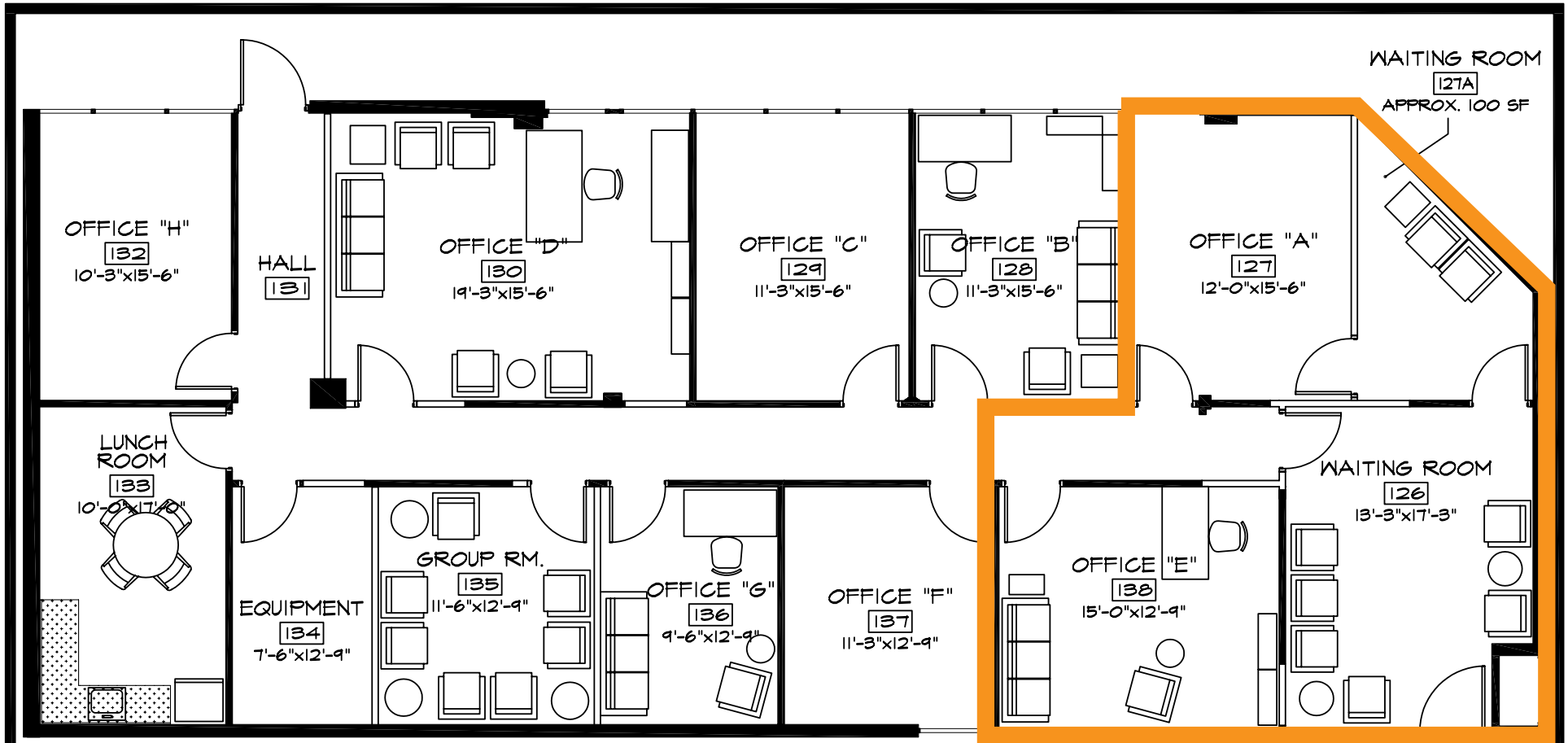
OFFICE & MEDICAL SPACE FOR LEASE - WOODCOURT OFFICE SAMPLING

20251-20315 VENTURA BOULEVARD, WOODLAND HILLS, CA 91364



FLOORPLAN - SUITE 121

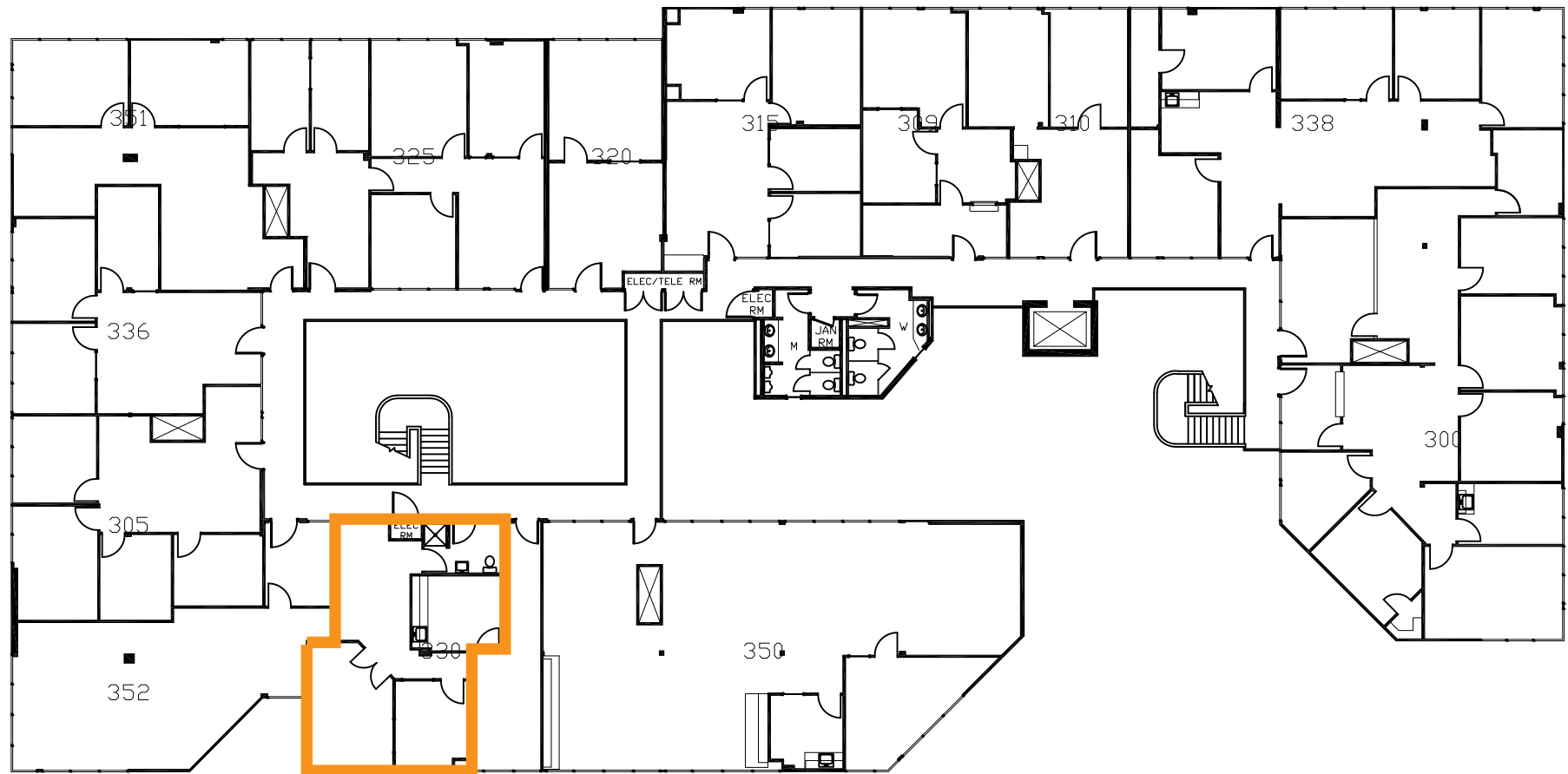
20251-20315 VENTURA BOULEVARD, WOODLAND HILLS, CA 91364



1,195 RSF

FLOORPLAN - SUITE 338

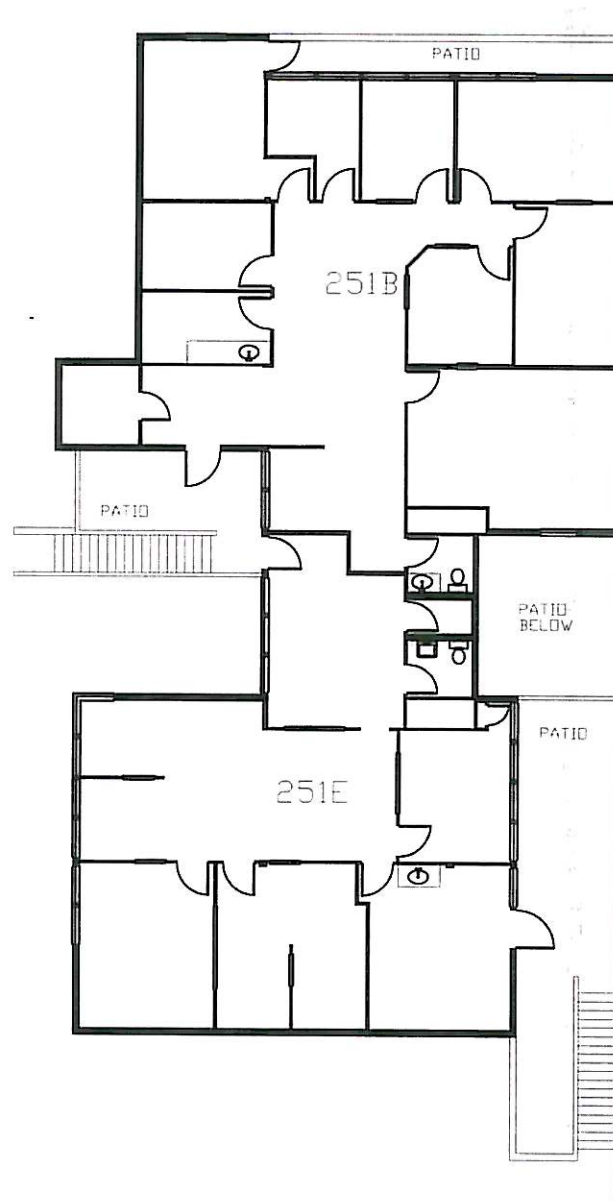
20251-20315 VENTURA BOULEVARD, WOODLAND HILLS, CA 91364



860 RSF

FLOORPLAN - SUITE 20251 E

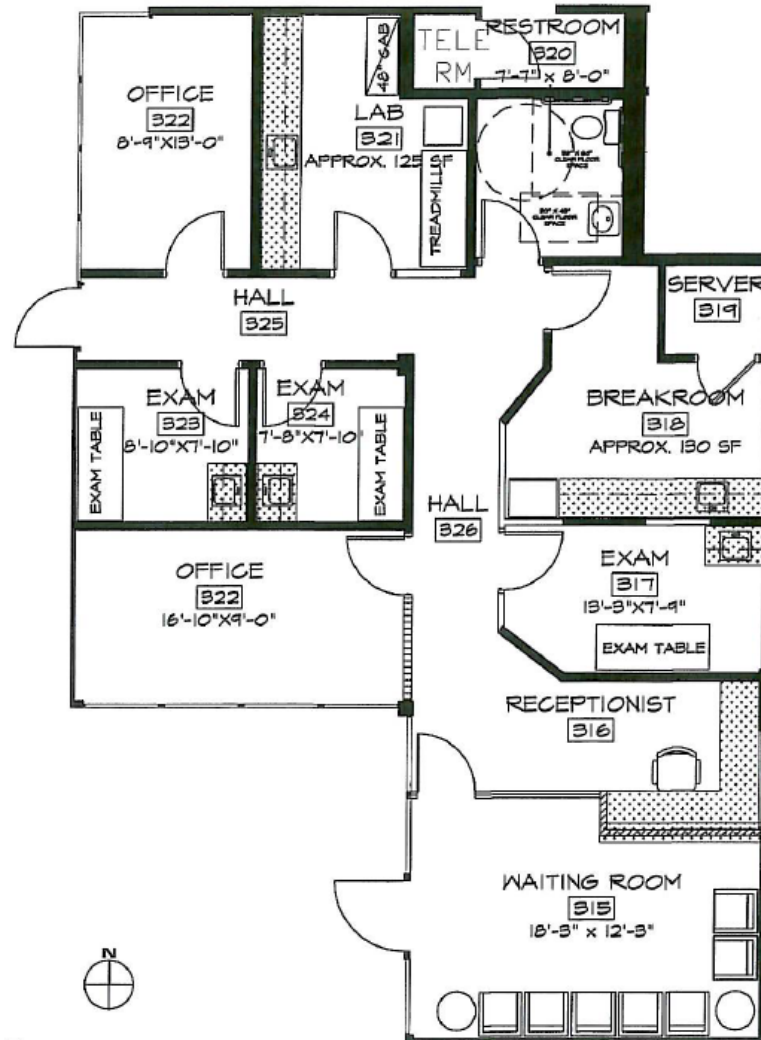
20251-20315 VENTURA BOULEVARD, WOODLAND HILLS, CA 91364



1,865 RSF
PRIVATE PATIO
RESTROOM

FLOORPLAN - SUITE 20315 A

20251-20315 VENTURA BOULEVARD, WOODLAND HILLS, CA 91364





For more information, please call.



Bruce Frasco
Senior Managing Director
D 818.304.8389 C 818.298.2900
Email bfrasco@cag-re.com
Lic 00639403

Commercial Asset Group
1801 Century Park East, Suite 1550
Los Angeles, CA 90067
P 310.275.8222 F 310.275.8223
www.cag-re.com
Lic 01876070

These materials are based on information and content provided by others, which we believe are accurate. No guarantee, warranty or representation is made by Commercial Asset Group, Inc. or its personnel. All interested parties must independently verify accuracy and completeness. As well, any projections, assumptions, opinion, or estimates are used for example only and do not represent the current or future performance of the identified property. Your tax, financial, legal and toxic substance advisors should conduct a careful investigation of the property and its suitability for your needs, including land use limitations. The property is subject to prior lease, sale, change in price, or withdrawal from the market without notice.