

Hollywood Market Square

4150-4152 NE Hancock
Portland, Oregon



Contact

Corine Nussmeier
503.721.2724
corinen@kiddermathews.com

Emily Matza
503.721.2725
ematza@kiddermathews.com

Features

Spaces range from 1,300-25,000 SF

Rent: \$10.00 - \$25.00 PSF/YR, NNN

27,424 cars per day at NE 40th and Sandy

Area tenants include Rite Aid, Tuesday Morning, Trader Joe's, Baja Fresh, 24 Hour Fitness, Whole Foods and many more

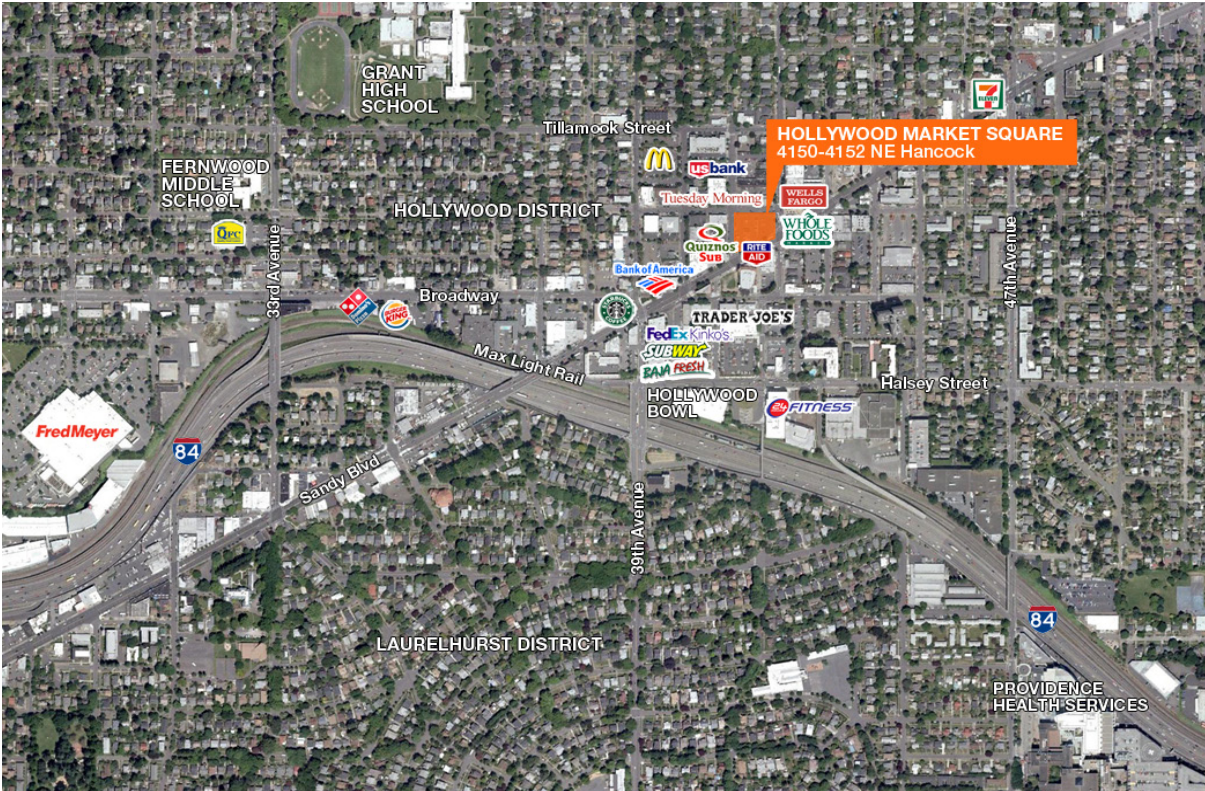
90 parking spaces on the roof

Owners would prefer to re-develop the site to accommodate one or two tenants

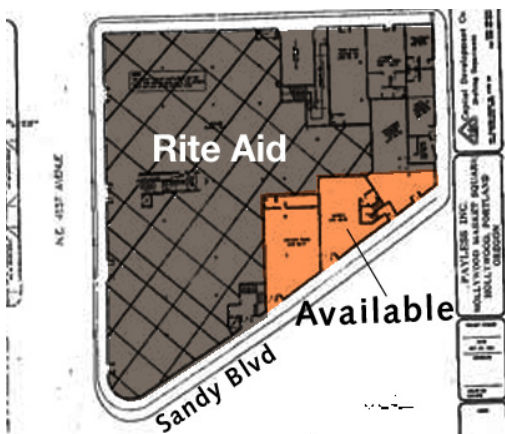
DEMOGRAPHICS

	1 mile	3 miles	5 miles
Population	23,722	199,992	409,399
Average HH Income	\$82,932	\$64,951	\$64,327

Hollywood Market Square

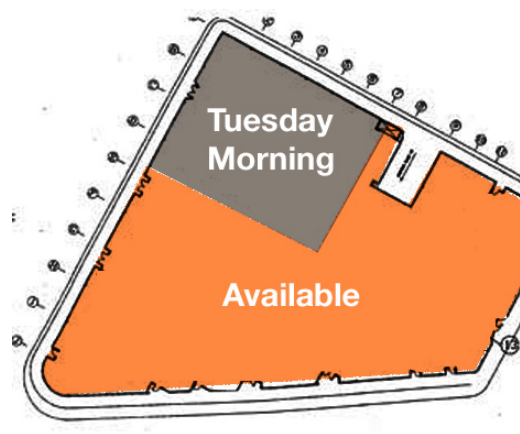


Ground Floor



±5,000 SF Available

Lower Level



±21,000 SF Available

Contact

Corine Nussmeier
503.721.2724
corinen@kiddermathews.com

Emily Matza
503.721.2725
ematza@kiddermathews.com