

880 SF RETAIL / SERVICE ENDCAP SPACE AVAILABLE FOR LEASE

372-394 MID RIVERS MALL DRIVE | SAINT PETERS, MISSOURI 63376



880 SF RETAIL / SERVICE ENDCAP AVAILABLE

- 394 Mid Rivers Mall Dr
- Located within St. Peters' premier retail corridor just north of Mexico Road
- Attractive retail strip center with excellent Mid Rivers Mall Drive visibility and ample parking
- Prominent signage available on two sides of the building
- Traffic volume on Mid Rivers Mall Drive: over 28,000 vehicles per day
- **LEASE RATE: \$1,400.00 PER MO. + NNN**

For additional information, please contact:

TONY GIARRATANO

tony@hutkin.com
314.708.4922 (o)
314.276.2352 (c)

BO KEEFER

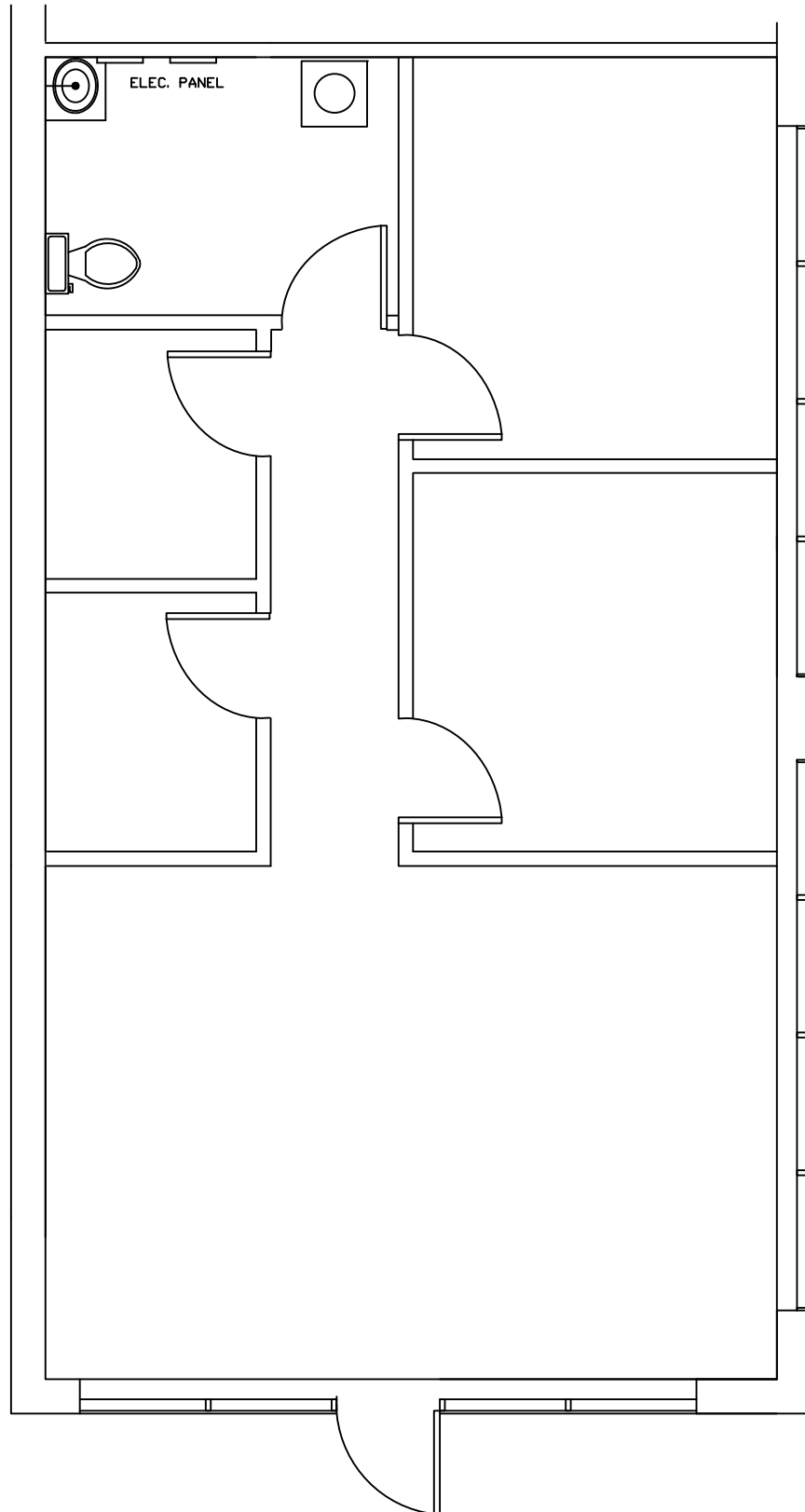
bkeeper@hutkin.com
314.708.1258 (o)
314.973.1242 (c)

HUTKIN
DEVELOPMENT COMPANY

10829 OLIVE BOULEVARD, SUITE 200
ST. LOUIS, MISSOURI 63141
314.872.9140 PHONE
314.872.9001 FAX
WWW.HUTKIN.COM

880 SF RETAIL / SERVICE ENDCAP SPACE AVAILABLE FOR LEASE

372-394 MID RIVERS MALL DRIVE | SAINT PETERS, MISSOURI 63376



394 MID RIVERS MALL DRIVE
880 SF

880 SF RETAIL / SERVICE ENDCAP SPACE AVAILABLE FOR LEASE

372-394 MID RIVERS MALL DRIVE | SAINT PETERS, MISSOURI 63376



DEMOGRAPHICS	1 MILE	3 MILE	5 MILE	TRAFFIC COUNTS (AADT)
POPULATION:	10,981	63,591	170,850	MID RIVERS MALL DR: 28,153
DAYTIME EMPLOYMENT:	5,620	25,594	55,645	
NO. OF HOUSEHOLDS:	4,714	25,189	67,516	
AVG. HH INCOME:	\$98,056	\$122,065	\$132,209	

The information contained herein was obtained from a source we consider to be reliable. While we have no reason to doubt its accuracy, we do not guarantee it. All information is subject to change without notice.