

Baldwin East

Medical/Professional Office

3,058 RSF Available



Property Highlights

- 1300 N Semoran Blvd. Orlando, FL 32807 – Suite 195
- Semoran Boulevard Monument Signage Available (Approx. 50,000 cars per day)
- Ample Parking Available
- Excellent Access, adjacent to SR 408, SR 417 and SR 50
- Close proximity to Orlando International Airport and Downtown Orlando
- Professional Medical Office Suites Available
- Full Service Lease, Janitorial Included
- Professionally Managed
- Onsite Ownership

For Information Contact:

Mike Fess, Faith Pamplin, or Emily Bower

1300 N. Semoran Blvd. – Suite 225, Orlando, FL 32807

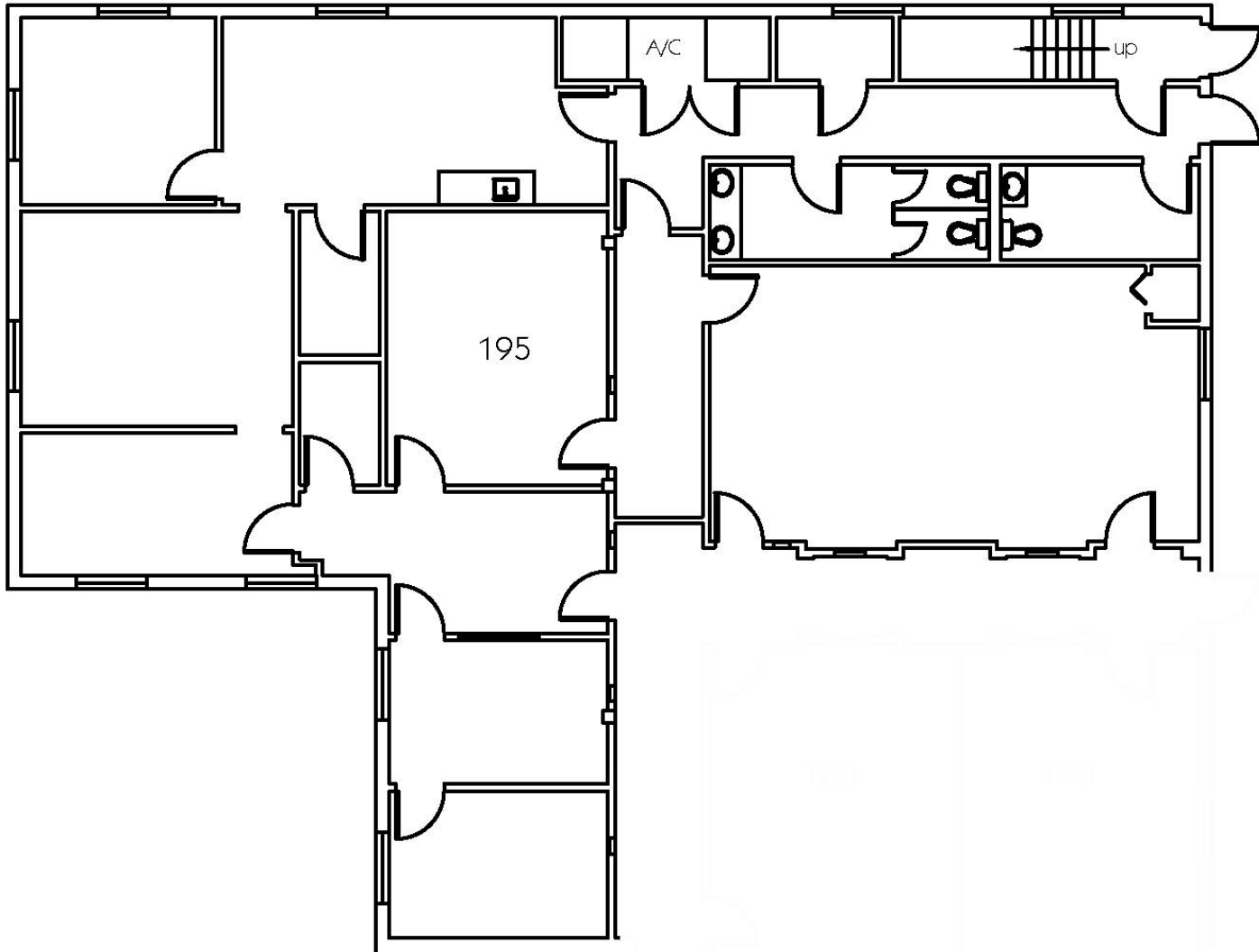
Office: 407.660.4949 | Fax: 407.660.4995

mikefess@equitypartners.net, faithpamplin@equitypartners.net,

emilybower@equitypartners.net

Baldwin East Medical/Professional Office

3,058 RSF Available



For Information Contact:

Mike Fess, Faith Pamplin, or Emily Bower

1300 N. Semoran Blvd. – Suite 225, Orlando, FL 32807

Office: 407.660.4949 | Fax: 407.660.4995

mikefess@equitypartners.net, faithpamplin@equitypartners.net,
emilybower@equitypartners.net