

FOR LEASE

155 Halton Village Circle Greenville, SC 29607



Medical/Office | 3,141 SF

- Well maintained medical/office building
- Suite A available February 2021
- Fronts to Halton Road
- Located less than 1 mile from Prisma Patewood Campus, St. Francis Eastside, and I-385
- Zoned S-1, Greenville County
- Lease rate: \$19.00/SF NNN

Demographics	1 Mile	3 Miles	5 Miles
Total Population:	4,308	49,561	144,038
Average HH Income:	\$63,290	\$69,280	\$70,255

No Warranty Or Representation, Express Or Implied, Is Made As To The Accuracy Of The Information Contained Herein, And The Same Is Submitted Subject To Errors, Omissions, Change Of Price, Rental Or Other Conditions, Prior Sale, Lease Or Financing, Or Withdrawal Without Notice, And Of Any Special Listing Conditions Imposed By Our Principals No Warranties Or Representations Are Made As To The Condition Of The Property Or Any Hazards Contained Therein Are Any To Be Implied.



Map data ©2020 Google

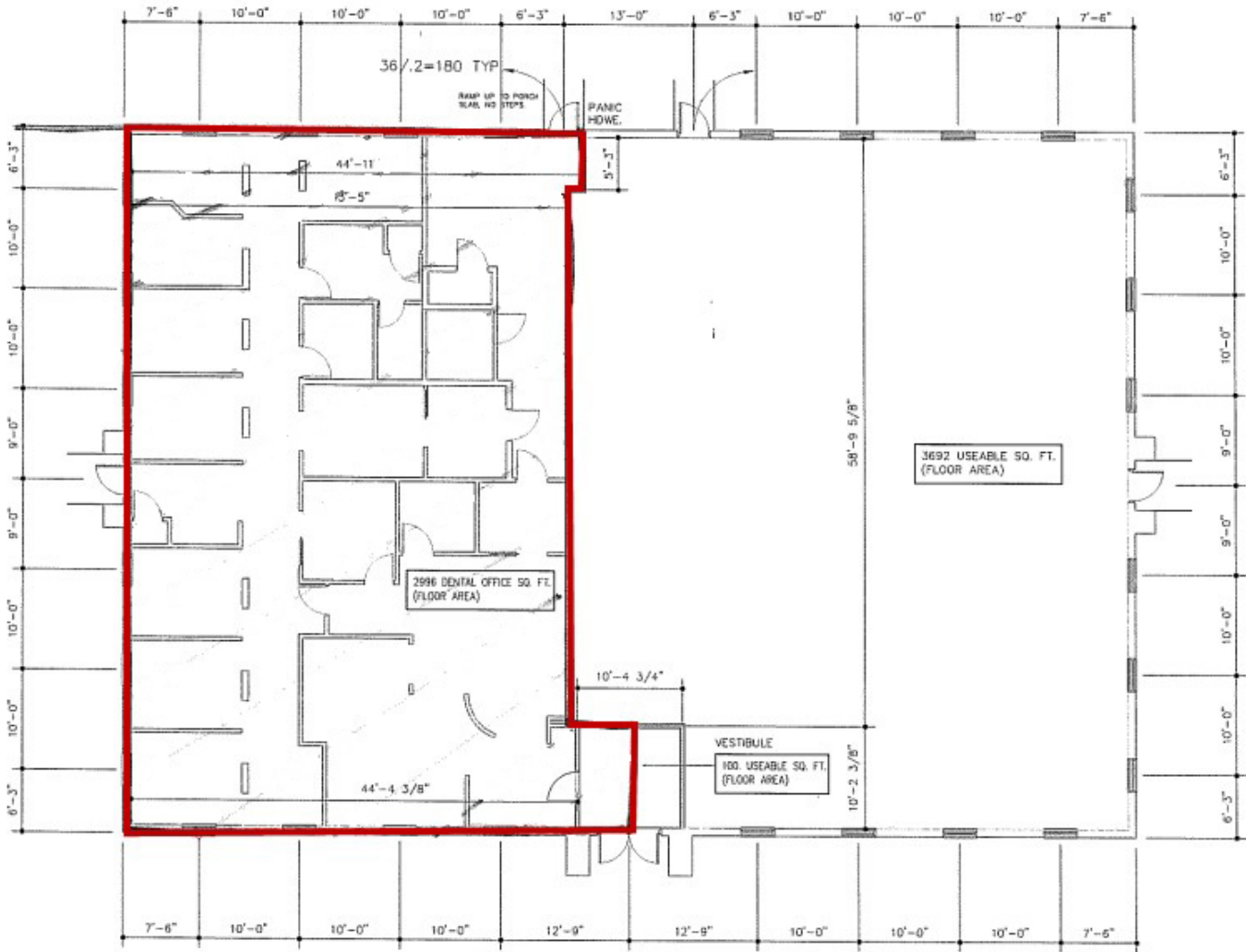
✉ **Alex Campbell**
O: +1 864 678 5984
C: +1 864 901 3869
acampbell@naiearlefurman.com

No Warranty Or Representation, Express Or Implied, Is Made As To The Accuracy Of The Information Contained Herein, And The Same Is Submitted Subject To Errors, Omissions, Change Of Price, Rental Or Other Conditions, Prior Sale, Lease Or Financing, Or Withdrawal Without Notice, And Of Any Special Listing Conditions Imposed By Our Principals No Warranties Or Representations Are Made As To The Condition Of The Property Or Any Hazards Contained Therein Are Any To Be Implied.

📍 **101 E Washington St**
Greenville, SC 29601
naiearlefurman.com

FOR LEASE

155 Halton Village Circle Greenville, SC 29607



FOR LEASE

155 Halton Village Circle Greenville, SC 29607



✉ **Alex Campbell**
O: +1 864 678 5984
C: +1 864 901 3869
acampbell@naiearlefurman.com

No Warranty Or Representation, Express Or Implied, Is Made As To The Accuracy Of The Information Contained Herein, And The Same Is Submitted Subject To Errors, Omissions, Change Of Price, Rental Or Other Conditions, Prior Sale, Lease Or Financing, Or Withdrawal Without Notice, And Of Any Special Listing Conditions Imposed By Our Principals. No Warranties Or Representations Are Made As To The Condition Of The Property Or Any Hazards Contained Therein Are Any To Be Implied.

NAI Earle Furman