

**FOR LEASE
RETAIL/CREATIVE OFFICE**

2624

**WEST SUNSET BLVD
LOS ANGELES
CALIFORNIA, 90026**

CONTACT:

Christopher J. Giordano

Director

License #01928706

213.534.3280

cgjordano@charlesdunn.com

John C. Anthony

Senior Managing Director

License #01226464

213.534.3245

janthony@charlesdunn.com

Chris Steck

Managing Director

License #01841338

213.534.3216

csteck@charlesdunn.com

www.charlesdunn.com



Charles Dunn

PROPERTY OVERVIEW

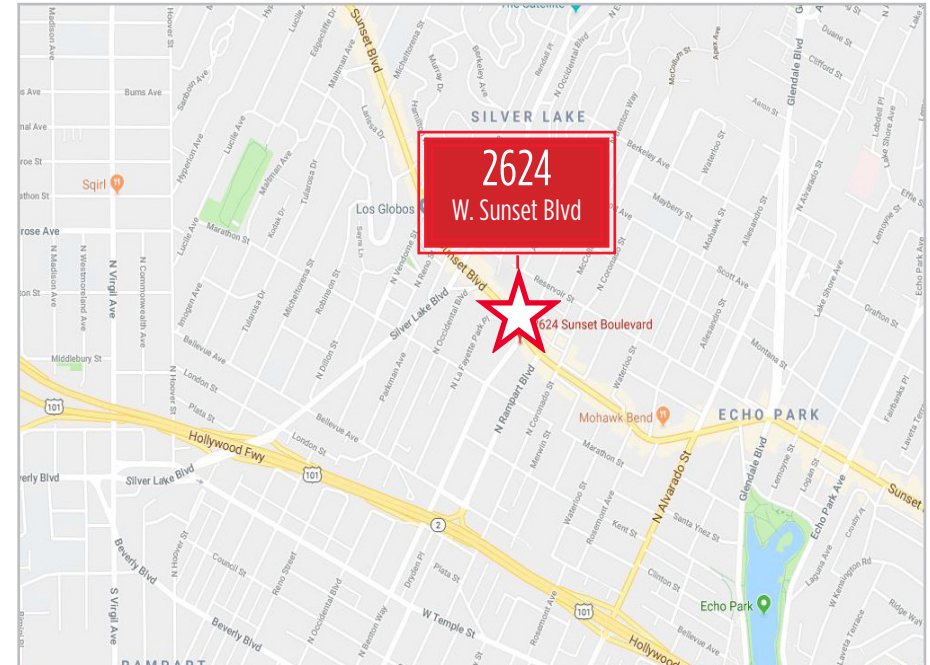
2624 WEST SUNSET BOULEVARD LOS ANGELES, CA 90026

PROPERTY FACTS

- › **Asking Rate: \$3.50 NNN**
- › Retail, creative office and/or production space
- › Approximately 35,700 SF single story building
- › High bow truss exposed ceilings with slab floors
- › Newly renovated throughout

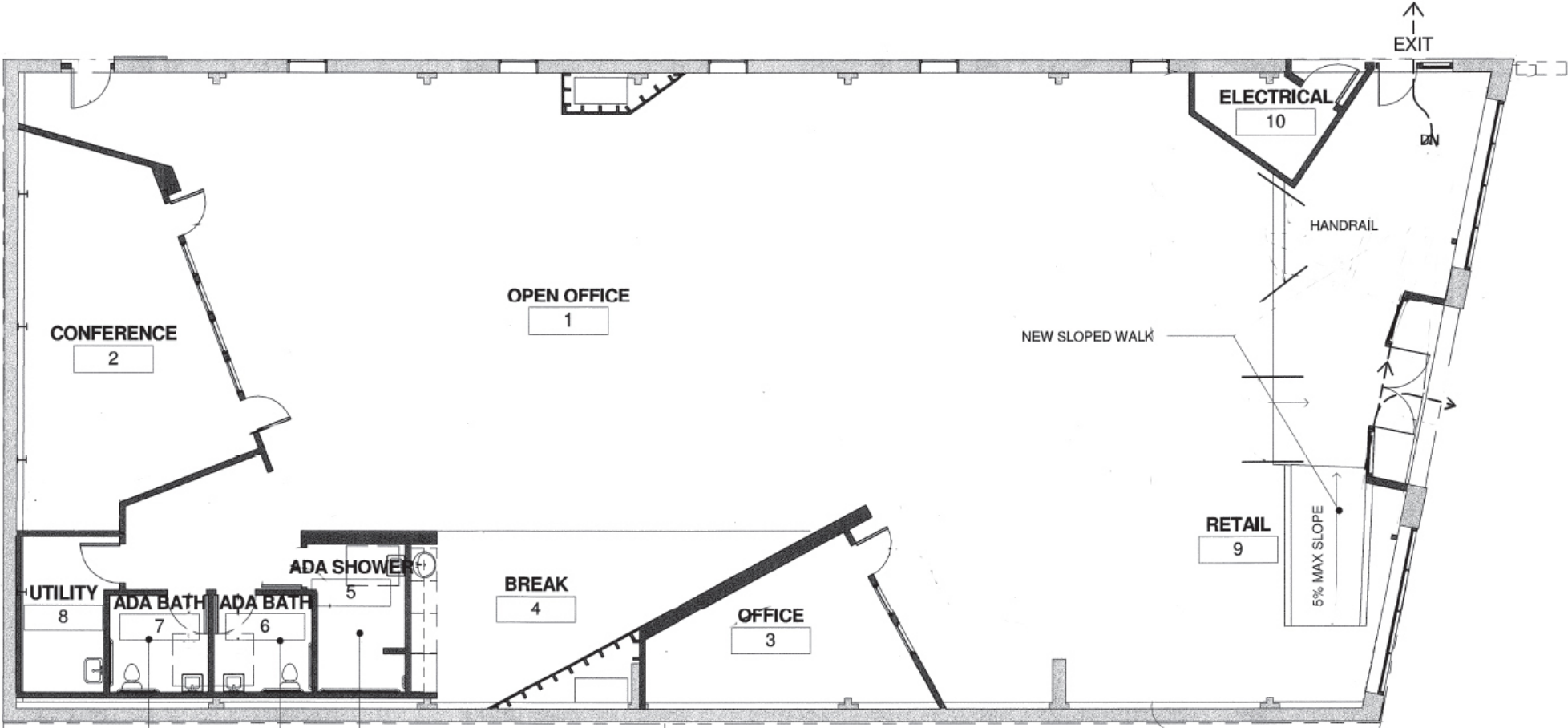
PROPERTY HIGHLIGHTS

- › Excellent opportunity located in the heart of Silverlake and Echo Park
- › Great Sunset Boulevard visibility
- › Well-exposed high traffic location (over 21,000 cars daily pass the unit)
- › Accessible to the 110, 101 and 2 Freeways
- › Adjacent to Downtown Los Angeles & Hollywood
- › Vibrant Neighborhood with multiple walkable amenities



FLOOR PLAN

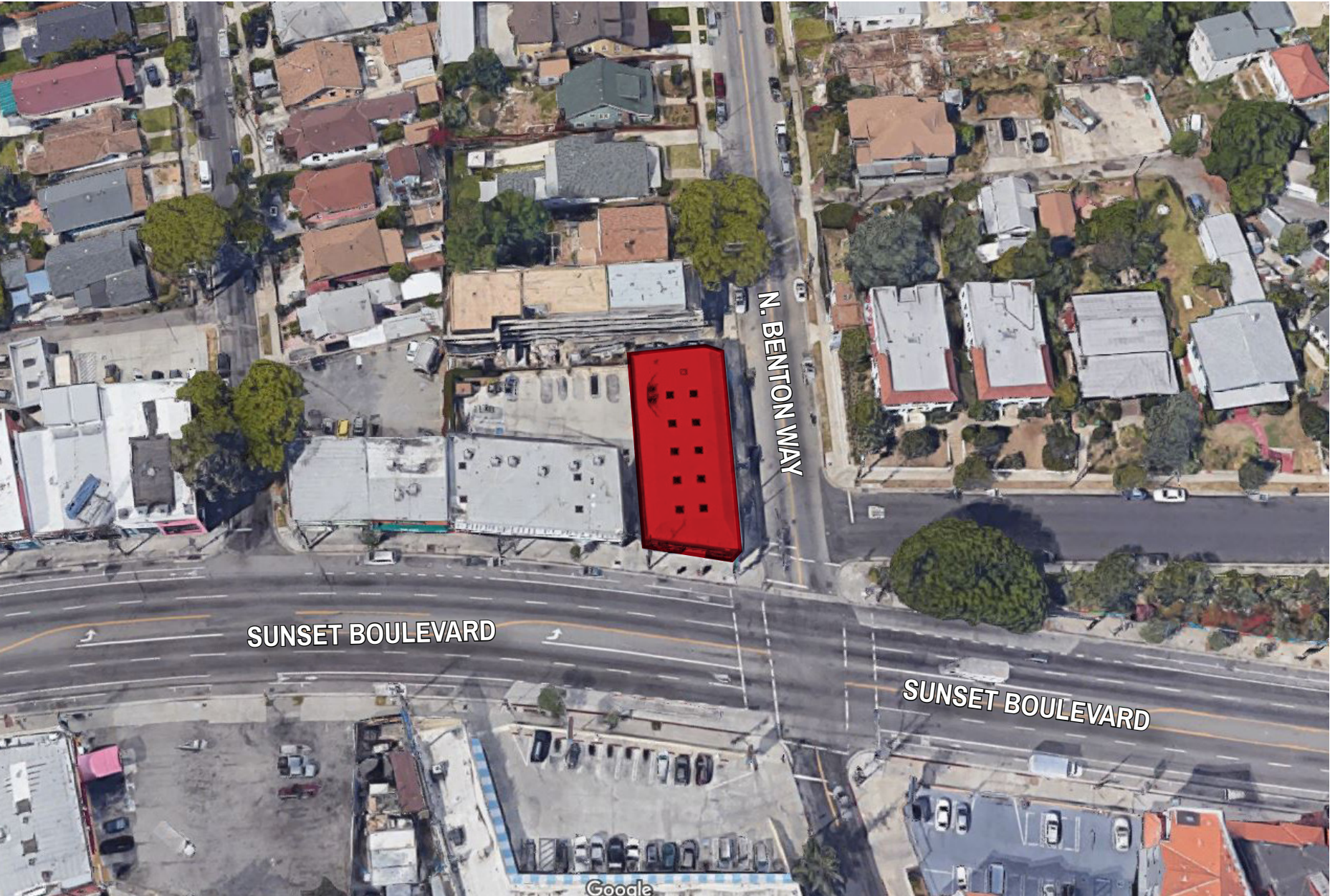
BRENTON WAY



PROPERTY PHOTOS

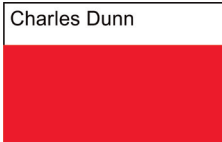


PROPERTY AERIAL



AMENITIES MAP





Charles Dunn Company, Inc.

800 West Sixth Street, Suite 800

Los Angeles, CA 90017

License #01201641

www.charlesdunn.com | 213.481.1800

Christopher Giordano

Director

License #01928706

213.534.3280

cgiordano@charlesdunn.com

John C. Anthony

Senior Managing Director

License #01226464

213.534.3245

janthony@charlesdunn.com

Chris Steck

Managing Director

License #01841338

213.534.3216

csteck@charlesdunn.com

© Charles Dunn Company, Inc. These materials are based on information and content provided by others which we believe are accurate. No guarantee, warranty or representation is made by the Charles Dunn Company or its personnel, and all interested parties must independently verify its accuracy and completeness. As well, any projections, assumptions, opinion, or estimates are used for example only and do not represent the current or future performance of the identified property. Your tax, financial, legal and toxic substance advisors should conduct a careful investigation of the property and its suitability for your needs, including land use limitations.